

By the Numbers: Blaine County

A comparison of Blaine County in five proposed redistricting plans

Montana Districting and Apportionment Commission
Post Office Box 201706
Helena, MT 59620-1706

Phone: 406-444-5367

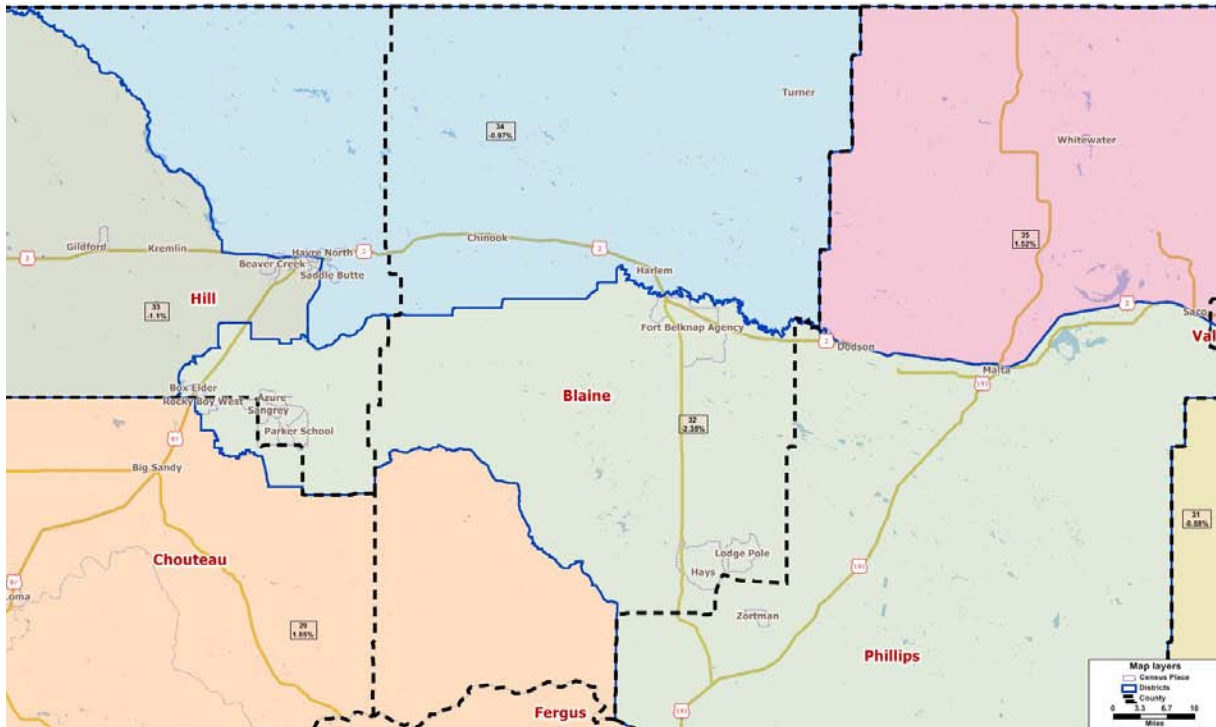
Fax: 406-444-3036

Email: districting@mt.gov

Website: www.leg.mt.gov/districting

Communities Plan

Theme: Integrates Montana communities of interest within multiple criteria



	<u>2010</u>	<u>2000</u>	<u>% Change</u>
County Population	6,491	7,009	-7.4%

Proposed Districts: 3 total

Proposed District Number	Total Population	Deviation*	# of People in District from Blaine County
29	10,077	1.85%	72
32	9,661	-2.35%	2,899
34	9,798	-0.97%	3,520

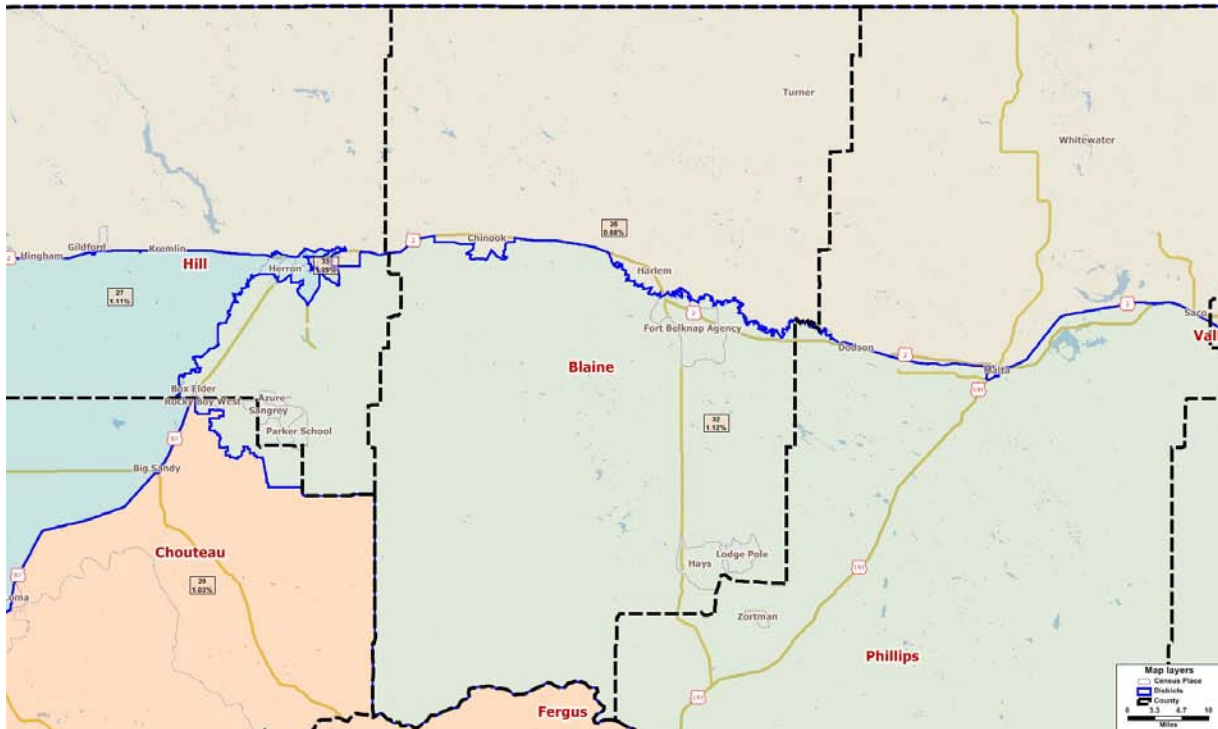
*Ideal house district size after 2010 Census: 9,894 people

Other counties included in proposed house district (# of people)

- 29 – Chouteau (4,546), Fergus (5,459)
- 32 – Chouteau (1,267), Hill (2,372), Phillips (3,123)
- 34 – Hill (6,278)

Deviation Plan

Theme: Emphasize the criterion on relative population equality between the districts



	<u>2010</u>	<u>2000</u>	<u>% Change</u>
County Population	6,491	7,009	-7.4%

Proposed Districts: 2 total

Proposed District Number	Total Population	Deviation*	# of People in District from Blaine County
32	10,005	1.12%	3,328
36	9,961	0.68%	3,163

*Ideal house district size after 2010 Census: 9,894 people

Other counties included in proposed house district (# of people)
 32 – Chouteau (1,263), Hill (2,746), Phillips (1,103), Valley (1,565)
 36 – Hill (1,875), Liberty (159), Phillips (3,150), Valley (1,614)

Existing Plan

Theme: Use the existing legislative district lines as a starting point for new lines



	<u>2010</u>	<u>2000</u>	<u>% Change</u>
County Population	6,491	7,009	-7.4%

Proposed Districts: 2 total

Proposed District Number	Total Population	Deviation*	# of People in District from Blaine County
32	9,992	0.99%	3,673
35	10,078	1.86%	2,818

*Ideal house district size after 2010 Census: 9,894 people

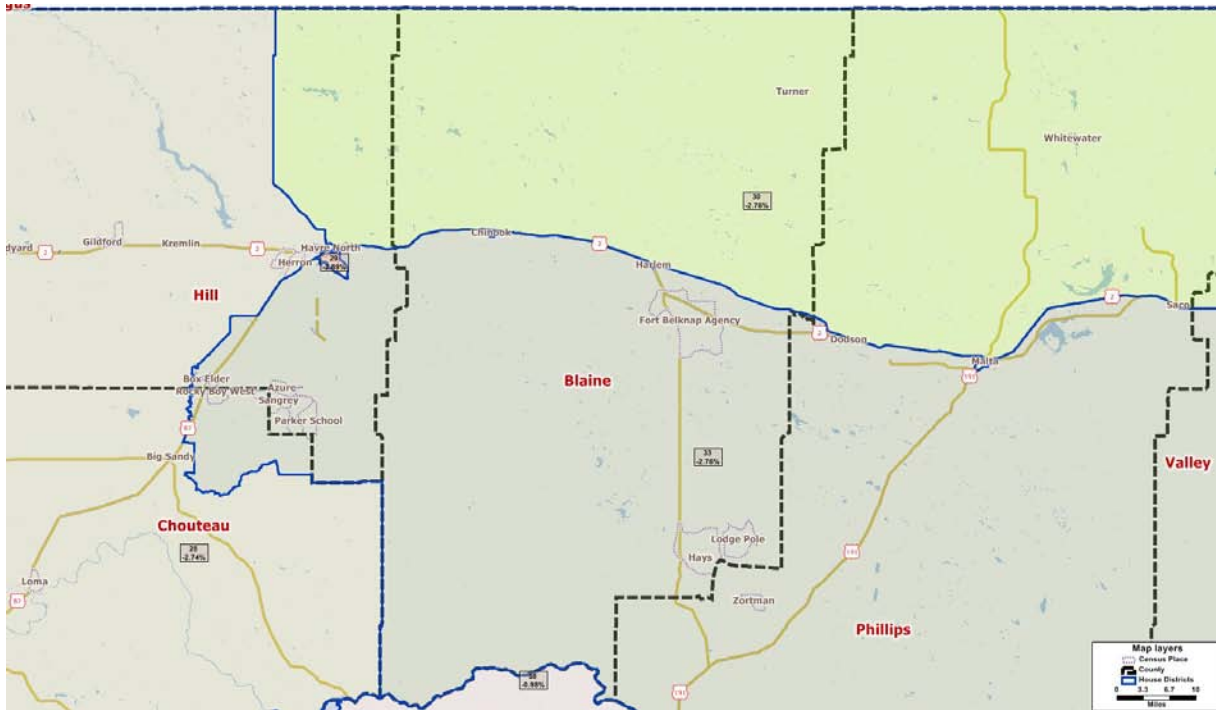
Other counties included in proposed house district (# of people)

32 – Chouteau (1,267), Hill (3,449), Phillips (982), Valley (621)

35 – Hill (1,428), Phillips (3,271), Valley (2,561)

Subdivision Plan

Theme: Attempt to keep political subdivisions intact



	<u>2010</u>	<u>2000</u>	<u>% Change</u>
County Population	6,491	7,009	-7.4%

Proposed Districts: 2 total

Proposed District Number	Total Population	Deviation*	# of People in District from Blaine County
30	9,621	-2.76%	2,790
33	9,621	-2.76%	3,701

*Ideal house district size after 2010 Census: 9,894 people

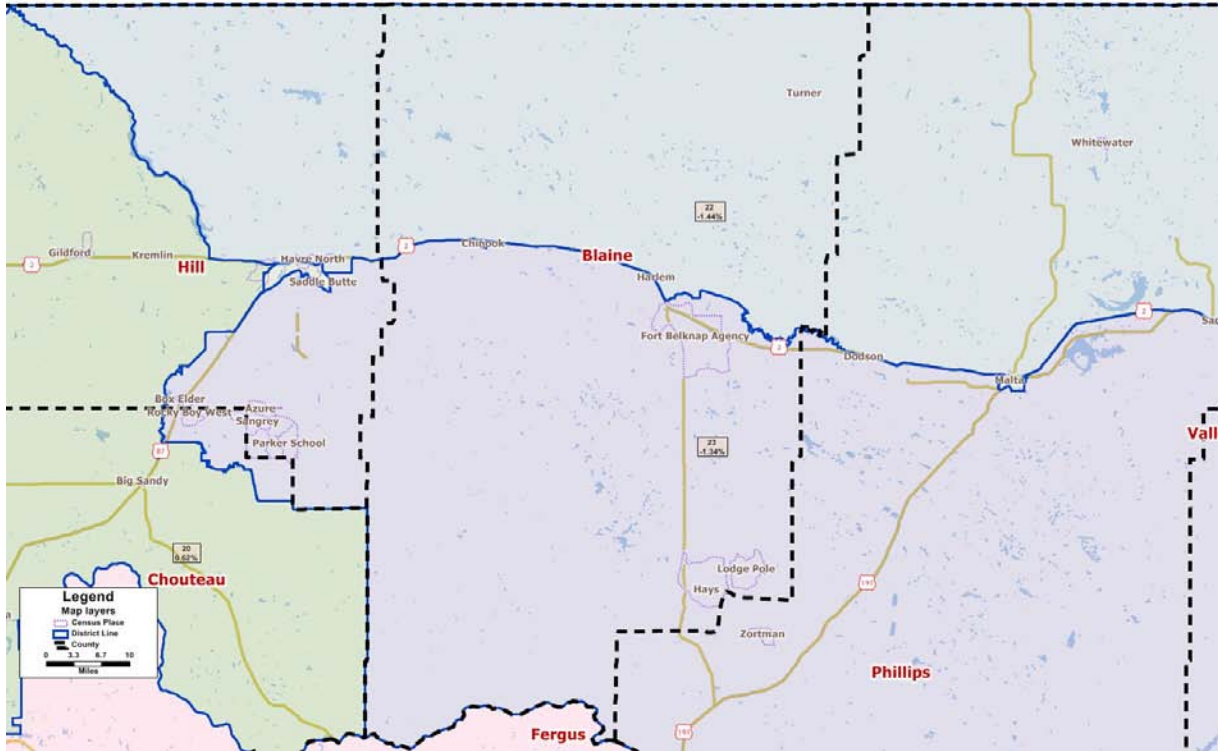
Other counties included in proposed house district (# of people)

30 – Hill (809), Phillips (3,243), Valley (2,779)

33 – Chouteau (1,293), Hill (2,895), Phillips (1,010), Valley (722)

Urban Rural Plan

Theme: Emphasize clear lines between population centers and rural areas



	<u>2010</u>	<u>2000</u>	<u>% Change</u>
County Population	6,491	7,009	-7.4%

Proposed Districts: 2 total

Proposed District Number	Total Population	Deviation*	# of People in District from Blaine County
22	9,752	-1.44%	2,812
23	9,761	-1.34%	3,679

*Ideal house district size after 2010 Census: 9,894 people

Other counties included in proposed house district (# of people)

22 – Hill (1,584), Phillips (3,271), Valley (2,085)

23 – Chouteau (1,275), Hill (2,795), Phillips (982), Valley (1,030)