

By the Numbers: Deer Lodge County

A comparison of Deer Lodge County in five proposed redistricting plans

Montana Districting and Apportionment Commission
Post Office Box 201706
Helena, MT 59620-1706

Phone: 406-444-5367

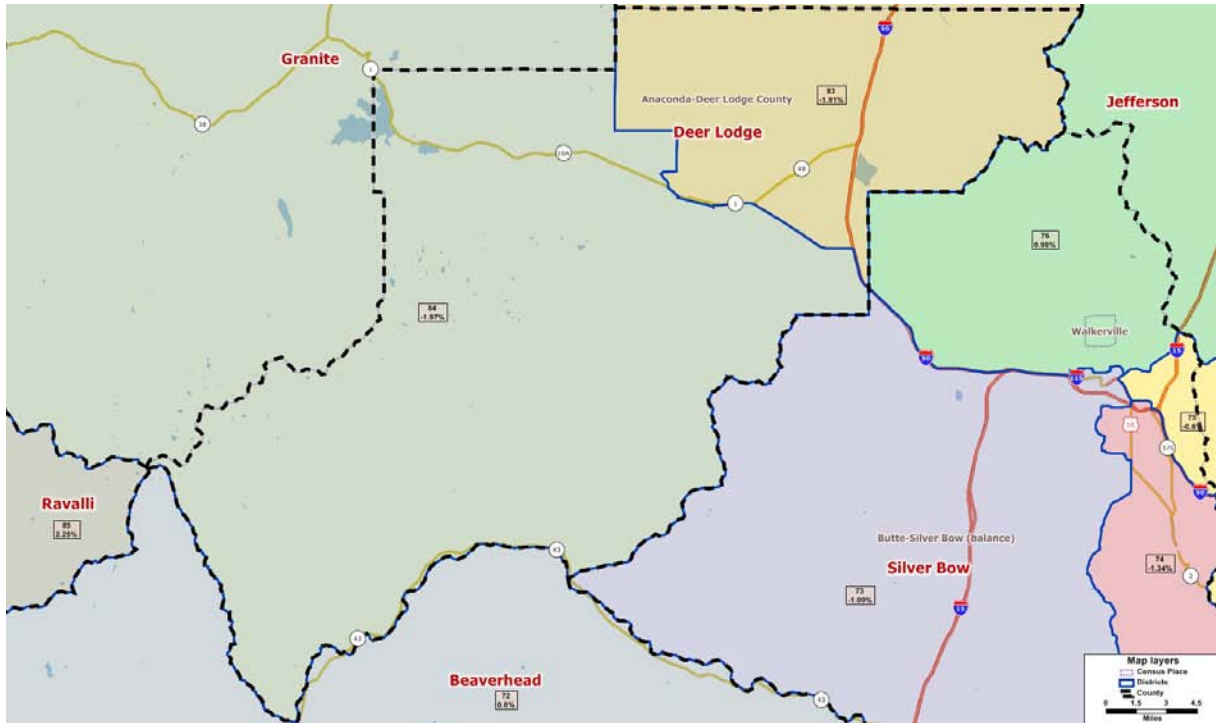
Fax: 406-444-3036

Email: districting@mt.gov

Website: www.leg.mt.gov/districting

Communities Plan

Theme: Integrates Montana communities of interest within multiple criteria



| | <u>2010</u> | <u>2000</u> | <u>% Change</u> |
|-------------------|-------------|-------------|-----------------|
| County Population | 9,298 | 9,417 | -1.3% |

Proposed Districts: 2 total

| Proposed District Number | Total Population | Deviation* | # of People in District from Deer Lodge County |
|--------------------------|------------------|------------|--|
| 83 | 9,705 | -1.91% | 3,718 |
| 84 | 9,699 | -1.97% | 5,580 |

*Ideal house district size after 2010 Census: 9,894 people

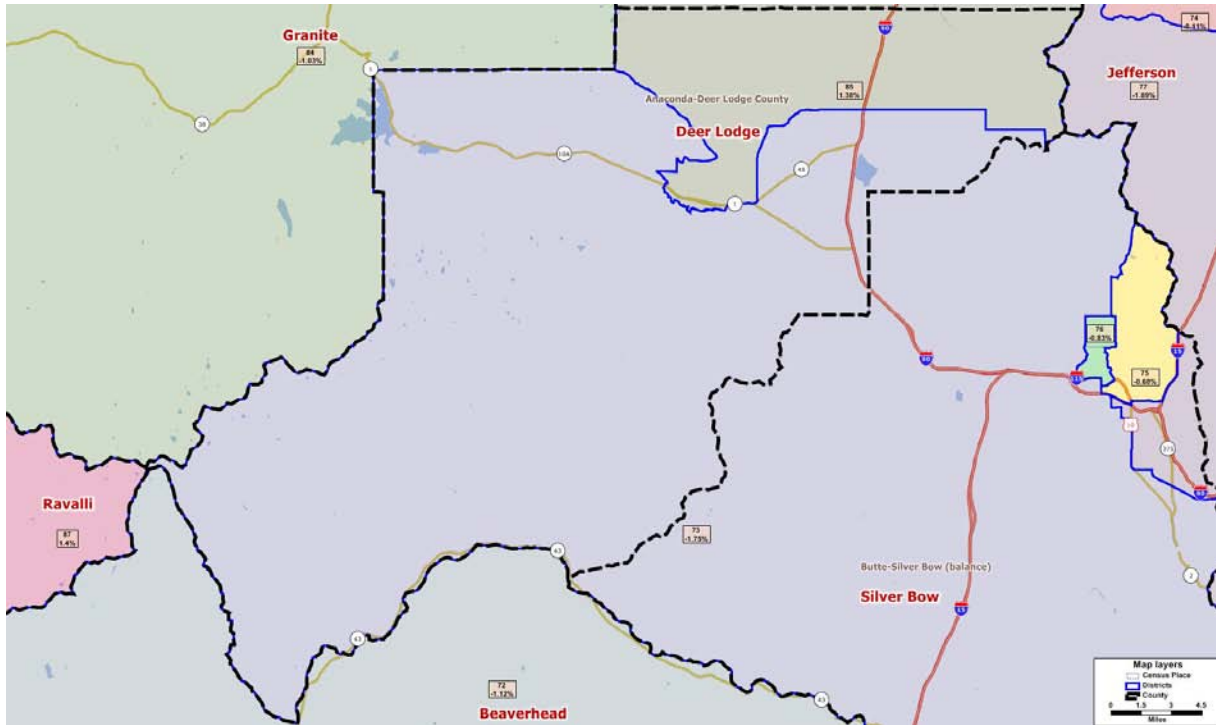
Other counties included in proposed house district (# of people)

83 – Powell (5,987)

84 – Granite (3,079), Powell (1,040)

Deviation Plan

Theme: Emphasize the criterion on relative population equality between the districts



| | <u>2010</u> | <u>2000</u> | <u>% Change</u> |
|-------------------|-------------|-------------|-----------------|
| County Population | 9,298 | 9,417 | -1.3% |

Proposed Districts: 2 total

| Proposed District Number | Total Population | Deviation* | # of People in District from Deer Lodge County |
|--------------------------|------------------|------------|--|
| 73 | 9,721 | -1.75% | 3,135 |
| 85 | 10,031 | 1.38% | 6,163 |

*Ideal house district size after 2010 Census: 9,894 people

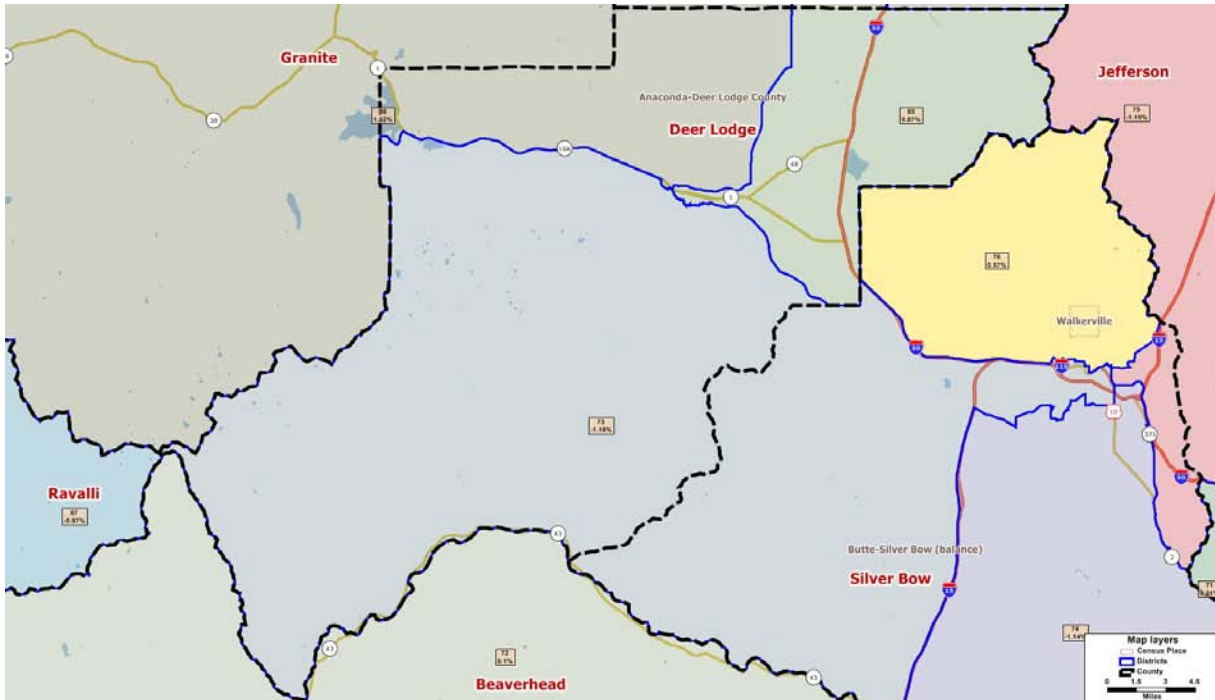
Other counties included in proposed house district (# of people)

73 – Silver Bow (6,586)

85 – Powell (3,868)

Existing Plan

Theme: Use the existing legislative district lines as a starting point for new lines



| | <u>2010</u> | <u>2000</u> | <u>% Change</u> |
|-------------------|-------------|-------------|-----------------|
| County Population | 9,298 | 9,417 | -1.3% |

Proposed Districts: 3 total

| Proposed District Number | Total Population | Deviation* | # of People in District from Deer Lodge County |
|--------------------------|------------------|------------|--|
| 73 | 9,777 | -1.18% | 693 |
| 85 | 9,980 | 0.87% | 6,362 |
| 86 | 10,044 | 1.52% | 2,243 |

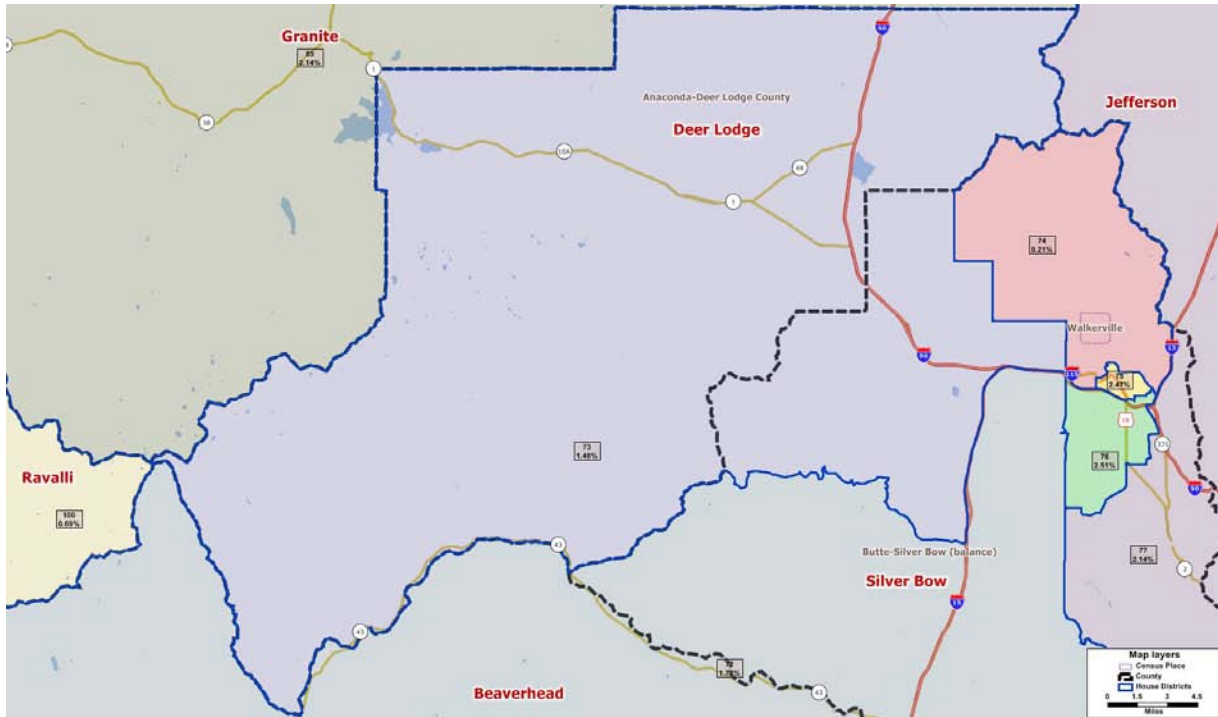
*Ideal house district size after 2010 Census: 9,894 people

Other counties included in proposed house district (# of people)

- 73 – Silver Bow (9,084)
- 85 – Powell (3,618)
- 86 – Granite (3,079), Missoula (1,763), Powell (2,959)

Subdivision Plan

Theme: Attempt to keep political subdivisions intact



| | <u>2010</u> | <u>2000</u> | <u>% Change</u> |
|-------------------|-------------|-------------|-----------------|
| County Population | 9,298 | 9,417 | -1.3% |

Proposed Districts: 1 total

| Proposed District Number | Total Population | Deviation* | # of People in District from Deer Lodge County |
|--------------------------|------------------|------------|--|
| 73 | 10,040 | 1.48% | 9,298 |

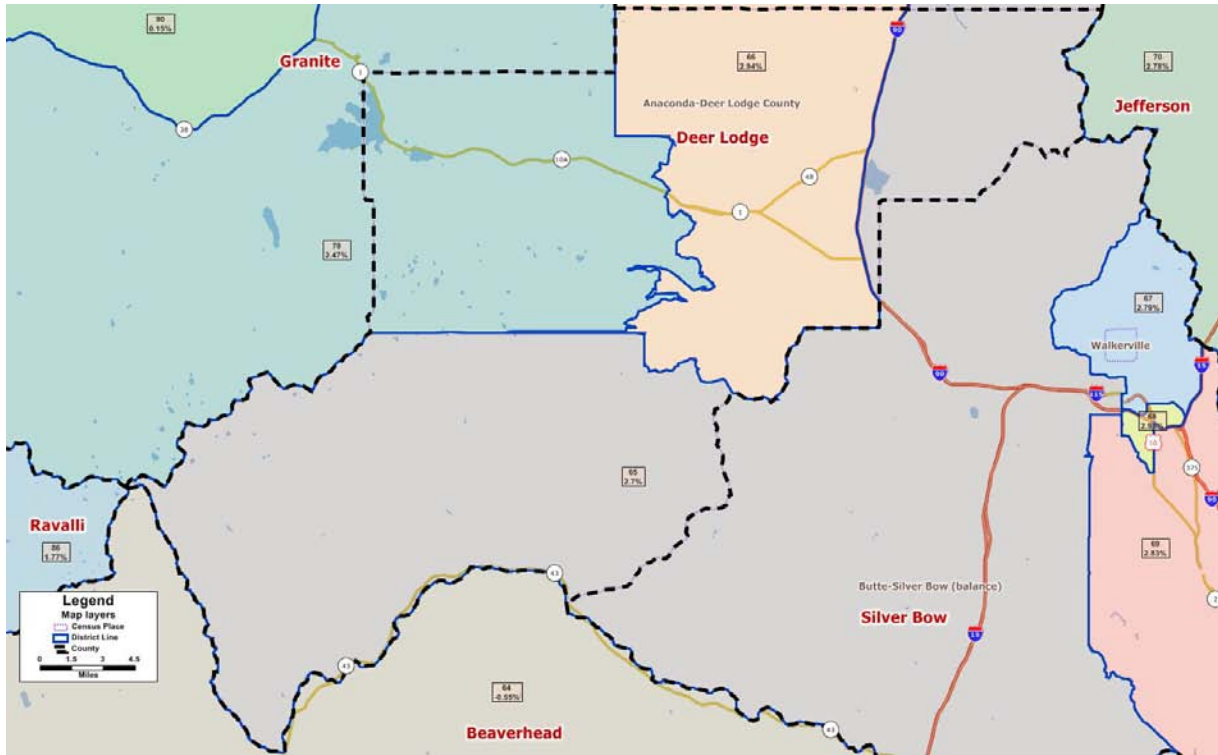
*Ideal house district size after 2010 Census: 9,894 people

Other counties included in proposed house district (# of people)

73 – Silver Bow (742)

Urban Rural Plan

Theme: Emphasize clear lines between population centers and rural areas



| | <u>2010</u> | <u>2000</u> | <u>% Change</u> |
|-------------------|-------------|-------------|-----------------|
| County Population | 9,298 | 9,417 | -1.3% |

Proposed Districts: 3 total

| Proposed District Number | Total Population | Deviation* | # of People in District from Deer Lodge County |
|--------------------------|------------------|------------|--|
| 65 | 10,161 | 2.70% | 136 |
| 66 | 10,185 | 2.94% | 7,630 |
| 78 | 10,138 | 2.47% | 1,532 |

*Ideal house district size after 2010 Census: 9,894 people

Other counties included in proposed house district (# of people)

65 – Powell (3,043), Silver Bow (6,982)

66 – Powell (2,555)

78 – Granite (2,034), Lewis and Clark (2,326), Missoula (2,817), Powell (1,429)