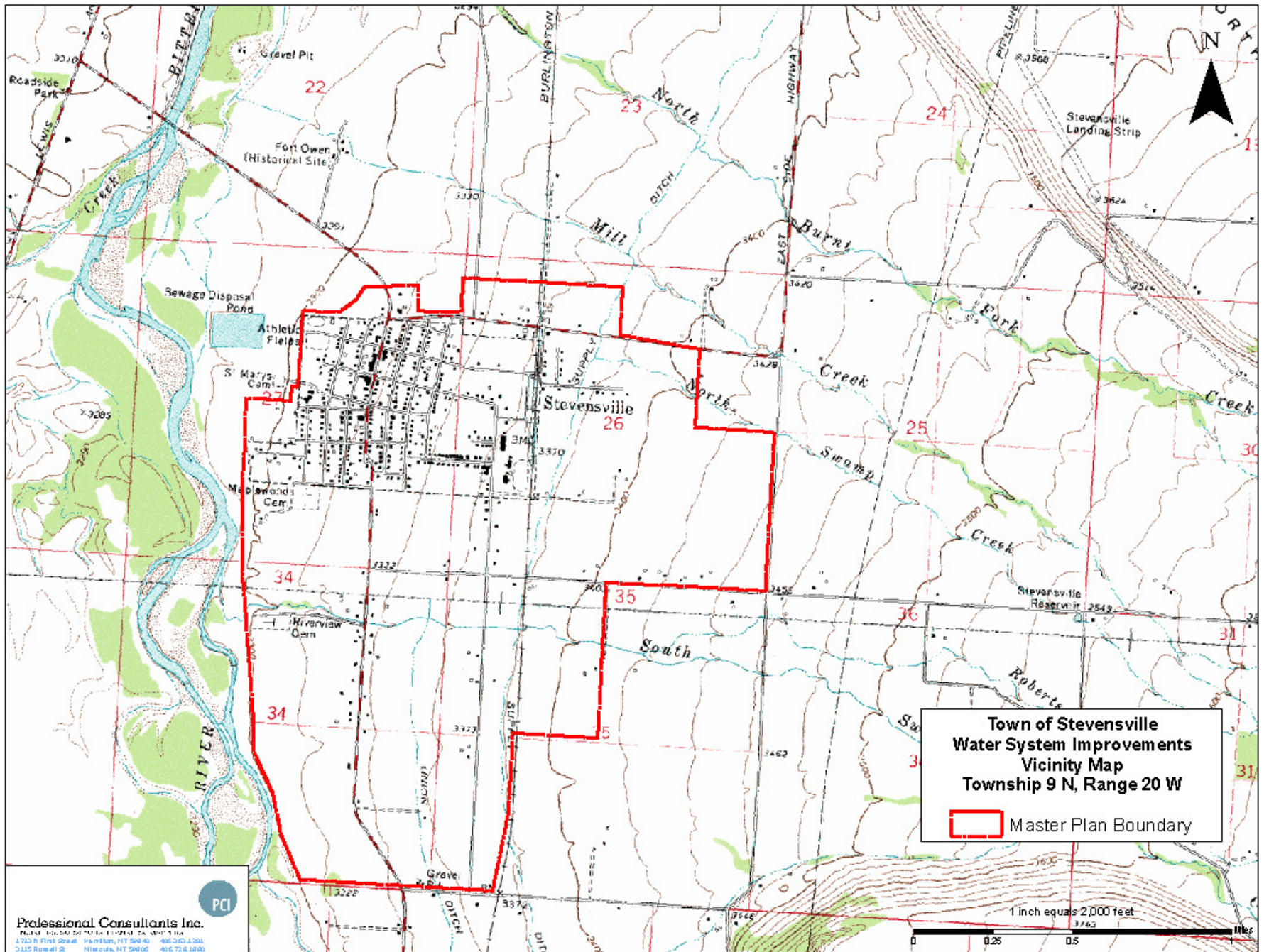


Twin Creeks Subdivision
Town of Stevensville
Ravalli County, Montana

Donny Ramer, EIT






Professional Consultants Inc.
Unmatched Experience. Uncompromising Standards.



**Town of Stevensville
Water System Improvements
Vicinity Map
Township 9 N, Range 20 W**

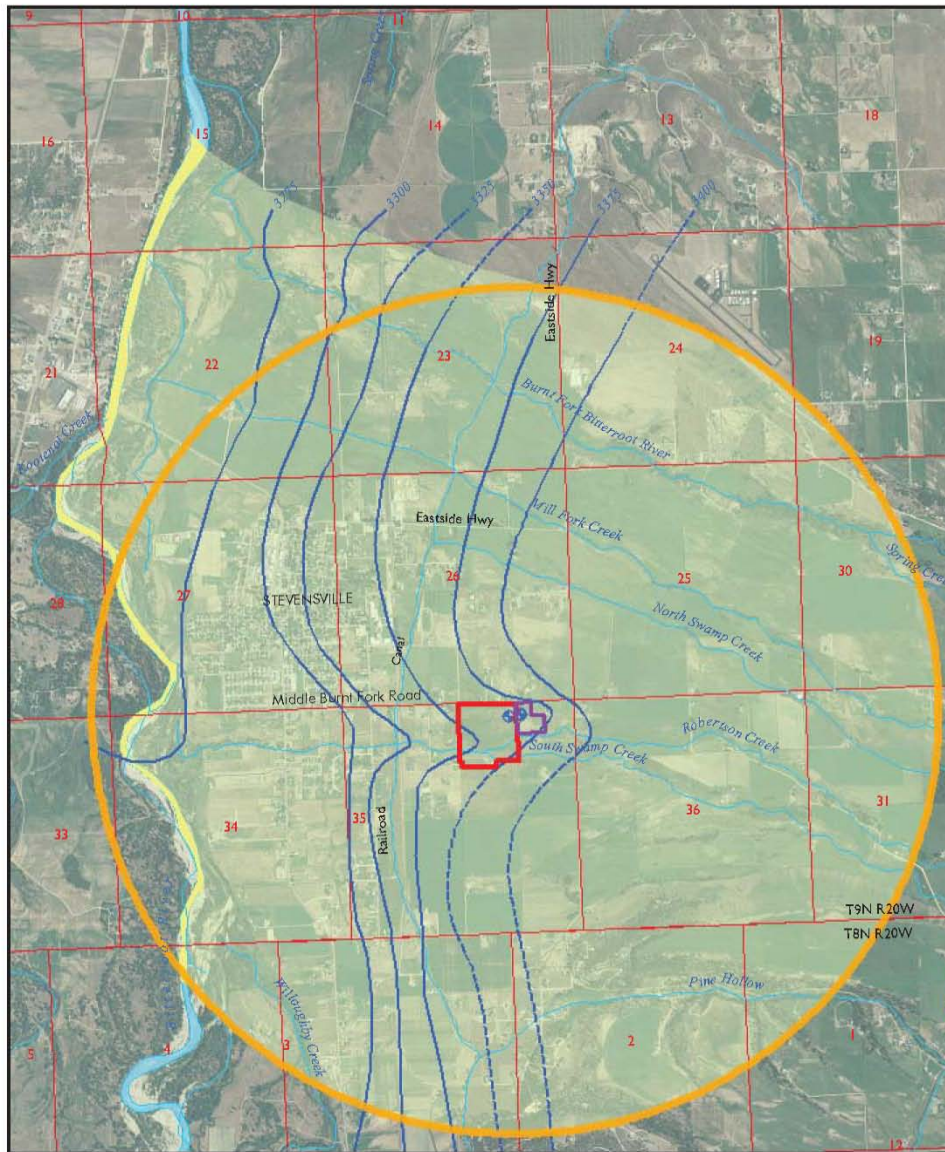
Master Plan Boundary

Town of Stevensville Water System Improvements Vicinity Map

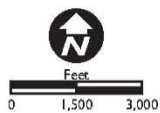
-  Town of Stevensville Municipal Boundary
-  Proposed Well Field
-  Roads




Professional Consultants Inc.
PLANNERS SURVEYORS ENGINEERS ARCHITECTS
1213 W First Street | Hamilton, MT 59840 | 406.363.1201
3115 Russell St | Missoula, MT 59806 | 406.728.1880



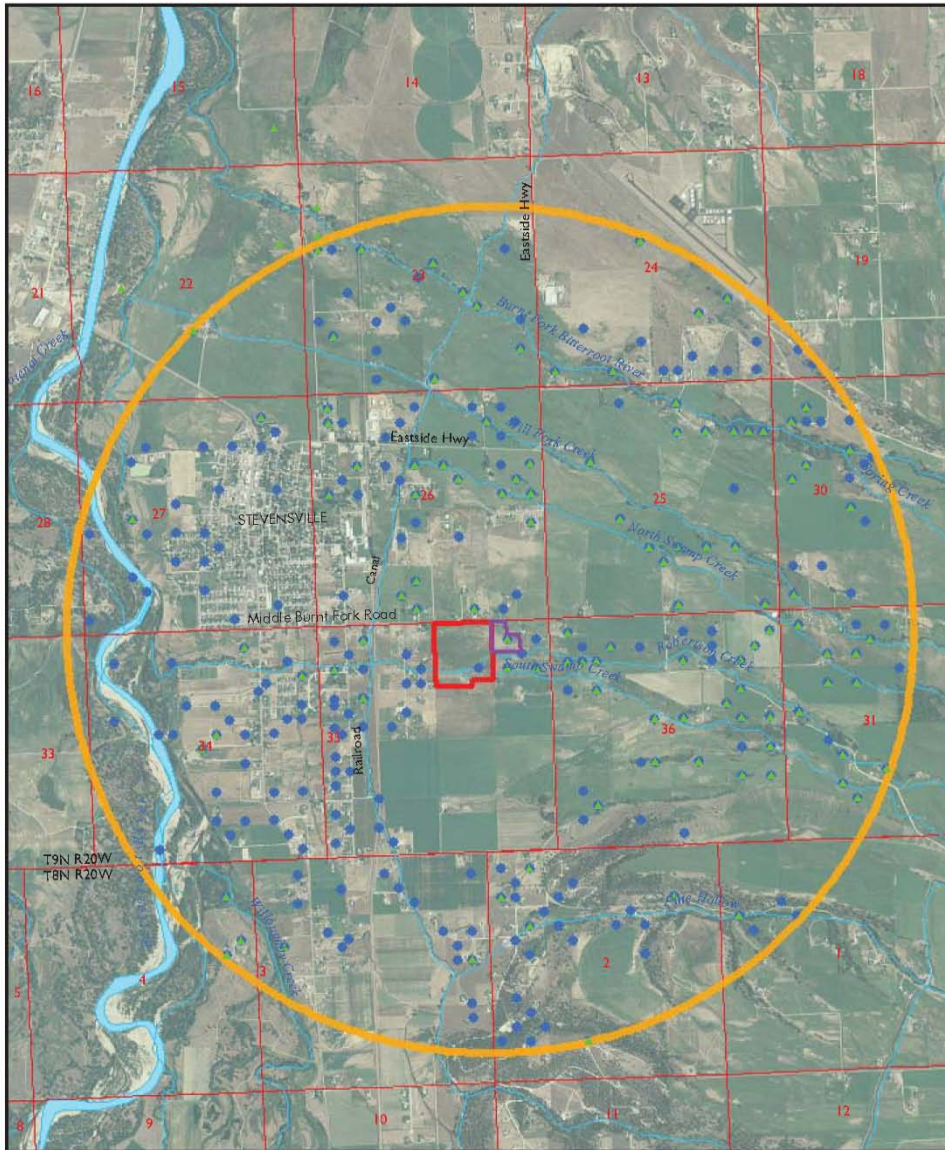
Source: NAIP 2005, Ravalli County



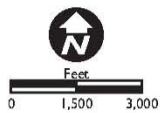
AMEC Geomatrix

- Groundwater Elevation Contours (feet above mean sea level)
- After McMurtrey et al., 1972
- Contours dashed where inferred
- Potentially Affected River Reach
- Estimated Area of Pre-Stream Capture
- PWS Well
- Zone of Influence
- Twin Creeks Subdivision
- Approximate Well Field Boundary

Zone of Influence,
Potentiometric Contours
and Depletion Reach
Town of Stevensville
Stevensville, Montana
FIGURE 4



Source: NAIP 2005, Ravalli County



AMEC Geomatrix

- ▲ Surface Water Point of Diversion
- Groundwater Point of Diversion
- Zone of Influence
- Twin Creeks Subdivision
- Approximate Well Field Boundary

Zone of Influence and
Points of Diversion
Town of Stevensville
Stevensville, Montana
APPENDIX G