



- Alternatives, Inc.
- Boyd Andrew
- CCCS
- Great Falls Transition Center
- Missoula Correctional Facility

# Montana Community Corrections Association

# Alternatives, Inc. (Billings)



- Alpha House Men's Pre-release Center
- Passages Women's Pre-release Center
- Passages Women's Assessment/Sanction/Revocation Center
  - Passages Alcohol & Drug Treatment

# Alpha House Men's Pre-release Center



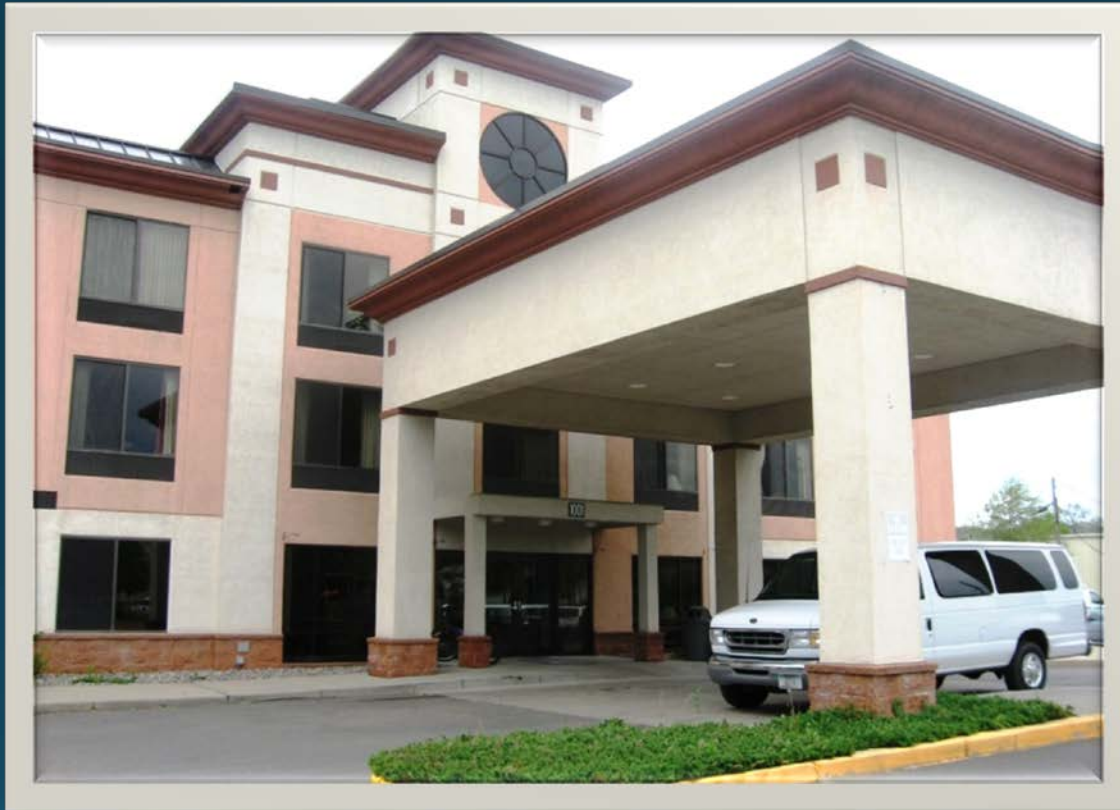
# Assessments Used:

- MORRA (Montana Offender Reentry Risk Assessment): Measures criminal history, education, employment and social support, substance abuse and mental health, criminal lifestyle, and reading level.
- CD testing (includes NEEDS survey and bio-psych social evaluation)
- Violence & Dangerousness Assessment (includes Staxxi and SAQ)
- Gambling Assessment
- South Oaks Gambling Screen
- Barkley Deficits Executive Function Scale (BDEFS): ADHD screening
- DQ (Defendant Questionnaire): Measures truthfulness, alcohol use, drug use, anti social behavior, violence tendencies, and stress management
- Shipley-2 IQ testing: Measures cognitive ability, reading skill level, and abstract abilities.

# Passages Women's Pre-release Center



# Passages Women's Assessment/Sanction/Revocation Center



# Passages Women's Alcohol & Drug Treatment



# Assessments Used:

- WRNA: Women's Risk & Needs Assessment
- CD Testing to include Needs, MAST & DAST. "Needs" includes questions such as employment and relationship issues
- Beck Depression Inventory
- South Oaks Gambling Screen
- 4oL Quick Screen Reading Grade Level
- URICA: assesses motivation for change. Administered upon entry, then again at exit from program (Treatment Readiness)
- Culture Fair Intelligence Test: measures cognitive abilities without a cultural or environmental influence
- Mental Health Evaluation
- Psychiatric Evaluation (if warranted)
- Millon Clinical Multiaxial Inventory: evaluates mental health concerns and helps determine how to manage offenders during the incarceration period.



# Great Falls Transition Center



Male Center

# Assessments Used:

- CD intake assessment (CD services contracted through Benefis Hospital)
- SMAST, drinking questionnaire
- Socrates Personal Drug Use Questionnaire
- Socrates Personal Drinking Questionnaire

# Great Falls Transition Center



Female Center

# Great Falls Bootcamp Aftercare Program



# Butte: Community, Counseling, & Correctional Services, Inc.



Male & Female Center



Connections Corrections  
West (male) / East (female)

# Butte: Community, Counseling, & Correctional Services, Inc.



WATCh Warm Springs (male)



WATCh East (Glendive)

# Butte: Community, Counseling, & Correctional Services, Inc.



Gallatin County Re-Entry Program



START



Nexus

# Assessments Used:

- MORRA (Montana Offender Reentry Risk Assessment): Measures criminal history, education, employment and social support, substance abuse and mental health, criminal lifestyle, and reading level.
- WRNA: Women's Risk & Needs Assessment
- LSI-R



# Helena: Boyd Andrew Community Services



Helena Pre-release  
(male & female)

# Helena: Boyd Andrew Community Services

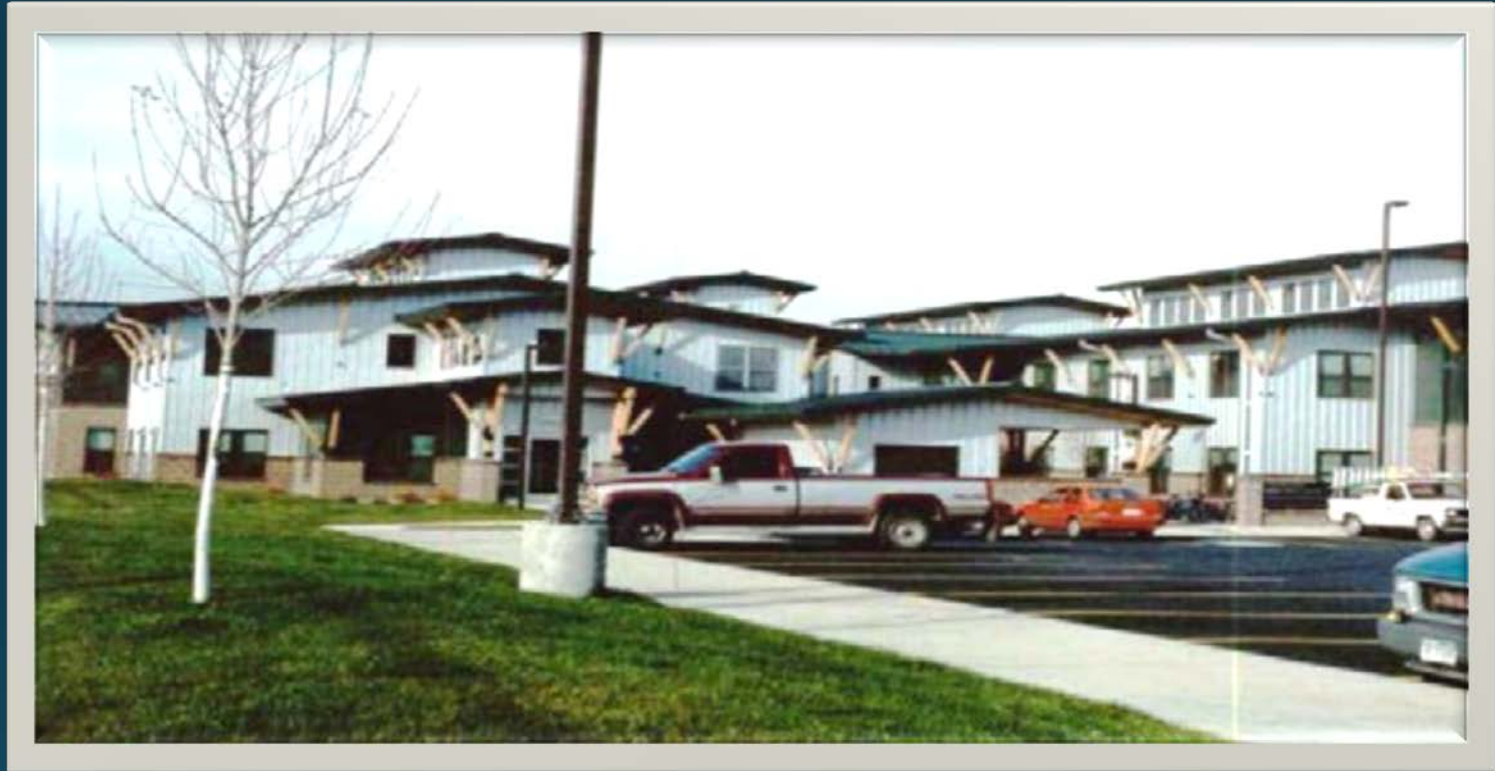


Elkhorn (female)  
Meth treatment

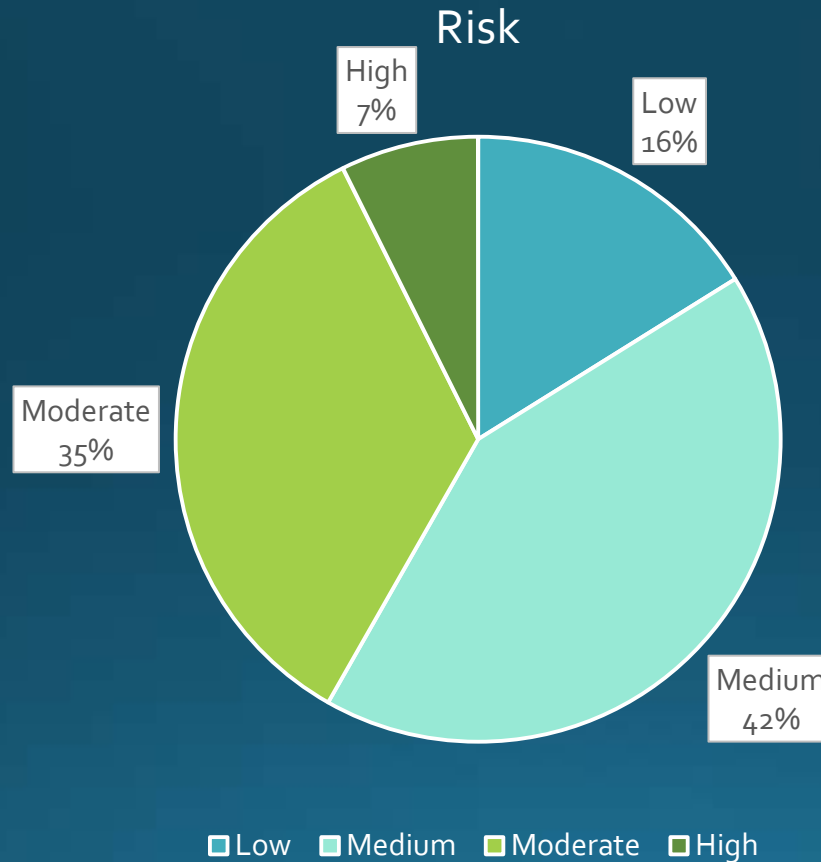
# Assessments Used:

- CD testing (includes the URICA, MAST, DAST, and SASSI)
- Educational/ HiSet Assessment
- MORRA
- Mental Health Evaluations
- Local Gambling Counselors
- Job Service for employment assessments

# Missoula Correctional Services, Inc.

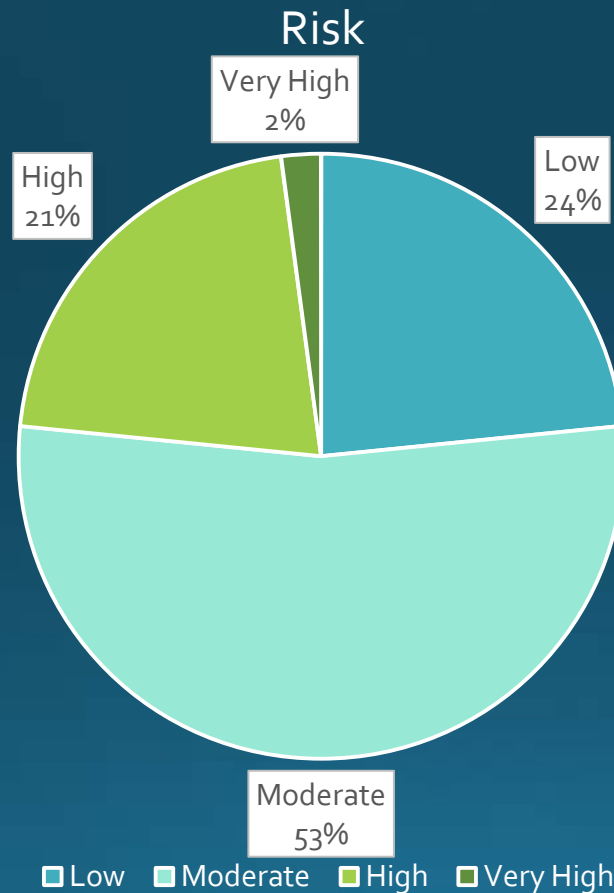


# Passages (Female) WRNA



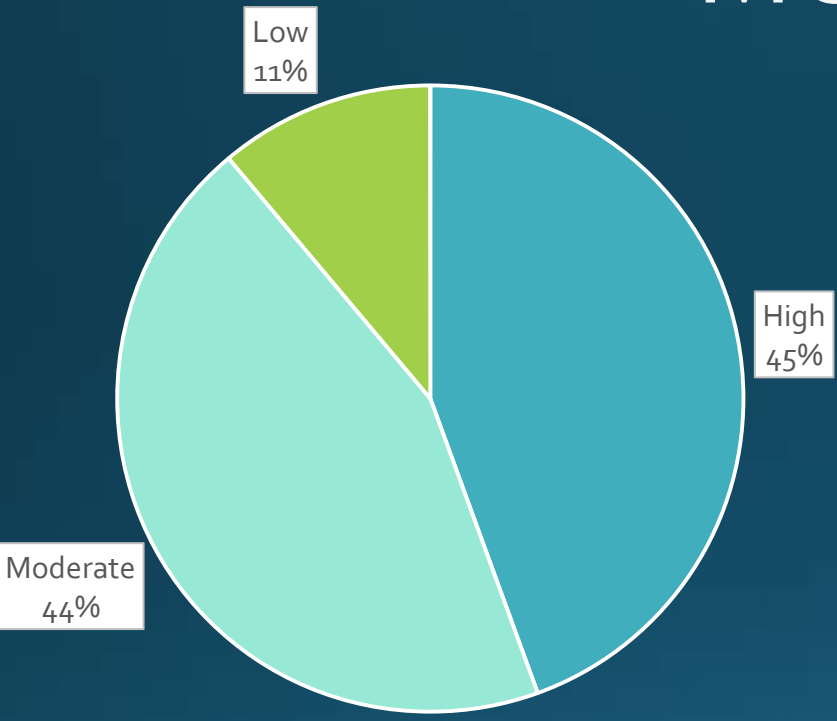
9/1/14 to 9/1/15

# Alpha House (Male) MORRA



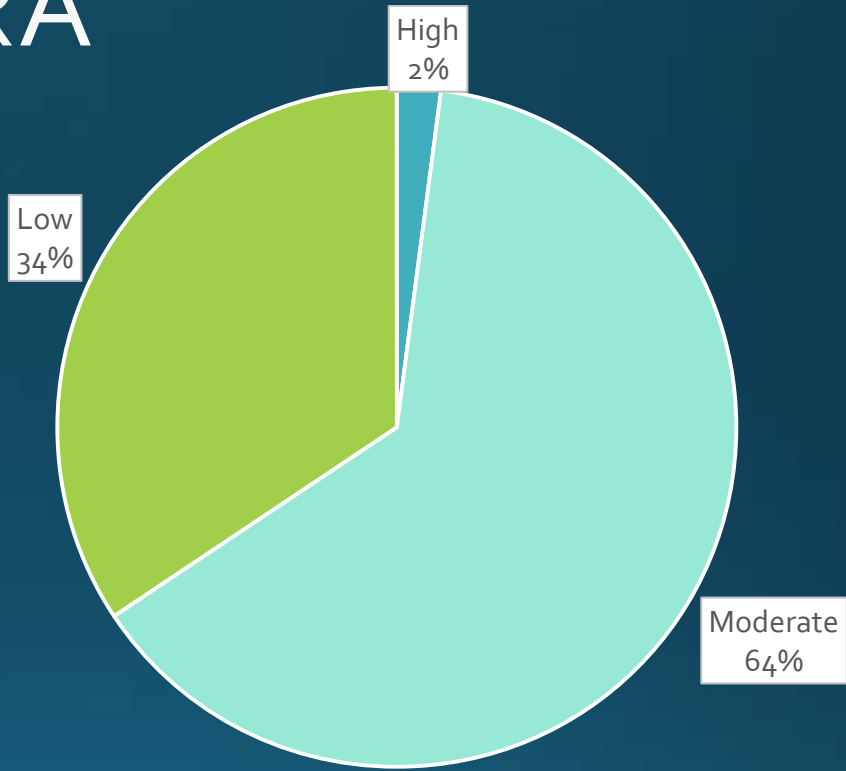
5/1/15 – 9/1/15

# Helena (Male) MORRA



High Moderate Low

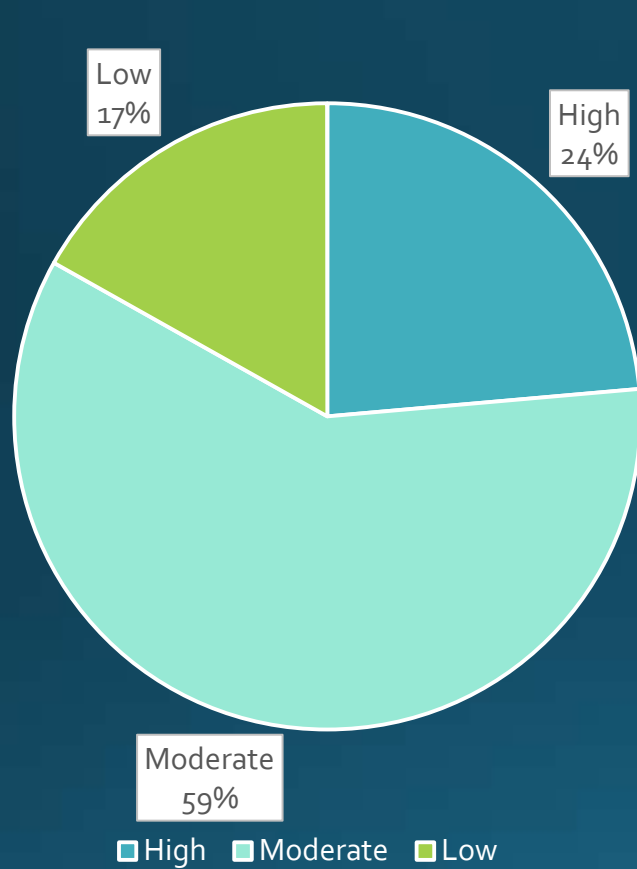
Prior to PRC



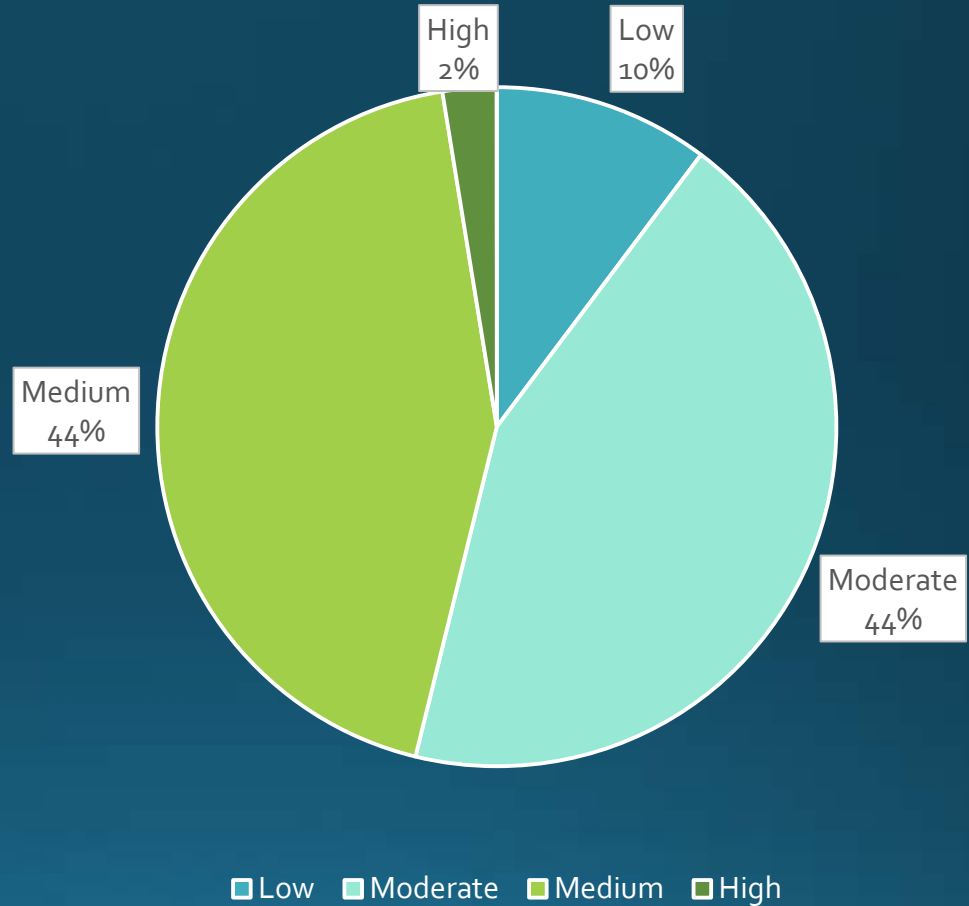
High Moderate Low

After 4-5 Months at PRC

# Missoula MORRA/WRNA



MORRA  
FY15



WRNA  
FY15