

# RESPONSES TO COVID-19:

AGENCY OVERVIEWS, UPDATES, AND CHANGES IN SERVICE

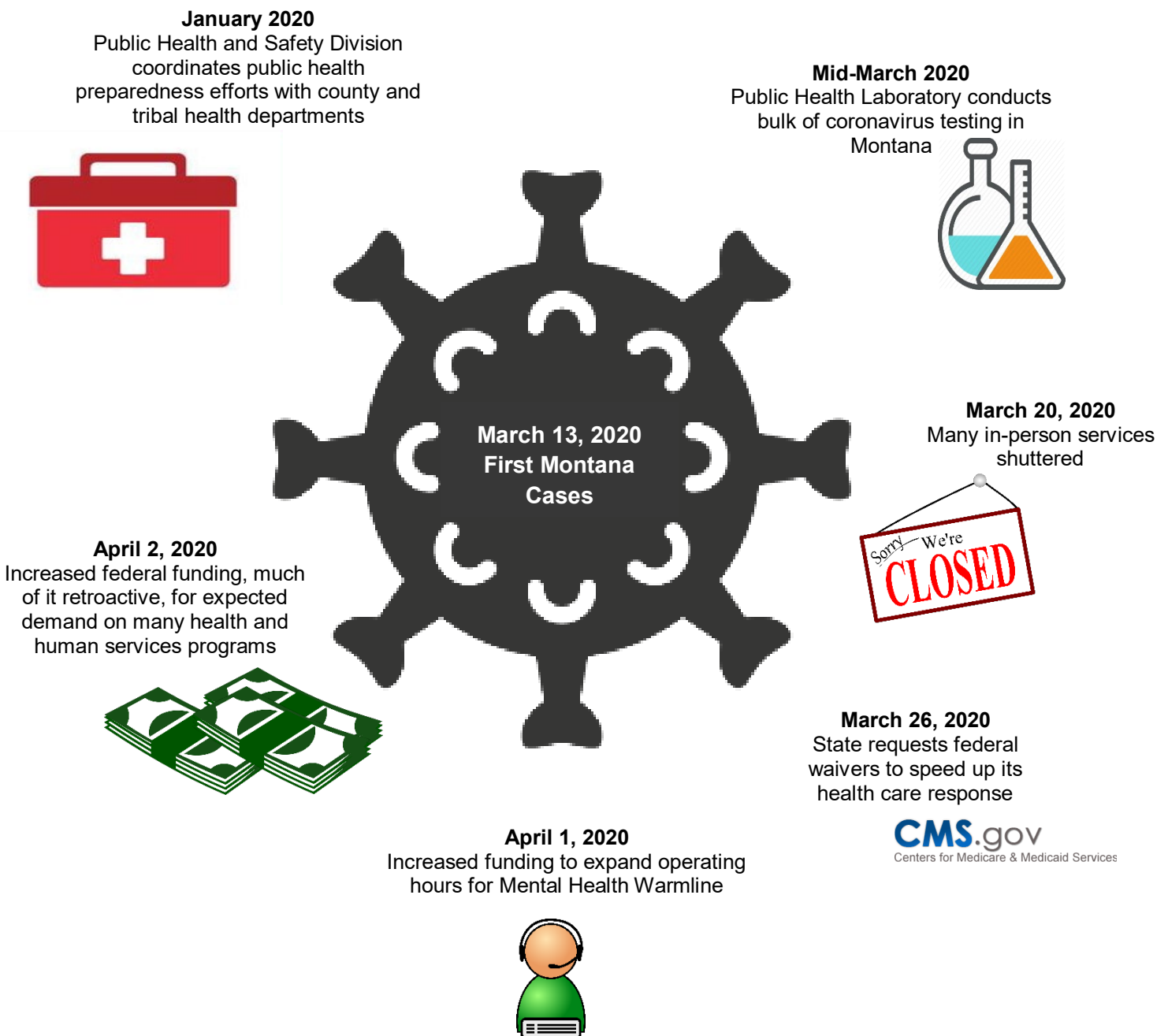
April 2020

Sue O'Connell  
Legislative Research Analyst

## COVID-19: INITIAL IMPACTS ON DPHHS

The novel coronavirus has impacted the Department of Public Health and Human Services (DPHHS) from many different directions. The effects were felt long before the first cases of COVID-19 were confirmed in Montana and are likely to last well after the public health emergency designation is lifted.

The graphic below illustrates some of the many impacts. The table on the back provides more specific details.



Time Period	General Action	Details
January 2020-Present	Public Health Response	<p>The DPHHS Public Health and Safety Division:</p> <ul style="list-style-type: none"> <li>works with Centers for Disease Control and Prevention, county and tribal health departments, and health care providers on coronavirus response</li> <li>serves as the conduit for federal funding from the initial coronavirus federal legislation <ul style="list-style-type: none"> <li>\$2.5 million distributed to counties and tribes, based on population</li> <li>\$2 million to DPHHS for continued preparedness and testing efforts</li> </ul> </li> </ul>
Mid-March-Present	Coronavirus Testing	<p>The DPHHS Public Health Laboratory:</p> <ul style="list-style-type: none"> <li>begins operating 24/7 to process coronavirus tests</li> <li>expands its courier service to pick up test samples from 22 additional sites around the state</li> </ul>
Late March	In-Person Services Reduced	<p>DPHHS <a href="#">stops providing in-person services</a> for:</p> <ul style="list-style-type: none"> <li>determining eligibility for Medicaid, Supplemental Nutrition Assistance Program (SNAP) benefits, and other assistance programs</li> <li>providing child support enforcement services</li> <li>issuing birth and death certificates</li> <li>administering community-based services for people with developmental disabilities</li> </ul> <p>Services are being provided by phone, mail, or electronic alternatives.</p> <p>DPHHS <a href="#">requests and receives Medicaid and CHIP waivers</a> to provide flexibility in several areas of the state's health care response.</p> <p>DPHHS <a href="#">provides guidance</a> to the public and many affected stakeholders.</p>
April 1	Mental Health Support	<p>DPHHS provides funding to <a href="#">extend operating hours of the Montana Warmline</a>, a mental health resource.</p>
April-Dec. 31, 2020, or Duration of Public Health Emergency	Funding/Changes to Public Assistance Programs	<p>Federal legislation boosts funding and removes some requirements for health/human services programs to offset expected impacts of business closures, including:</p> <ul style="list-style-type: none"> <li>a 6.2% increase in federal matching funds for the traditional (non-expansion) Medicaid population; Montana's match would increase to about 71%</li> <li>increased funding for: <ul style="list-style-type: none"> <li>food assistance programs</li> <li>community health centers and hospitals</li> <li>community mental health providers</li> <li>home and community-based services for the elderly and disabled</li> <li>child care providers</li> <li>other social services and emergency assistance programs</li> </ul> </li> <li>suspension of the work requirement for able-bodied SNAP recipients who don't have dependent children</li> </ul>