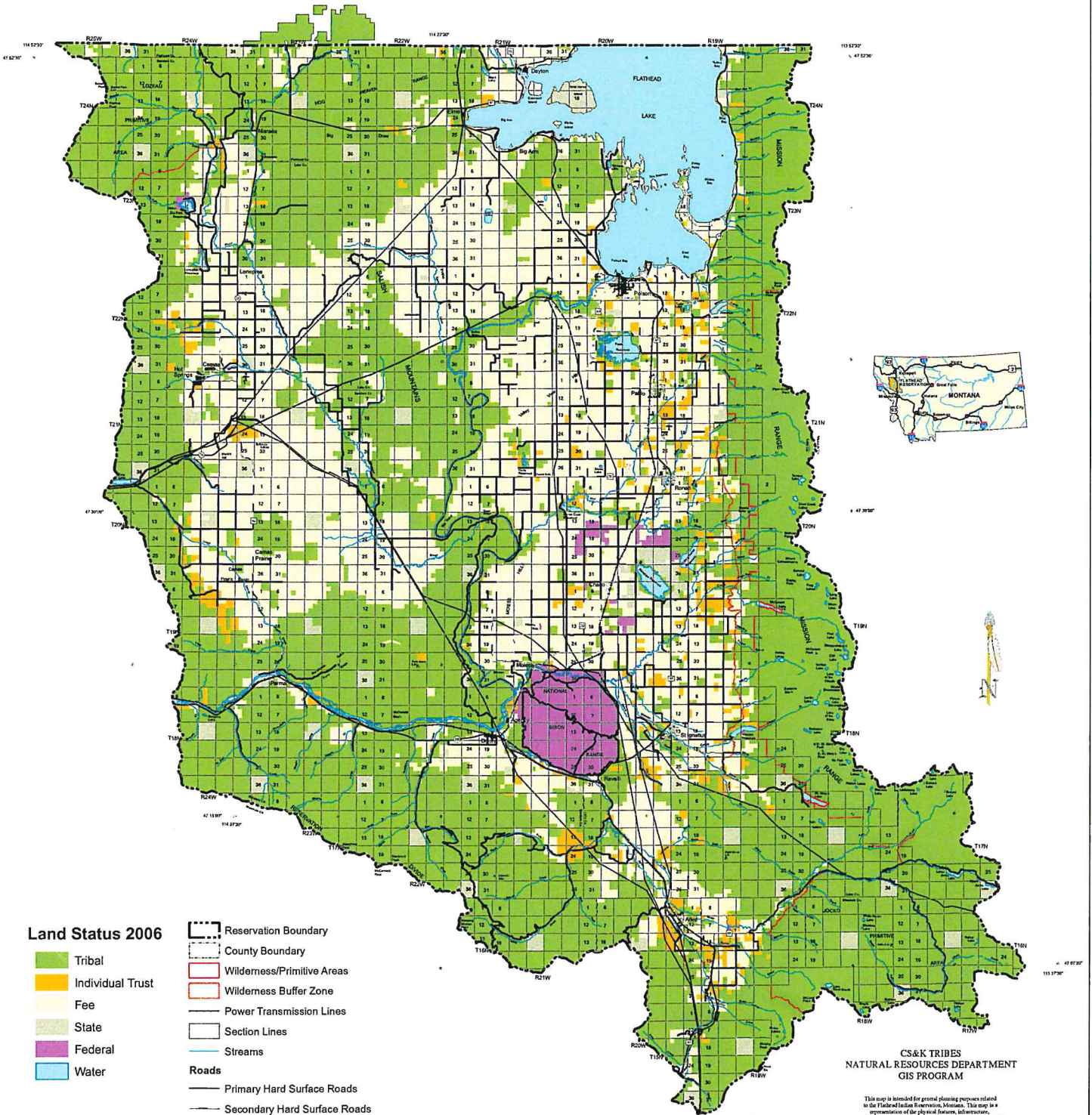
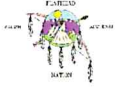


# THE CONFEDERATED SALISH AND KOOTENAI TRIBES OF THE FLATHEAD NATION

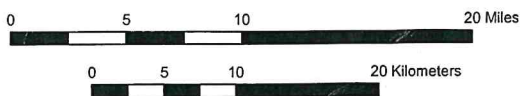


### Land Status 2006

- Tribal
- Individual Trust
- Fee
- State
- Federal
- Water

- Reservation Boundary
- County Boundary
- Wilderness/Primitive Areas
- Wilderness Buffer Zone
- Power Transmission Lines
- Section Lines
- Streams

- #### Roads
- Primary Hard Surface Roads
  - Secondary Hard Surface Roads
  - Light Duty Roads
  - Railroads
  - Airports
  - Land Features
  - Marinas
  - Lookout Towers



### CS&K TRIBES NATURAL RESOURCES DEPARTMENT GIS PROGRAM

This map is intended for general planning purposes related to the Flathead Indian Reservation, Montana. This map is a representation of the physical features, infrastructure, and land ownership boundaries. This map should not be relied upon to establish legal title, boundary lines or locations of improvements.

Much of the land portrayed on this map is tribally owned and is closed or has restricted entry and travel rules. Please observe all tribal, local, and agency regulations/ordinances.

This map was created from records and existing map sources, not from field surveys. Actual land status is maintained by the Confederated Salish & Kootenai Tribes, Title and Records Public Notices.

This map status is current as of February 2006.  
Copyright (c) 1993, 2006 CS&K Tribes Natural Resources Department. All rights reserved.  
Software: ESRI ARCMAP (ARCCSO) Version 9.1  
Hardware: DELL Precision 530  
Printer: Hewlett-Packard DesignJet 1055c