

By the Numbers: Pondera County

A comparison of Pondera County in five proposed redistricting plans

Montana Districting and Apportionment Commission
Post Office Box 201706
Helena, MT 59620-1706

Phone: 406-444-5367

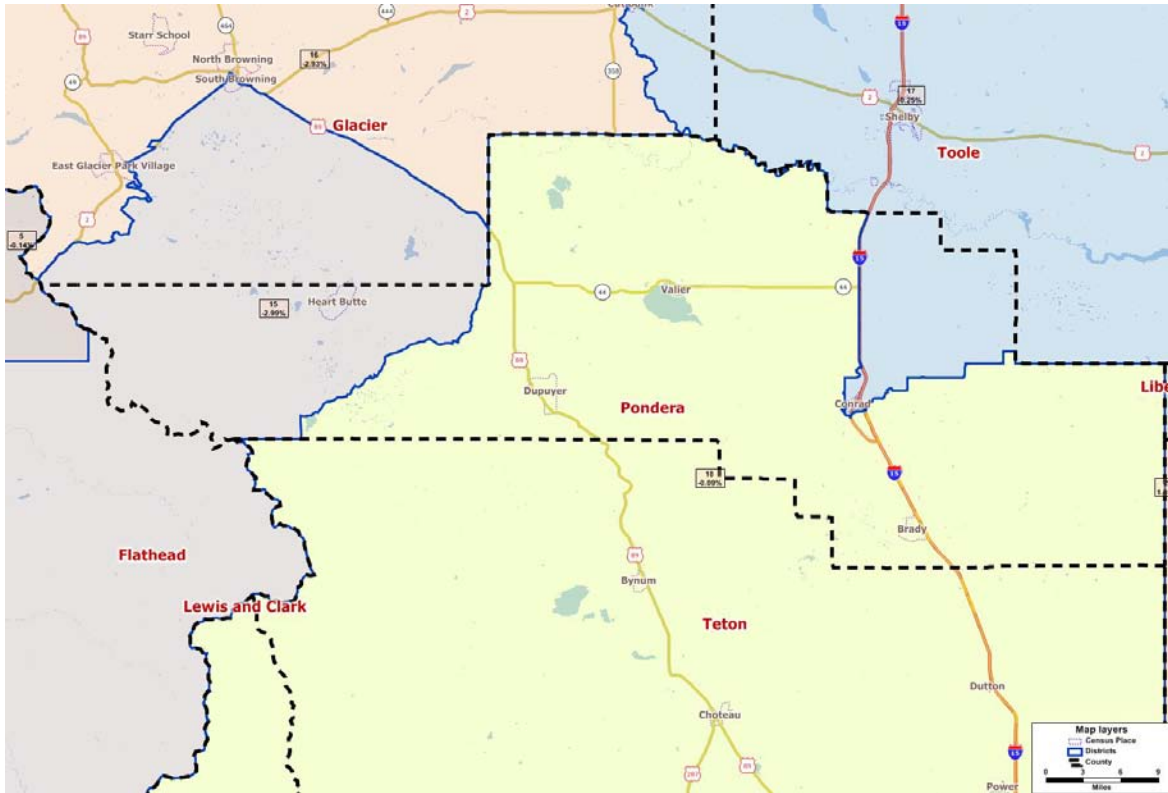
Fax: 406-444-3036

Email: districting@mt.gov

Website: www.leg.mt.gov/districting

Communities Plan

Theme: Integrates Montana communities of interest within multiple criteria



	<u>2010</u>	<u>2000</u>	<u>% Change</u>
County Population	6,153	6,424	-4.2%

Proposed Districts: 3 total

Proposed District Number	Total Population	Deviation*	# of People in District from Pondera County
15	9,598	-2.99%	748
17	9,919	0.25%	2,842
18	9,885	-0.09%	2,563

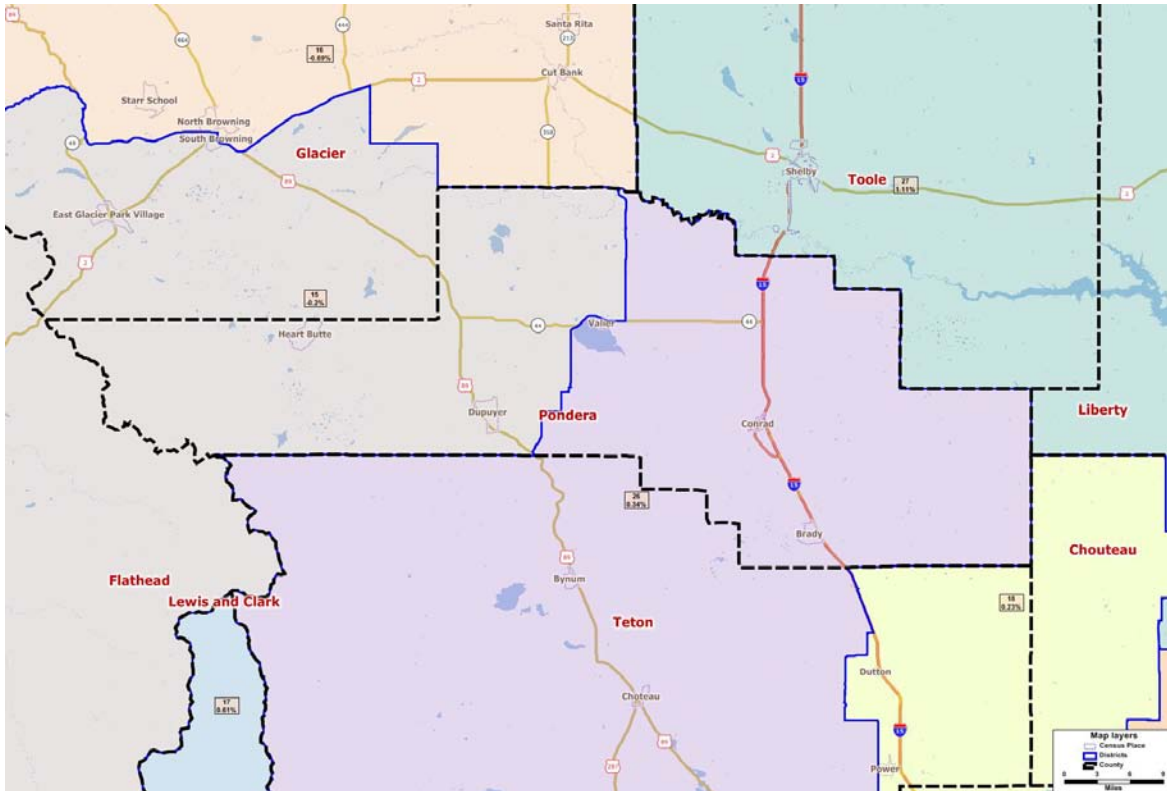
*Ideal house district size after 2010 Census: 9,894 people

Other counties included in proposed house district (# of people)

- 15 – Flathead (5), Glacier (2,042), Lake (6,803)
- 17 – Glacier (1,753), Toole (5,324)
- 18 – Lewis and Clark (1,249), Teton (6,073)

Deviation Plan

Theme: Emphasize the criterion on relative population equality between the districts



	<u>2010</u>	<u>2000</u>	<u>% Change</u>
County Population	6,153	6,424	-4.2%

Proposed Districts: 2 total

Proposed District Number	Total Population	Deviation*	# of People in District from Pondera County
15	9,874	-0.20%	1,490
26	9,928	0.34%	4,663

*Ideal house district size after 2010 Census: 9,894 people

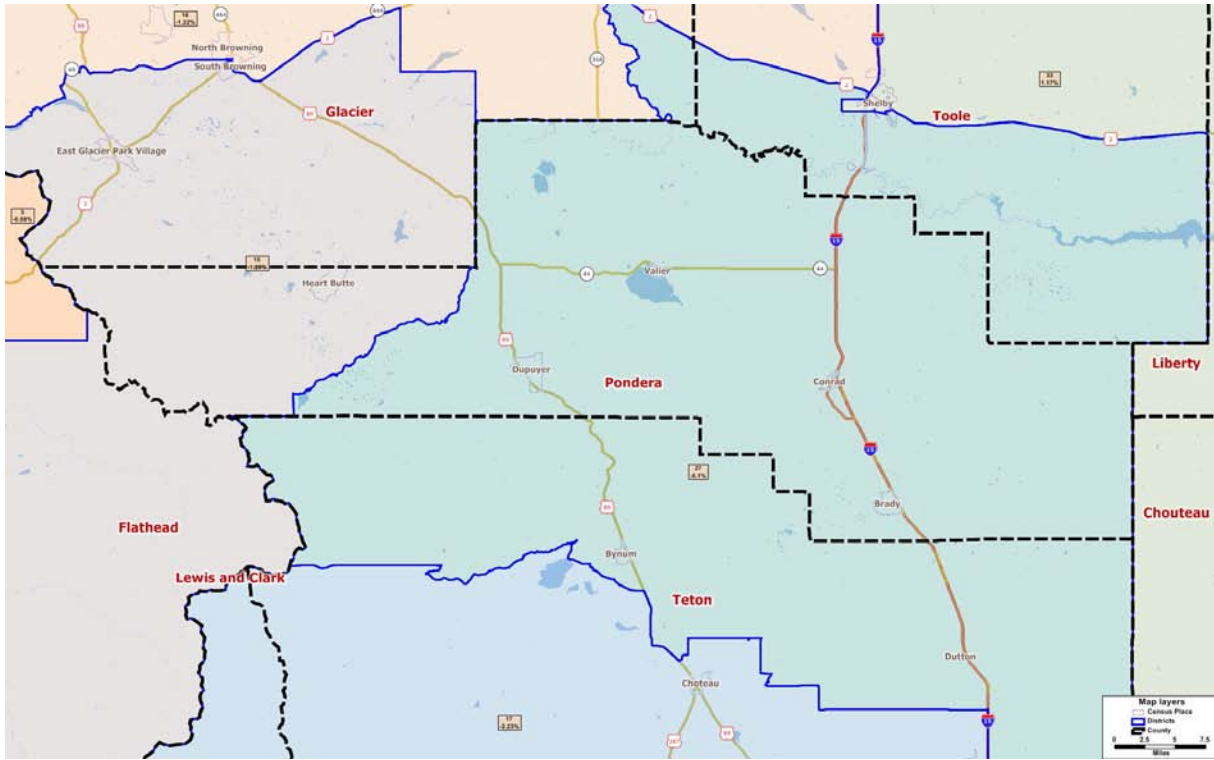
Other counties included in proposed house district (# of people)

15 – Flathead (953), Glacier (3,573), Lake (3,858)

26 – Teton (5,265)

Existing Plan

Theme: Use the existing legislative district lines as a starting point for new lines



	<u>2010</u>	<u>2000</u>	<u>% Change</u>
County Population	6,153	6,424	-4.2%

Proposed Districts: 2 total

Proposed District Number	Total Population	Deviation*	# of People in District from Pondera County
15	9,766	-1.29%	748
27	9,884	-0.10%	5,405

*Ideal house district size after 2010 Census: 9,894 people

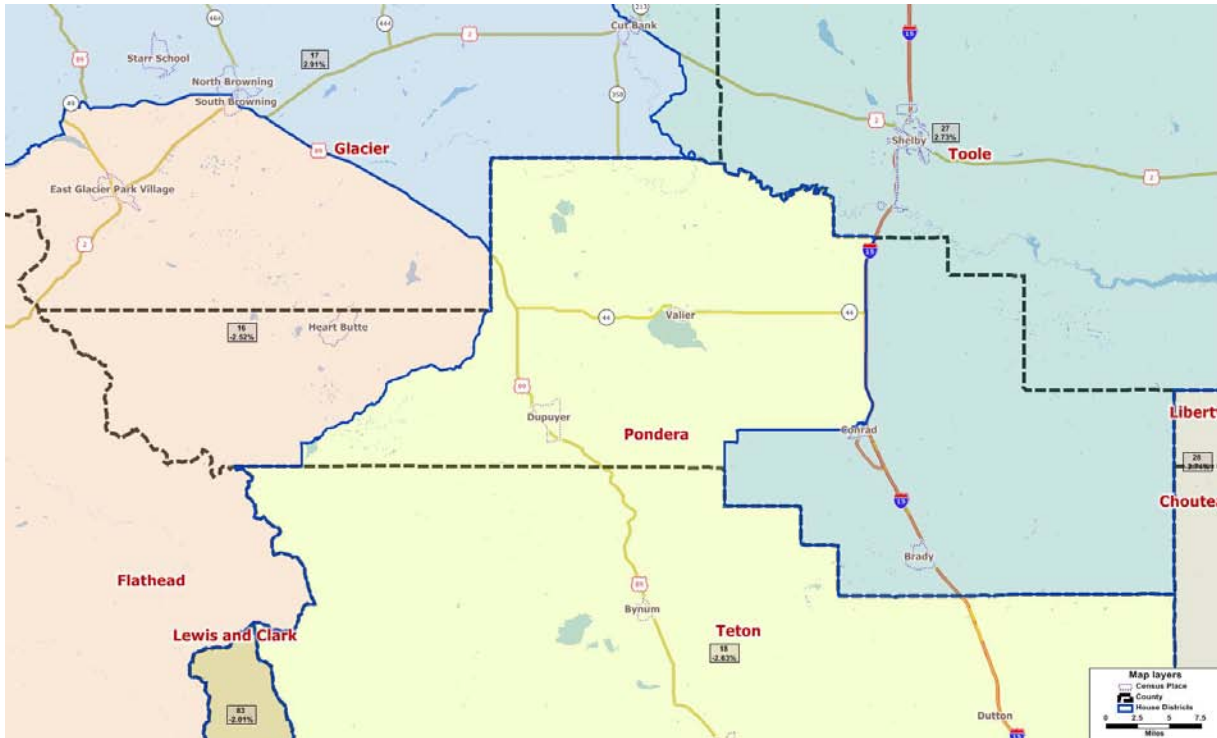
Other counties included in proposed house district (# of people)

15 – Flathead (5), Glacier (2,148), Lake (6,813), Missoula (52)

27 – Glacier (2,506), Teton (1,536), Toole (437)

Subdivision Plan

Theme: Attempt to keep political subdivisions intact



	<u>2010</u>	<u>2000</u>	<u>% Change</u>
County Population	6,153	6,424	-4.2%

Proposed Districts: 3 total

Proposed District Number	Total Population	Deviation*	# of People in District from Pondera County
16	9,645	-2.52%	748
18	9,634	-2.63%	1,891
27	10,164	2.73%	3,514

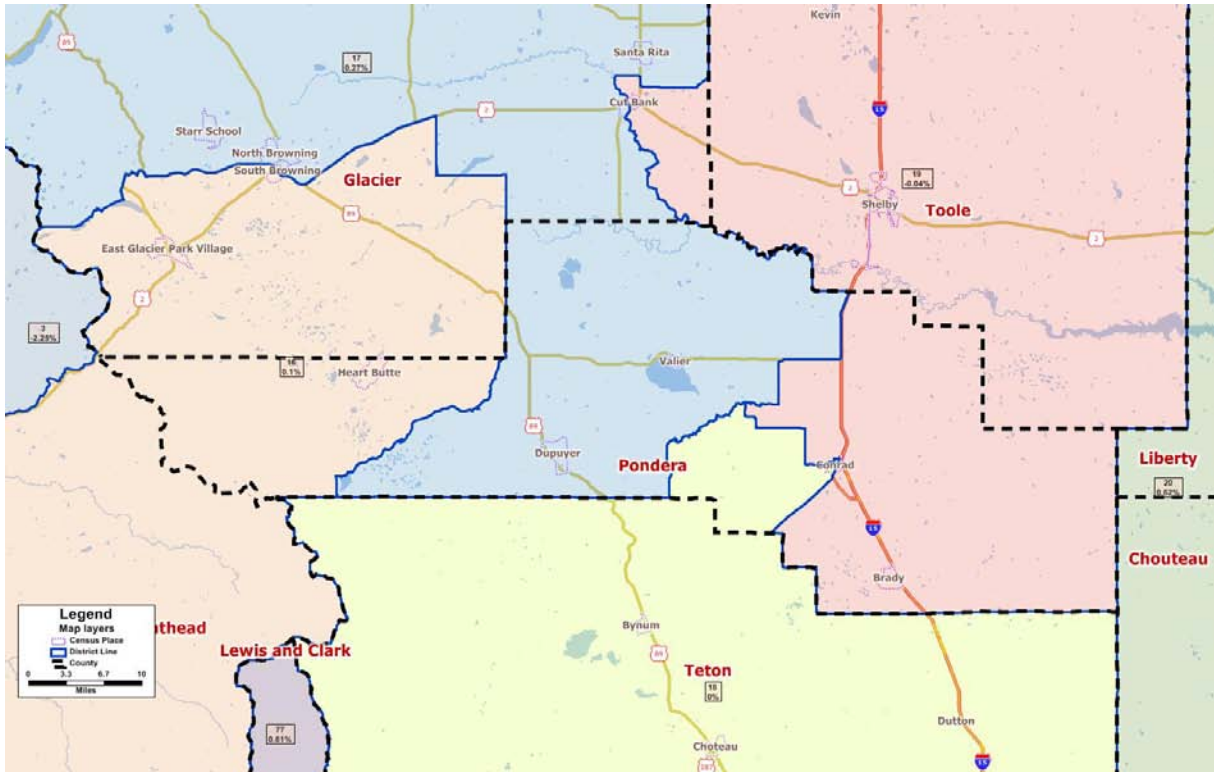
*Ideal house district size after 2010 Census: 9,894 people

Other counties included in proposed house district (# of people)

- 16 – Flathead (168), Glacier (1,891), Lake (6,838)
- 18 – Cascade (1,670), Teton (6,073)
- 27 – Glacier (1,326), Toole (5,324)

Urban Rural Plan

Theme: Emphasize clear lines between population centers and rural areas



	<u>2010</u>	<u>2000</u>	<u>% Change</u>
County Population	6,153	6,424	-4.2%

Proposed Districts: 4 total

Proposed District Number	Total Population	Deviation*	# of People in District from Pondera County
16	9,904	0.10%	748
17	9,921	0.27%	1,655
18	9,894	0.00%	2,340
19	9,890	-0.04%	1,410

*Ideal house district size after 2010 Census: 9,894 people

Other counties included in proposed house district (# of people)

16 – Flathead (65), Glacier (1,977), Lake (7,114)

17 – Glacier (8,266)

18 – Cascade (1,481), Teton (6,073)

19 – Glacier (3,156), Toole (5,324)