

By the Numbers: Powell County

A comparison of Powell County in five proposed redistricting plans

Montana Districting and Apportionment Commission
Post Office Box 201706
Helena, MT 59620-1706

Phone: 406-444-5367

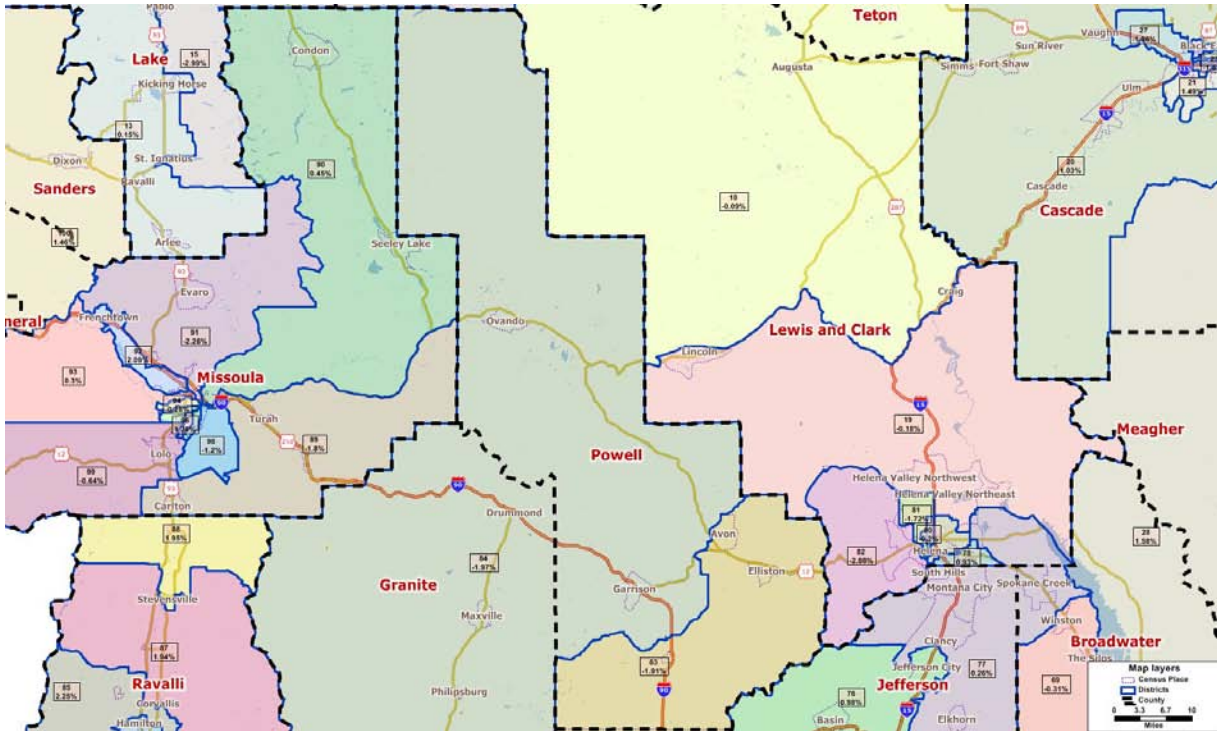
Fax: 406-444-3036

Email: districting@mt.gov

Website: www.leg.mt.gov/districting

Communities Plan

Theme: Integrates Montana communities of interest within multiple criteria



	<u>2010</u>	<u>2000</u>	<u>% Change</u>
County Population	7,027	7,180	-2.1%

Proposed Districts: 2 total

Proposed District Number	Total Population	Deviation*	# of People in District from Powell County
83	9,705	-1.91%	5,987
84	9,699	-1.97%	1,040

*Ideal house district size after 2010 Census: 9,894 people

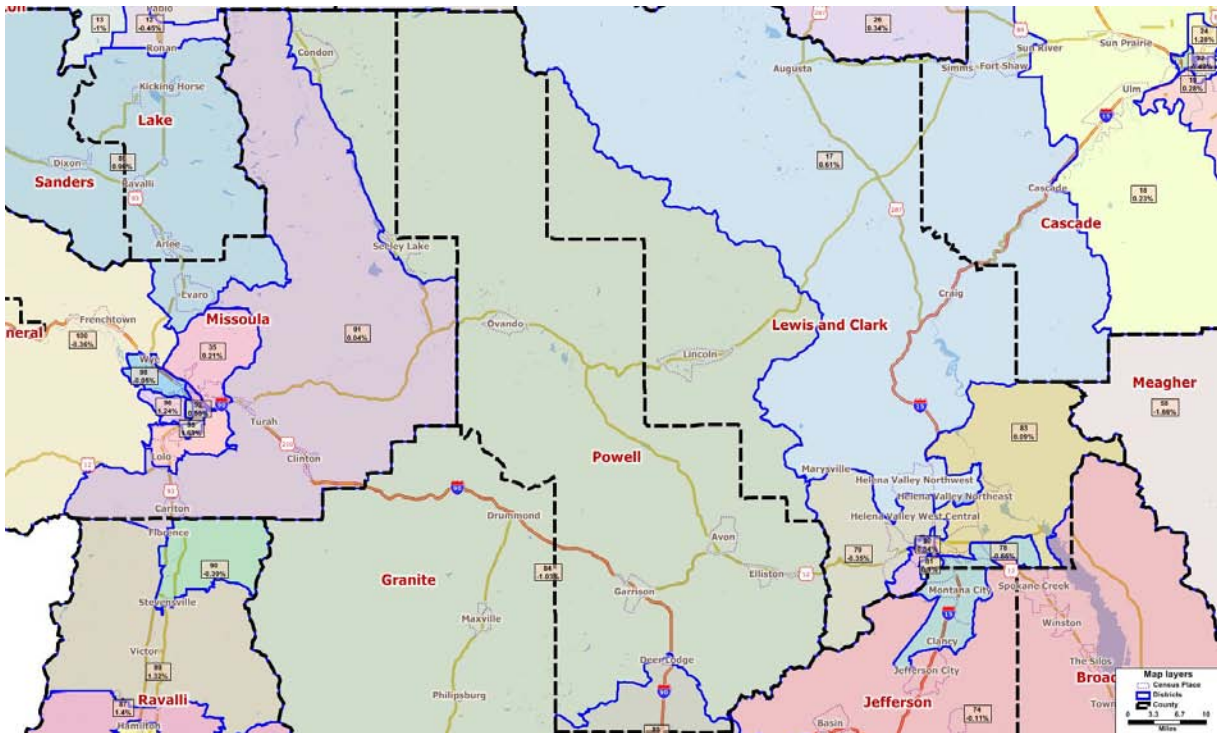
Other counties included in proposed house district (# of people)

83 – Deer Lodge (3,718)

84 – Deer Lodge (5,580), Granite (3,079)

Deviation Plan

Theme: Emphasize the criterion on relative population equality between the districts



	<u>2010</u>	<u>2000</u>	<u>% Change</u>
County Population	7,027	7,180	-2.1%

Proposed Districts: 2 total

Proposed District Number	Total Population	Deviation*	# of People in District from Powell County
84	9,792	-1.03%	3,159
85	10,031	1.38%	3,868

*Ideal house district size after 2010 Census: 9,894 people

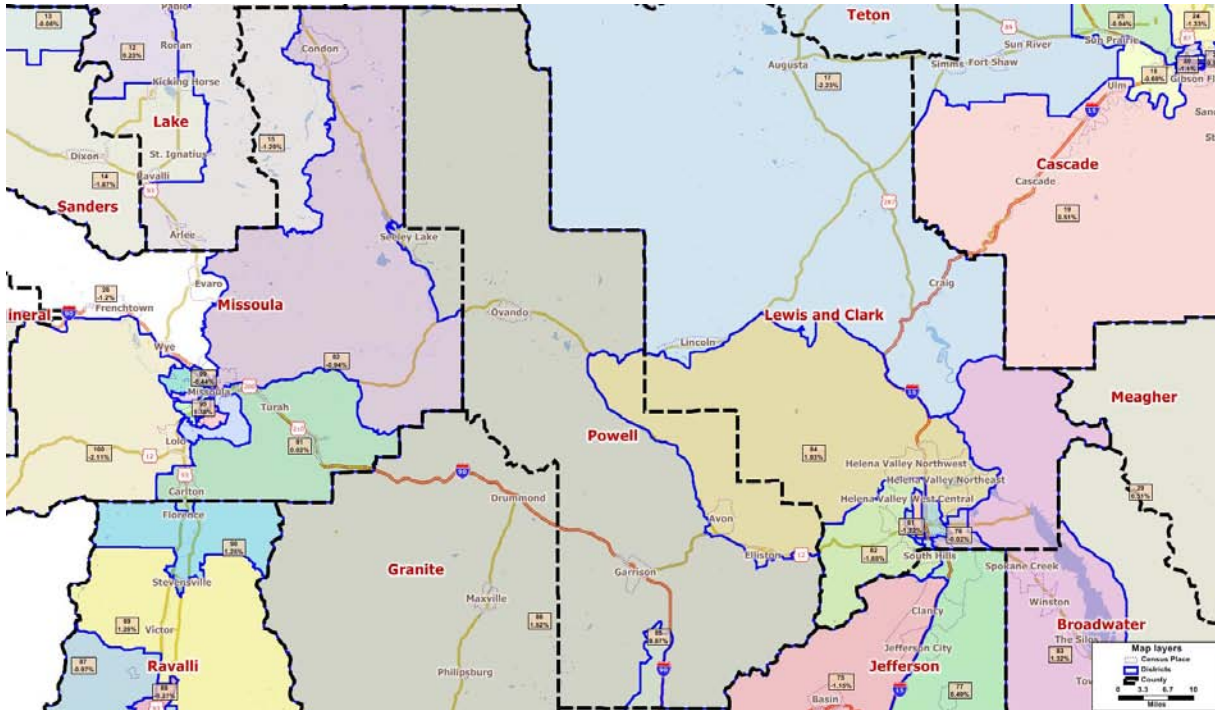
Other counties included in proposed house district (# of people)

84 – Granite (3,079), Lewis and Clark (1,287), Missoula (2,267)

85 – Deer Lodge (6,163)

Existing Plan

Theme: Use the existing legislative district lines as a starting point for new lines



	<u>2010</u>	<u>2000</u>	<u>% Change</u>
County Population	7,027	7,180	-2.1%

Proposed Districts: 3 total

Proposed District Number	Total Population	Deviation*	# of People in District from Powell County
84	10,085	1.93%	450
85	9,980	0.87%	3,618
86	10,044	1.52%	2,959

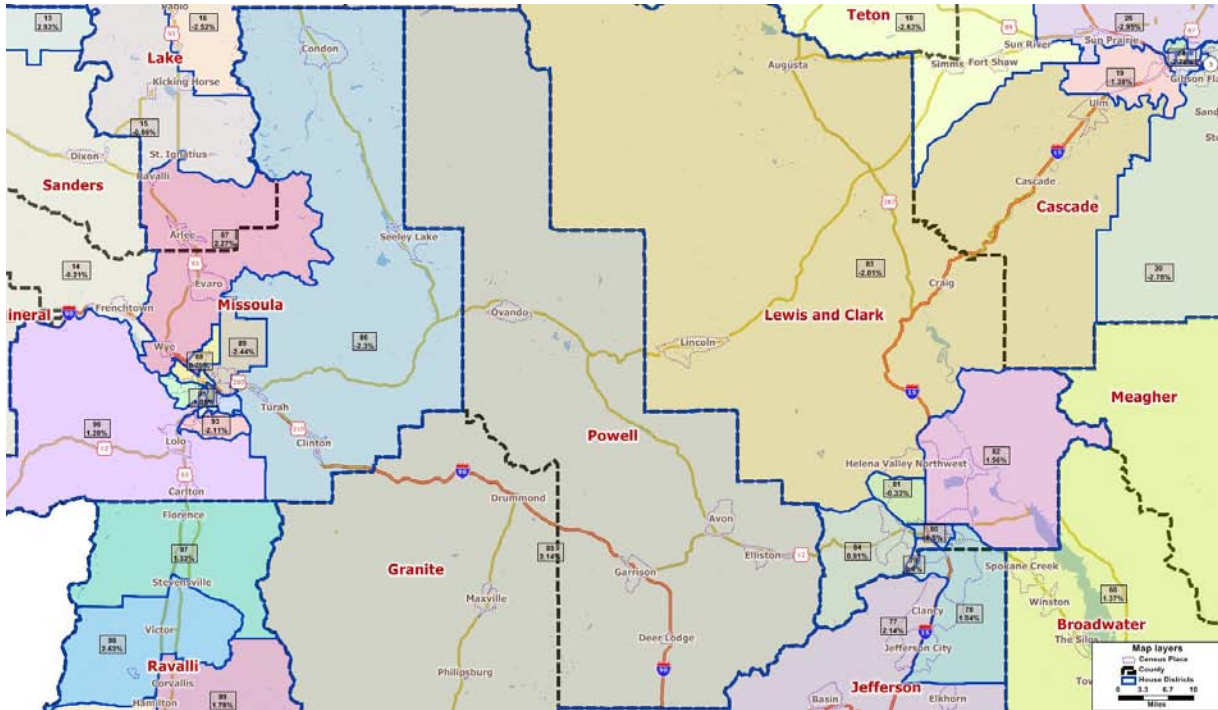
*Ideal house district size after 2010 Census: 9,894 people

Other counties included in proposed house district (# of people)

- 84 – Lewis and Clark (9,635)
- 85 – Deer Lodge (6,362)
- 86 – Deer Lodge (2,243), Granite (3,079), Missoula (1,763)

Subdivision Plan

Theme: Attempt to keep political subdivisions intact



	<u>2010</u>	<u>2000</u>	<u>% Change</u>
County Population	7,027	7,180	-2.1%

Proposed Districts: 1 total

Proposed District Number	Total Population	Deviation*	# of People in District from Powell County
85	10,106	2.14%	7,027

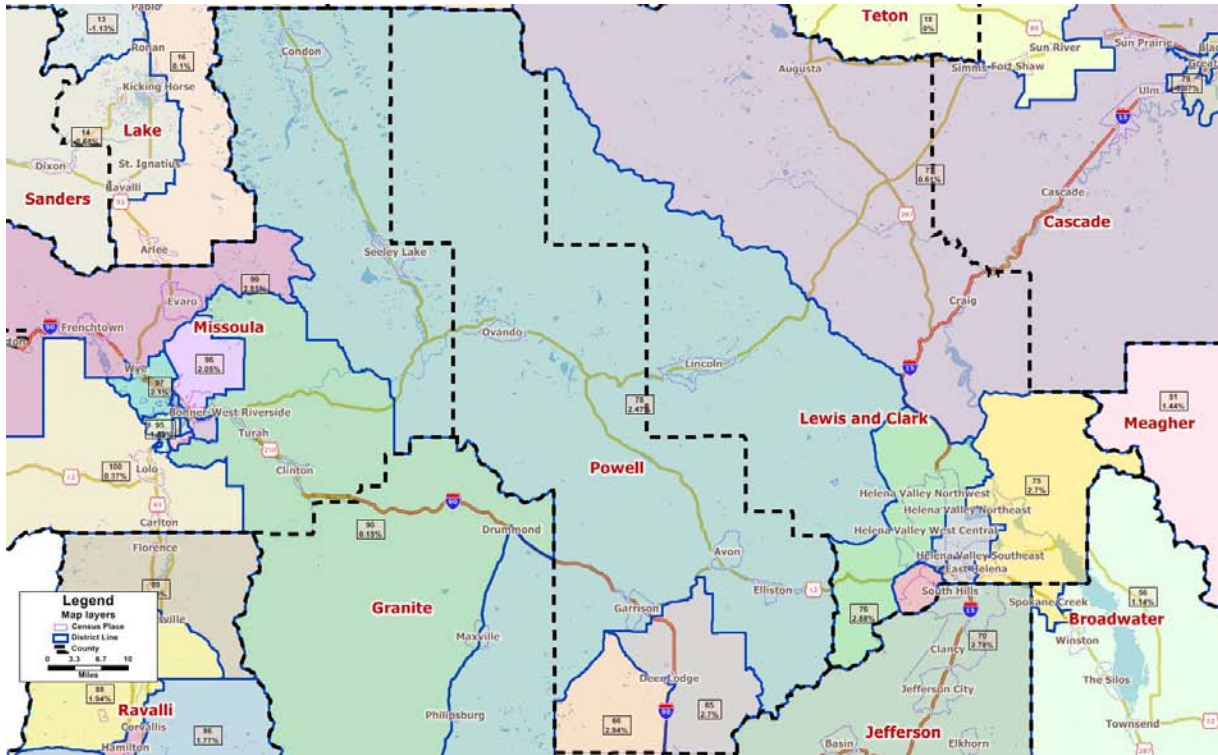
*Ideal house district size after 2010 Census: 9,894 people

Other counties included in proposed house district (# of people)

85 – Granite (3,079)

Urban Rural Plan

Theme: Emphasize clear lines between population centers and rural areas



	<u>2010</u>	<u>2000</u>	<u>% Change</u>
County Population	7,027	7,180	-2.1%

Proposed Districts: 3 total

Proposed District Number	Total Population	Deviation*	# of People in District from Powell County
65	10,161	2.70%	3,043
66	10,185	2.94%	2,555
78	10,138	2.47%	1,429

*Ideal house district size after 2010 Census: 9,894 people

Other counties included in proposed house district (# of people)

65 – Deer Lodge (136), Silver Bow (6,982)

66 – Deer Lodge (7,630)

78 – Deer Lodge (1,532), Granite (2,034), Lewis and Clark (2,326), Missoula (2,817)