

By the Numbers: Richland County

A comparison of Richland County in five proposed redistricting plans

Montana Districting and Apportionment Commission
Post Office Box 201706
Helena, MT 59620-1706

Phone: 406-444-5367

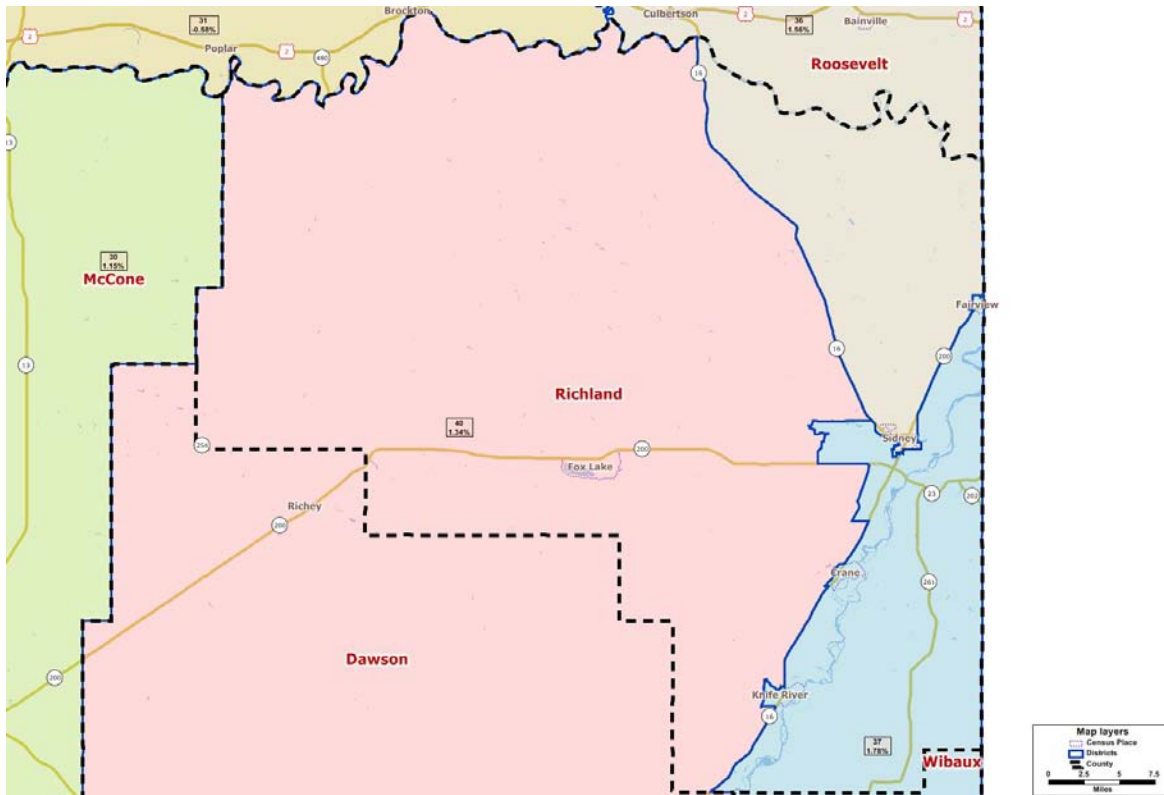
Fax: 406-444-3036

Email: districting@mt.gov

Website: www.leg.mt.gov/districting

Communities Plan

Theme: Integrates Montana communities of interest within multiple criteria



	<u>2010</u>	<u>2000</u>	<u>% Change</u>
County Population	9,746	9,667	0.8%

Proposed Districts: 3 total

Proposed District Number	Total Population	Deviation*	# of People in District from Richland County
36	10,048	1.56%	5,870
37	10,070	1.78%	2,815
40	10,027	1.34%	1,061

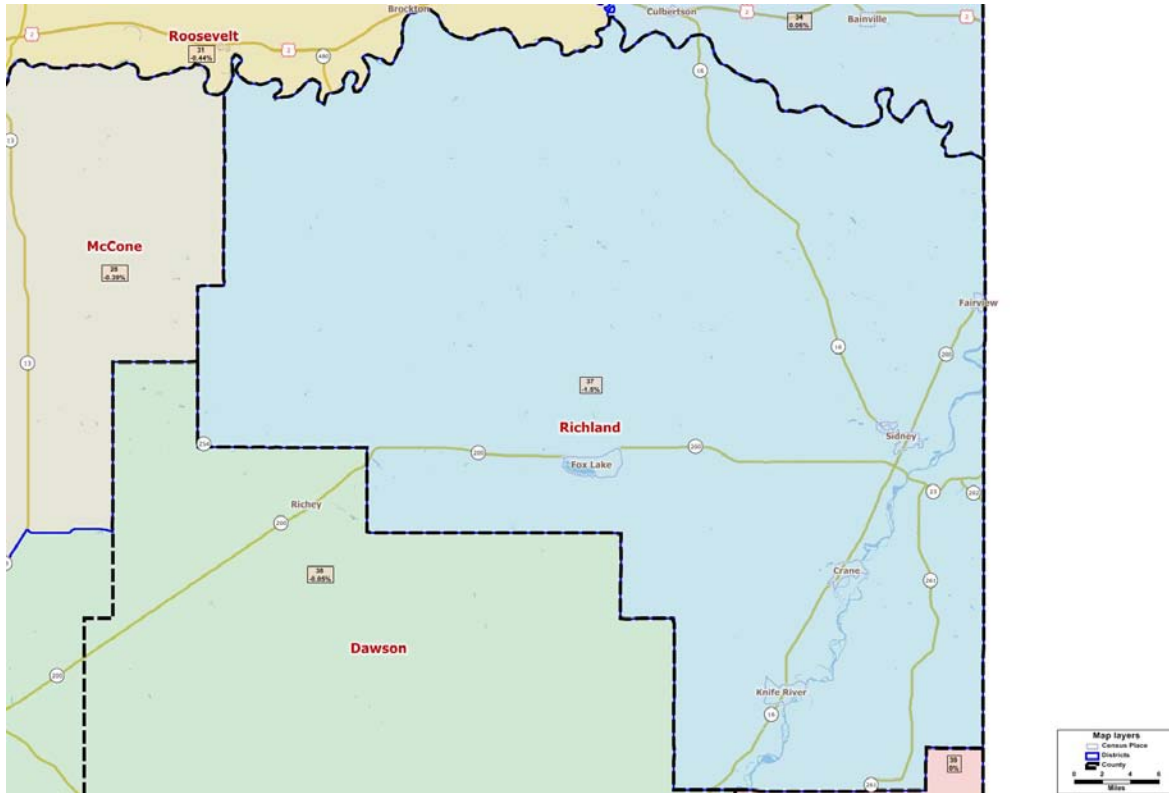
*Ideal house district size after 2010 Census: 9,894 people

Other counties included in proposed house district (# of people)

- 36 – Roosevelt (1,578), Sheridan (2,600)
- 37 – Carter (1,160), Custer (596), Fallon (2,890), Powder River (814), Prairie (1,179), Wibaux (1,017)
- 40 – Dawson (8,966)

Deviation Plan

Theme: Emphasize the criterion on relative population equality between the districts



	<u>2010</u>	<u>2000</u>	<u>% Change</u>
County Population	9,746	9,667	0.8%

Proposed Districts: 1 total

Proposed District Number	Total Population	Deviation*	# of People in District from Richland County
37	9,746	-1.50%	9,746

*Ideal house district size after 2010 Census: 9,894 people

Other counties included in proposed house district (# of people)

37 - None

Existing Plan

Theme: Use the existing legislative district lines as a starting point for new lines



	<u>2010</u>	<u>2000</u>	<u>% Change</u>
County Population	9,746	9,667	0.8%

Proposed Districts: 1 total

Proposed District Number	Total Population	Deviation*	# of People in District from Richland County
37	9,746	-1.50%	9,746

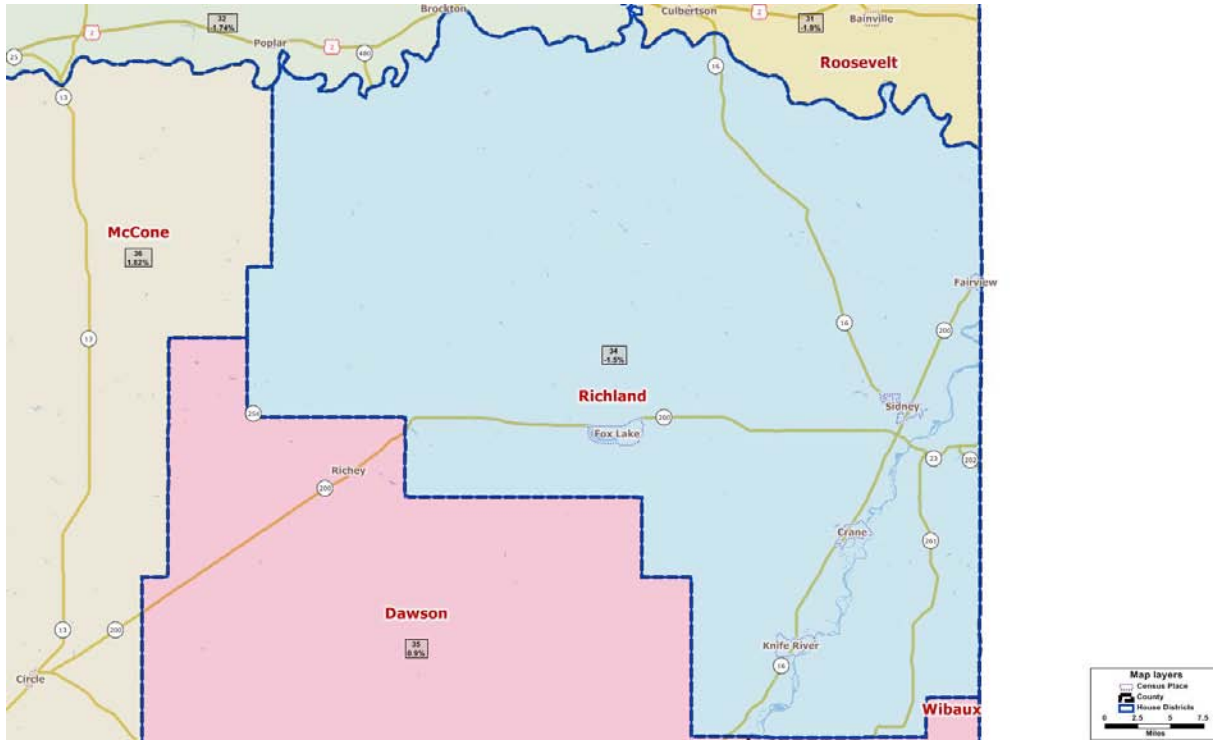
*Ideal house district size after 2010 Census: 9,894 people

Other counties included in proposed house district (# of people)

37 – None

Subdivision Plan

Theme: Attempt to keep political subdivisions intact



	<u>2010</u>	<u>2000</u>	<u>% Change</u>
County Population	9,746	9,667	0.8%

Proposed Districts: 1 total

Proposed District Number	Total Population	Deviation*	# of People in District from Richland County
34	9,746	-1.50%	9,746

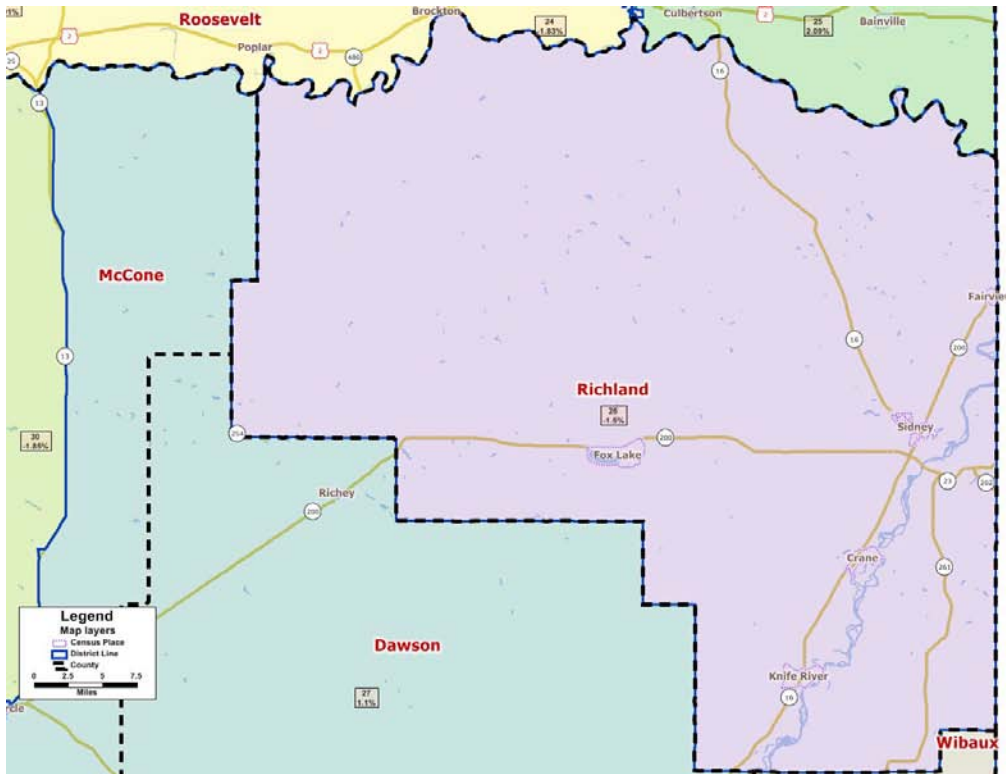
*Ideal house district size after 2010 Census: 9,894 people

Other counties included in proposed house district (# of people)

34 - None

Urban Rural Plan

Theme: Emphasize clear lines between population centers and rural areas



	<u>2010</u>	<u>2000</u>	<u>% Change</u>
County Population	9,746	9,667	0.8%

Proposed Districts: 1 total

Proposed District Number	Total Population	Deviation*	# of People in District from Richland County
26	9,746	-1.50%	9,746

*Ideal house district size after 2010 Census: 9,894 people

Other counties included in proposed house district (# of people)

26 - None