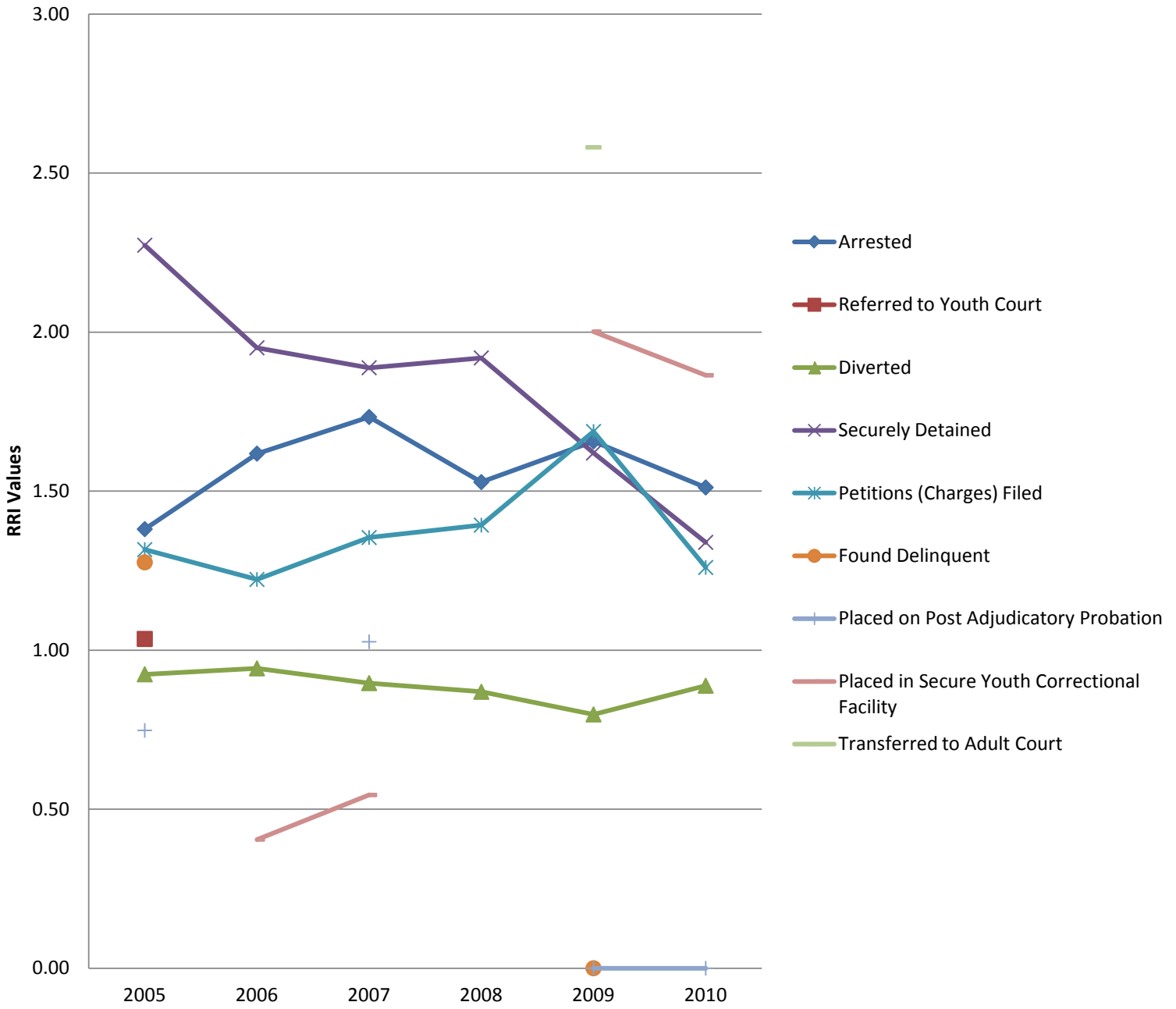


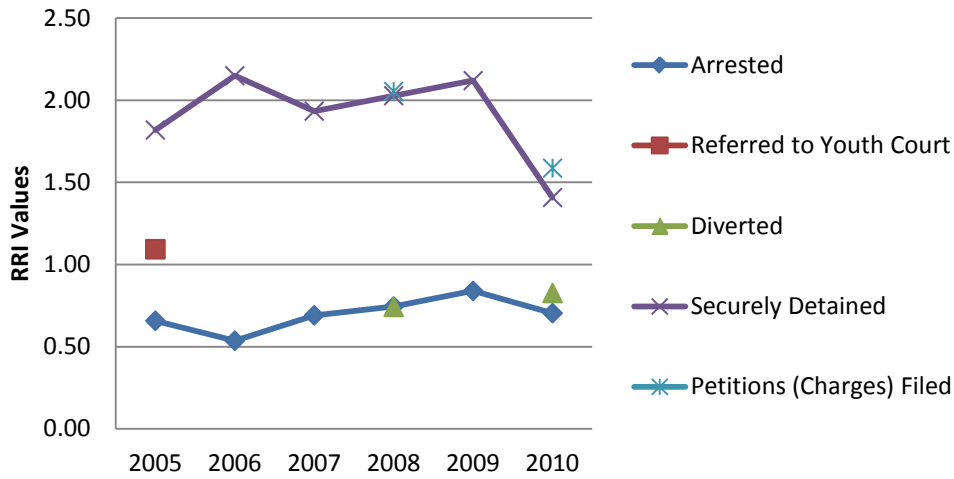
MT 's Statistically Significant RRI Trends for AI/AN Youth



Statewide Statistically Significant Hispanic Trends

	2005	2006	2007	2008	2009	2010
Arrested	0.66	0.54	0.69	0.74	0.84	0.70
Referred to Youth Court	1.09					
Diverted				0.74		0.83
Securely Detained	1.82	2.15	1.93	2.03	2.12	1.41
Petitions (Charges) Filed				2.05		1.59
Found Delinquent						
Placed on Post Adjudicatory Probation						
Placed in Secure Youth Correctional Facility						
Transferred to Adult Court						

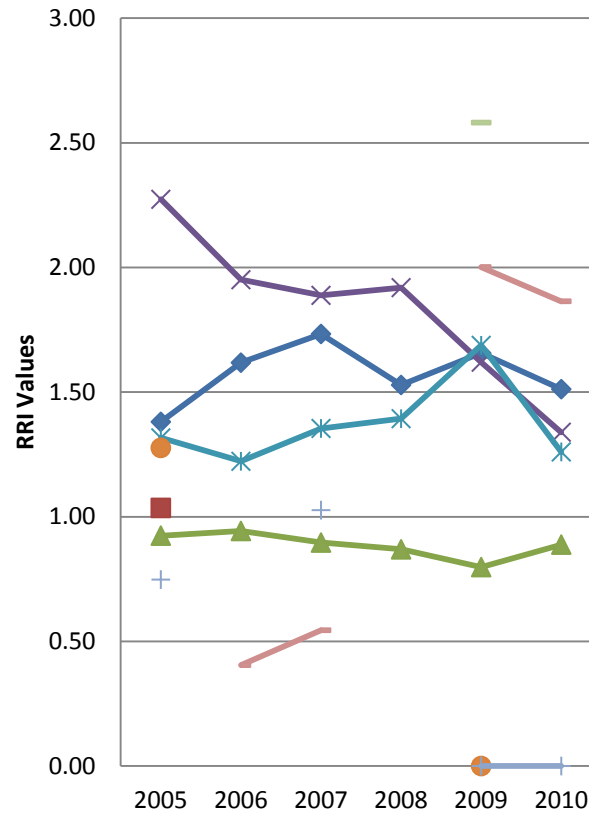
Statewide Statistically Significant Hispanic RRI Trends



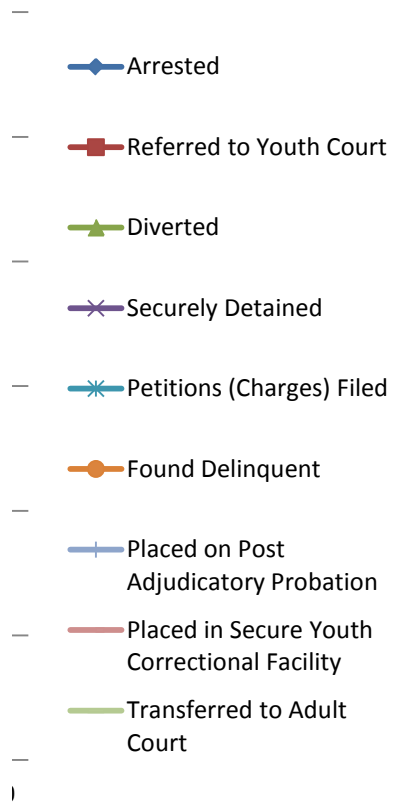
MT 's Statistically Significant RRI Trends for AI/AN Youth

	2005	2006	2007	2008	2009	2010
Arrested	1.38	1.62	1.73	1.53	1.66	1.51
Referred to Youth Court	1.04					
Diverted	0.92	0.94	0.90	0.87	0.80	0.89
Securely Detained	2.27	1.95	1.89	1.92	1.62	1.34
Petitions (Charges) Filed	1.32	1.22	1.35	1.39	1.69	1.26
Found Delinquent	1.28				--	
Placed on Post Adjudicatory Probation	0.75		1.03		--	--
Placed in Secure Youth Correctional Facility		0.40	0.54		2.00	1.86
Transferred to Adult Court					2.58	

**MT 's Statistically Significant
for AI/AN You**



Ant RRI Trends with



MT Statistically Significant RRI Trends for Other/Mixed

Juvenile System Contact Points for Other/Mixed	2010
Arrested	
Referred to Youth Court	
Diverted	
Securely Detained	
Petitions (Charges) Filed	
Found Delinquent	
Placed on Post Adjudicatory Probation	
Placed in Secure Youth Correctional Facility	
Transferred to Adult Court	