

## OUR MISSION

The Montana Department of Corrections enhances public safety, promotes positive change in offender behavior, reintegrates offenders into the community and supports victims of crime.

## Message from the director:

Effective corrections is about innovation and a willingness to look beyond what has always been done in an effort to find more effective methods of supervising offenders. Montana correctional professionals are never satisfied with the status quo. We always want to further reduce recidivism, meet victims' needs and improve the chances for offenders to build crime-free lives that enhance public safety.

In Montana, we have been very successful in achieving those goals. Our incarceration rate is lower than that of 33 states, and our recidivism rate is below average among the states that measure it the same way. We are expanding the ability of victims to register for notification of offender status changes, operating meth treatment programs with good track records and broadening re-entry programs for inmates.

While these are significant developments in Montana's corrections system, we still face challenges. Crime continues to occur and some offenders fail to take advantage of services offered to them.

Tough fiscal times lie ahead as we continue struggling to maintain necessary services and programs in the face of limited revenue and tight budgets. We realize that, like all Montanans, the department must do some belt-tightening and look for ways to be efficient.

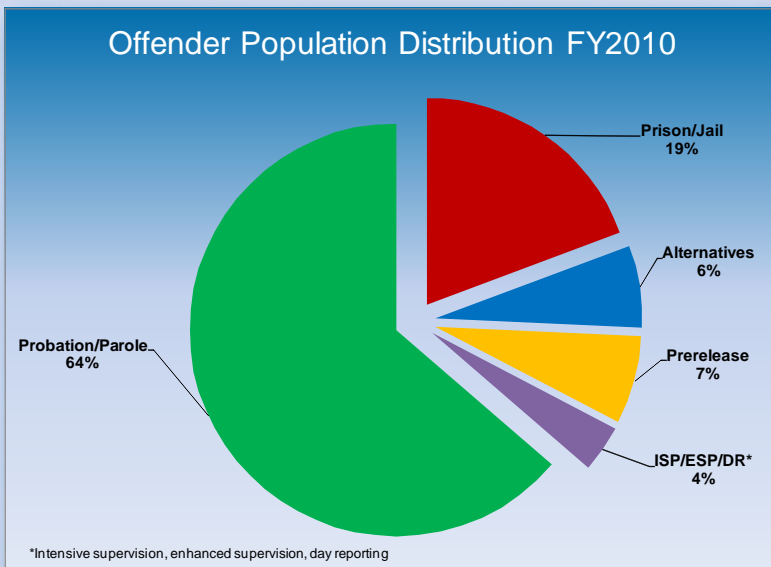
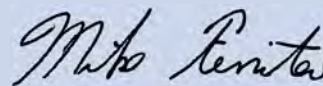
What we won't do is jeopardize public safety. Montanans expect offenders to be held accountable and have opportunities for rehabilitation. Those remain the mainstays of the Montana Department of Corrections' mission.

The effects of the recent economic downturn go beyond the budget. As the economy shrank, so did the number of jobs. Employment is a key for offenders trying to turn their lives around and the inability to find work can be a severe setback, especially for those being released from prison.

We provide an array of training programs to make inmates more employable when they return to their communities and Montana employers have always worked well with the department in helping offenders get and keep jobs. Employers deserve thanks from all Montanans for their contribution to public safety and their willingness to help others leave lives of crime behind.

By any measure, corrections is a very unique profession. We deal with an inherently unpredictable population and have little control over the number of offenders placed under our jurisdiction. But we continue to look for new ways of doing business that are more effective and make wise use of taxpayers' dollars.

The Montana Department of Corrections boasts some of the most dedicated and professional public employees anywhere. They recognize that what they do makes a difference and can actually save lives. They work hard and get satisfaction from more than a paycheck. I consider it a privilege to work with them every day.



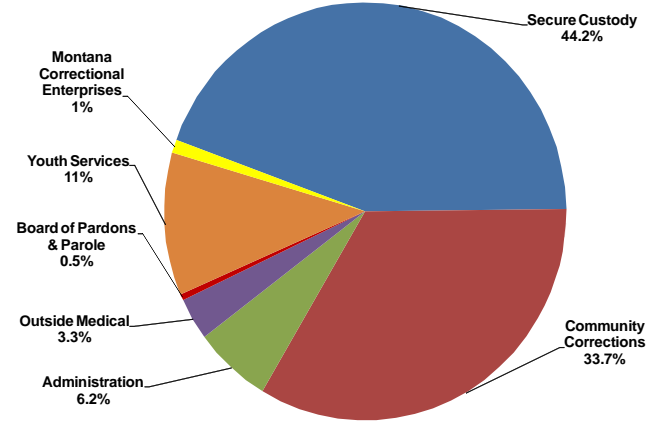
# 2009-10 in review

- Received a study of the state's methamphetamine treatment programs that found none of the nearly 300 offenders completing the program had been convicted of new drug crimes
- Collaborated with Montana State Prison's victim information officer to provide victim impact training for 300 offenders in the prison's intensive treatment units
- Reduced workers' compensation insurance claims, resulting in a 2011 premium decrease of \$473,000
- Revamped the Intensive Challenge Program (boot camp) at Montana Women's Prison into an orientation unit to better prepare new inmates for successful entry to the prison and therapeutic community model
- Developed and implemented features in the Offender Management Information System for tracking random drug testing, grievances, prison rape investigations, facility visiting, chronological entries, and victim information
- Decreased spending on overtime for Montana State Prison correctional officers by \$500,000 in two years and made progress in achieving adequate staffing relief factor
- Obtained reaccreditation from the American Correctional Association for juvenile parole and Pine Hills Youth Correctional Facility, with each program earning a perfect compliance rating of 100 percent
- Launched the "Corrections Distance Education Program," which provides staff 24/7 online access to training on a variety of subjects, automated enrollment and tracking of all online professional development
- Moved the START revocation and sanction center to new, larger quarters with 10 of the 30 additional beds designated for offenders with mental illness
- Using a federal grant, hired eight specialized probation and parole officers to focus on reducing recidivism among Native American offenders and those rural offenders with both mental health and chemical dependency problems
- Oversaw a budget in which spending was within 2 percent of projections for fiscal year 2010
- Reduced the number of on-the-job accidents at Montana State Prison by 39 percent due to efforts of the safety committee
- Increased academic achievement at Pine Hills and Riverside by at least one grade level in a 90- to 180-day time frame
- Developed a Re-entry Task Force, a cooperative effort by community corrections and prison system to help transition offenders without duplication of services and to coordinate with communities around Montana to ensure a continuum of care providing inmates with as smooth a transition as possible to their communities
- Expanded canteen services to all Montana correctional facilities, offering commissary services to more than 2,200 inmates without an increase in civilian staffing
- Supported Passages' partnership with Montana State University-Billings to offer classes including workplace math, family economics and financial education, fundamentals of writing and employment skills geared towards offenders
- Developed and implemented an agency fleet vehicle management program
- Launched a system that allows families of inmates to deposit money into inmate accounts using the Internet rather than cumbersome money orders
- Updated and transitioned the offender legal access system to a more efficient and cost-effective system
- Implemented the Youth Management System for tracking juveniles and electronically managing information about them

# FY2010 Budget

## Total General Fund Expenditures excluding Board of Pardons and Parole

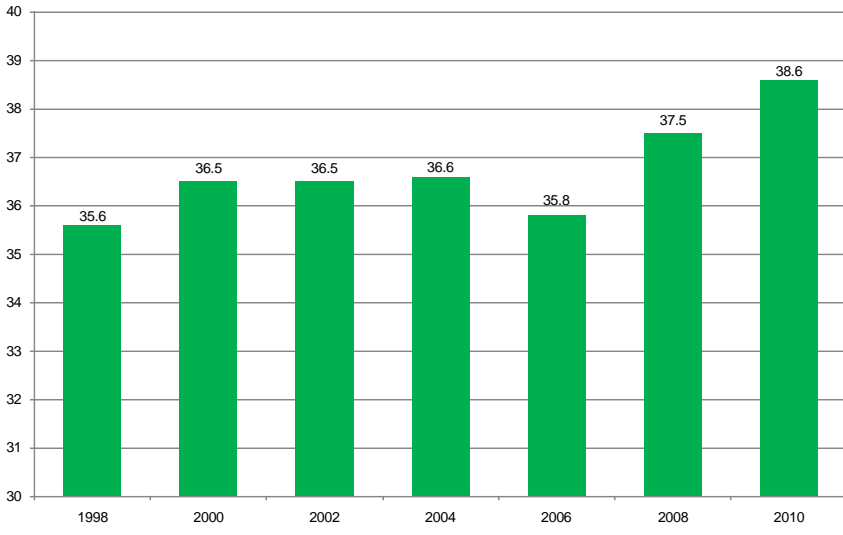
|                          | FY2010       | FY2008       |
|--------------------------|--------------|--------------|
| Administration           | \$10,566,797 | \$11,598,287 |
| Community Corrections    | \$57,148,024 | \$52,457,344 |
| Secure Care              | \$72,946,667 | \$66,851,728 |
| Correctional Enterprises | \$1,736,565  | \$2,000,665  |
| Youth Services           | \$18,649,456 | \$19,287,797 |
| Outside Medical          | \$5,569,867  | \$4,561,463  |



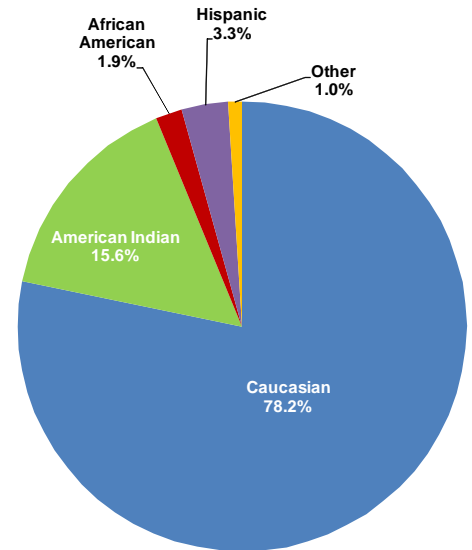
|                      |                        |                          |                  |           |                     |   |
|----------------------|------------------------|--------------------------|------------------|-----------|---------------------|---|
| Montana State Prison | Montana Women's Prison | Contract Prisons         | County Jail Hold | MASC      | START               | ISP                                       |
| \$87.91              | \$109.05               | \$67.86                  | \$63.56          | \$74.81   | \$72.37             | \$8.11                                    |
| Probation and Parole | Prerelease Centers M/F | Meth Treatment M/F       | WATCH (DUI) M/F  | Boot Camp | CD Treatment (male) | Sanction Assessment CD Treatment (female) |
| \$4.69               | \$54/\$64              | \$122/\$181              | \$82/\$97        | \$91.42   | \$72.29             | \$74.23                                   |
| Pine Hills Facility  | Riverside Facility     | Youth Transition Centers | Juvenile Parole  |           |                     |   |
| \$257.39             | \$391.10               | \$260.64                 | \$73.19          |           |                     |   |

# By The Numbers...

## Average Age of Montana Offenders FY1998-2010



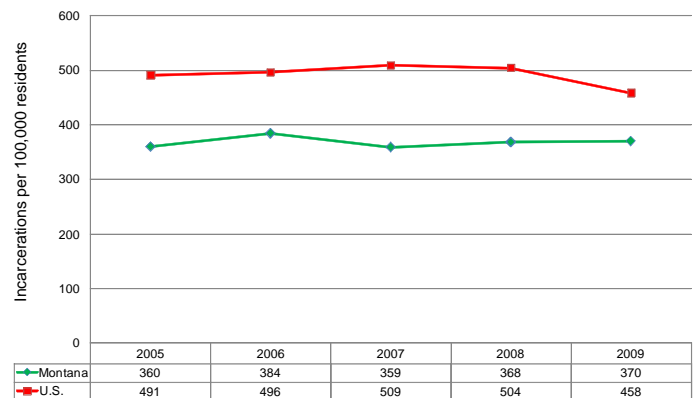
## Ethnicity of Offenders



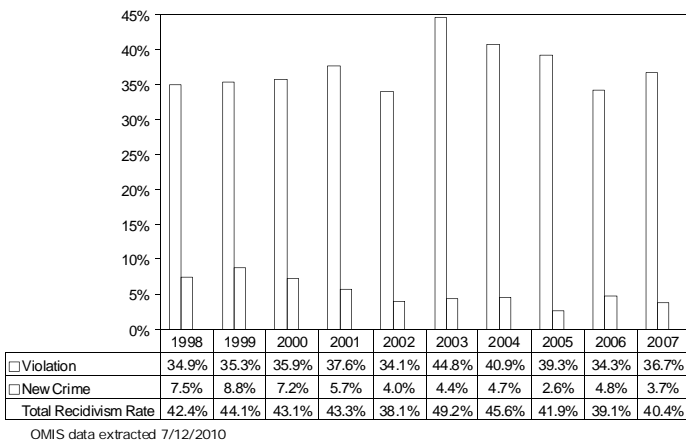
## Top 10 Conviction Offenses FY2005-2010

- | Males                                    | Females                                  |
|--|--|
| 1. POSSESSION OF DRUGS                   | 1. POSSESSION OF DRUGS                   |
| 2. FELONY DUI                            | 2. THEFT                                 |
| 3. THEFT                                 | 3. ISSUING A BAD CHECK                   |
| 4. CRIMINAL ENDANGERMENT                 | 4. FORGERY                               |
| 5. BURGLARY                              | 5. FELONY DUI                            |
| 6. DISTRIBUTION OF DRUGS                 | 6. CRIMINAL ENDANGERMENT                 |
| 7. ASSAULT WITH A WEAPON                 | 7. FRAUDULENTLY OBTAINING DRUGS          |
| 8. ISSUING A BAD CHECK                   | 8. DISTRIBUTION OF DRUGS                 |
| 9. PARTNER/FAMILY MEMBER ASSAULT         | 9. DRUG OFFENSES OTHER STATE             |
| 10. POSSESSION WITH INTENT TO DISTRIBUTE | 10. POSSESSION WITH INTENT TO DISTRIBUTE |

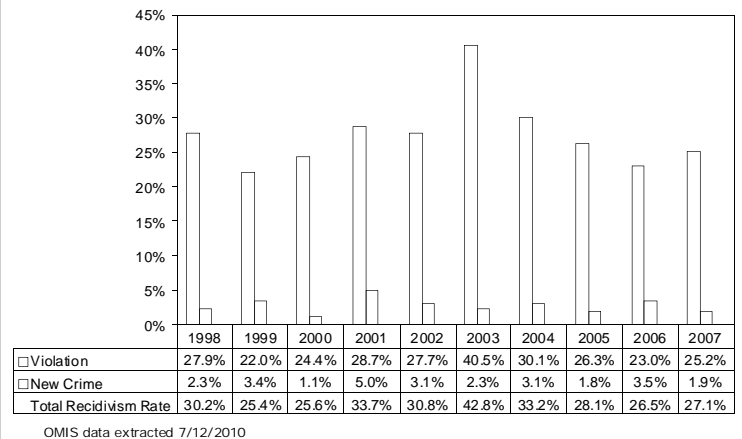
## Prison Incarceration Rate Montana and U.S. 2005-2009



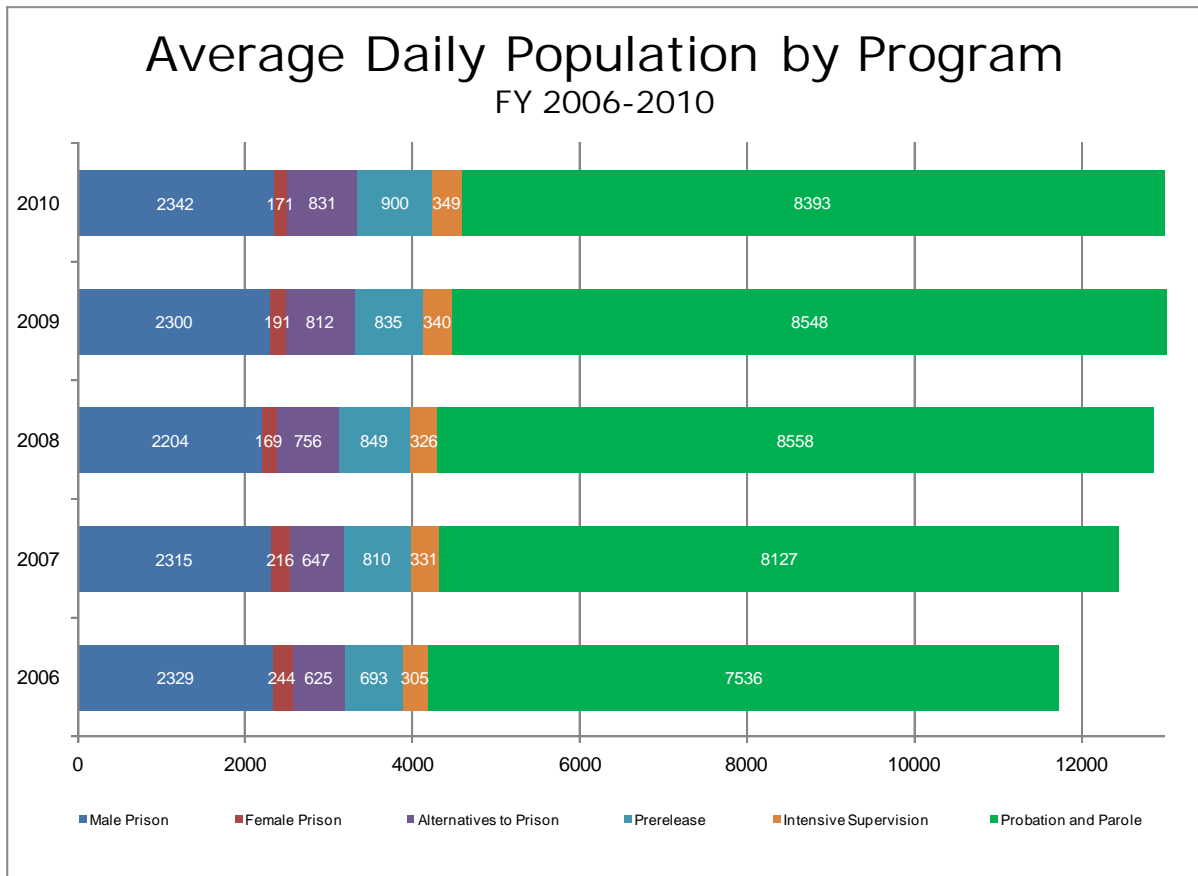
## Male 3-Year Prison Recidivism Rate FY 1998 - 2007



## Female 3-Year Prison Recidivism Rate FY 1998 - 2007

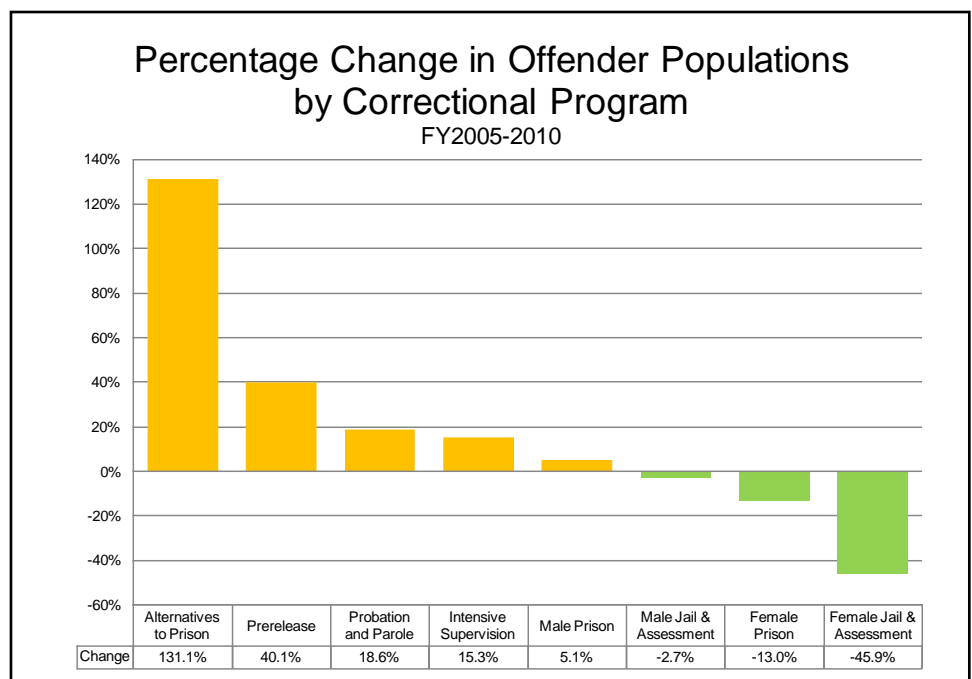


# Population



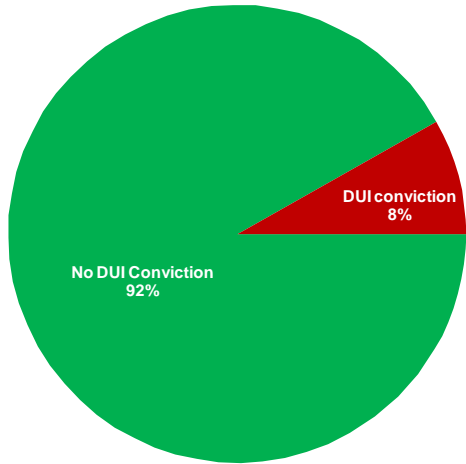
The total offender population increased 1 percent to 12,986 between fiscal years 2008 and 2010. The Department of Corrections continues its efforts to manage offenders in programs and facilities other than prison. Such programs can cost 24 times less per day than prison and provide more individualized focus on an offender's needs. In fiscal year 2006, almost 22 percent of the average daily population was in prison. In fiscal year 2010, that had dropped to 19.3 percent.

Since 2005, the offender population in alternatives to prison – primarily treatment programs – increased 131 percent and the prerelease center population grew by 40 percent. The number of offenders on probation or parole rose by more than 18 percent while the intensive supervision program expanded by more than 15 percent. At the same time, the male prison population increased only 5 percent and other secure populations declined.

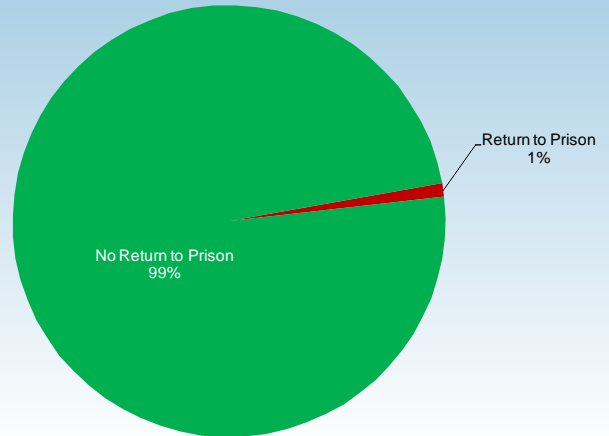


# Programs

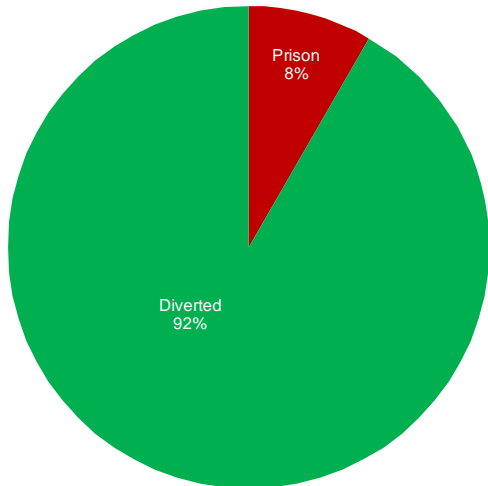
WATCH DUI Treatment Results  
FY2002-2010



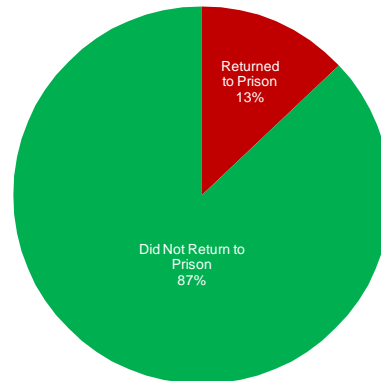
Meth Treatment Programs Success Rate  
Outcomes for first 299 Offenders Completing  
June 2010



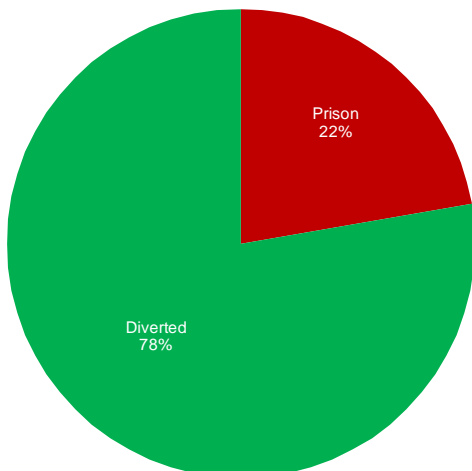
Passages ASRC (Assessment, Sanction, Revocation Center)  
Recidivism Rate  
3-year outcomes for 24 offenders released in FY2007



Return Rate of Offenders At Least One Year After Leaving  
Work and Re-entry Center  
FY2009-2010



START (Sanction, Treatment, Assessment, Revocation and Transition)  
Recidivism Rate  
3-year outcomes for 283 offenders released in FY2007



*Montana's emphasis on treatment programs for offenders has produced positive results. From the WATCH program for felony drunken-driving offenders at Warm Springs and Glendive to the START revocation center at Anaconda and from the meth treatment centers in Lewistown and Boulder to the Work and Re-entry Center at Montana State Prison, a large majority of offenders completing these programs are successful.*

### Director's Office

|   |          |
|---|----------|
| Director Mike Ferriter.....                 | 444-4913 |
| Executive Assistant Myrna Omholt-Mason..... | 444-3911 |
| Chief General Counsel Diana Koch.....       | 444-9593 |
| Victim Programs Manager Sally Hilander..... | 444-7461 |
| Communication Director Bob Anez.....        | 444-0409 |

### Administrative and Financial Services

|   |          |
|---|----------|
| Administrator Rhonda Schaffer.....                        | 444-4939 |
| Budget and Program Planning Bureau Chief Kara Sperle..... | 444-4365 |
| Accounting Bureau Chief Kimberly Timm.....                | 444-4903 |
| Contracts Management Bureau Chief Gary Willems.....       | 444-4941 |

### Adult Community Corrections

|  |          |
|--|----------|
| Administrator Pam Bunke.....                                 | 444-9610 |
| Probation & Parole Bureau Chief Ron Alsbury.....             | 444-9529 |
| Facilities Management Bureau Chief Kelly Speer.....          | 444-0401 |
| Probation & Parole Bureau Programs Manager Mike Aldrich..... | 444-1538 |
| Treatment Program Contract Manager Rick Alan Deady.....      | 444-4902 |
| Prerelease Program Contract Manager Judy Little.....         | 444-4910 |
| Interstate Compact Unit Manager Cathy Gordon.....            | 444-4916 |

### Information Technology

|  |          |
|--|----------|
| Administrator John Daugherty.....                        | 444-4469 |
| Application Development Bureau Chief Anita Pisarsky..... | 444-5510 |
| Network Operations Bureau Chief Jon Straughn.....        | 444-1706 |
| Statistics and Data Quality Bureau Chief Dewey Hall..... | 444-6719 |

### Staff Services

|   |          |
|---|----------|
| Administrator Steve Barry.....                                | 444-0406 |
| Human Resources Bureau Chief Ken McElroy.....                 | 444-0445 |
| Staff Development and Training Bureau Chief Curt Swenson..... | 444-3909 |
| Investigations Bureau Chief Dale Tunnell.....                 | 444-4761 |
| Legal Services Bureau Chief Colleen Ambrose.....              | 444-4152 |
| American Indian Liaison Myrna Kuka.....                       | 444-0403 |

### Youth Services

|  |          |
|--|----------|
| Youth Community Corrections Bureau Chief Karen Duncan.....               | 444-4390 |
| Pine Hills Youth Correctional Facility Superintendent Steve Ray Jr.....  | 233-2290 |
| Riverside Youth Correctional Facility Superintendent Cindy McKenzie..... | 225-4501 |

### Montana Correctional Enterprises

|  |                   |
|--|-------------------|
| Administrator Gayle Lambert.....               | 846-1320 ext 2373 |
| Administrative Officer Gail Boese.....         | 846-1320 ext 2351 |
| Industries Director Johnal Holst.....          | 846-1320 ext 2320 |
| Agriculture Director Bill Dabney.....          | 846-1320 ext 2322 |
| Vocational Education Director Larry Burke..... | 846-1320 ext 2425 |
| Food Factory Director Joe Mihelic.....         | 846-1320 ext 2120 |
| Fiscal Director Andrew Olcott.....             | 846-1320 ext 2324 |

### Montana State Prison

|   |                   |
|---|-------------------|
| Warden Mike Mahoney.....                                  | 846-1320 ext 2200 |
| Deputy Warden Ross Swanson.....                           | 846-1320 ext 2377 |
| Contract Placement Bureau Chief Patrick Smith.....        | 846-1320 ext 2556 |
| Correctional Services Bureau Chief Candyce Neubeauer..... | 846-1320 ext 2459 |
| Medical Services Bureau Chief Cathy Redfern.....          | 846-1320 ext 2448 |

### Montana Women's Prison

|  |          |
|--|----------|
| Warden Jo Acton.....                   | 247-5100 |
| Deputy Warden Security Bob Paul.....   | 247-5121 |
| Deputy Warden Treatment Sue Orand..... | 247-5157 |

## Correctional Facilities

|  |                   |
|--|-------------------|
| <b>Montana State Prison</b> .....                        | 846-1320          |
| 400 Conley Lake Rd. Deer Lodge 59722                     |                   |
| <b>Montana Women's Prison</b> .....                      | 247-5100          |
| 701 S. 27 St. Billings 59101                             |                   |
| <b>Treasure State Correctional Training Center</b> ..... | 846-1320 ext 2100 |
| 1100 Conley Lake Rd. Deer Lodge 59722                    |                   |
| <b>Missoula Assessment &amp; Sanction Center</b> .....   | 258-4021          |
| 2340 Mullan Rd. Missoula 59808                           |                   |
| <b>Pine Hills Youth Correctional Facility</b> .....      | 232-1377          |
| 4 N. Haynes Ave. Miles City 59301                        |                   |
| <b>Riverside Youth Correctional Facility</b> .....       | 225-4500          |
| 2 Riverside Rd. Boulder 59632-0088                       |                   |
| <b>Youth Transition Centers</b> .....                    | 452-1792          |
| 4212 3rd Ave. S. Great Falls 59405                       |                   |
| <b>Crossroads Correctional Center</b> .....              | 434-7055          |
| 50 Crossroads Dr. Shelby 59474                           |                   |
| <b>Cascade County Regional Prison</b> .....              | 727-1930          |
| 3800 Ulm N. Frontage Rd. Great Falls 59404               |                   |
| <b>Dawson County Regional Prison</b> .....               | 377-7687          |
| 440 Colorado Blvd. Glendive 59330                        |                   |
| <b>Nexus Meth Treatment Center</b> .....                 | 535-6660          |
| P.O. Box 1200 Lewistown 59457                            |                   |
| <b>Elkhorn Meth Treatment Center</b> .....               | 447-5300          |
| 1 Riverside Rd. Boulder 59632                            |                   |
| <b>WATCH East</b> .....                                  | 377-6001          |
| 700 E. Little St. Glendive 59330                         |                   |
| <b>WATCH West</b> .....                                  | 693-2272          |
| P.O. Box G Warm Springs 59756                            |                   |
| <b>START</b> .....                                       | 563-7002          |
| P.O. Box 1389 Anaconda 59711                             |                   |
| <b>Passages</b> .....                                    | 294-9609          |
| 1001 S. 27th St. Billings 59101                          |                   |
| <b>Billings Prerelease Center</b> .....                  | 259-9695          |
| 3109 1st Ave. N. Billings 59101                          |                   |
| <b>Bozeman Prerelease Center</b> .....                   | 994-0300          |
| 675 S. 16th Ave. Bozeman 59715                           |                   |
| <b>Butte Prerelease Center</b> .....                     | 782-2316          |
| 66 W. Broadway Butte 59701                               |                   |
| <b>Great Falls Prerelease Center</b> .....               | 727-0944          |
| 1019 15th St. N. Great Falls 59401                       |                   |
| <b>Helena Prerelease Center</b> .....                    | 442-6572          |
| 805 Colleen St. Helena 59601                             |                   |
| <b>Missoula Prerelease Center</b> .....                  | 541-9200          |
| 2350 Mullan Rd. Missoula 59808                           |                   |

|  |          |
|--|----------|
| <b>Board of Pardons and Parole</b> ..... | 846-1404 |
| 1002 Hollenbeck Rd. Deer Lodge 59722     |          |
| Executive Director Craig Thomas          |          |
| Parole Board Analyst Julie Thomas        |          |
| Parole Board Analyst Brian Callarman     |          |

# Facilities

Some of the correctional facilities operated in the state of Montana



*Clockwise from top left: The new START revocation and sanction center near Anaconda, Great Falls Prerelease Center, the Work and Re-entry Center at Montana State Prison, Helena Prerelease Center and Passages Women's Center in Billings*



300 copies of this public document were printed at an estimated cost of \$0.80 per copy, for a total of \$240, which includes \$240 for printing and \$0 for distribution.

Alternative accessible formats of this document will be provided upon request. For further information, call (406) 444-0409 or TTY (406) 444-1421.