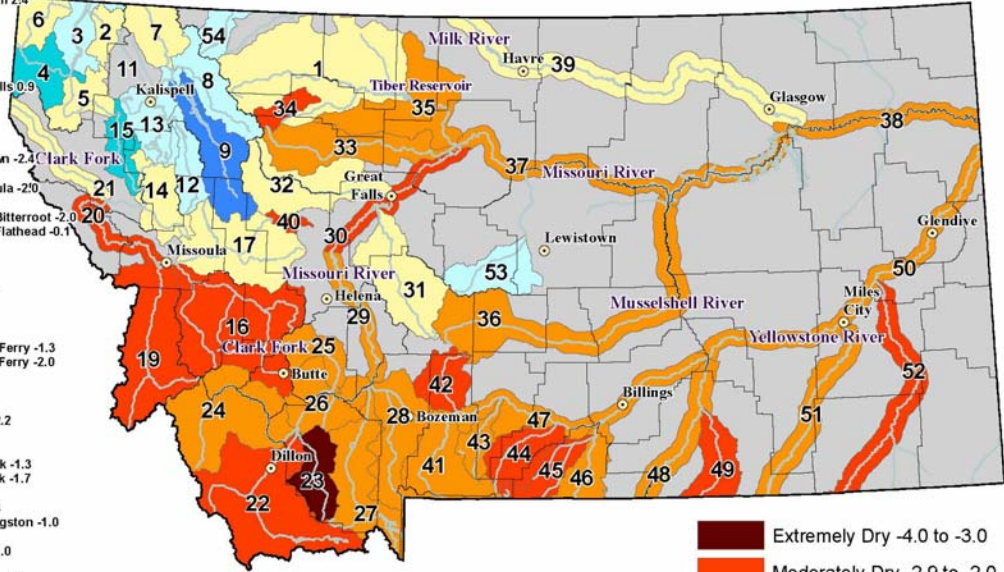


**RIVER INDEX & SWSI VALUES**

- 1 Marias above Tiber Reservoir -0.1
- 2 Tobacco -0.1
- 3 Kootenai Fl. Steele to Libby Dam 1.5
- 4 Kootenai below Libby Dam 2.1
- 5 Fisher -0.4
- 6 Yaak 0.4
- 7 North FK. Flathead 0.7
- 8 Middle FK. Flathead 1.2
- 9 South FK. Flathead 3.2
- 10 Flathead at Columbia Falls 0.9
- 12 Swan 1.1
- 13 Flathead at Polson 1.0
- 14 Mission Valley 0.7
- 15 Little Bitterroot 2.5
- 16 Clark Fork above Milltown -2.4
- 17 Blackfoot -0.2
- 18 Clark Fork above Missoula -2.0
- 19 Bitterroot -2.0
- 20 Clark Fork River below Bitterroot -2.0
- 21 Clark Fork River below Flathead -0.1
- 22 Beaverhead -2.3
- 23 Ruby -3.8
- 24 Big Hole -1.7
- 25 Boulder (Jefferson) -1.8
- 26 Jefferson -1.9
- 27 Madison -1.9
- 28 Gallatin -1.2
- 29 Missouri above Canyon Ferry -1.3
- 30 Missouri below Canyon Ferry -2.0
- 31 Smith -0.7
- 32 Sun -0.1
- 33 Teton -1.8
- 34 Birch/Dupuyer Creeks -2.2
- 35 Marias -1.4
- 36 Musselshell -1.4
- 37 Missouri above Fort Peck -1.3
- 38 Missouri below Fort Peck -1.7
- 39 Milk 0.8
- 40 Dearborn near Craig -2.4
- 41 Yellowstone above Livingston -1.0
- 42 Shields -2.7
- 43 Boulder (Yellowstone) -1.0
- 44 Stillwater -2.2
- 45 Rock/Red Lodge Creeks -2.8
- 46 Clarks Fork Yellowstone -1.2
- 47 Yellowstone above Bighorn River -1.2
- 48 Bighorn below Bighorn Lake -1.2
- 49 Little Bighorn -2.8
- 50 Yellowstone below Bighorn -1.2
- 51 Tongue -1.5
- 52 Powder -2.0
- 53 Upper Judith 1.5
- 54 Saint Mary 1.8

# Surface Water Supply Index (SWSI) Values



June 7, 2013

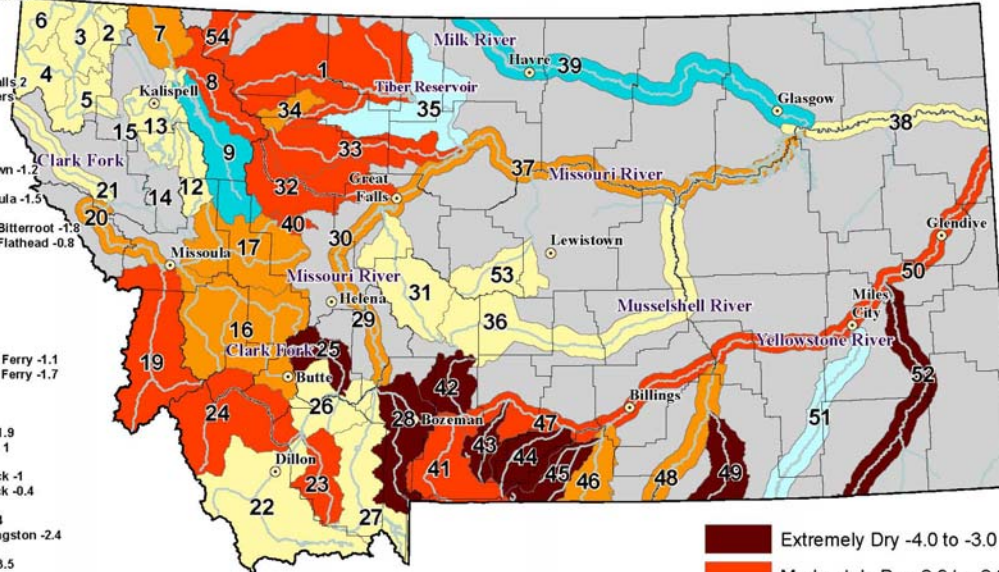
**NOTE: Data used to generate this map are PROVISIONAL and SUBJECT TO CHANGE.**



**RIVER INDEX & SWSI VALUES**

- 1 Marias above Tiber Reservoir -2.5
- 2 Tobacco -0.4
- 3 Kootenai Ft. Steele to Libby Dam -0.9
- 4 Kootenai below Libby Dam 0.7
- 5 Fisher 0.9
- 6 Yaak 0.6
- 7 North FK. Flathead -1.7
- 8 Middle FK. Flathead -2.9
- 9 South FK. Flathead 2.2
- 10 Flathead at Columbia Falls 2
- 11 Stillwater/Whitefish Rivers
- 12 Swan -0.3
- 13 Flathead at Polson -0.2
- 14 Mission Valley
- 15 Little Bitterroot
- 16 Clark Fork above Milltown -1.2
- 17 Blackfoot -1.5
- 18 Clark Fork above Missoula -1.5
- 19 Bitterroot -2.5
- 20 Clark Fork River below Bitterroot -1.8
- 21 Clark Fork River below Flathead -0.8
- 22 Beaverhead -0.6
- 23 Ruby -2
- 24 Big Hole -2.4
- 25 Boulder (Jefferson) -3
- 26 Jefferson -0.3
- 27 Madison -0.7
- 28 Gallatin -3.9
- 29 Missouri above Canyon Ferry -1.1
- 30 Missouri below Canyon Ferry -1.7
- 31 Smith 0.6
- 32 Sun -2.5
- 33 Teton -2.3
- 34 Birch/Dupuyer Creeks -1.9
- 35 Marias below Tiber Res. 1
- 36 Musselshell -0.3
- 37 Missouri above Fort Peck -1
- 38 Missouri below Fort Peck -0.4
- 39 Milk 2.4
- 40 Dearborn near Craig -2.4
- 41 Yellowstone above Livingston -2.4
- 42 Shields -3.9
- 43 Boulder (Yellowstone) -3.5
- 44 Stillwater -3.1
- 45 Rock/Red Lodge Creeks -3.1
- 46 Clarks Fork Yellowstone -1.8
- 47 Yellowstone above Bighorn River -2.5
- 48 Bighorn below Bighorn Lake -1.6
- 49 Little Bighorn -3.6
- 50 Yellowstone below Bighorn -2.1
- 51 Tongue 1.6
- 52 Powder -3.6
- 53 Upper Judith 0.6
- 54 Saint Mary -2.4
- 55 Kootenay at Ft. Steele

# Surface Water Supply Index (SWSI) Values



**October 12, 2012**

**NOTE: Data used to generate this map are PROVISIONAL and SUBJECT TO CHANGE.**

- Extremely Dry -4.0 to -3.0
- Moderately Dry -2.9 to -2.0
- Slightly Dry -1.9 to -1.0
- Near Average -0.9 to 0.9
- Slightly Wet 1.0 to 1.9
- Moderately Wet 2.0 to 2.9
- Extremely Wet 3.0 to 4.0
- SWSI Not Applicable

