

**DNRC REPORT TO EQC
HB22 ADJUDICATION PROGRESS
March, 2014**

Claims Examination Progress

- First benchmark 8,000 claims by 12-31-2006
 - Second benchmark 19,000 claims by 12-31-2008
 - Third benchmark 31,000 claims by 12-31-2010
 - Fourth benchmark 44,000 claims by 12-31-2012

 - Claims examined July 2005 thru January 31, 2014 **56,885**
 - Claims examined by Purpose
 - o Irrigation 13,068 23%
 - o Stock 31,307 55%
 - o Domestic 7,321 13%
 - o Other 5,189 9%
- 56,885**

Claims remaining to be examined**115**

As of the date of the report, 115 claims remained to be examined, but we anticipate to have completed the examination of those claims by the time of the meeting.

Summary Reports to Water Court**Date Issued**

Union Creek (part of 76F)	May 19, 2005
Teton River (41O)	August 15, 2005
Big Hole River (41D)	October 31, 2006
Tongue River, below hanging Woman Creek (42C)	August 7, 2007
Blackfoot River (76F)	August 14, 2007
Missouri River, from Holter Dam to Sun River (41QJ)	August 15, 2007
Tongue River, above Hanging Woman (42B)	December 5, 2007
Pryor Creek (43E)	August 18, 2008
Smith River (41J)	September 1, 2008
Beaver Creek (40M)	September 1, 2008
Flatwillow Creek (40B)	September 11, 2008
Milk River (40J)	December 5, 2008
Little Big Horn River (43O)	February 6, 2009
Big Muddy Creek (40R)	April 6, 2009
Missouri River, Sun River to Marias River (41Q)	June 16, 2009
Beaverhead River (41B)	August 14, 2009
Arrow Creek (41R)	October 23, 2009
Missouri River, from Marias River to Bullwhacker Creek (41T)	November 17, 2009

Milk River above Fresno Reservoir (40F)	April 15, 2011
Rosebud Creek (42A)	December 13, 2012
Red Rock River (41A)	January 10, 2013
Peoples Creek (40I)	February 5, 2013
Shoshone River (43N)	February 12, 2013
Yellowstone River below Powder River (42M)	July 17, 2013
Missouri R between Bullwhacker & Musselshell (40EJ)*	September 25, 2013
St. Mary River (40T)*	January 31, 2014

(* basins not yet decreed)

Decrees Issued by Water Court	Date Issued	Number of Claims
Teton River (41O)	12/29/2005	2,541
Union Creek (part of 76F)	3/10/2006	42
Big Hole River (41D)	4/6/2007	3,892
Missouri River (41QJ)	2/6/2008	2,584
Tongue River (42C)	2/28/2008	4,710
Tongue River (42B)	2/28/2008	1,345
Forest Service Compact	5/19/2008	262
BLM-Montana Compact	3/6/2009	2
Beaver Creek (40M)	3/20/2009	2,942
Big Muddy Creek (40R)	1/28/2010	2,029
Pryor Creek (43E)	2/25/2010	629
Little Big Horn River (43O)	3/17/2010	1,176
Missouri River from Sun River to Marias River (41Q)	5/27/2010	4,127
Milk River between Fresno Res & Whitewater (40J)	6/24/2010	12,897
Smith River (41J)	12/16/2010	2,719
Blackfoot River (76F)	2/10/2011	3,717
Flatwillow Creek (40B)	5/5/2011	3,677
Arrow Creek (41R)	6/23/2011	2,179
National Bison Range Compact	9/30/2011	97
Missouri River, from Marias River to Bullwhacker Creek (41T)	4/19/2012	3,073
Crow Tribe of Indians Montana Compact	1/28/2013	NA
Beaverhead River (41B)	5/9/2013	2,238
Red Rock River (41A)	5/9/2013	2,861
Rosebud Creek (42A)	5/23/2013	1,220
Shoshone River (43N)	6/13/2013	165
Peoples Creek (40I)	6/20/2013	686
Milk River above Fresno Reservoir (40F)	12/12/2013	2,339
Yellowstone River below Powder River (42M)	1/24/2014	5,290

Above decrees scanned and available at:

http://www.dnrc.mt.gov/wrd/water_rts/adjudication/default.asp

BASINS BY COMPLETION DATE - DNRC WORK PLAN FY 2014				
BASIN COUNT	BASIN NAME	WORK STATUS	Estimated Completion Date	
1	Flathead R below Flathead Lake (76L)	Summary Report pending	1	2015
2	Big Horn R below Greybull R (43P)	Summary Report pending	10	2014
3	Flathead River (76LJ)	Examination in progress	4	2014
4	Cut Bank River (41L)	Summary Report pending	12	2014
5	Two Medicine River (41M)	Summary Report pending	8	2014
6	Marias River (41P)	Summary report Pending	7	2014
7	Bitterroot R, E side (76HA)	Examination in progress	4	2014
8	Frenchman Creek Re-Examination (40L)	Summary Report pending	7	2015

Assistance for District Court Enforcement of Water Court Decrees

2005 season completed water court assistance for 23 streams
2006 season completed water court assistance for 23 streams
2007 season completed water court assistance for 26 streams
2008 season completed water court assistance for 32 streams
2009 season completed water court assistance for 36 streams
2010 season completed water court assistance for 38 streams
2011 season completed water court assistance for 38 streams
2012 season completed water court assistance for 40 streams
2013 season completed water court assistance for 42 streams

Post Decree Assistance (July- FY2014)

<u>case type</u>	<u>case count</u>	<u>work hours</u>
Certified case		0
Case with Objector	32	952
85-2-248 case	110	2,244
General assist		667
Total hours		3,863

Post Decree assistance primarily involves working with claimants and the Water Court to help resolve issue remarks on water rights. This assistance is generated through the on motion process (85-2-248) and objections by water users resulting in a case. Assistance includes meeting with claimants, conducting field investigations, mapping, and providing recommendations and technical reports pertaining to individual cases. In addition, assistance is requested by the Water Court to help with certified cases before and after the initial decree phase. Unique requests to help the Water Court resolve specific cases such as large basin mapping projects, and other technical requests fall within the general assistance category.

HB39 Automate Ownership updates (effective July 1, 2008)

- Department staff continue to validate water right geocodes for property transfers that occurred from November 2010 thru January 2012.
- In 2010, 3,821 ownerships were updated involving 9,460 water rights
- In 2011, 6,245 ownerships were updated involving 15,765 water rights.
- In 2012 8,729 ownerships were updated involving 20,496 water rights.
- In 2013 8,208 ownerships were updated involving 19,305 water rights.
- So far this fiscal year 4,988 ownerships have been updated involving 11,482 water rights.**

SB355 Fillings (effective Oct 1, 2013)

The department has received 73 statement of claims to date. 10 of these have the purpose of domestic and 63 have the purpose of stock. Examination is occurring on basins nearing initial decree and basins with notice deadlines.

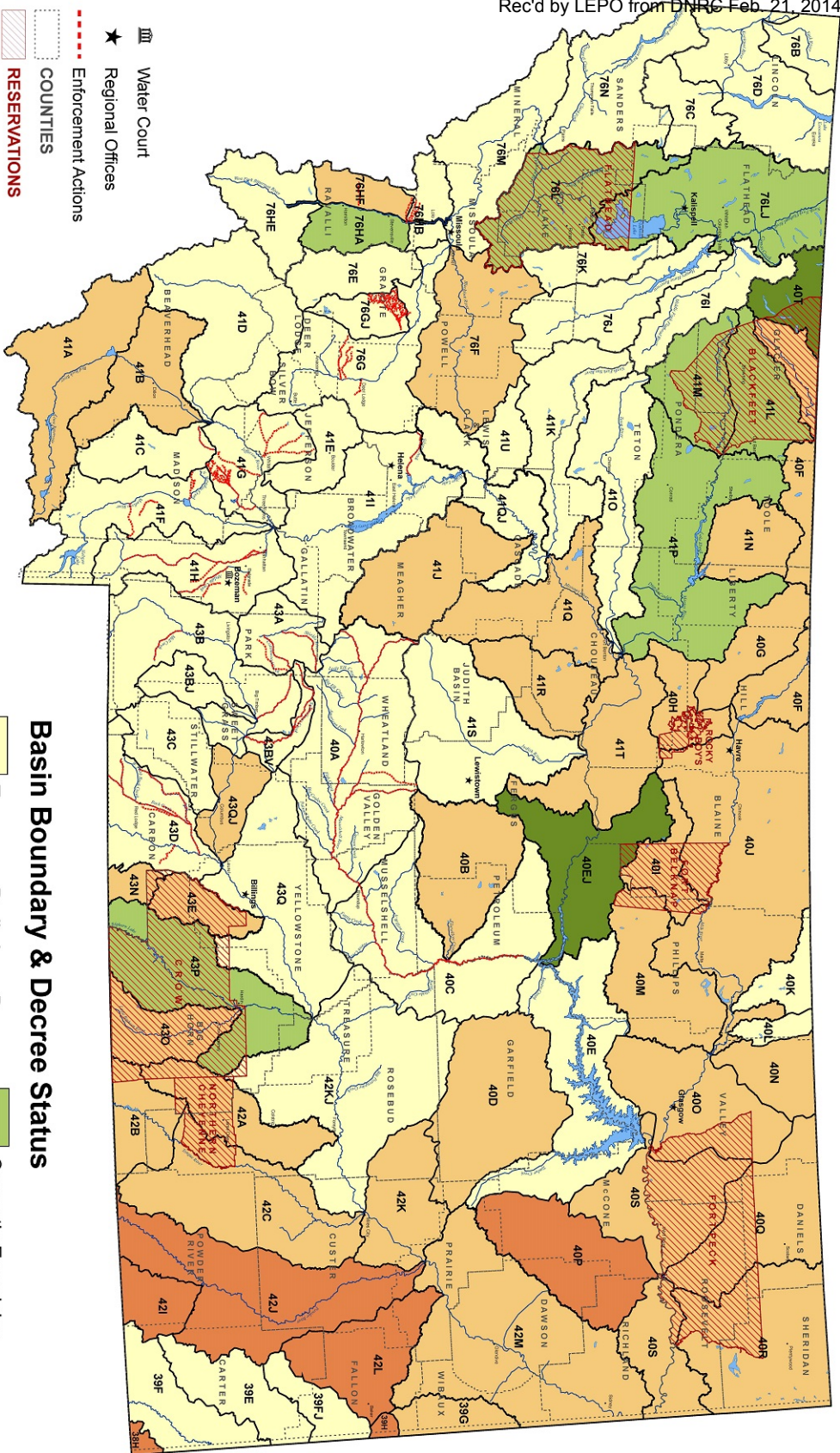
Re-examination order on verified and early examined basins

The department has not started working on the 43 basins with approximately 90,000 claims affected by this order. The work involved primarily addresses water distribution issues and is not a full examination of the claims. Work in these basins is anticipated to be complete by July 1st of 2021.

Basin Location and Adjudication Status

2/10/2014

Rec'd by LEPO from DNRC Feb. 21, 2014



Basin Boundary & Decree Status

- Temporary Preliminary Decree
- Preliminary Decree
- Final Decree
- Currently Examining
- Summary Report Issued