

MONTANA JUDICIAL BRANCH

Youth Court At-A-Glance

January 2017 through December 2017



MONTANA SUPREME COURT
Office of the Court Administrator
301 South Park Ave., STE 328
Helena, Montana 59620
(406) 841-2950

JUVENILE JUSTICE OVERVIEW

Juveniles usually enter the juvenile justice system through contact with law enforcement, although they may be referred to juvenile probation by other agencies and parents. Juvenile probation is an integral part of the Youth Court and is overseen by the Youth Court judge within each of the 22 Judicial Districts. Most referrals to the Youth Court's juvenile probation office are in the form of a ticket accompanied by a report from law enforcement. Juvenile probation officers may handle any referral except traffic and fish and game violations, which fall under the jurisdiction of the Justice, Municipal, City, and District Courts.

Youth referred to probation must appear in front of the juvenile probation officer with a parent or guardian to answer to the allegations against them. Most youth will never see the Youth Court judge and will work solely through the Youth Court juvenile probation officer to resolve the ticket in what is referred to as the informal process. If the referral is forwarded to the county attorney and a petition is filed on the alleged charges, the youth will appear before the Youth Court judge in what is referred to as the formal process. Approximately 10% of the youth referred to juvenile probation each year are handled formally.

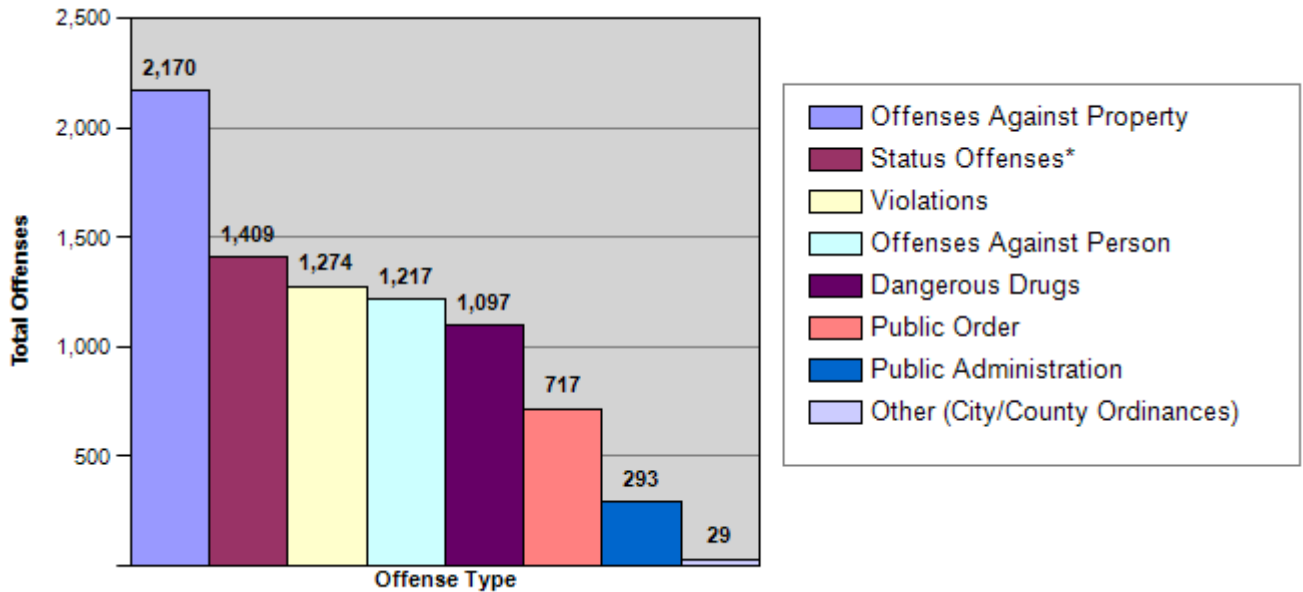


Juvenile Justice

REFERRALS TO MONTANA'S YOUTH COURTS

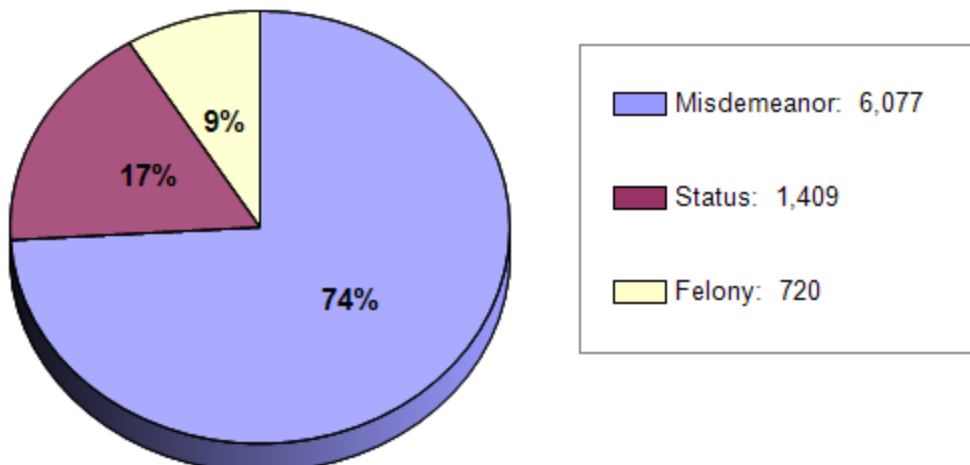
Youth Referred to Youth Court	3,660
Referrals (a youth may have multiple referrals)	5,469
Offenses (a referral may have multiple offenses)	8,206

OFFENSE CATEGORIES

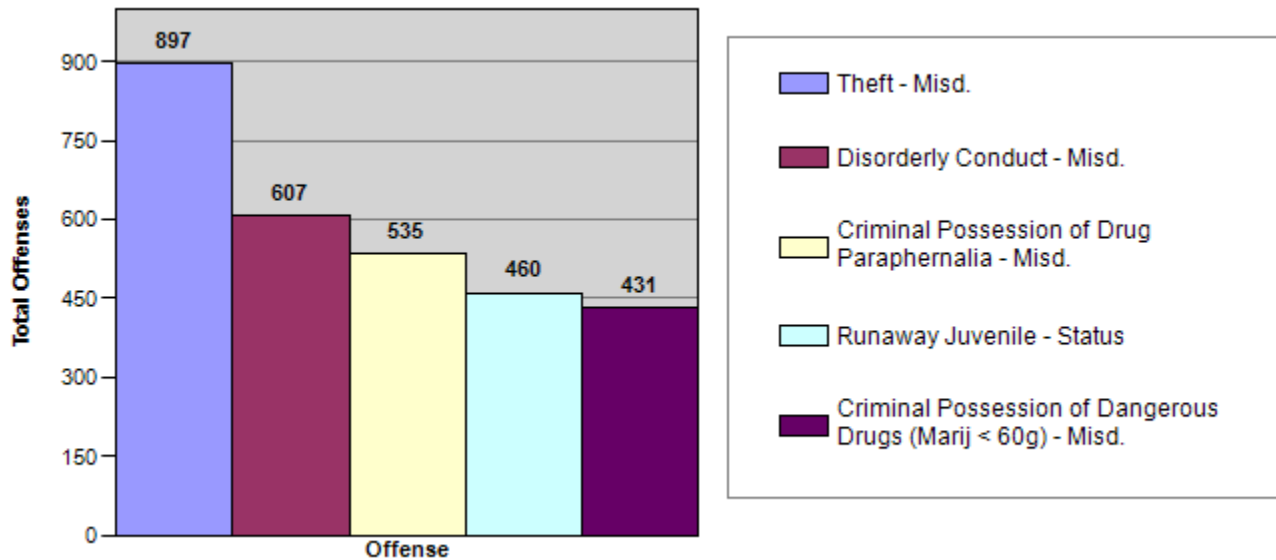


*These are matters that are offenses because of the youth's age and include such things as a minor in possession of alcohol, truancy, curfew or a run-away violation.

OFFENSE CLASSIFICATIONS

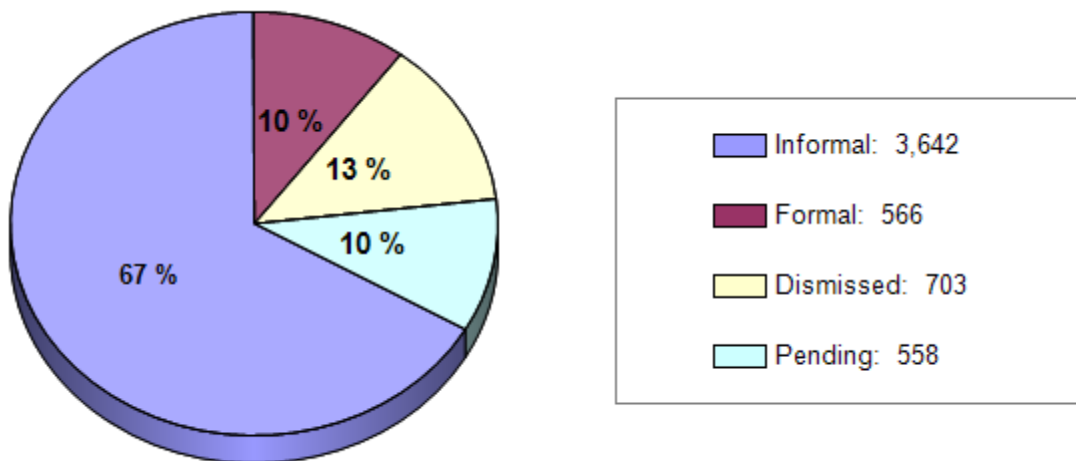


FIVE MOST FREQUENT OFFENSES ASSOCIATED WITH REFERRALS TO JUVENILE PROBATION



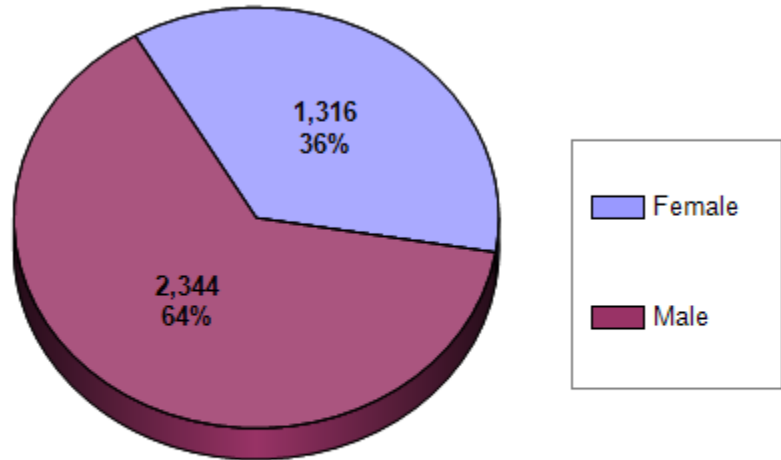
TYPE OF DISPOSITION USED

Informal: Referral handled by juvenile probation officer
Formal: Referral in which youth appears before Youth Court judge
Dismissed: Referral in which case is dismissed by juvenile probation officer or county attorney
Pending: Referral awaiting action from the county attorney's office, requires further investigation by law enforcement, or a ticket has been issued and juvenile probation is waiting to see the youth and parent(s).

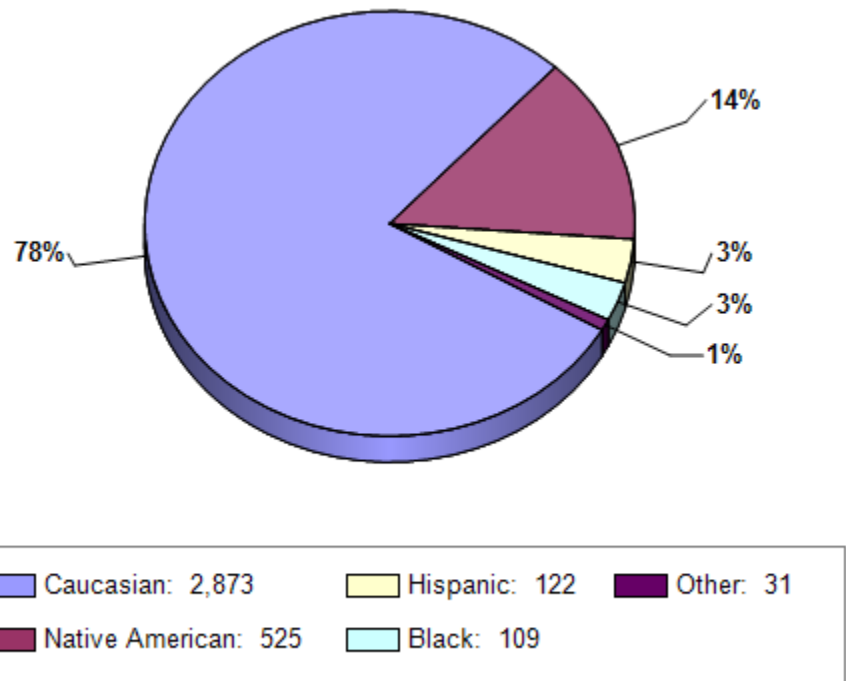


YOUTH DEMOGRAPHICS

GENDER



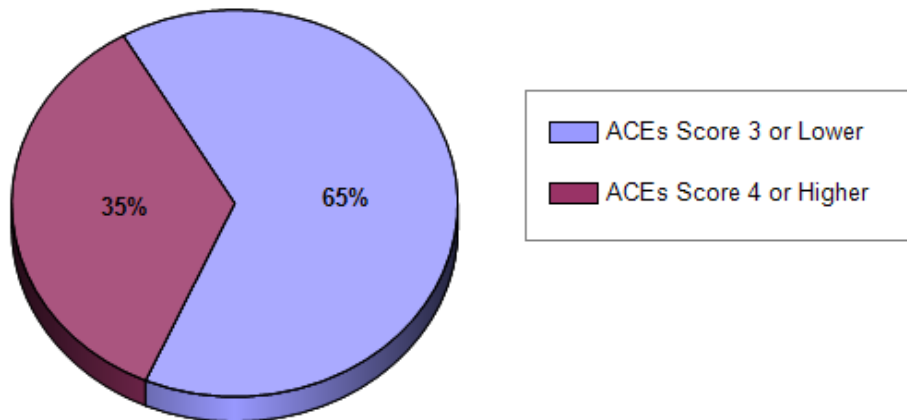
RACE



* Total of percentages may be slightly off due to rounding.

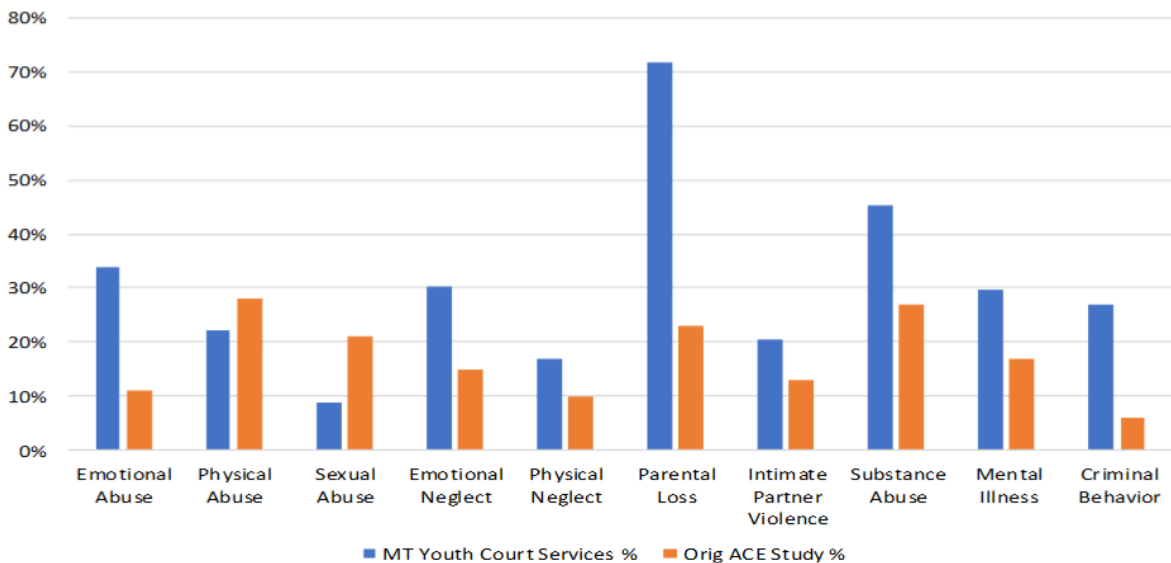
ACEs AND MONTANA'S YOUTH COURTS

The CDC's Adverse Childhood Experiences Study (ACEs) uncovered a significant link between childhood trauma and the chronic diseases people develop as adults, as well as social and emotional problems. In July, 2016 the Montana Youth Court Services Division introduced the ACEs tool into our assessments to assist in identifying additional risk factors in the population we serve. A high ACEs score (4 or more) has been proven to increase the likelihood of failing grades, drug and alcohol use and mental health problems. For those circumstances in which a youth receives an ACEs score of 4 or more, the supervising probation officer is directed to use a trauma-informed approach in their case-planning.



COMPARING YOUTH COURTS ACEs SCORES

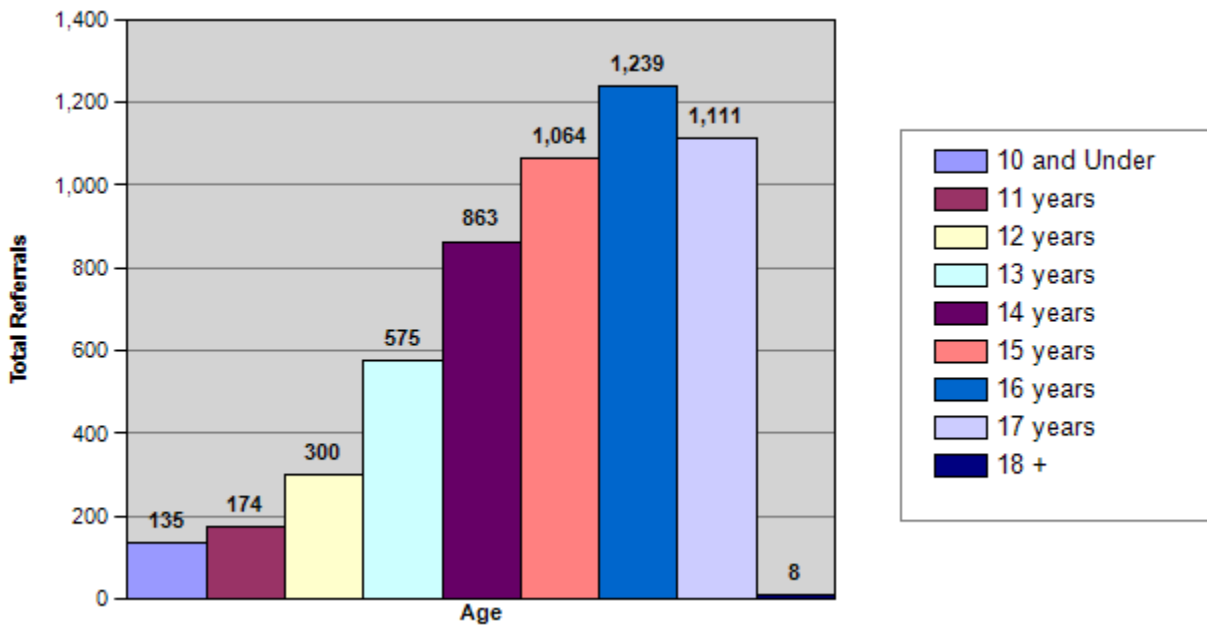
The Office of Court Administration Youth Court Services Division has partnered with the ChildWise Institute to further analyze ACEs characteristics in the population we serve. The graph below is a representation of how youth in MT Youth Court Services compare to the original ACEs study in the ten risk factors identified by the ACEs tool.



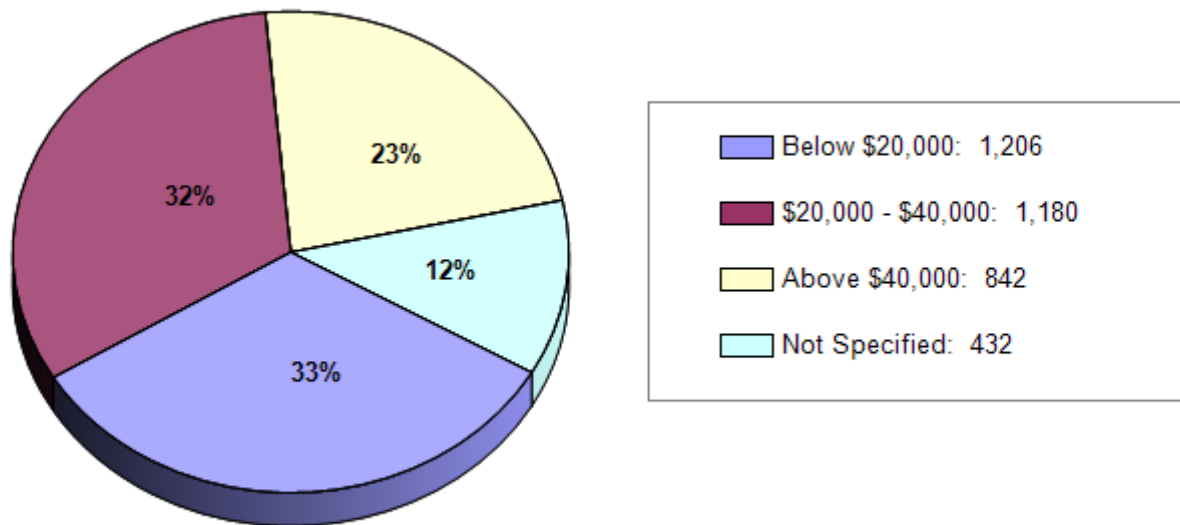
The above information is from 3,501 complete assessments collected from 6/29/16 - 2/16/18.

* Additional analysis of this data is being conducted by the ChildWise Institute and will be made available once completed to the Montana Office of Court Administrator.

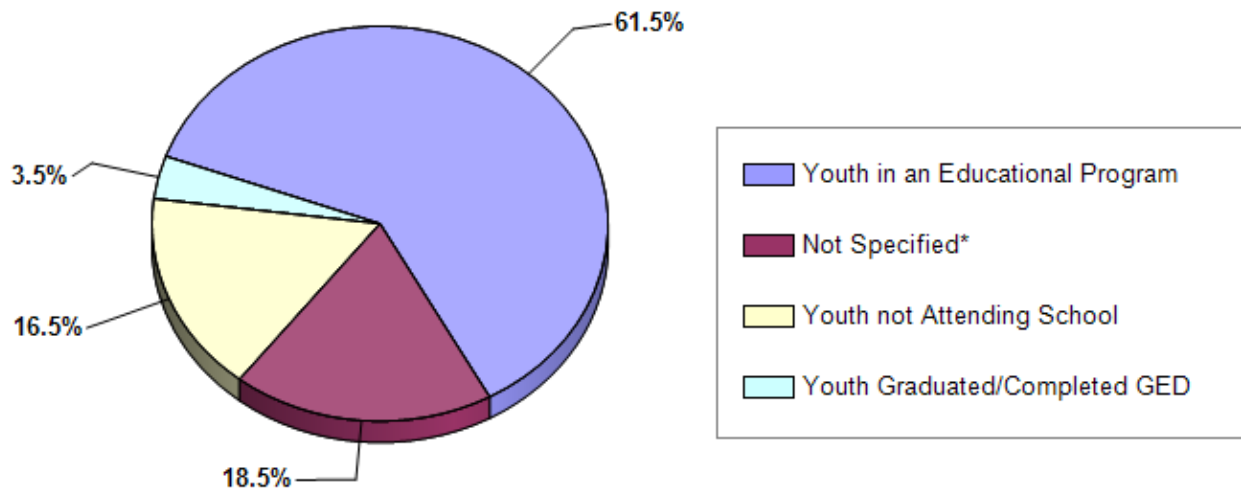
AGE AT TIME OF OFFENSE



FAMILY'S HOUSEHOLD INCOME



SCHOOL PARTICIPATION



** These are likely youth who are in an educational program but did not provide enough information at the time of intake. The Youth Court Services division will be making adjustments to the reporting tool which should allow for a more accurate representation on the next report.*

RESTORING JUSTICE TO VICTIMS AND HOLDING OFFENDERS ACCOUNTABLE

LENGTH OF DISPOSITION

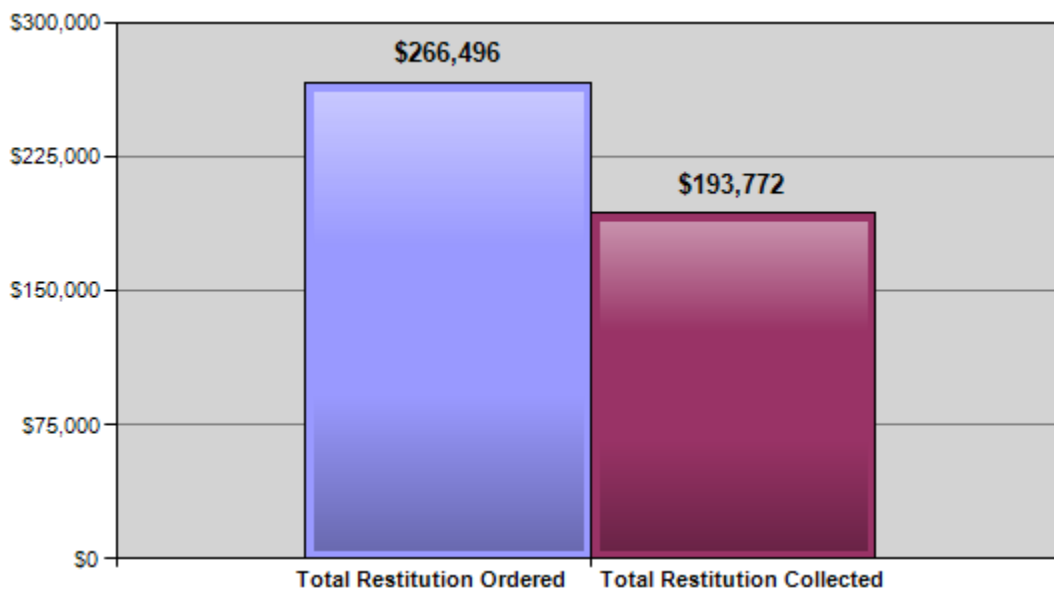
Every referral has a disposition, which is the equivalent to an adult sentence handed down by a Judge.

0-30 days:	1,516
31-90 days:	922
+90 days:	2,473

** Includes all dispositions except Pending because those referrals don't yet have a disposition end date.*

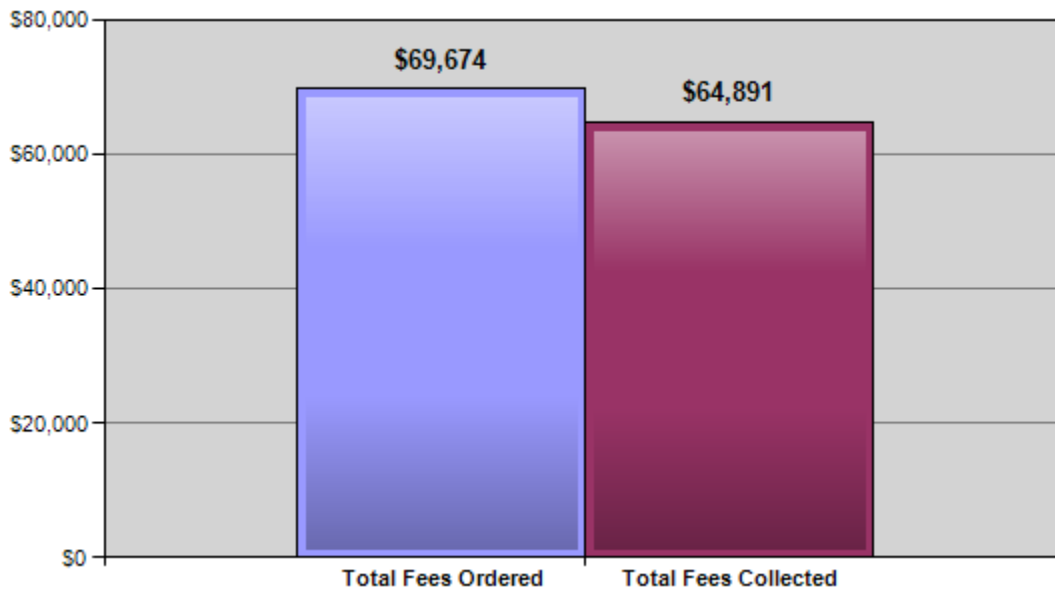
RESTITUTION

Number of Youth Ordered to Pay Restitution: 375



FEES

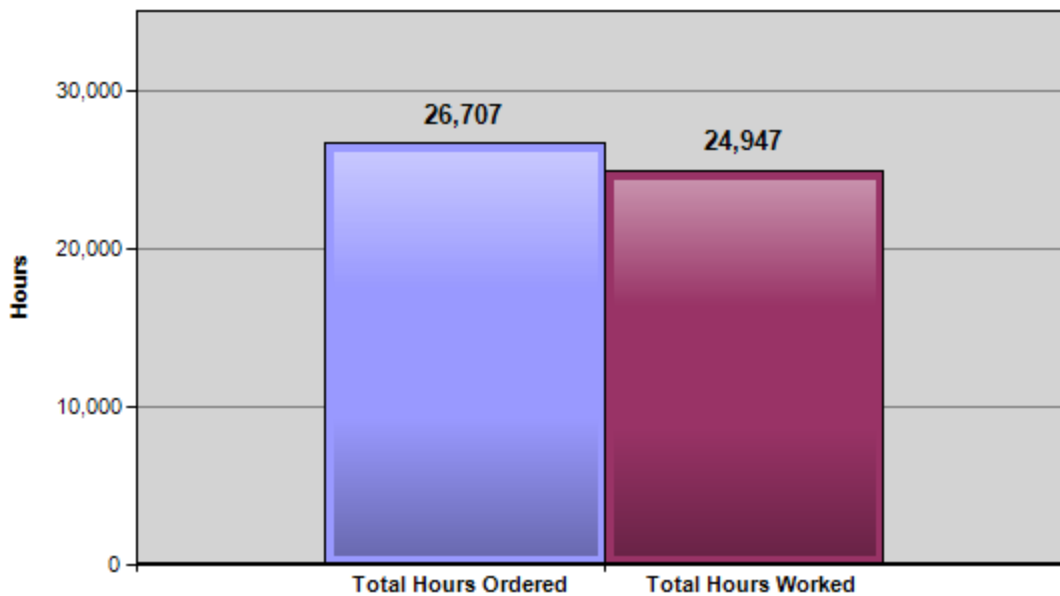
Number of Youth Ordered to Pay Fees: 1,247



** Fees used to offset cost of drug testing, workers' compensation, and other services*

COMMUNITY SERVICE HOURS

Number of Youth Ordered to Complete Community Service: 1,194



COMMUNITY SERVICE SWEAT EQUITY HOURS

Many youth are unable to contribute towards their restitution obligation because they have no family support, are not old enough to get a job, or lack the necessary social skills to get and keep a job. The Community Service Sweat Equity program is offered to youth as an opportunity, by utilizing community service, to earn restitution money to repay their victims.

Total Number of Youth that Worked Sweat Equity Hours:	149
Total Sweat Equity Hours Worked:	5,072.67
Total Money Earned to Pay to Victims:	\$41,343.20

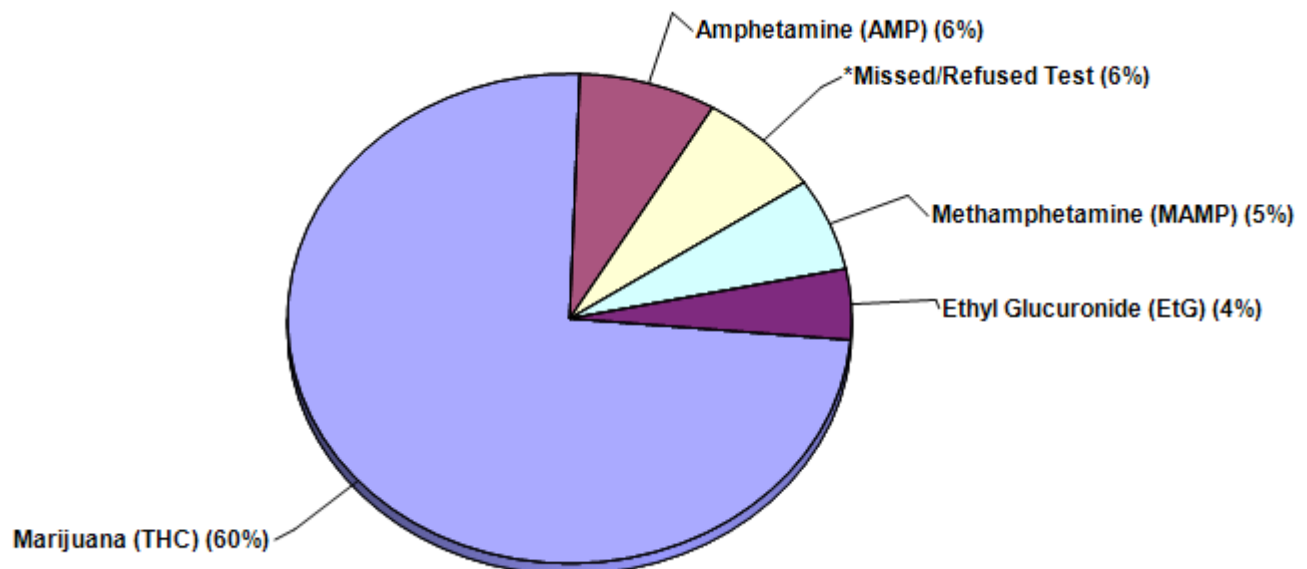
RESISTANCE TO DRUGS

Offenders ordered to submit to drug testing are tested randomly, unless there is suspicion to believe the youth has recently been using. Youth in a drug treatment court may be required to test more often as required by the judge.

Total Number of Youth Drug Tested:	933
Total Number of Tests Administered:	5,128
Total Number of Youth Testing Positive:	545

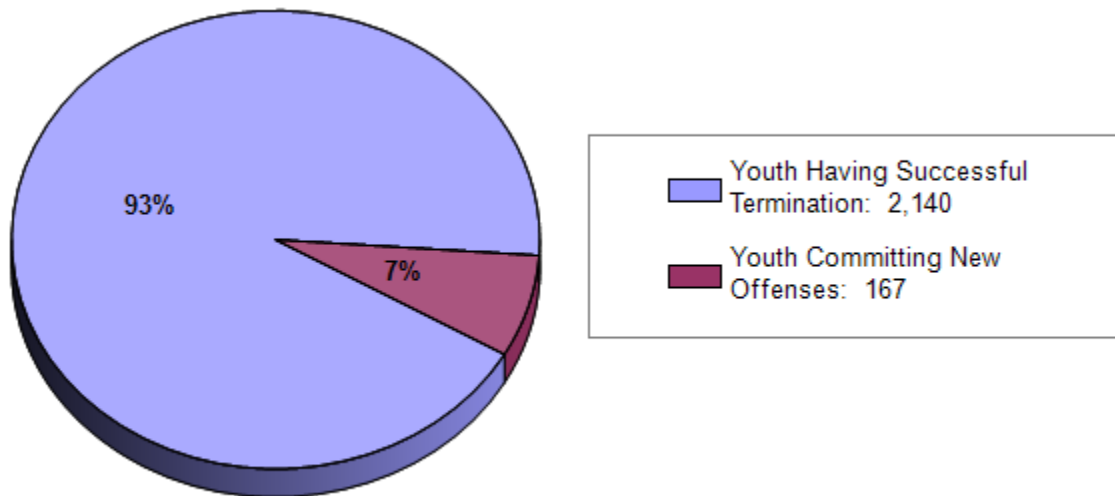
** A single youth may have tested positive multiple times*

TOP FIVE DRUGS USED



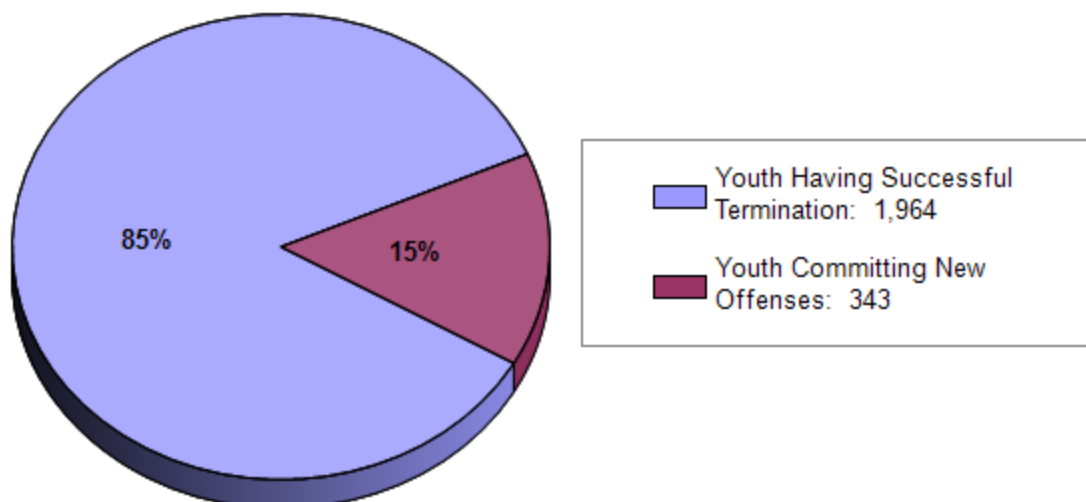
RECIDIVISM WHILE UNDER SUPERVISION (UNDUPLICATED YOUTH NEW TO THE SYSTEM)

Recidivism on unduplicated youth that had their initial Intake in 2017 and committed a new offense prior to the disposition end date.



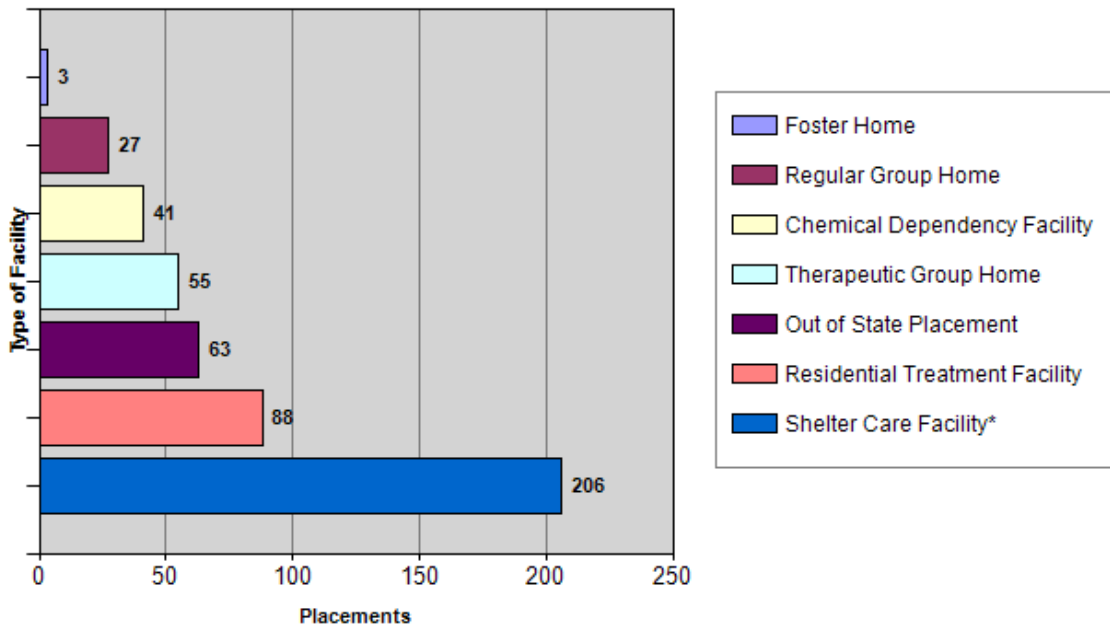
RECIDIVISM WITHIN 1 YR AFTER CASE COMPLETION (UNDUPLICATED YOUTH NEW TO THE SYSTEM)

Recidivism on unduplicated youth that had their initial Intake in 2017 and committed a new offense within 1 year of the original disposition end date.



OUT-OF-HOME PLACEMENTS

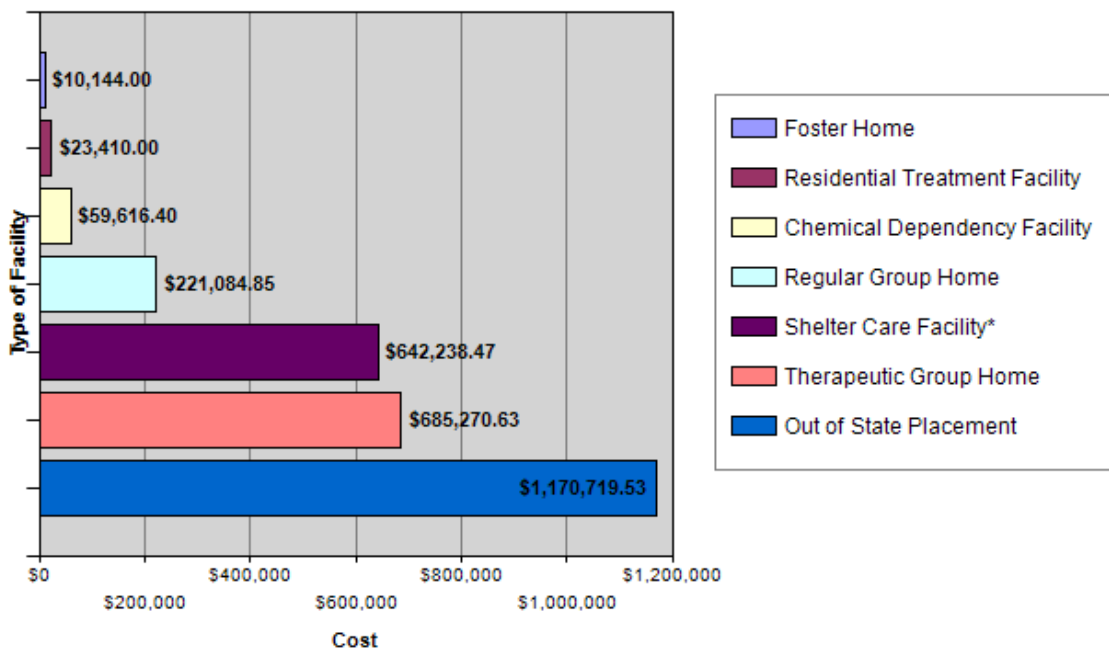
Out of 5,469 referrals to Youth Court, 483 resulted in out-of-home placements for this reporting year. Please note that a single youth may be placed multiple times.



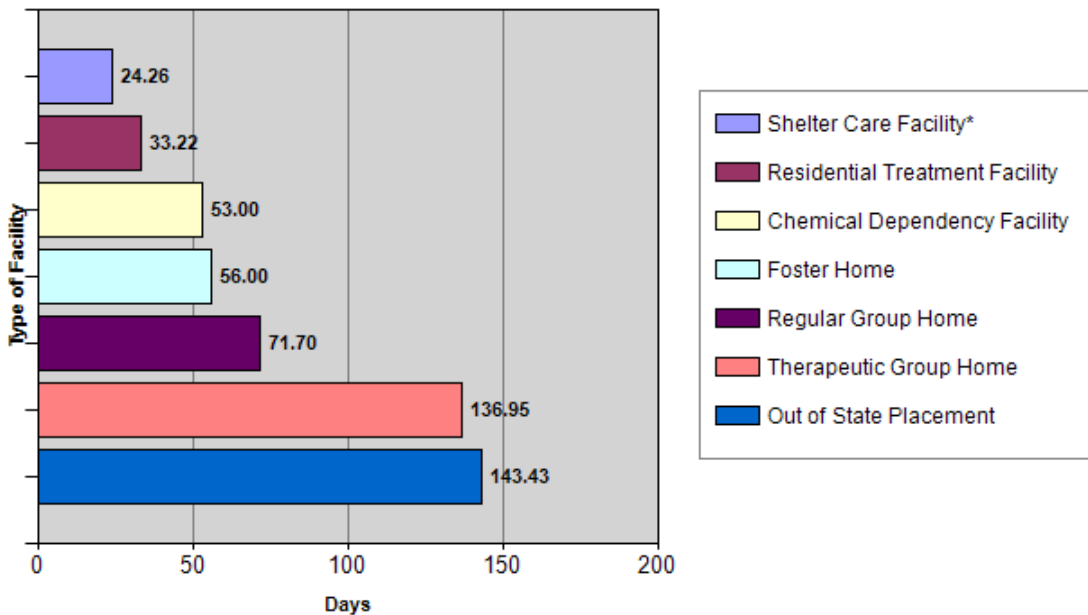
* Shelter care, the most common placement, is a very short-term placement used when Youth Court is assessing the youth and family's situation.

OUT-OF-HOME PLACEMENTS - COST

These are the general fund costs incurred by the Youth Courts of Montana and do not include additional funding sources and cost-shares that may have been made by collaborating agencies (Medicaid, DPHHS, CMHB).



OUT OF HOME PLACEMENTS – AVG LENGTH OF STAY



DETENTION

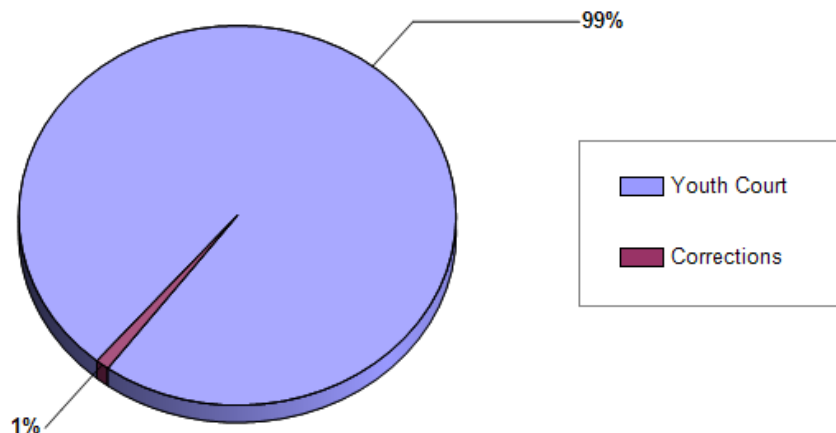
Number of Youth Placed in Detention at Time of Arrest: 683

Youth detention facilities, which are physically restricting youth facilities designed to prevent a youth from departing at will are mostly funded and operated by counties. Local law enforcement officers make the decision to detain at the time of arrest. (Youth may be placed in detention on more than once.)

DEPARTMENT OF CORRECTIONS COMMITMENTS

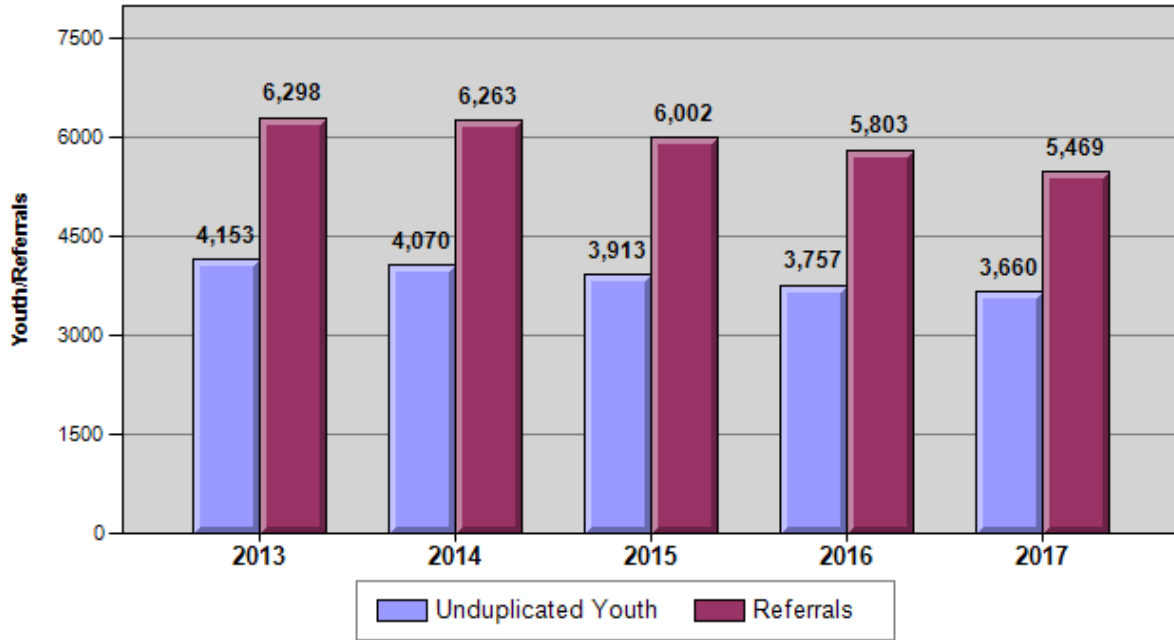
Only a Youth Court judge may sentence a youth to the Department of Corrections. Approximately 1% of all youth referred to juvenile probation are sentenced to the Department of Corrections.

Of the 3,660 youth referred to Youth Court, 37 were committed to the Department of Corrections for placement in a youth correctional facility.



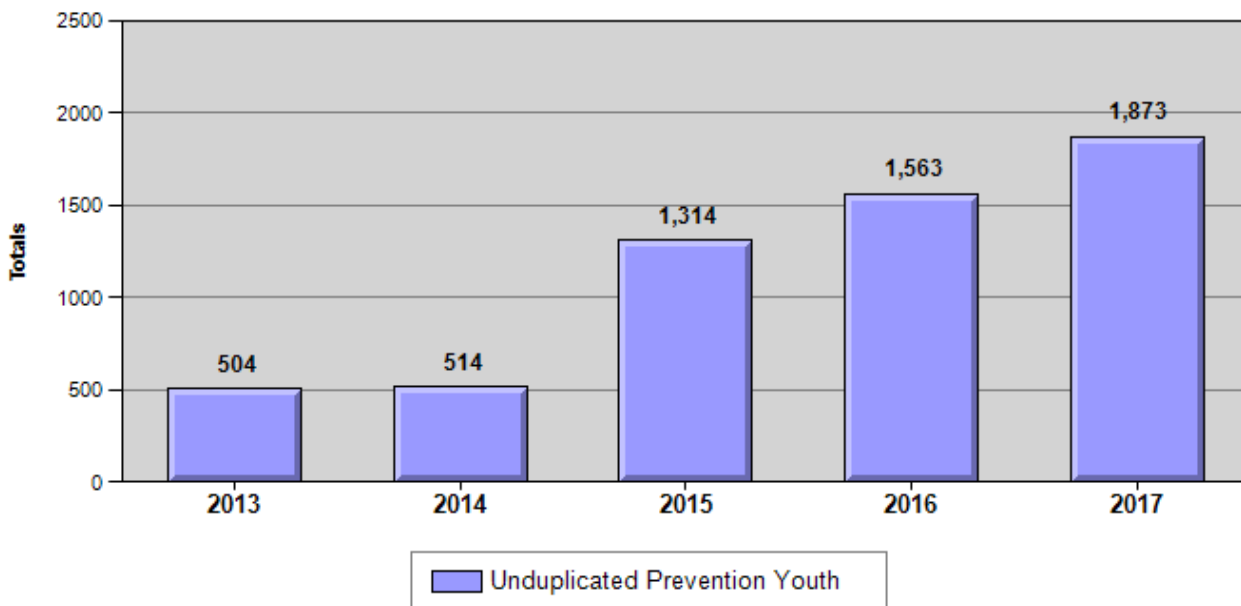
5 YEAR TRENDS

UNDUPLICATED YOUTH AND REFERRALS

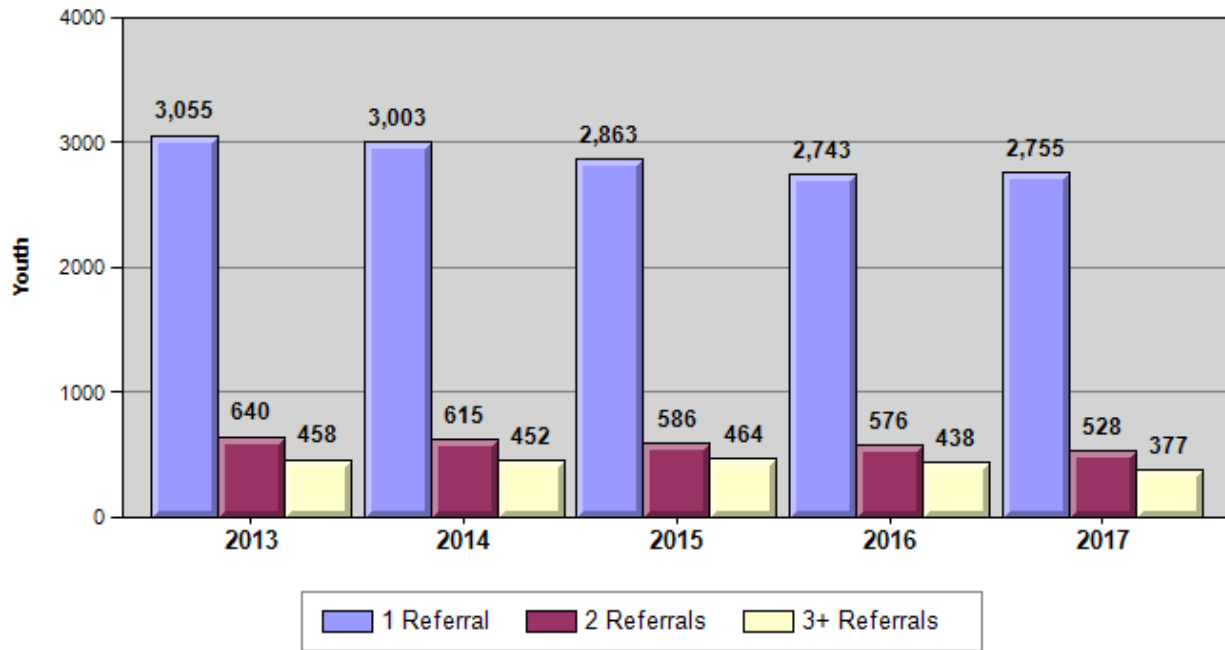


UNDUPLICATED PREVENTION YOUTH

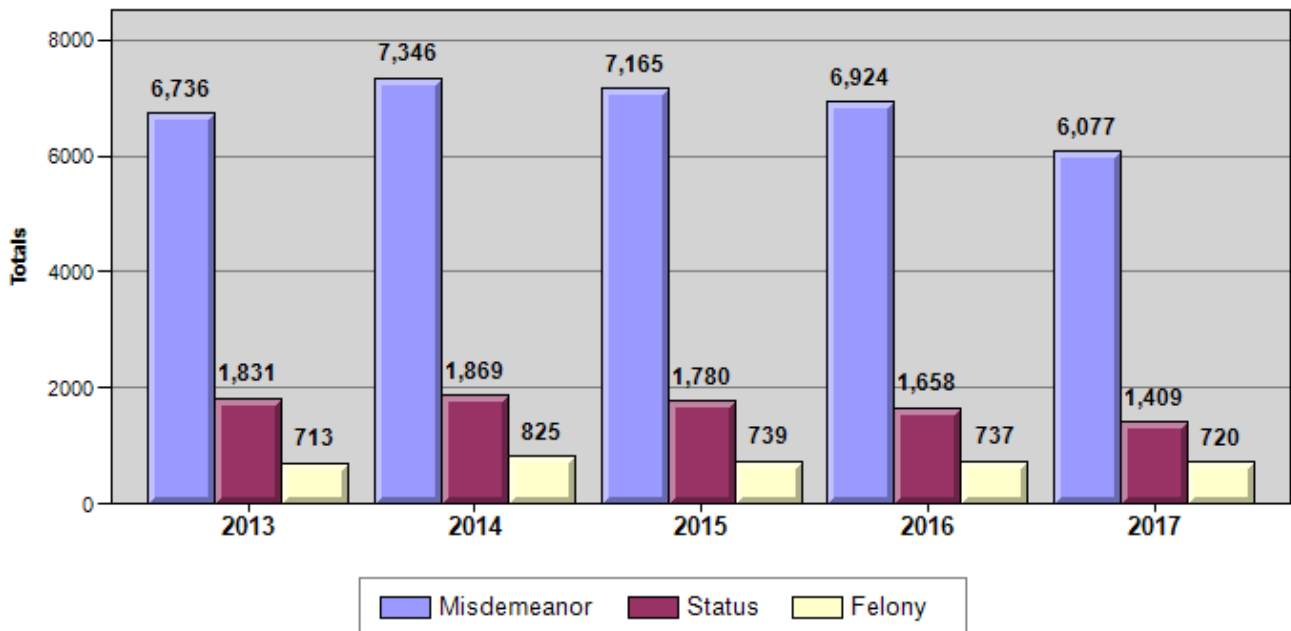
Through the State of Montana *Juvenile Delinquency Intervention Program (JDIP)*, judicial districts are provided the opportunity to develop prevention programs in which both youth referred to youth court services, as well as at-risk youth who have not come into contact with probation, can access services that promote positive growth and development. This graph identifies those prevention youth



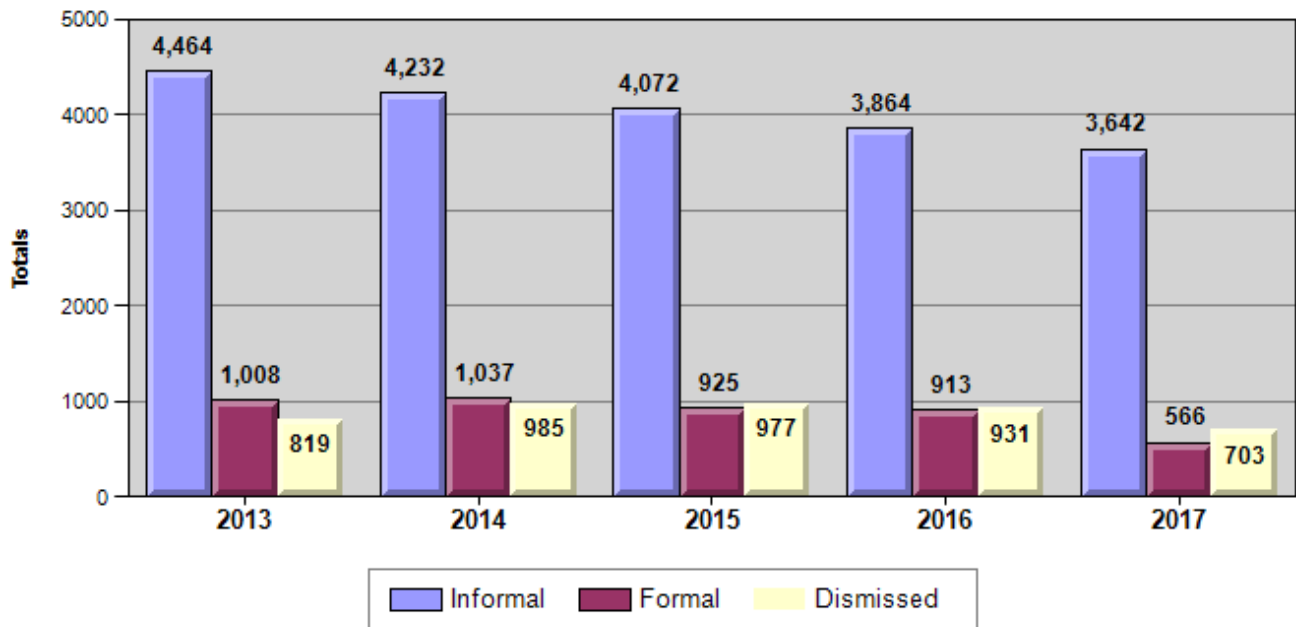
NUMBER OF REFERRALS PER YOUTH



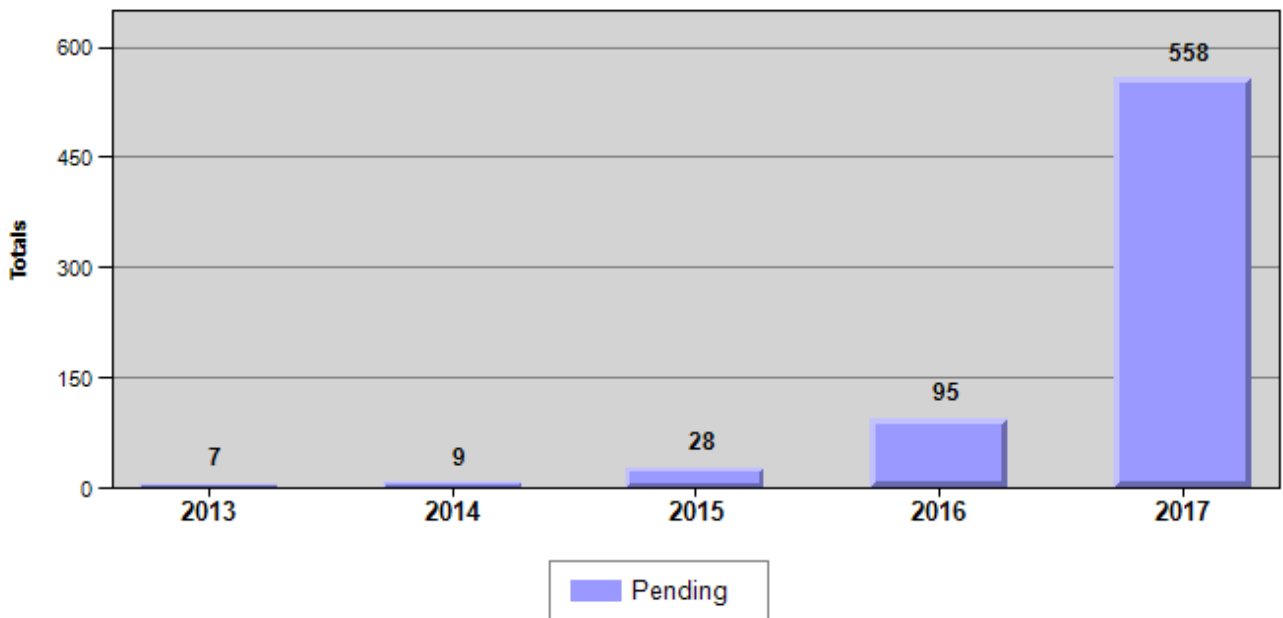
OFFENSE CLASSIFICATIONS



TYPE OF DISPOSITION USED



REFERRALS PENDING DISPOSITION



* These are referrals that are awaiting action from the county attorney's office, requires further investigation by law enforcement, or a ticket has been issued and juvenile probation is waiting to see the youth and parent(s).

YOUTH COURT CONTACTS BY JUDICIAL DISTRICT

DISTRICT #1

Lewis and Clark, Broadwater

District Court Judges: Mike Menahan, McMahon, Kathy Seeley, James Reynolds

Chief Juvenile Probation Officer:
Sharon Tregidga / Contact Number: 447-8228

DISTRICT #2

Silver Bow

District Court Judges: Kurt Krueger, Brad Newman

Chief Juvenile Probation Officer:
Jennifer Briggs / Contact Number: 497-6375

DISTRICT #3

Deer Lodge, Powell, Granite

District Court Judge: Ray Dayton

Chief Juvenile Probation Officer:
Marylyn Shovlin / Contact Number: 563-4031

DISTRICT #4

Missoula, Mineral

District Court Judges: Leslie Halligan, Dusty Deschamps, John Larson, Karen Townsend

Chief Juvenile Probation Officer:
Glen Welch / Contact Number: 258-4735

DISTRICT #5

Beaverhead, Jefferson, Madison

District Court Judge: Luke Berger

Chief Juvenile Probation Officer:
Sam Stockett / Contact Number: 683-3760

DISTRICT #6

Park, Sweet Grass

District Court Judge: Brenda Gilbert

Chief Juvenile Probation Officer:
Lesla Maher / Contact Number: 222-4162

DISTRICT #7

Dawson, Richland, McCone, Wibaux, Prairie

District Court Judges: Katherine Bidegaray, Olivia Rieger

Chief Juvenile Probation Officer:
Kale Rasmussen / Contact Number: 377-4675

DISTRICT #8

Cascade

District Court Judges: Greg Pinski, Elizabeth Best, John Kutzman, John Parker

Chief Juvenile Probation Officer:
Tim Callahan / Contact Number: 454-6880

DISTRICT #9

Glacier, Pondera, Teton, Toole

District Court Judge: Robert "Bob" Olson

Chief Juvenile Probation Officer:
Tasha Stiner / Contact Number: 873-3620

DISTRICT #10

Fergus, Judith Basin, Petroleum

District Court Judge: Jon Oldenburg

Chief Juvenile Probation Officer:
Laura Singley / Contact Number: 538-9242

DISTRICT #11

Flathead

District Court Judges: Robert Allison, Amy Eddy, Heidi Ulbricht, Dan Wilson

Chief Juvenile Probation Officer:
Nick Nyman / Contact Number: 758-5547

DISTRICT #12

Hill, Chouteau, Liberty

District Court Judge: Daniel Boucher

Chief Juvenile Probation Officer:
Kevin Buerkle / Contact Number: 265-5481

DISTRICT #13

Yellowstone

District Court Judges: Ingrid Gustafson, Donald Harris, Michael Moses, Gregory Todd, Rod Souza, Mary Jane Knisely

Chief Juvenile Probation Officer:

Tara French / Contact Number: 256-2843

DISTRICT #14

Golden Valley, Meagher, Musselshell, Wheatland

District Court Judge: Randal Spaulding

Chief Juvenile Probation Officer:

Vacant / Contact Number: 323-1714

DISTRICT #15

Roosevelt, Sheridan, Daniels

District Court Judge: David Cybulski

Chief Juvenile Probation Officer:

Ron Kemp / Contact Number: 653-6263

DISTRICT #16

Carter, Custer, Fallon, Garfield, Powder River, Rosebud, Treasure

District Court Judges: Nickolas Murnion, Michael Hayworth

Chief Juvenile Probation Officer:

Matt Phillips / Contact Number: 874-3418

DISTRICT #17

Blaine, Phillips, Valley

District Court Judge: Yvonne Laird

Chief Juvenile Probation Officer:

Vacant / Contact Number: 654-2087

DISTRICT #18

Gallatin

District Court Judges: Holly Brown, Rienne Hartman McElyea, John Brown

Chief Juvenile Probation Officer:

Vacant / Contact Number: 582-2180

DISTRICT #19

Lincoln

District Court Judge: Matthew Cuffe

Chief Juvenile Probation Officer:

Kindra Hageness / Contact Number: 293-9715

DISTRICT #20

Lake, Sanders

District Court Judges: Jim Manley, Deborah Kim Christopher

Chief Juvenile Probation Officer:

Barb Monaco / Contact Number: 883-7264

DISTRICT #21

Ravalli

District Court Judges: Jeffrey Langton, James Haynes

Chief Juvenile Probation Officer:

Clint Arneson / Contact Number: 375-6805

DISTRICT #22

Big Horn, Carbon, Stillwater

District Court Judge: Blair Jones

Chief Juvenile Probation Officer:

Lindsey Fox / Contact Number: 322-8046