



CWD MANAGEMENT

December 3, 2019

The season is done! Hurray!

Thank you, everyone, for your patience and your persistence in contributing to our CWD sampling efforts! We collected 1198 samples last week (11/20 – 11/26/2019) for a season total of 5353 samples since 04/01/2019. These numbers do not include the closing weekend. Sampling locations and CWD suspects/positives to date are illustrated on the maps below. Existing or pending results are publicly available online (fwp.mt.gov/cwd).

Below is a brief update on where we are with respect to our sampling goals, including maps and figures. We have also included a list of general reminders for those involved in sampling efforts. We will send one more update like this one next week, summarizing the results through the end of the general hunting season. **These results are considered preliminary.**

Samantha Treece (368), John Randolph (362), Julie Herrick (325), Glen Doubek (323), Chrissy Webb (323), and Robbie Seykora (272) have collected the most samples this season! Thank you so much!

Thanks again, everyone. If anyone needs anything CWD-related, please contact John Thornburg (john.thornburg@mt.gov) or myself (ealMBERG@mt.gov).

General Reminders:

- **With the new detections in Region 7, we anticipate an increased number of questions and concerns from hunters that harvested animals earlier in the season in the vicinity of the new positives.** Unless a hunter has saved a head from their earlier harvest that still has lymph nodes or obex, we cannot test their animal. Currently, hunters cannot legally dispose of meat without a positive CWD test.
- **Please remember to change blades between animals and clean off cutting boards regularly.**
- **Please fold down whirl paks three times (no more/no less) before folding the ends inward.** This allows the lab to see the barcode label.
- **When removing scalpel blades, please use the orange blade removers.**
- **Please make sure all information is filled out on the cards at the time of data collection.**
- **Only send retropharyngeal lymph nodes or obex to CSU for testing.** They cannot reliably test parotid or submandibular lymph nodes.
- **Keep your eye out for enlarged and puss-filled/abscessed lymph nodes.** Please consult the 'Sick Animal Flowchart' for what to do with these samples or samples from other sick animals.
- **Samples from symptomatic animals are still a state-wide priority.**
- **Please freeze the cryovials with genetic samples and desiccant.**
- **Please record "Hunter submitted – [Location]" for any sample that a hunter has collected themselves, even if they drop it off at a regional office or check station.** For example, "Hunter submitted – R3 HQ".



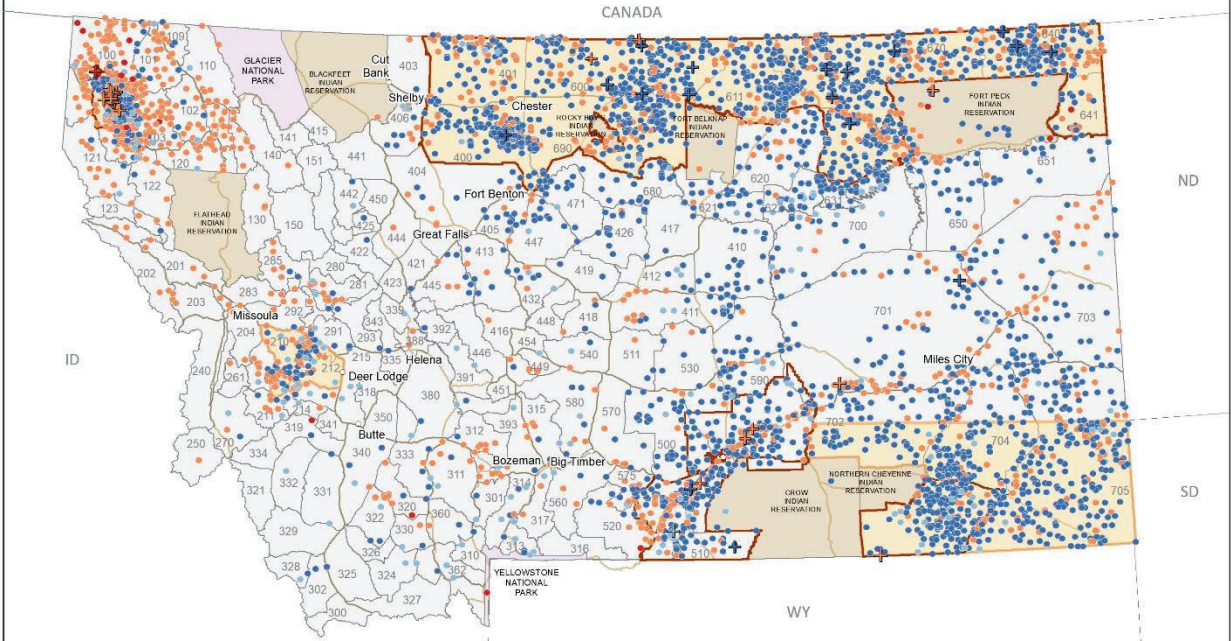
CWD MANAGEMENT

2019 Montana Chronic Wasting Disease Surveillance

MONTANA FWP

State-wide CWD Sampling

Samples collected from: 04/01/2019 - 12/03/2019



CWD Management Zone		CWD samples within Montana		Positive or suspect	
	CWD Management Zone	Mule deer	3018		17
	2019 Priority CWD Surveillance Area	White-tailed deer	1985		47
	Deer and Elk Hunting District	Elk	198		1
	Interstate and Highway	Moose	20		1



Updated: 20191203 Map produced by: MTFWP Geographic Data Services * Samples with an unknown location or of an unknown species are not represented in the map or table. Hunting districts valid for the 2019 hunting season. CWD sample data from MTFWP health lab. Reference data from MTFWP and Montana State Library. 0 40 80 Miles

A. Weighted surveillance points earned across surveillance units

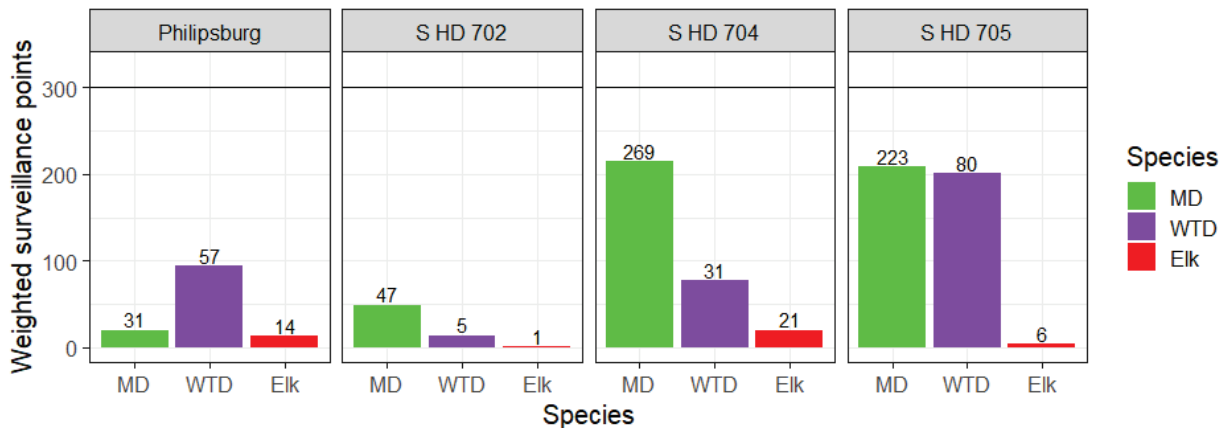


Figure A. Weighted surveillance points earned for mule deer (MD), white-tailed deer (WTD), and elk within each of the four minimum surveillance units, 2019. Under the weighted surveillance framework, different demographic groups (age, sex, or cause of death categories) of a species are assigned different point-values based on their relative risk of being infected and summed to a total point value. Our goal is to reach 300 weighted surveillance points in mule deer to detect $\geq 1\%$ prevalence with 95% confidence. The number of animals sampled is displayed above each bar.



CWD MANAGEMENT

B. Samples collected within priority monitoring areas

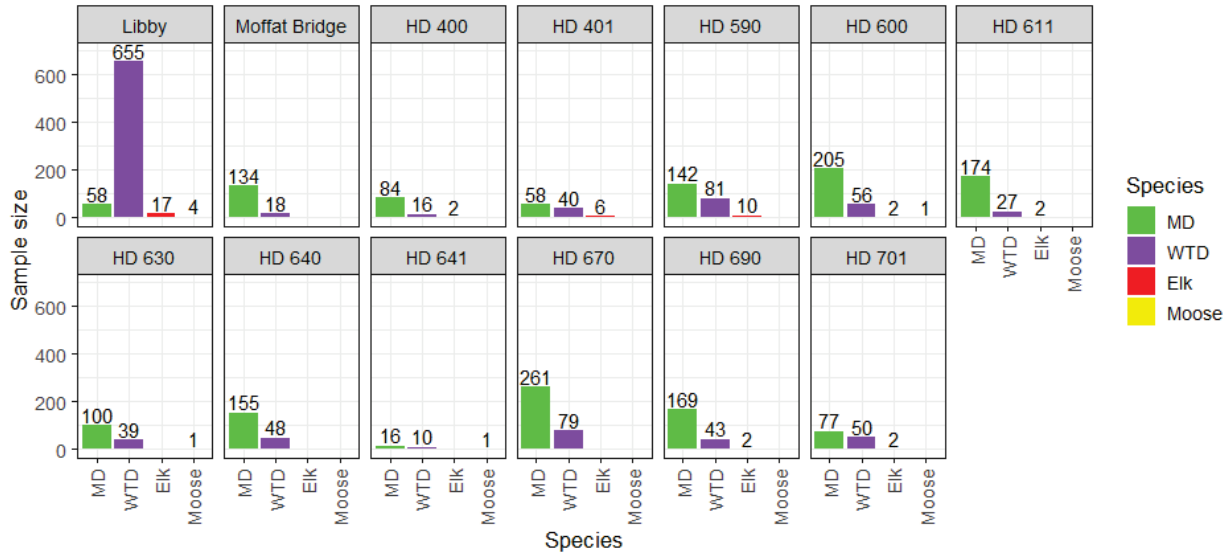


Figure B. Number of mule deer (MD), white-tailed deer (WTD), elk, and moose sampled for CWD testing within the priority monitoring areas around the state since April 1, 2019. “Libby” refers to the Libby CWD Management Zone, “Moffat Bridge” refers to the Moffat Bridge Special CWD Hunt Area, and HD 400 displays samples collected within hunting district 400 but outside of the Moffat Bridge Special Hunt Area. Our goal is to increase sampling across species, age, and sex-groups to improve estimates of prevalence. The sample size is displayed above each bar.

C. Number of samples collected by collection site

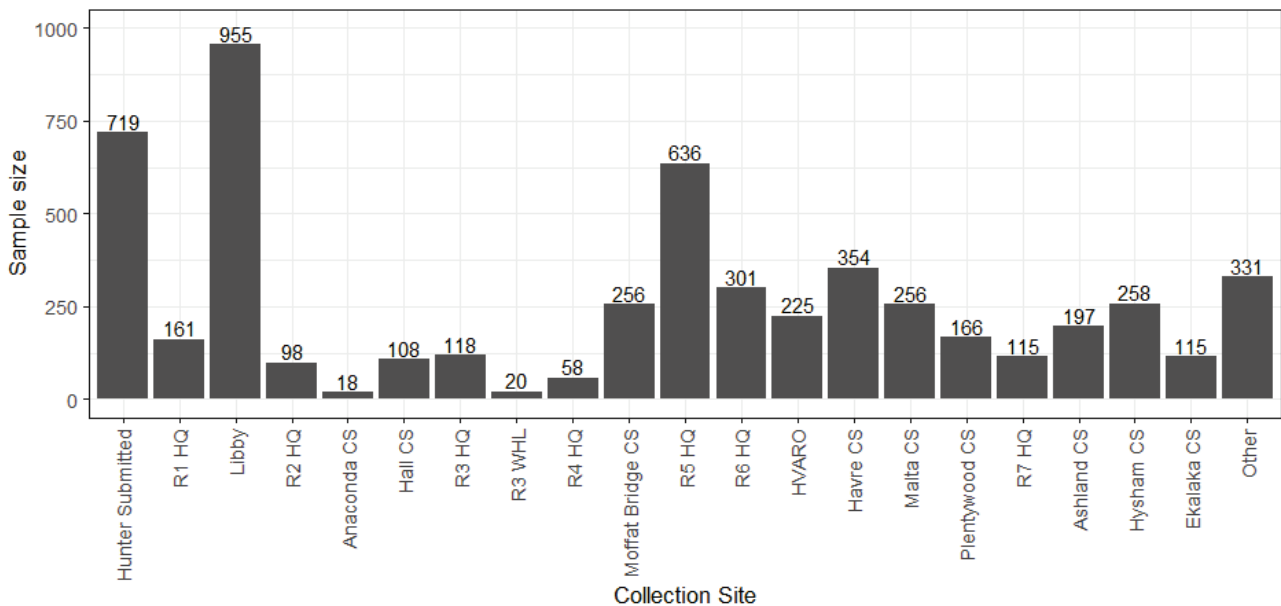
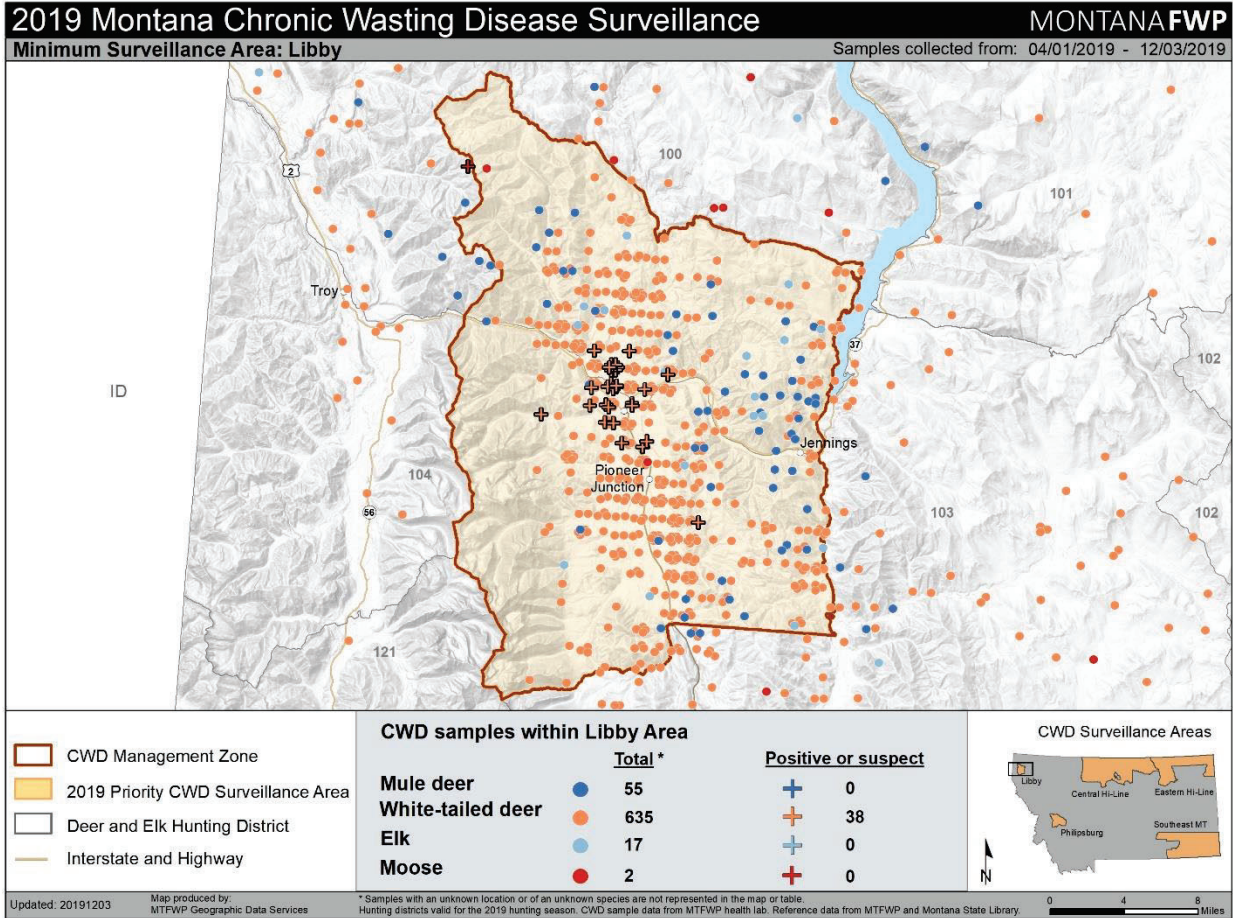


Figure C. Number of samples collected at various sampling locations, or collection sites, around the state. “Hunter submitted” is the number of sampled collected and submitted by hunters. “HQ” and “CS”



CWD MANAGEMENT

stand for headquarters and check station, respectively. "R3 WHL" stands for the Region 3 Wildlife Health Lab. "HVARO" stands for Havre Area Resource Office.





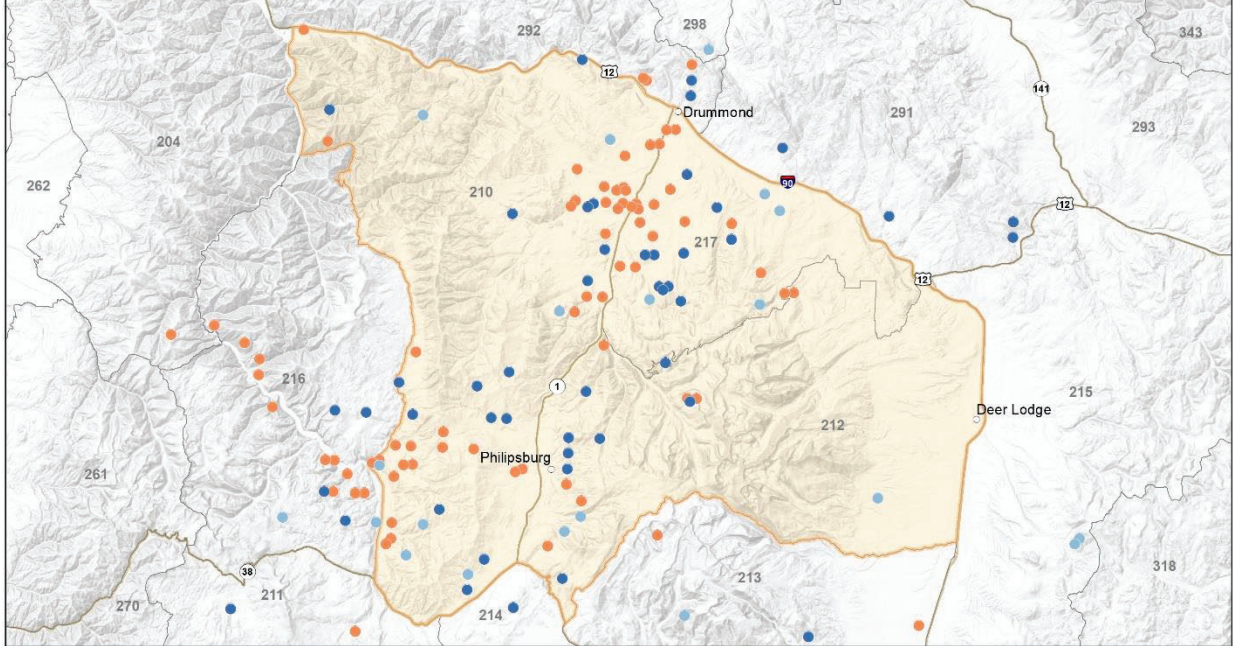
CWD MANAGEMENT

2019 Montana Chronic Wasting Disease Surveillance

MONTANA FWP

Minimum Surveillance Area: Philipsburg

Samples collected from: 04/01/2019 - 12/03/2019



- CWD Management Zone (not in map extent)
- 2019 Priority CWD Surveillance Area
- Deer and Elk Hunting District
- Interstate and Highway

CWD samples within Philipsburg Area

	Total *	Positive or suspect
Mule deer	33	0
White-tailed deer	57	0
Elk	14	0
Moose	0	0

CWD Surveillance Areas



Updated: 20191203 | Map produced by: MTFWP Geographic Data Services | * Samples with an unknown location or of an unknown species are not represented in the map or table. Hunting districts valid for the 2019 hunting season. CWD sample data from MTFWP health lab. Reference data from MTFWP and Montana State Library.



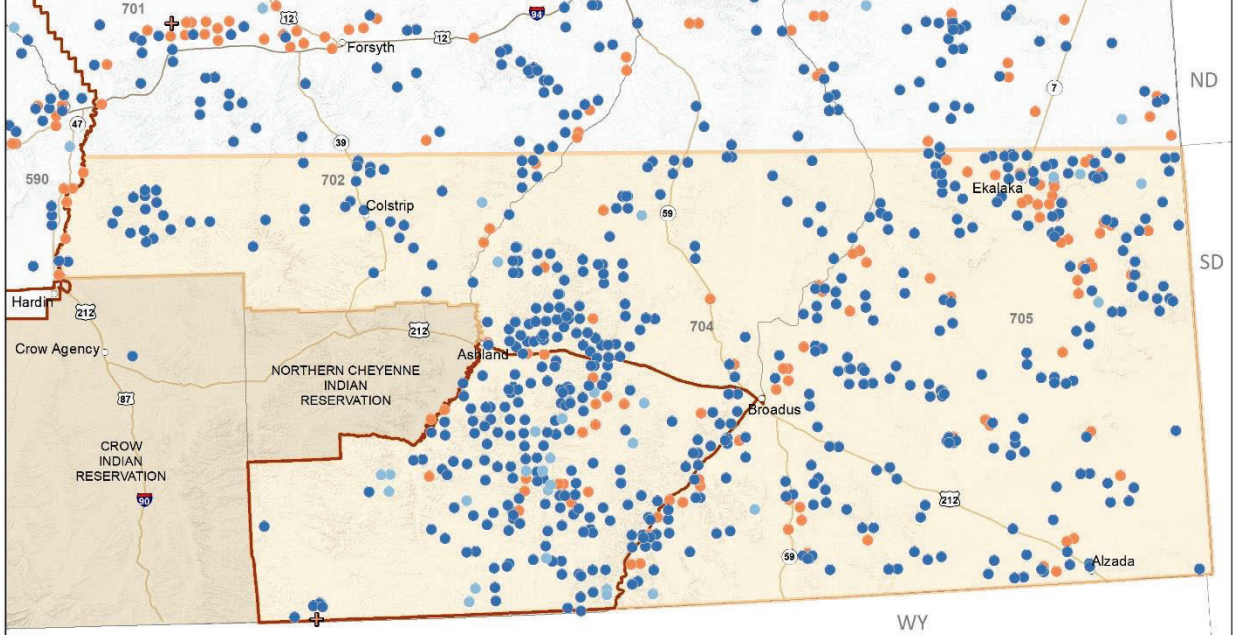
CWD MANAGEMENT

2019 Montana Chronic Wasting Disease Surveillance

MONTANA FWP

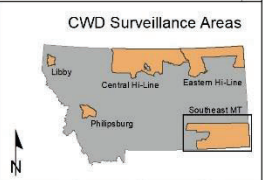
Minimum Surveillance Area: Southeast MT

Samples collected from: 04/01/2019 - 12/03/2019



- CWD Management Zone
- 2019 Priority CWD Surveillance Area
- Deer and Elk Hunting District
- Interstate and Highway

CWD samples within Southeast MT Area			
	Total *	Positive or suspect	
Mule deer	543	+	0
White-tailed deer	114	+	1
Elk	28	+	0
Moose	0	+	0



Updated: 20191203 | Map produced by: MTFWP Geographic Data Services | * Samples with an unknown location or of an unknown species are not represented in the map or table. Hunting districts valid for the 2019 hunting season. CWD sample data from MTFWP health lab. Reference data from MTFWP and Montana State Library.



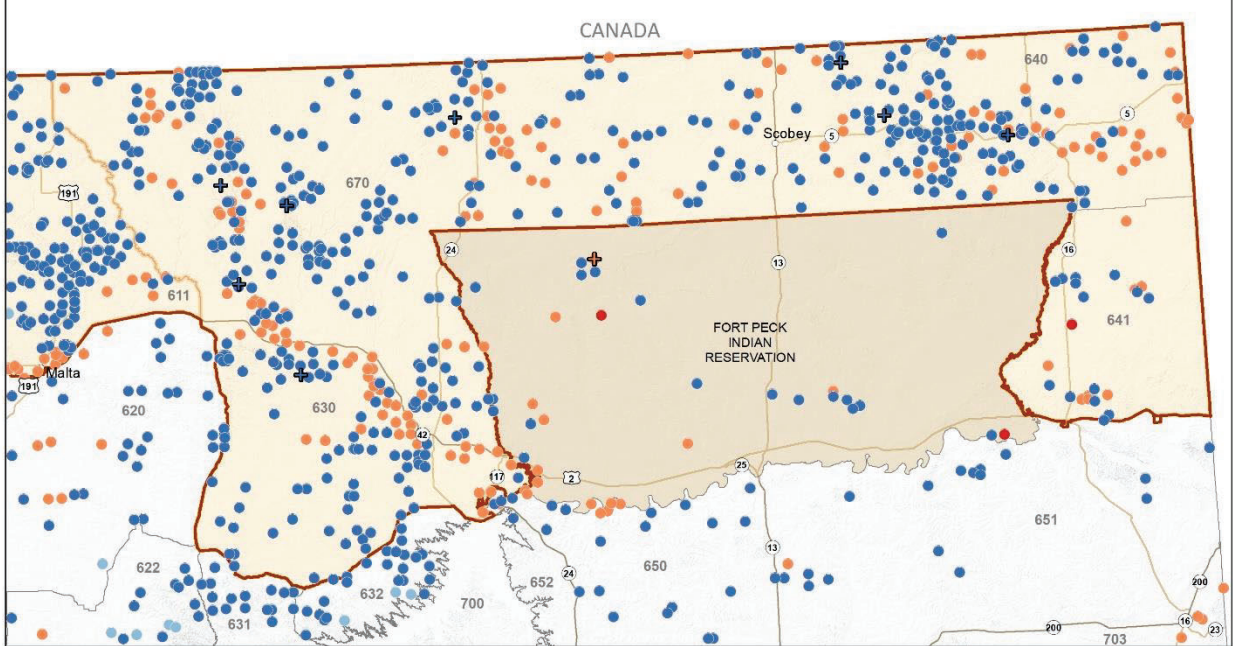
CWD MANAGEMENT

2019 Montana Chronic Wasting Disease Surveillance

MONTANA FWP

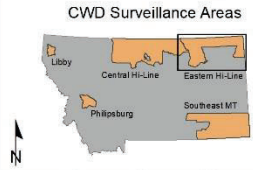
Minimum Surveillance Area: Eastern Hi-Line

Samples collected from: 04/01/2019 - 12/03/2019



- CWD Management Zone
- 2019 Priority CWD Surveillance Area
- Deer and Elk Hunting District
- Interstate and Highway

CWD samples within Eastern Hi-Line Area			
	Total *	Positive or suspect	
Mule deer	524	+	8
White-tailed deer	170	+	0
Elk	0	+	0
Moose	1	+	0



Updated: 20191203 | Map produced by: MTFWP Geographic Data Services | * Samples with an unknown location or of an unknown species are not represented in the map or table. Hunting districts valid for the 2019 hunting season. CWD sample data from MTFWP health lab. Reference data from MTFWP and Montana State Library. | 0 10 20 Miles



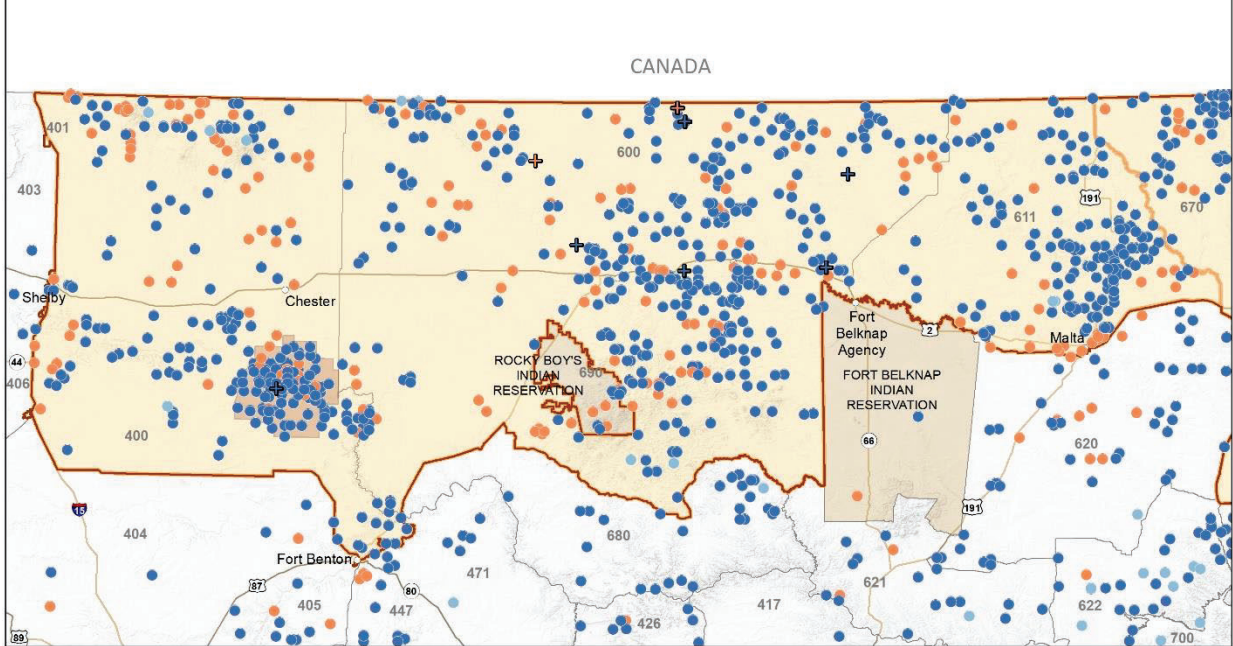
CWD MANAGEMENT

2019 Montana Chronic Wasting Disease Surveillance

MONTANA FWP

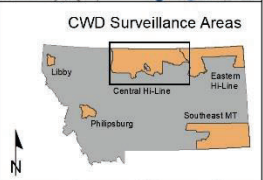
Minimum Surveillance Area: Central Hi-Line

Samples collected from: 04/01/2019 - 12/03/2019



- CWD Management Zone
- 2019 Priority CWD Surveillance Area
- Moffat Bridge Hunt Area
- Deer and Elk Hunting District
- Interstate and Highway

CWD samples within Central Hi-Line Area			
	Total *	Positive or suspect	
Mule deer	800	+	6
White-tailed deer	197	+	3
Elk	14	+	0
Moose	0	+	0



Updated: 20191203 | Map produced by: MTFWP Geographic Data Services | * Samples with an unknown location or of an unknown species are not represented in the map or table. Hunting districts valid for the 2019 hunting season. CWD sample data from MTFWP health lab. Reference data from MTFWP and Montana State Library. | 0 12.5 25 Miles