

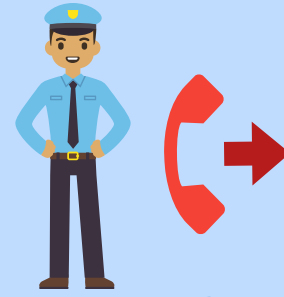
HANDLE WITH CARE: How It Works

Education Interim Committee
June 18-19, 2020
Handle With Care
Exhibit 8



First Responders

When responding to a call where a child is involved, they use their training and judgement to determine if it could be a traumatic experience for the child.



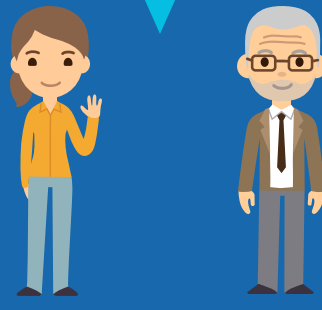
Notify the School

The First Responder collects the child's name, grade, and what school they go to. Then the school is notified with the words "Handle with Care" and the impacted child's name



Observe and Support

After being notified, the appropriate staff keep an eye on the student throughout the day, and are ready to offer additional support if needed.



The Appropriate Staff Are Notified

Only the appropriate staff see the Handle With Care notice. For example the principal, the student's teacher, and if necessary the counselor.



Additional Resources

Nothing is required of the student after their traumatic event. But the school staff is there to help and support them. They will have additional resources ready to help the child if necessary.



The Goal

We know that traumatized children have difficulty learning. With this program, we can help children feel safe and supported in a compassionate school environment. This also helps school staff identify and provide resources and support to children that are being exposed to numerous traumatic experiences.