

2019 – Early Summer Water Supply Outlook

Water Policy Interim Committee

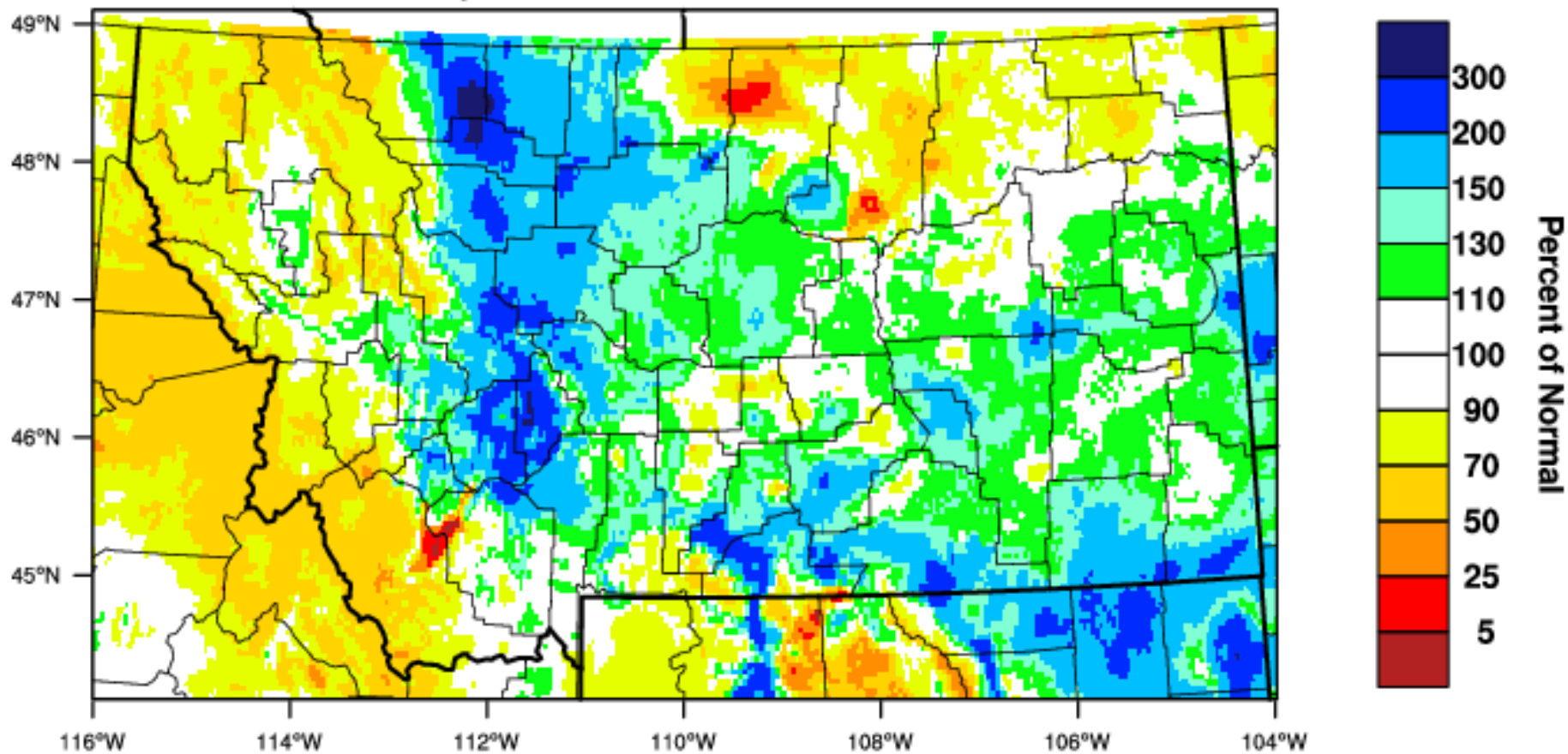
June 10, 2019

Michael Downey – DNRC, Water Management Bureau



Montana - Precipitation

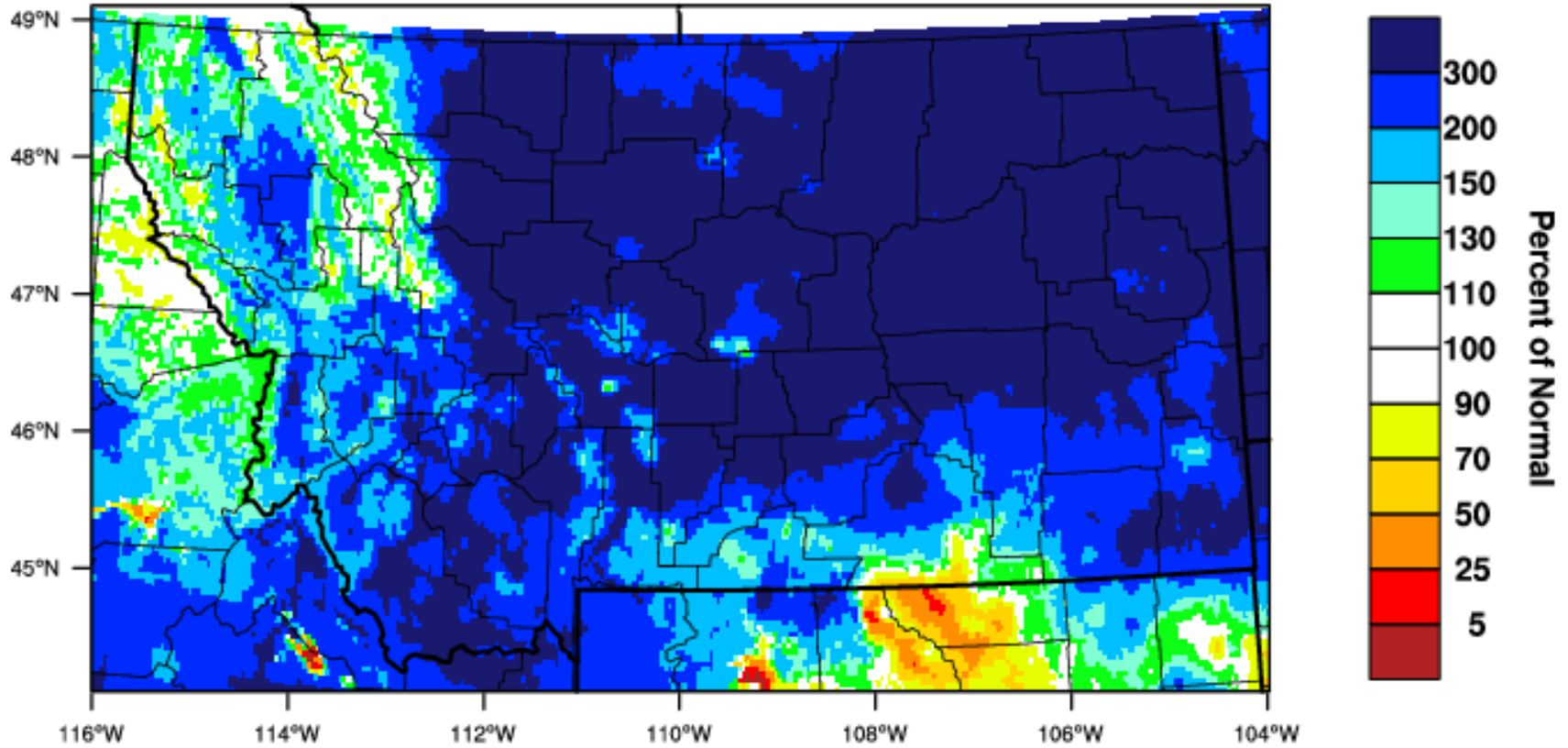
January 2019 Percent of 1981-2010 Normal



WestWide Drought Tracker, U Idaho/WRCC Data Source: PRISM (Prelim), created 16 FEB 2019

Montana - Precipitation

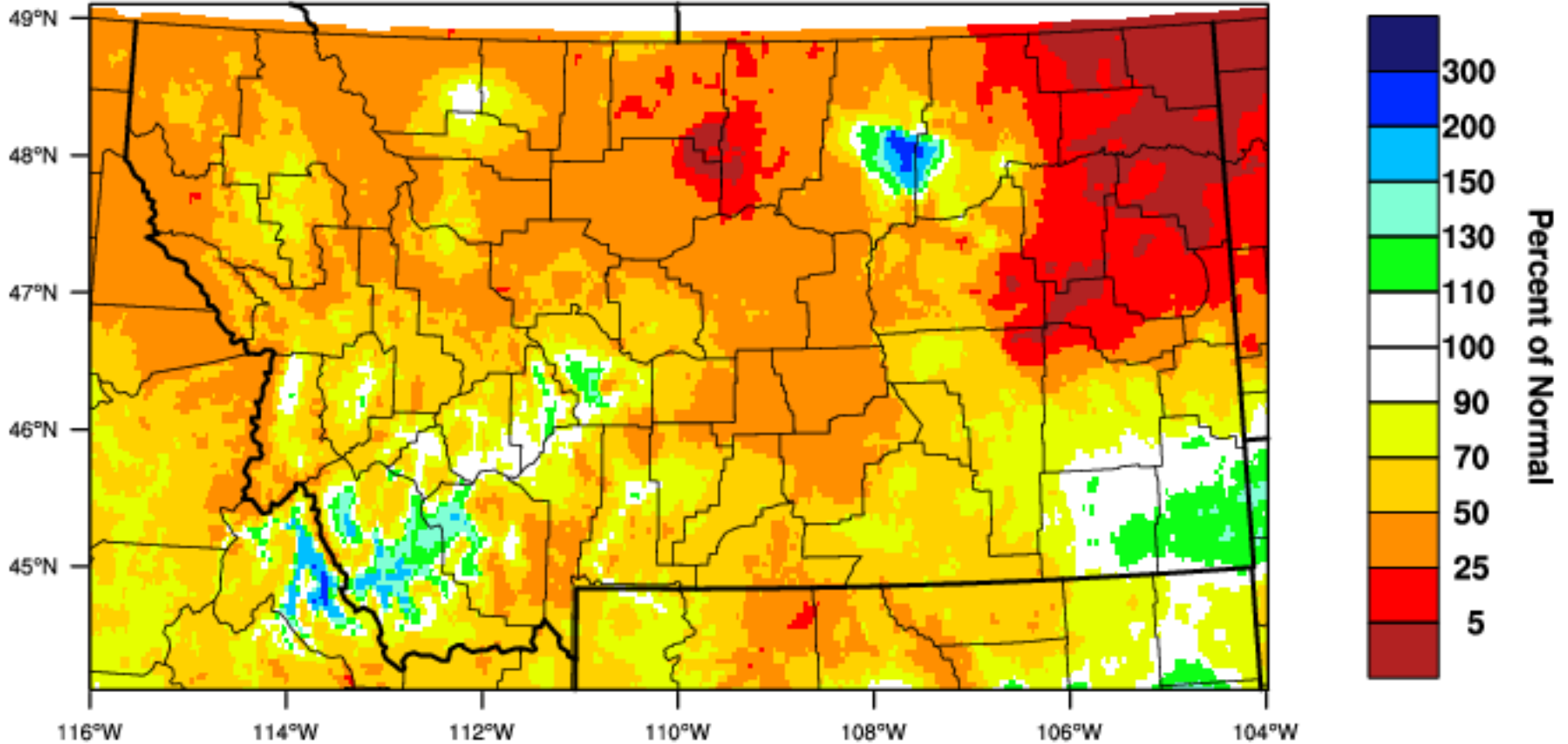
February 2019 Percent of 1981-2010 Normal



WestWide Drought Tracker, U Idaho/WRCC Data Source: PRISM (Prelim), created 16 MAR 2019

Montana - Precipitation

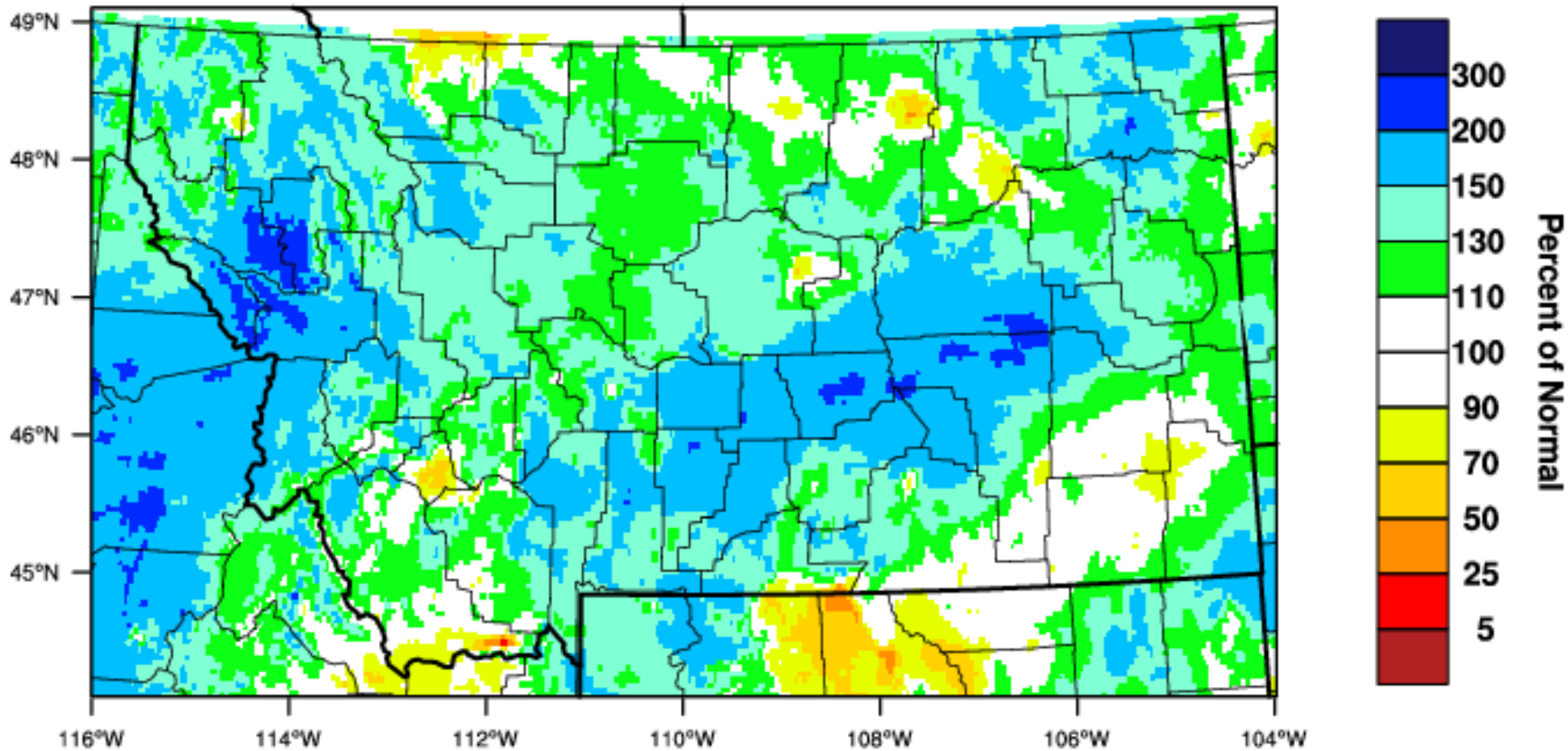
March 2019 Percent of 1981-2010 Normal



WestWide Drought Tracker, U Idaho/WRCC Data Source: PRISM (Prelim), created 16 APR 2019

Montana - Precipitation

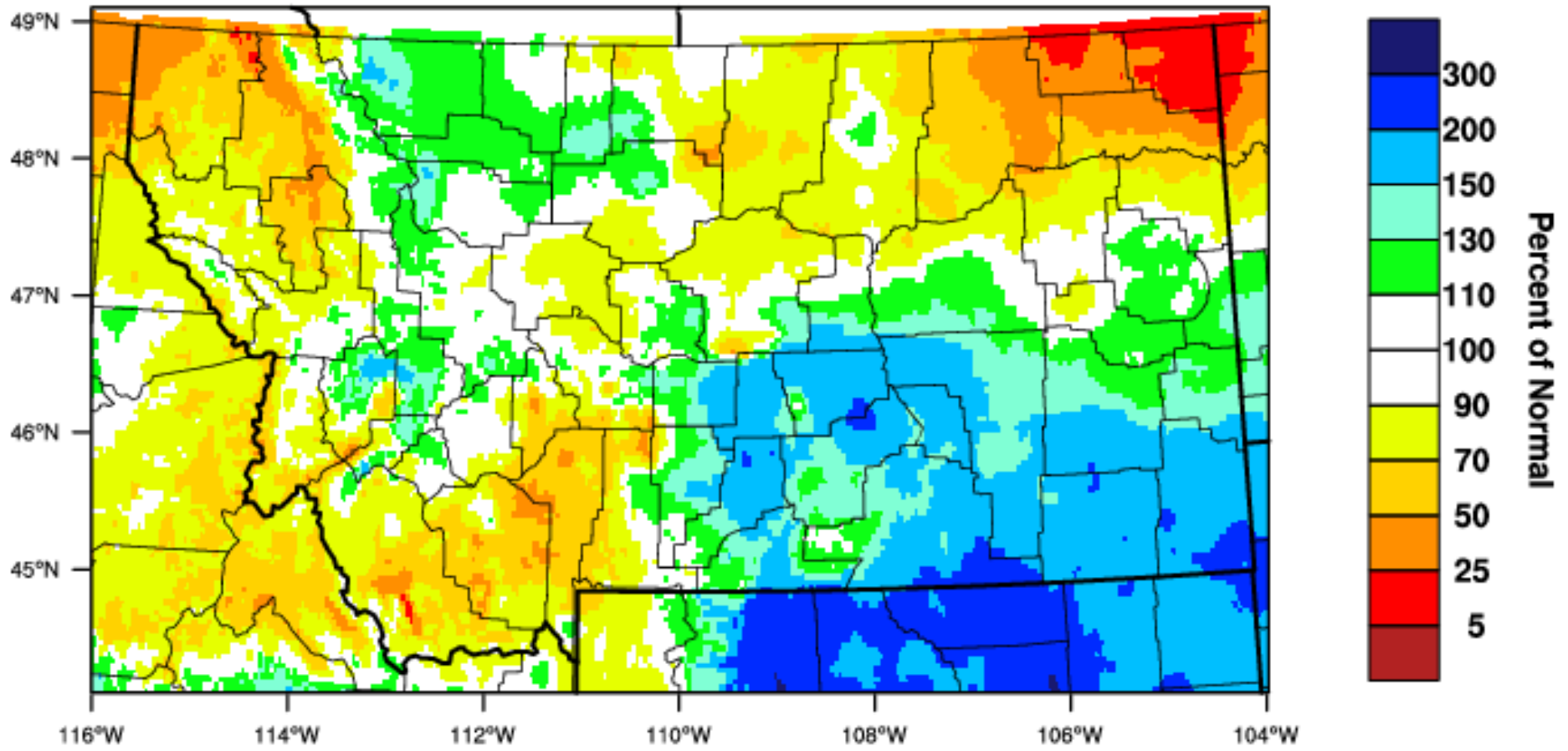
April 2019 Percent of 1981-2010 Normal



WestWide Drought Tracker, U Idaho/WRCC Data Source: PRISM (Prelim), created 16 MAY 2019

Montana - Precipitation

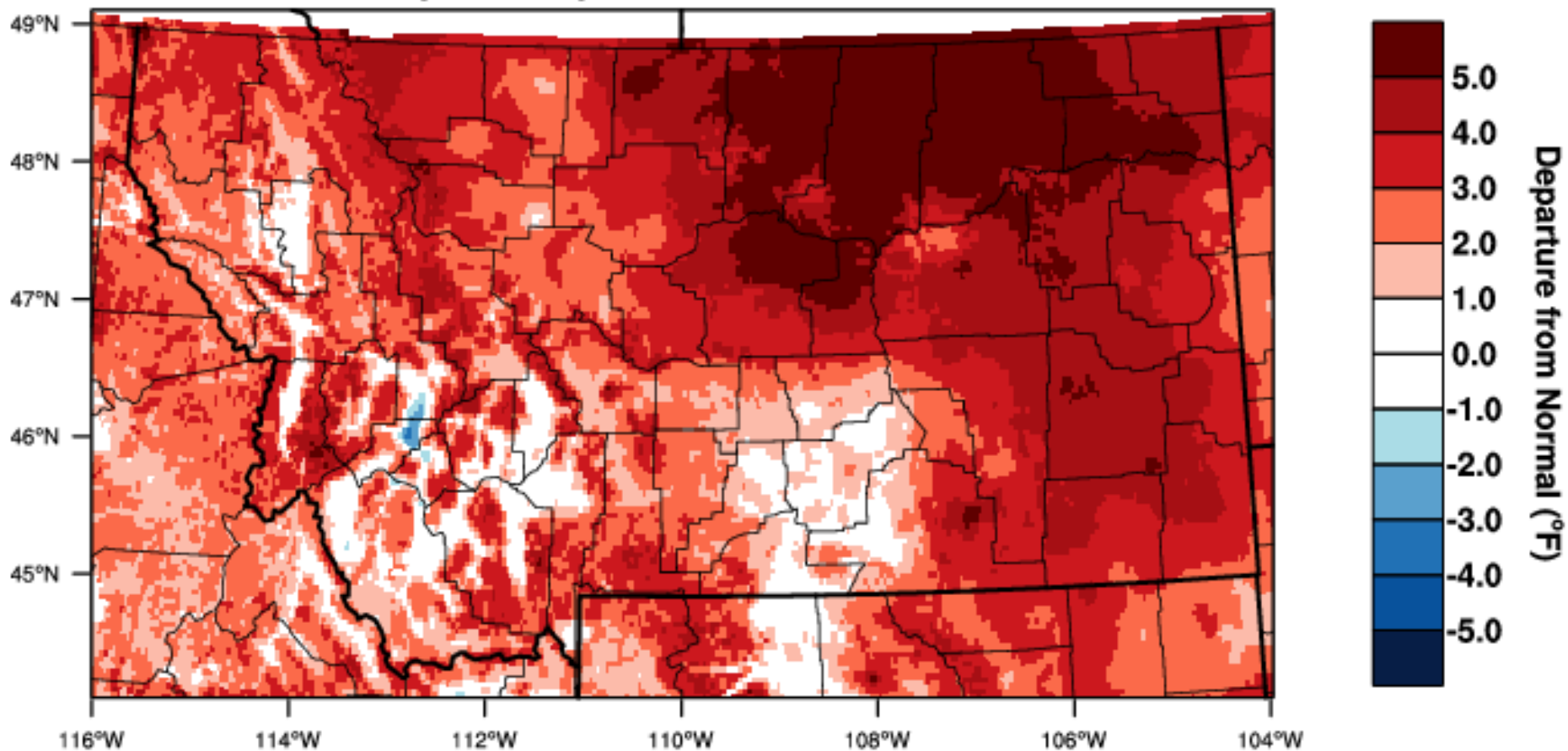
May 2019 Percent of 1981-2010 Normal



WestWide Drought Tracker, U Idaho/WRCC Data Source: PRISM (Prelim), created 7 JUN 2019

Montana - Mean Temperature

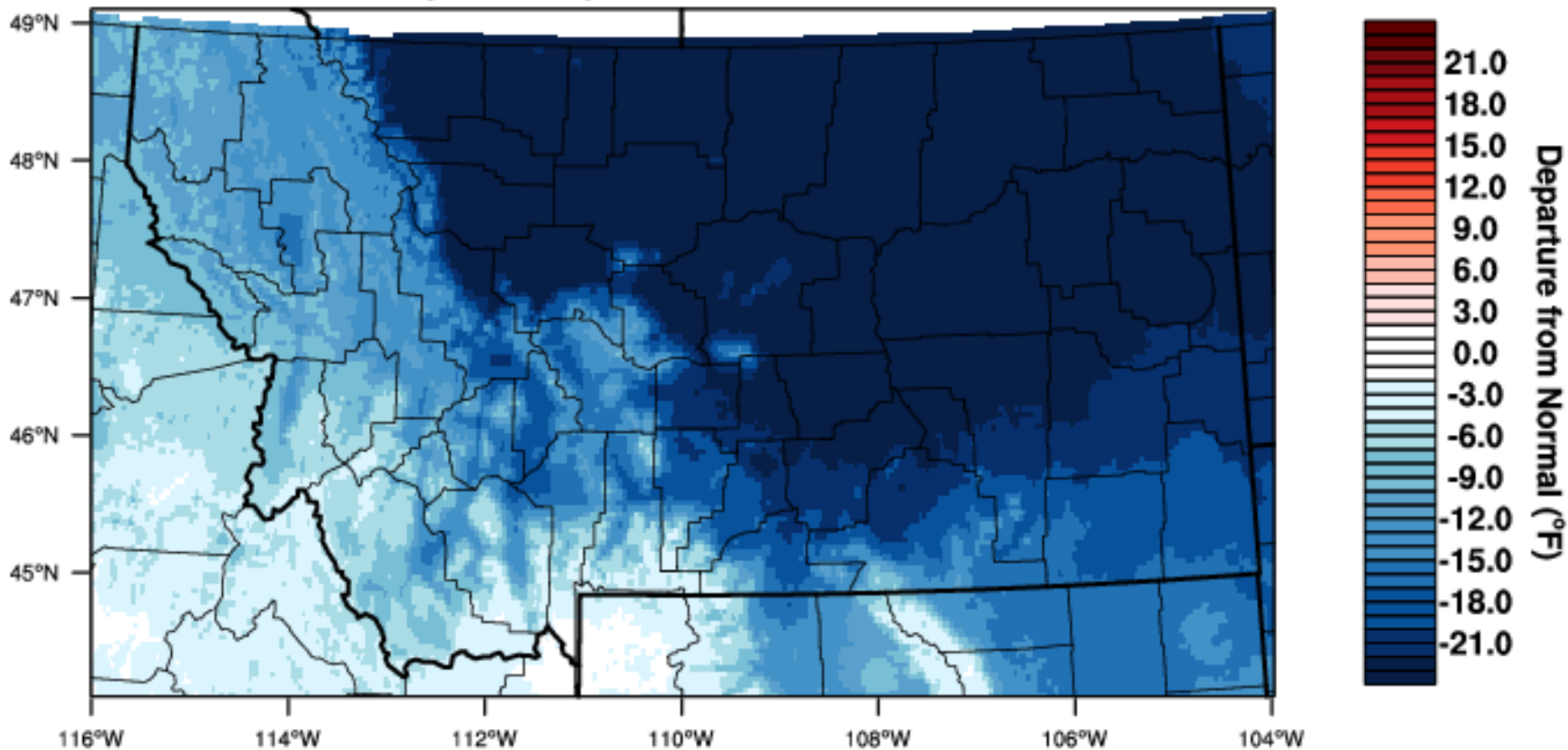
January 2019 Departure from 1981-2010 Normal



WestWide Drought Tracker, U Idaho/WRCC Data Source: PRISM (Prelim), created 16 FEB 2019

Montana - Mean Temperature

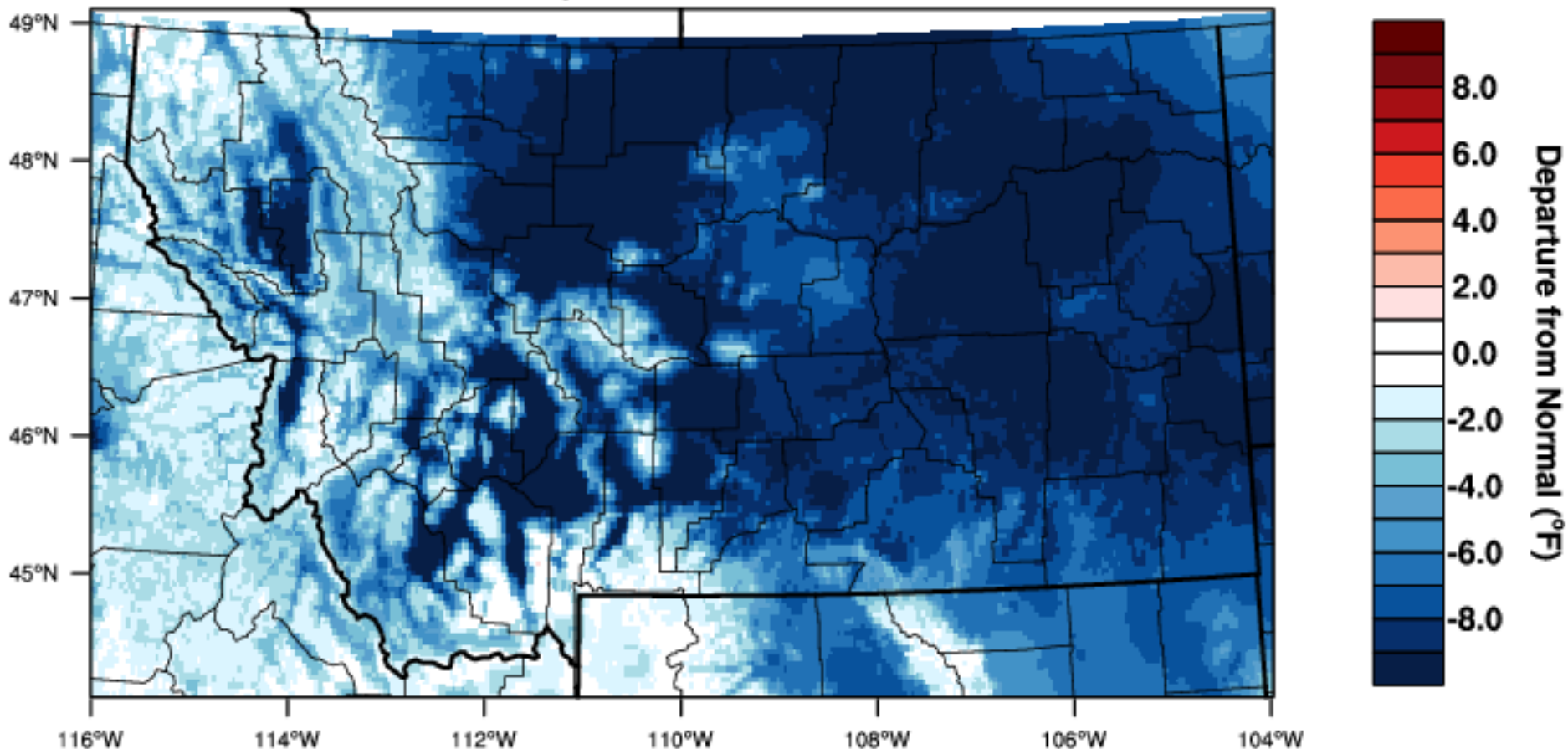
February 2019 Departure from 1981-2010 Normal



WestWide Drought Tracker, U Idaho/WRCC Data Source: PRISM (Prelim), created 16 MAR 2019

Montana - Mean Temperature

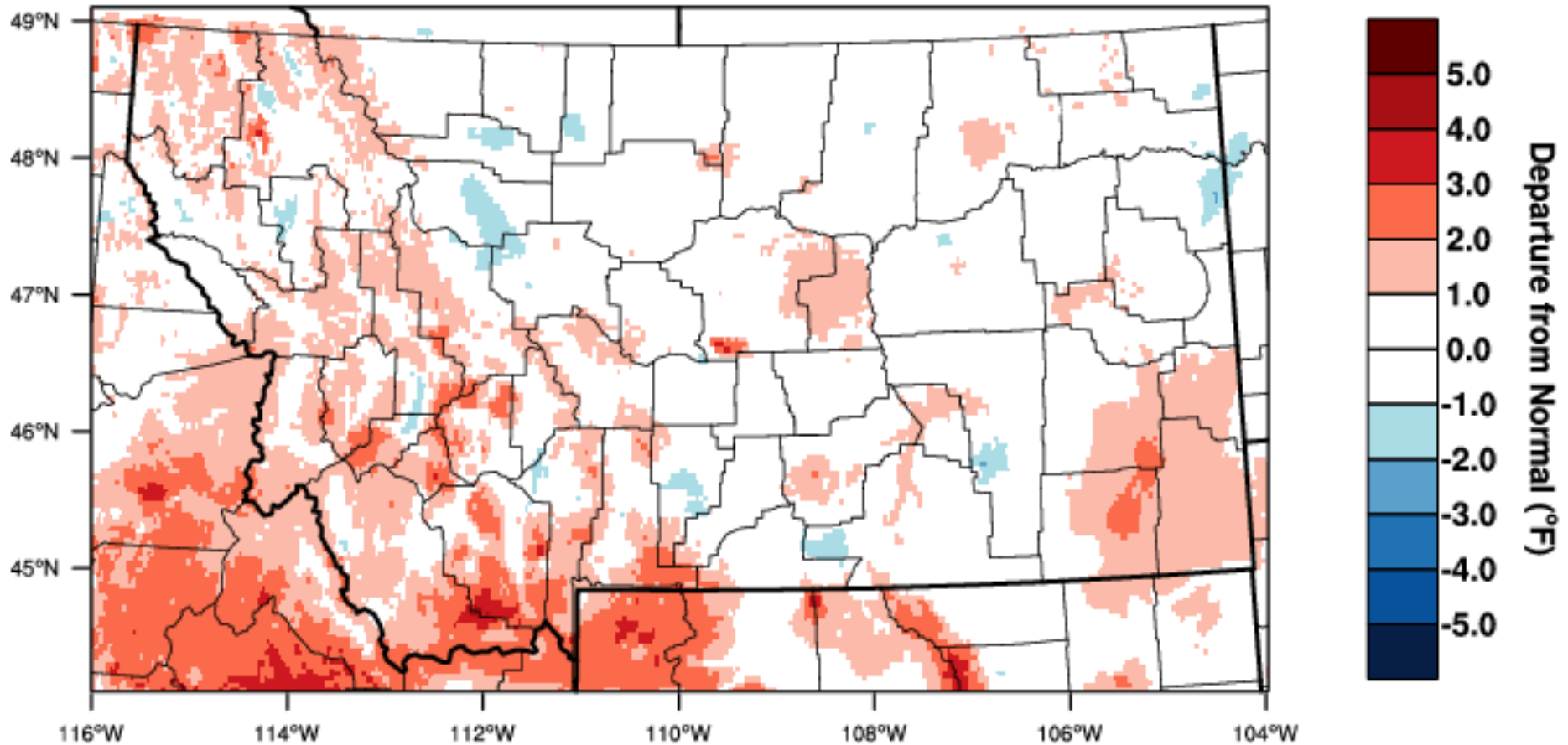
March 2019 Departure from 1981-2010 Normal



WestWide Drought Tracker, U Idaho/WRCC Data Source: PRISM (Prelim), created 16 APR 2019

Montana - Mean Temperature

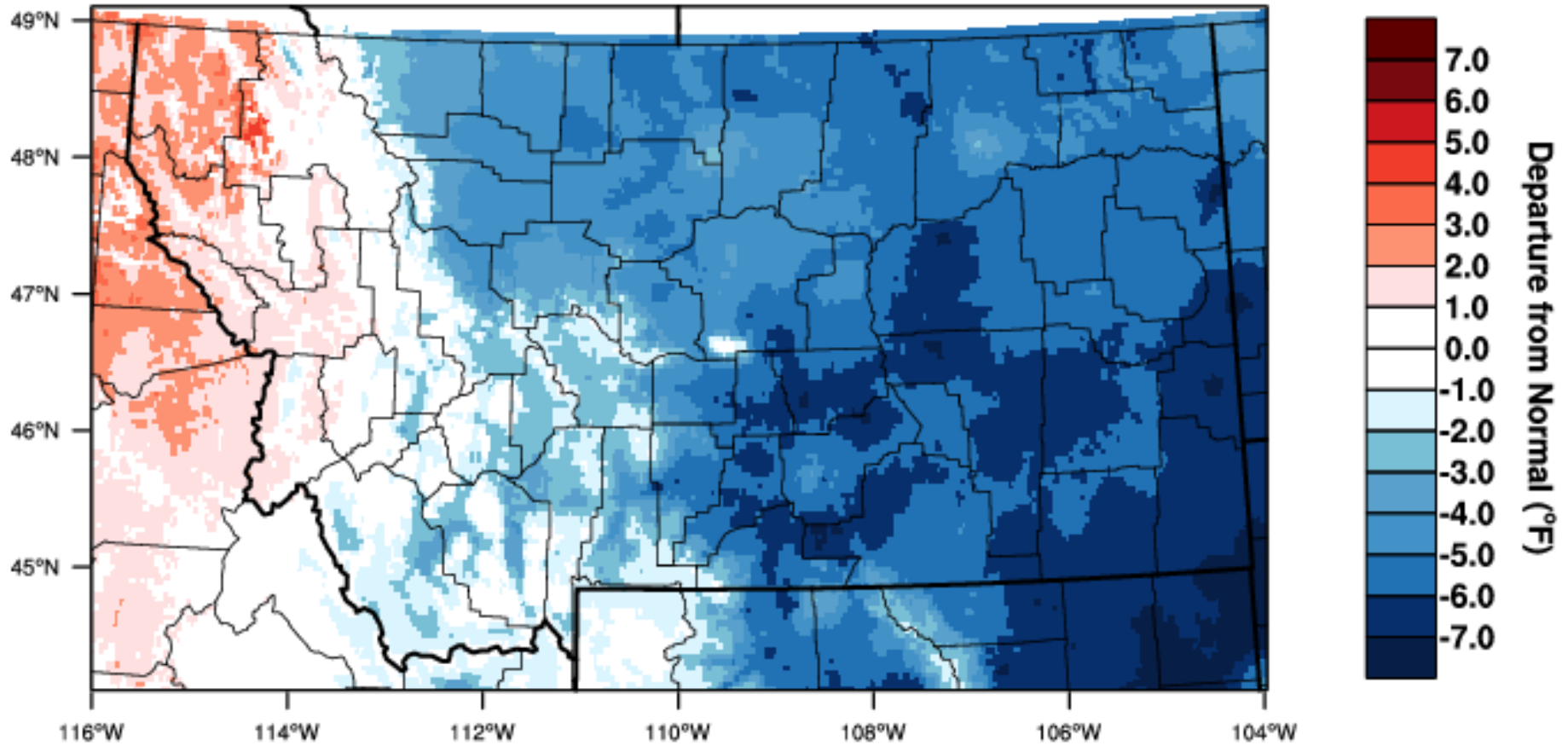
April 2019 Departure from 1981-2010 Normal



WestWide Drought Tracker, U Idaho/WRCC Data Source: PRISM (Prelim), created 16 MAY 2019

Montana - Mean Temperature

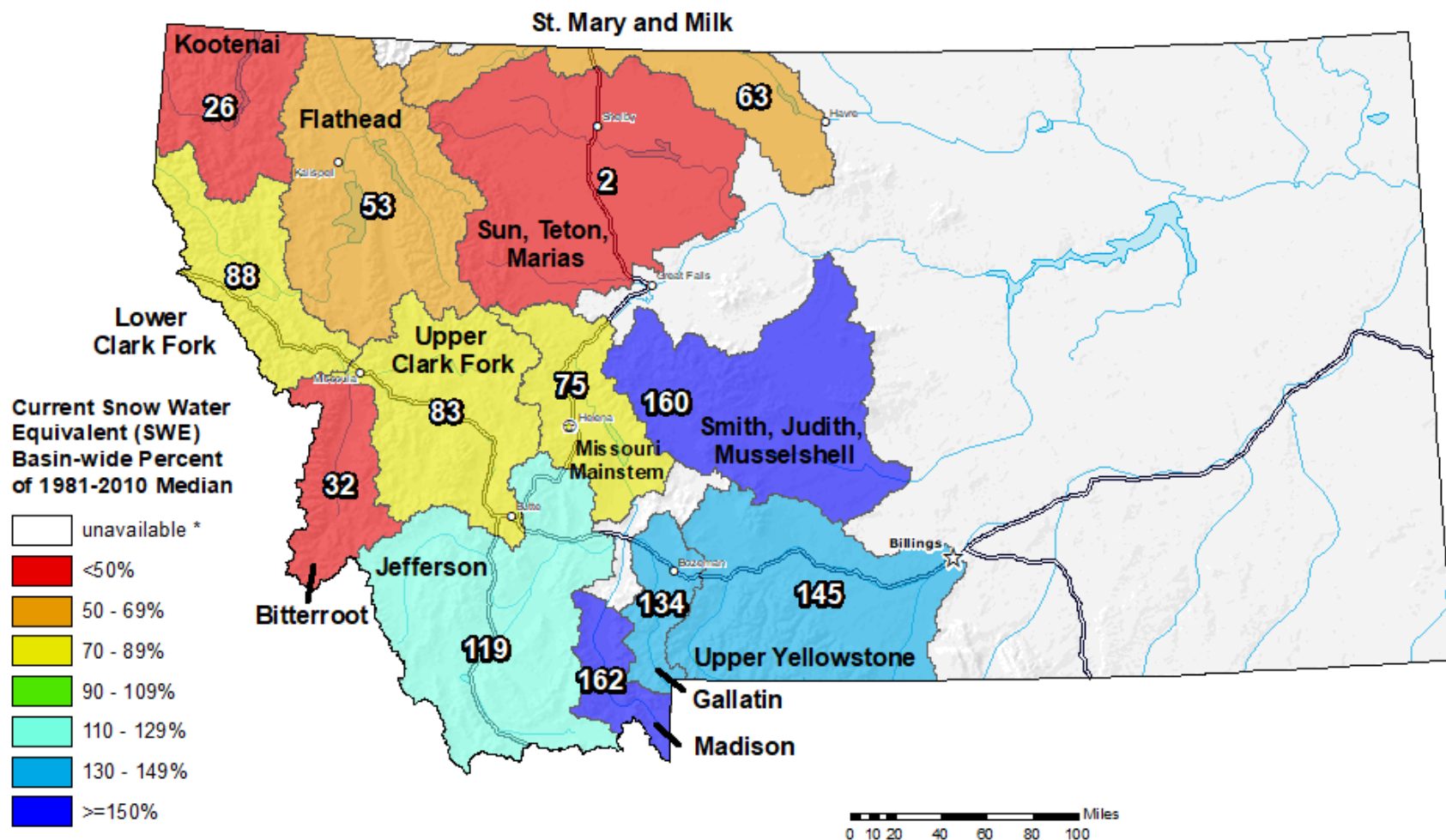
May 2019 Departure from 1981-2010 Normal



WestWide Drought Tracker, U Idaho/WRCC Data Source: PRISM (Prelim), created 7 JUN 2019

Montana SNOTEL Current Snow Water Equivalent (SWE) % of Normal

Jun 10, 2019



* Data unavailable at time of posting or measurement is not representative at this time of year

*Provisional Data
Subject to Revision*

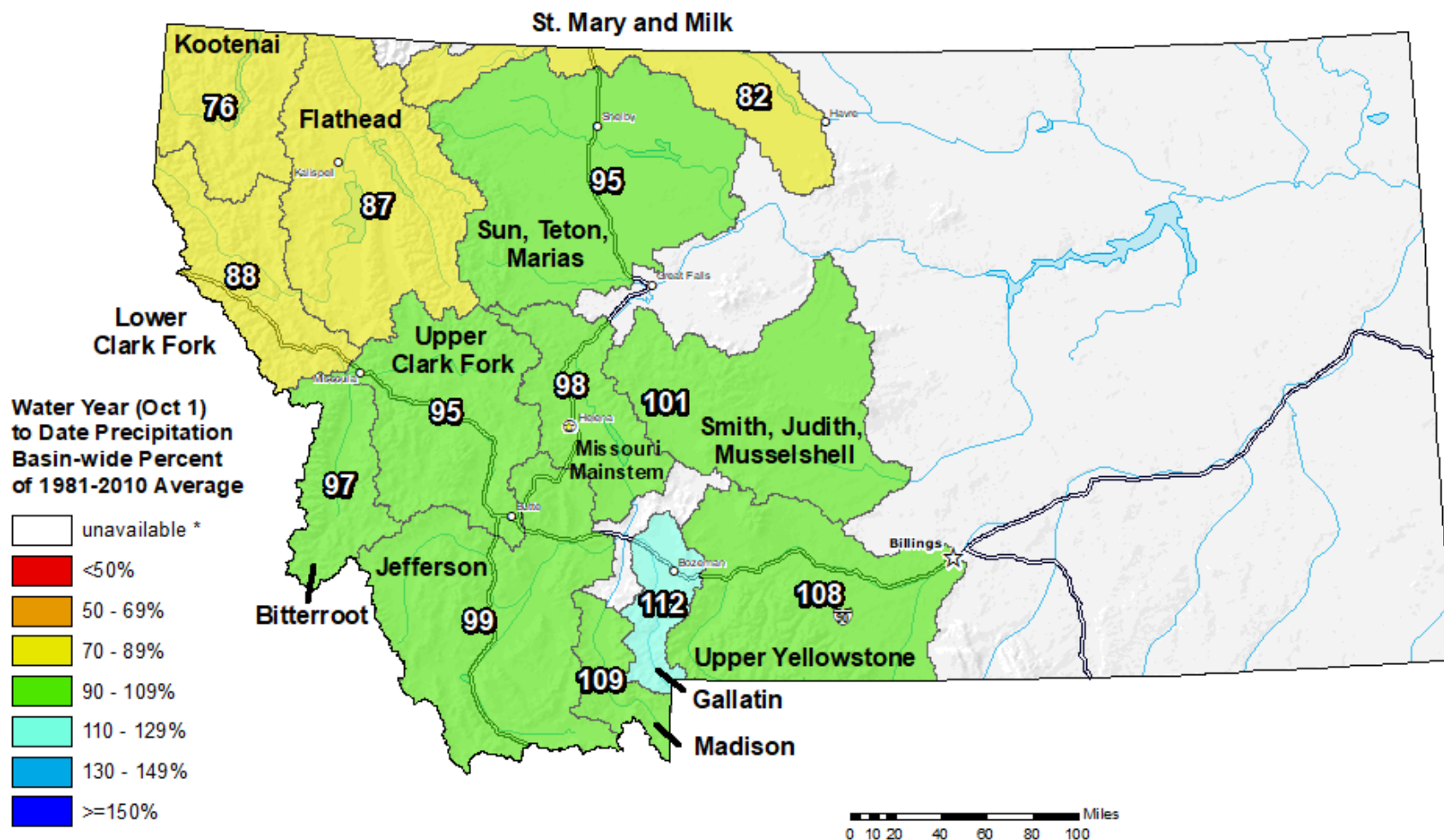


The snow water equivalent percent of normal represents the current snow water equivalent found at selected SNOTEL sites in or near the basin compared to the average value for those sites on this day. Data based on the first reading of the day (typically 00:00).

Prepared by:
USDA/NRCS National Water and Climate Center
Portland, Oregon
<http://www.wcc.nrcs.usda.gov>

Montana SNOTEL Water Year (Oct 1) to Date Precipitation % of Normal

Jun 10, 2019



* Data unavailable at time of posting or measurement is not representative at this time of year

*Provisional Data
Subject to Revision*



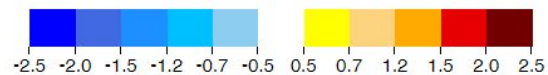
The water year (oct 1) to date precipitation percent of normal represents the accumulated precipitation found at selected SNOTEL sites in or near the basin compared to the average value for those sites on this day. Data based on the first reading of the day (typically 00:00).

Prepared by:
USDA/NRCS National Water and Climate Center
Portland, Oregon
<http://www.wcc.nrcs.usda.gov>

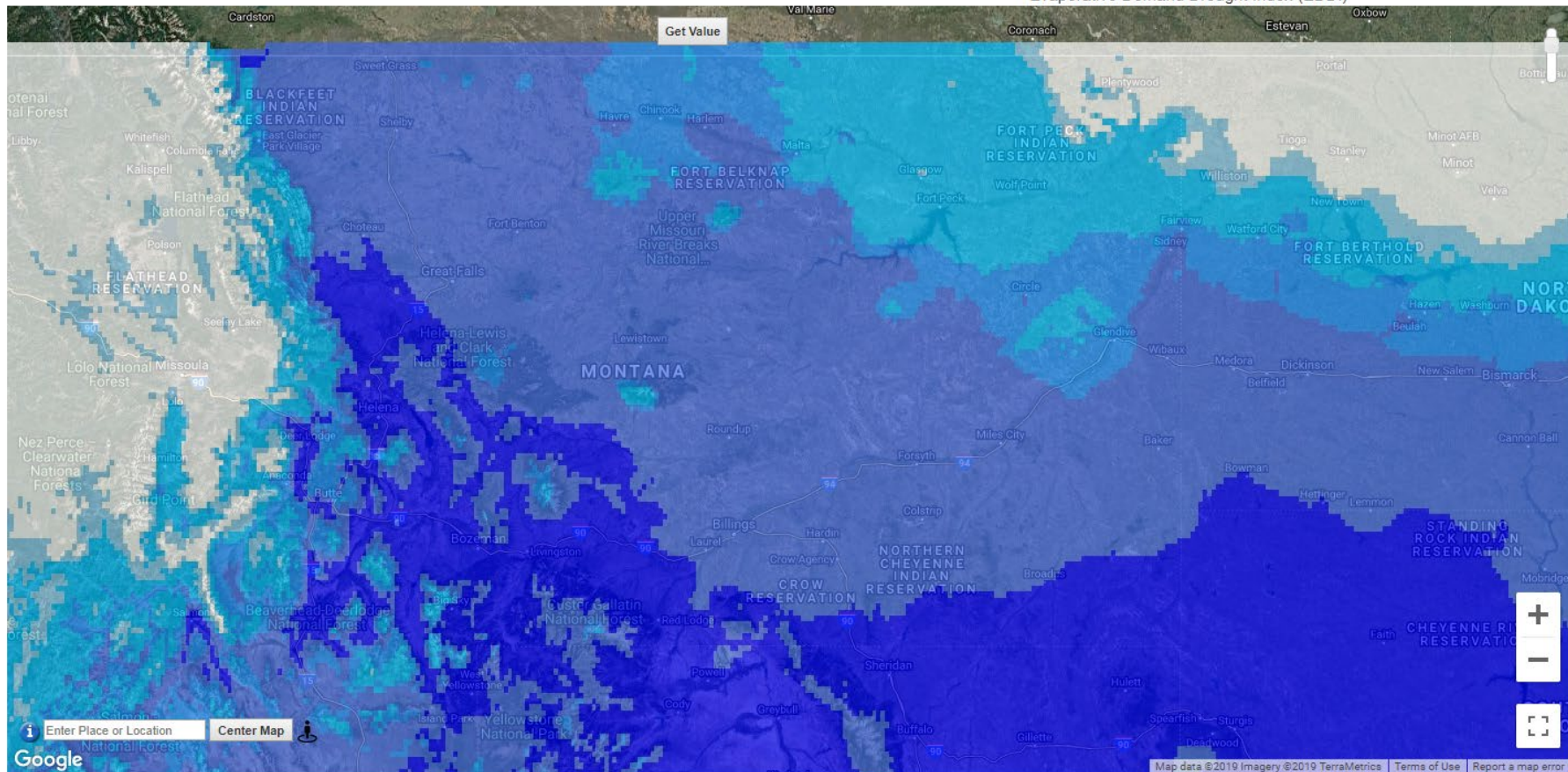
EDDI – Last 30 Days

Evaporative Demand Drought Index (EDDI) (gridMET)

2019-05-08 to 2019-06-10, standardized from 1979 - 2019



Evaporative Demand Drought Index (EDDI)



Generated by ClimateEngine.org

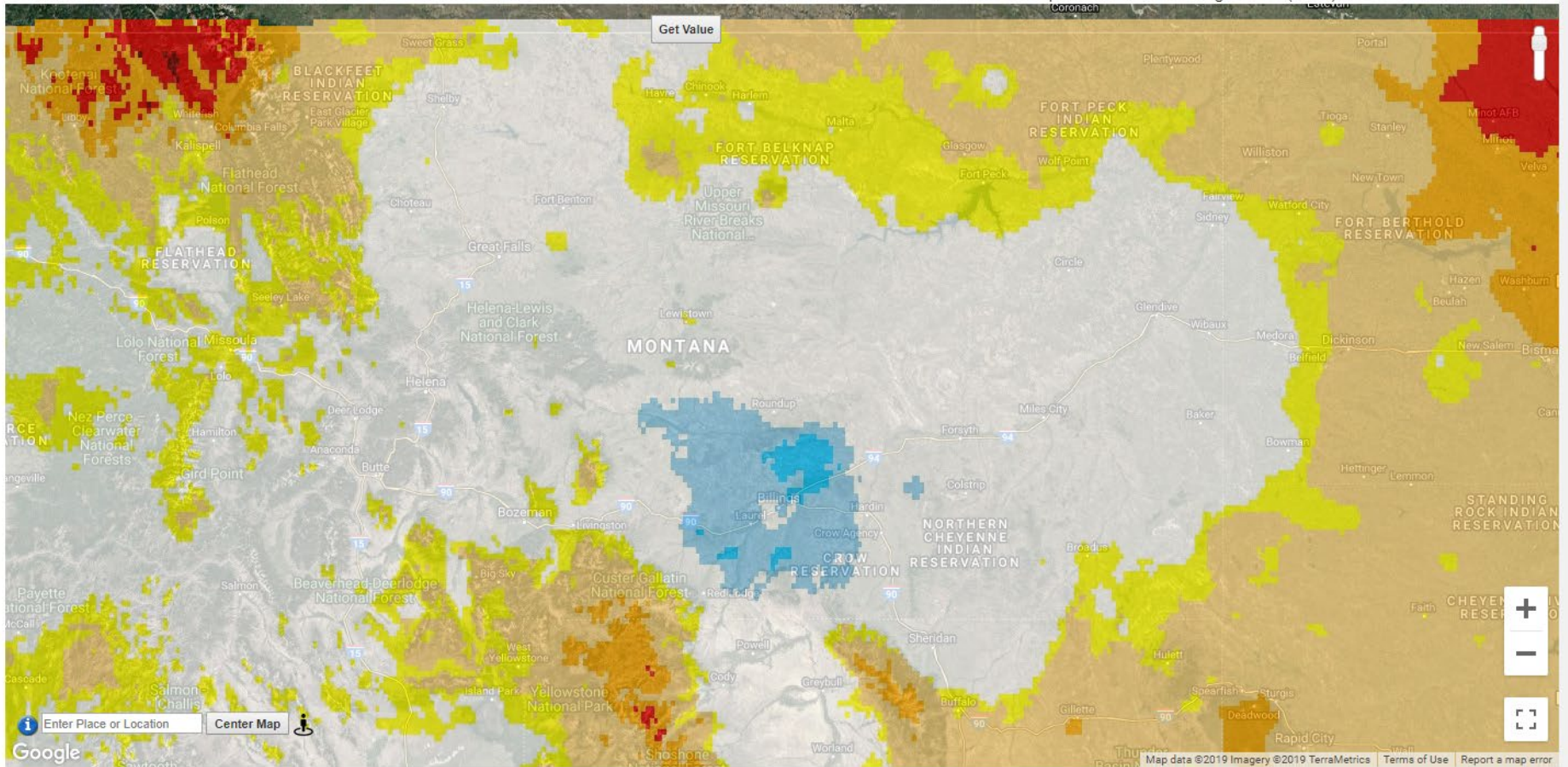
EDDI – May 2018

Evaporative Demand Drought Index (EDDI) (gridMET)

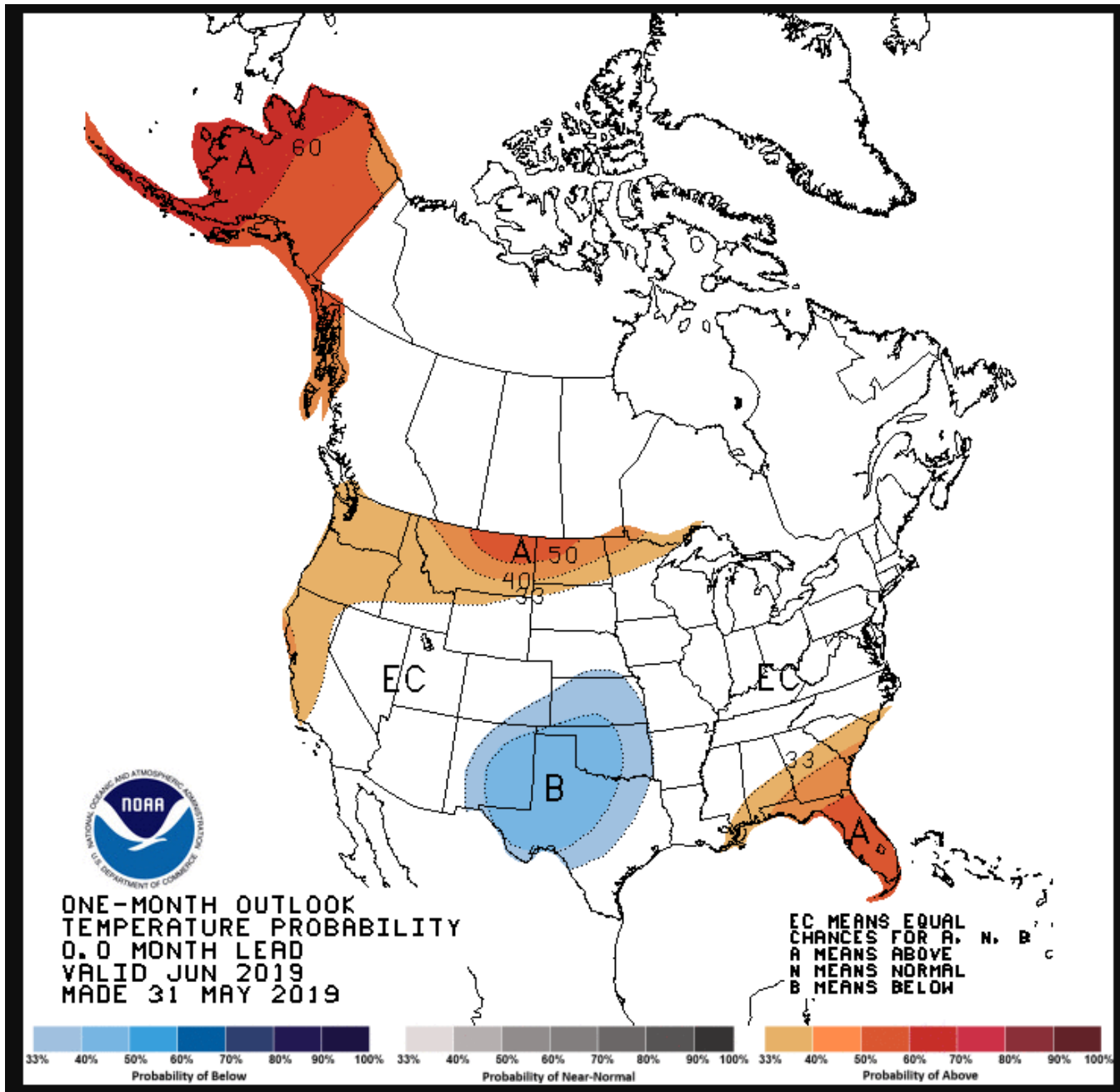
2018-05-08 to 2018-06-10, standardized from 1979 - 2019



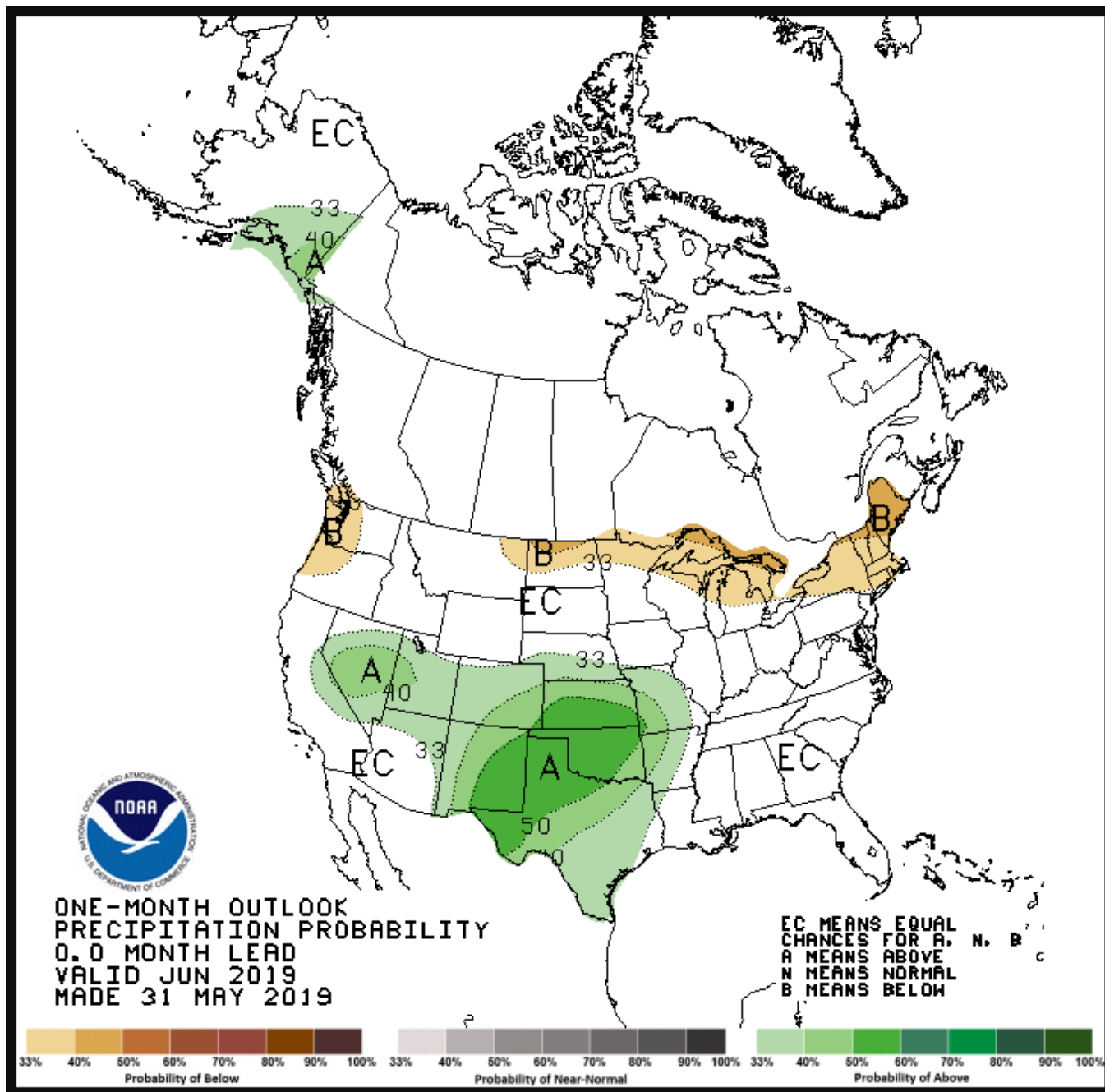
Evaporative Demand Drought Index (EDDI)



One-Month Temperature Outlook



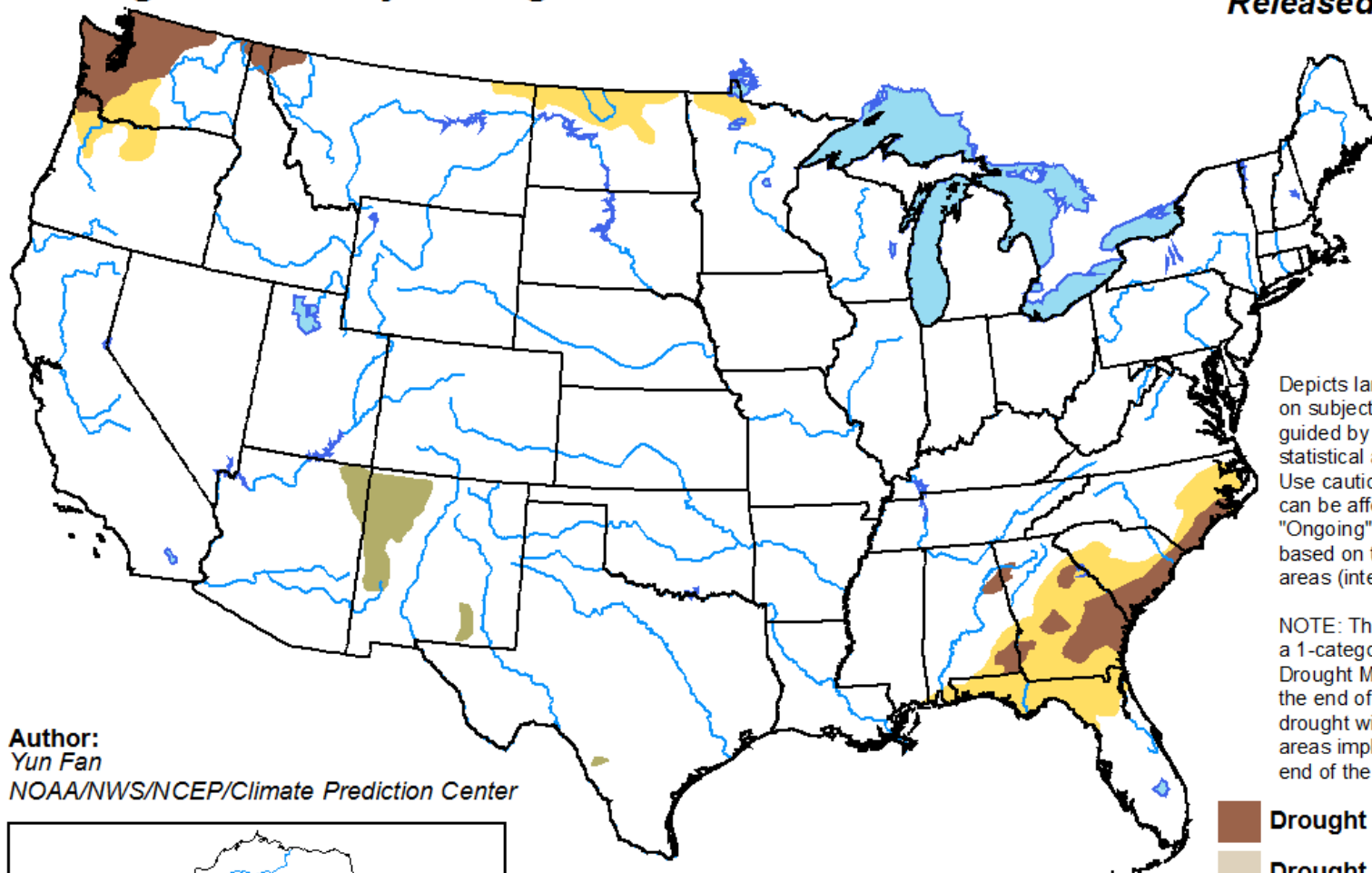
One-Month Precipitation Outlook



U.S. Monthly Drought Outlook

Drought Tendency During the Valid Period

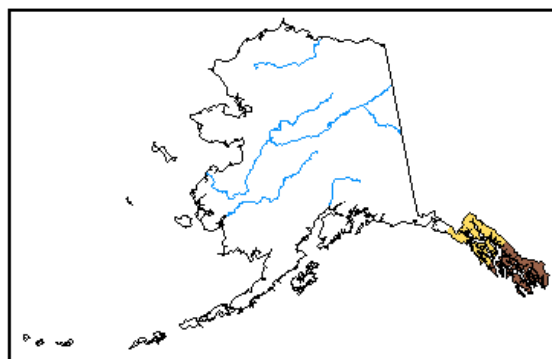
Valid for June 2019
Released May 31, 2019







Depicts large-scale trends based on subjectively derived probabilities guided by short- and long-range statistical and dynamical forecasts. Use caution for applications that can be affected by short lived events. "Ongoing" drought areas are based on the U.S. Drought Monitor areas (intensities of D1 to D4).

NOTE: The tan areas imply at least a 1-category improvement in the Drought Monitor intensity levels by the end of the period, although drought will remain. The green areas imply drought removal by the end of the period (D0 or none).

Author:
Yun Fan
NOAA/NWS/NCEP/Climate Prediction Center



-  Drought persists
-  Drought remains but improves
-  Drought removal likely
-  Drought development likely



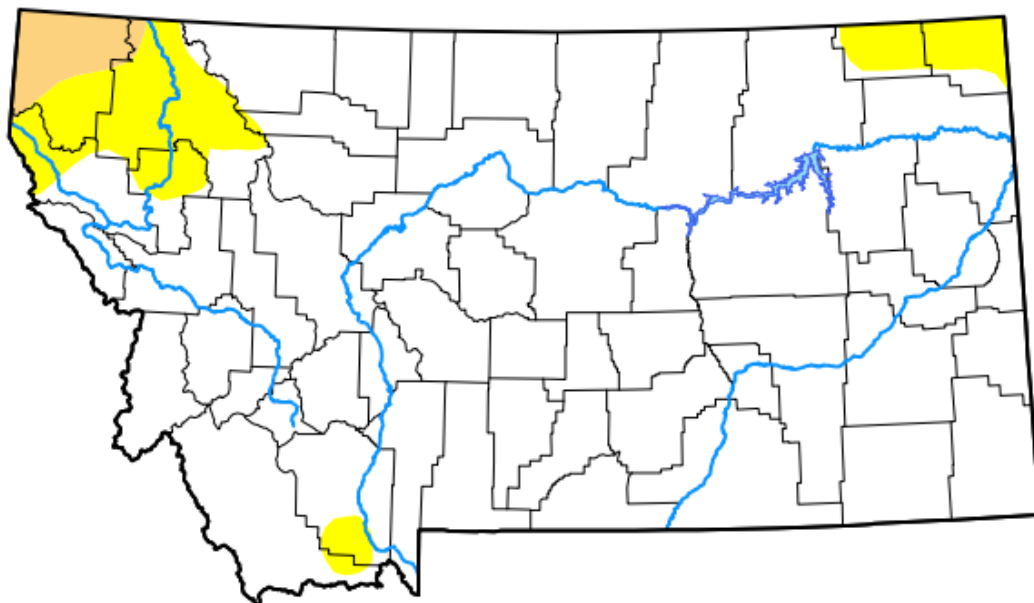
<http://go.usa.gov/3eZGd>

U.S. Drought Monitor Montana

June 4, 2019
(Released Thursday, Jun. 6, 2019)
Valid 8 a.m. EDT

Drought Conditions (Percent Area)

	None	D0-D4	D1-D4	D2-D4	D3-D4	D4
Current	90.98	9.02	1.75	0.00	0.00	0.00
Last Week <i>05-28-2019</i>	91.50	8.50	1.75	0.00	0.00	0.00
3 Months Ago <i>03-05-2019</i>	90.60	9.40	0.00	0.00	0.00	0.00
Start of Calendar Year <i>01-01-2019</i>	93.69	6.31	0.92	0.00	0.00	0.00
Start of Water Year <i>09-25-2018</i>	46.28	53.72	13.18	2.74	0.00	0.00
One Year Ago <i>06-05-2018</i>	88.05	11.95	0.00	0.00	0.00	0.00



Intensity:

None	D2 Severe Drought
D0 Abnormally Dry	D3 Extreme Drought
D1 Moderate Drought	D4 Exceptional Drought

The Drought Monitor focuses on broad-scale conditions. Local conditions may vary. See accompanying text summary for forecast statements.

Author:

David Simeral
Western Regional Climate Center



droughtmonitor.unl.edu



Questions/Comments?

<http://dnrc.mt.gov/divisions/water/drought-management>

Contact Information:

Michael Downey
mdowney2@mt.gov
406-444-9748