

Shodair by the Numbers

Child and Adolescent Psychiatry Program

Inpatient Psychiatric Services

Grassland Unit

- 20 beds
- Middle and High School age
- Average length of stay – 9 days
- 671 admissions in 2019

High Desert Unit

- 10 beds
- Elementary School age
- Average length of stay - 14.3 days
- 225 admissions in 2019

Psychiatric Residential Treatment Facility Services (PRTF)

Yellowstone Unit

- 20 beds
- Middle School age
- Average length of stay- 54.2 days
- 104 admissions in 2019

Glacier Unit

- 24 beds
- High School age
- Average length of stay- 45.3 days
- 149 admissions in 2019

School program accredited by the Northwestern Accreditation Commission

Therapeutic Group Homes

- Honeybee – 6 beds
- Bumblebee – 6 beds
- Ages 6-11

Day Treatment

- Therapeutic Learning Center provided on campus
- Serves up to 18 students
- Middle school day treatment at Helena Middle School serves 16 students
- Grades K-5th
- Operates 220 days per year

Outpatient Services

- Located on Shodair's campus
- Missoula & Butte outpatient opens in 2020. Patients seen statewide via telemedicine.
- Staffed with child and adolescent psychiatrists, psychiatric nurse practitioner, clinical psychology licensed therapists, and registered dietitian
- Free consultations with pediatric providers – Shodair Connect
- Total patient visits in 2019: 4,379

Patient Demographics

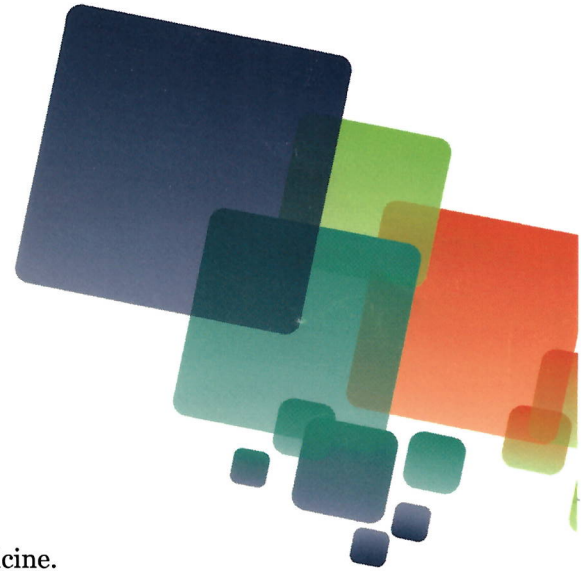
- 99% of patients served are from Montana
- 44 Montana Counties served
- 75% of patients served rely on Medicaid (30 cents reimbursed for every dollar of care provided)
- 17% of patients served are Native American

Commitment to Mission and Vision

- Shodair uses Sanctuary, a trauma informed model of care, to build a culture of safety where healing can occur.

Staffing

- Psychiatrist
- Therapist
- Speech Therapist
- Nutritionist - Dietitian
- RNs, LPNs
- Mental Health Technicians
- Psychiatric Nurse Practitioners
- Psychologist
- Music Therapist
- Recreation Therapist
- Spiritual Care
- Family Nurse Practitioners
- Genetic Counselors



Shodair by the Numbers

Medical Genetics

Clinical Genetics:

- Medical Genetics program started in 1975
- 800 patients seen per year
- 1500 miles traveled per month to outreach clinics
- Clinic locations include Billings, Kalispell, and Missoula, with Butte and Bozeman coming soon
- 3 genetics clinicians (1 MD and 2 genetics nurse practitioners)
- 3 genetic counselors
- 1 clinical psychologist
- 1 registered dietician
- Patient ages range from before birth to over 75 years old
- Telemedicine services are available directly to the patient's home

Laboratory Genetics:

- 2000 patient tests per year
- Nationally recognized program with samples from across the United States
- 48-hour turnaround time on STAT prenatal chromosome testing
- Testing ranges from visualizing chromosomes microscopically to sequencing all 20,000+ human genes in a single test

Metabolic Genetics:

- Shodair Genetics is the newborn screening follow-up provider for the State of Montana
- Patients with metabolic disorders are seen by a metabolic geneticist and supported by a genetic counselor and registered dietician