

# INTEGRATED BEHAVIORAL HEALTH ACROSS MONTANA

Integrated behavioral health (IBH), blends the delivery of behavioral health and medical healthcare services. Integration is approached in a variety of methods; collaboration of medical and behavioral health providers, co-location of services, or cross-departmental unification of clinic operations may be components of an IBH program.

The Montana Healthcare Foundation's (MTHCF) IBH Initiative has supported IBH development in **13 FQHCs**, **32 CAHs**, **6 hospitals**, and **3 Urban Indian Health Centers UIHCs**. MTHCF Meadowlark Initiative grantees include **1 FQHC**, **5 CAHs**, **8 hospitals**, and **1 tribal health department**.

## County Designation

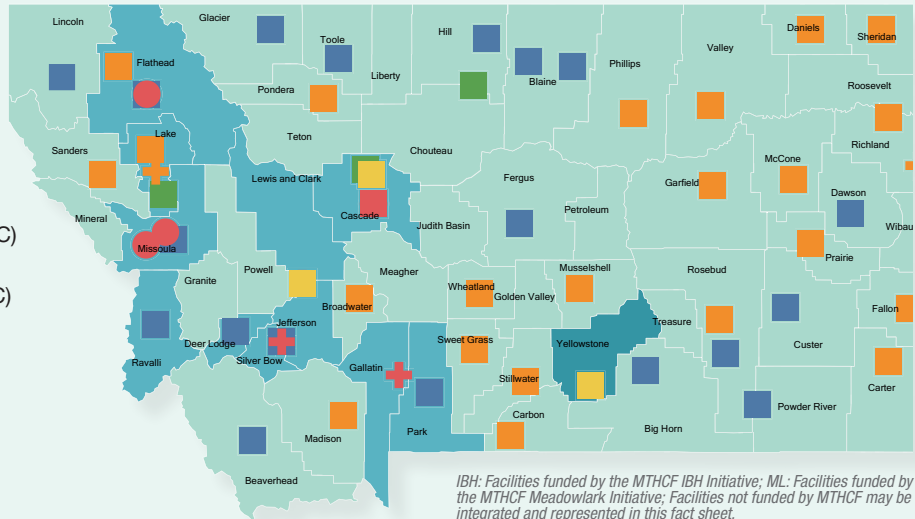
- Frontier
- Rural
- Urban

## Facility Type

- Urban Indian Health Center (UIHC)
- Hospital
- Community Health Center (FQHC)
- Critical Access Hospital (CAH)
- Tribal Health

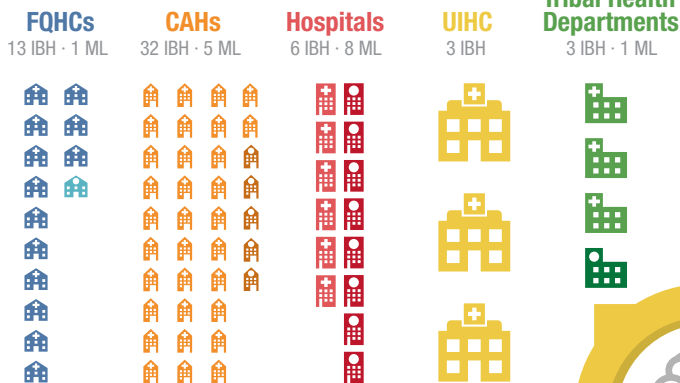
## IBH Initiative

- IBH
- IBH & Meadowlark
- Meadowlark (ML)



IBH: Facilities funded by the MTHCF IBH Initiative; ML: Facilities funded by the MTHCF Meadowlark Initiative; Facilities not funded by MTHCF may be integrated and represented in this fact sheet.

## IBH Programs by Facility Type



## IBH Workforce



### FQHCs

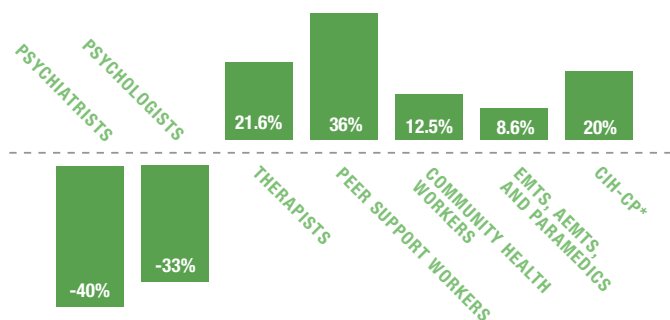
- Behavioral Health Director:** Psychologist, LCSW
- Therapist(s):** LCSW, LCPC
- Care Manager:** BS, MSW, BSW, HSD
- Psychiatric Provider:** Psychiatrist, Psychiatric Nurse Practitioner

### CAHs

- Project Lead:** RN, Clinic Director
- Therapist:** LCSW, LCPC
- Psychiatric Provider:** Remote consultations or referrals through network affiliations, neighboring CAH, or telepsychiatry

## Behavioral Health Workforce: Professionals and Paraprofessionals

Montana employment estimates 2017-2020



\*Community Integrated Health-Community Paramedics

## Training Programs

MORH/AHEC Training Programs Year 3 to Year 4

+124.5%

Management of Aggressive Behaviors (MOAB®)

+87.0%

Mental Health First Aid

+68.4%

Youth Mental Health First Aid

Applied Suicide Intervention Skills Training (ASIST)

-73.2%

