



MONTANA
UNIVERSITY SYSTEM

Perkins & Montana Career Pathways

Jacque Treaster, Director of Dual Enrollment and Career & Technical Education, OCHE



Carl D. Perkins Grant

- \$6,275,150 for the 2021-2022 Grant Cycle
- Perkins V State Plan was approved April 2020
 - State Plan Committee
 - Comprehensive Local Needs Assessment (CLNA)
 - Work-Based Learning
 - Dual Enrollment



Perkins V Priorities



Access to
Quality CTE



Seamless
Transitions



Industry
Engagement



Work-Based
Learning



Montana Career Pathways

16 Pathways

- Health Professions
- Information Technology
- STEM
- Education
- Hospitality
- Human Services
- Finance
- Business Management
- Marketing
- Welding and Fabrication
- Transportation
- Design and Construction
- Advanced Manufacturing
- Agriculture Mechanics and Construction
- Agriculture, Food, and Natural Resources
- Arts, A/V Technology, and Communication



Montana Career Pathways



MONTANA CAREER PATHWAYS Career and Technical Education



Area of Study: Health Science Education

Career Pathway: Health Professions

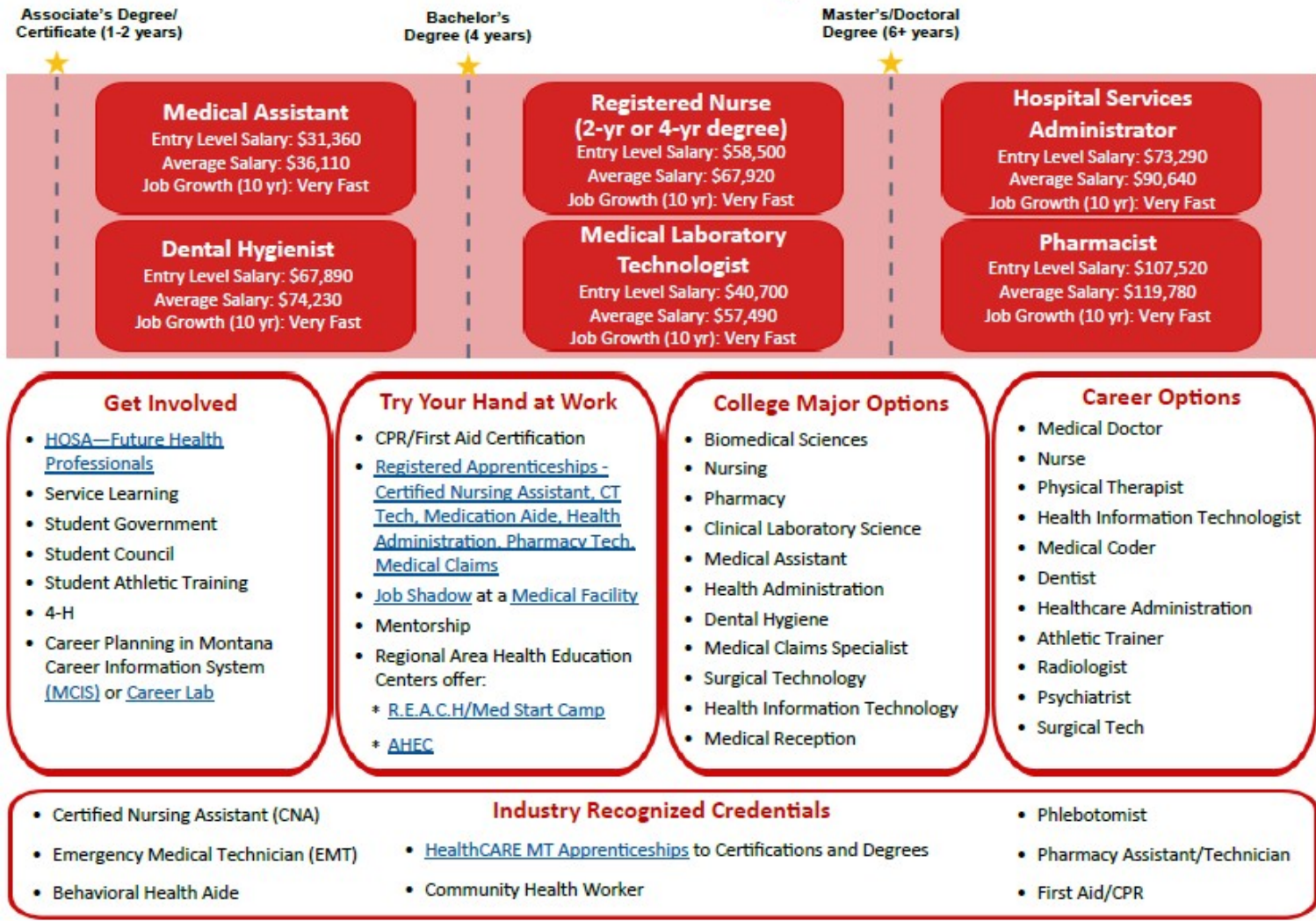
| | | | | | | | |
|---|--|--|-----------------------------------|---------------------------------|---|--|--|
| <p>Get the Facts The Health Professions Career Pathway prepares students for careers in the foundational skills to pursue careers in therapeutic services, diagnostic services, health informatics, support services, and biotechnology research and development.</p> <p>Workforce Trends The growth in health care employment has been steady. Rapid job growth in health care is expected to continue in the future as Montana's aging population continues to demand more health care services and as Montana's overall population grows.</p> <p>These trends present a great opportunity for students and job seekers to find employment in a high-demand and high-wage industry.</p> | CAREER AND TECHNICAL EDUCATION Recommended Pathway Courses | | | | <p>1.0 credit</p> <p>1.0 credit</p> <p>2.0 credits for completion</p> | <p>Careers in Healthcare are:</p> <ul style="list-style-type: none"> • High Skill; High Wage; In-Demand <p>Career Examples</p> <ul style="list-style-type: none"> • Athletic Trainer • Dentist • Healthcare Administrator • Health Information Officer • Medical Assistant • Medical Doctor • Medical Technologist • Nurse • Paramedic • Pharmacist • Physical Therapy Assistant • Psychiatrist • Radiologist • Registered Nurse • Surgical Technician <p>According to the Montana Department of Labor and Industry, the median hourly wage for occupations within Healthcare is \$60,000.</p> | |
| | Courses listed below provide a suggested sequence of courses for career and curriculum planning. Schools may offer additional courses beyond those listed within local Pathways. | | | | | | |
| | CLASS AVAILABILITY MAY VARY AT YOUR SCHOOL | | | | | | |
| | Course # | Foundation Courses (required) | Credit | | | | |
| | 14001 | Exploration of Healthcare Occupations | .5 | | | | |
| | 14002 | Health Care Occupations—Comprehensive | 1.0 | | | | |
| | 14251 | Health Science (Principles of Biomedical Science PLTW) | 1.0 | | | | |
| | 03053 | Anatomy & Physiology or PLTW Human Body Systems (03067) | .5 | | | | |
| | Elective Courses | | | | | | |
| | 14051 | Nursing (Nursing Assisting) | .50 | | | | |
| | 14055 | Emergency Medical Technology | .50 | | | | |
| | 14062 | Sports Medicine (Care of Athletes) | .50 | | | | |
| | 14153 | Medical Office Procedures | .50 | | | | |
| | 14099 | Therapeutic Services—Other (Med Prep III; Advanced Therapeutics) | .50 | | | | |
| | 14152 | Pharmacy Assisting | .50 | | | | |
| 14154 | Medical Terminology | .50 | | | | | |
| 14251 | Health Science | 1.0 | | | | | |
| 03068 | PLTW Medical Interventions | 1.0 | | | | | |
| 14252 | Biotechnology (Biomedical Innovations PLTW) | 1.0 | | | | | |
| 14998 | Health Care—Workplace Experience (pre-apprenticeships, internships) | .50 | | | | | |
| <p>Foundation courses taken beyond the required credits can be used as elective credit. Any High School CTE course(s) required for graduation may count towards Pathway completion Additional CTE Credits are recommended for Pathway completion</p> | | | | | | | |
| State Graduation Requirements | | Suggested High School Plan of Study | | | College and Career | | |
| High School Administrative Rules of Montana 10.55.905 | | 9th Grade Suggested | 10th Grade Suggested | 11th Grade Suggested | 12th Grade Suggested | | |
| English/Language Arts | 4.0 | English 9 1.0 | English 10 1.0 | English 11 1.0 | English 12 1.0 | | |
| Mathematics | 2.0 | Math 1.0 | Math 1.0 | Math 1.0 | Math 1.0 | | |
| Social Studies | 2.0 | Social Studies .50/1.0 | Social Studies .50/1.0 | U.S History 1.0 | U.S. Government 1.0 | | |
| Science | 2.0 | Earth Science 1.0 | Biology 1.0 | Science Elective* | | | |
| Health Enhancement | 1.0 | P.E./Health .50 | P.E./Health .50 | P.E./Health Electives* | | | |
| Arts | 1.0 | Arts Courses 1.0 | | | | | |
| Career and Technical Education | 1.0 | Pathway Foundation Course .50/1.0 | Pathway Foundation Course .50/1.0 | Pathway Elective Course .50/1.0 | Pathway Elective Course .50/1.0 | | |
| Work-Based Learning | Participation in a Pathway-related work-based learning experience | | | | | | |
| Career and Technical Student Organization | HOSA-Future Health Professionals | | | | | | |
| <ul style="list-style-type: none"> *Talk to your school counselor about requirements in the core curriculum. Core curriculum and elective requirements vary district to district. Many CTE courses may qualify for dual enrollment credit, which in some cases may earn up to 1.0 credit toward Pathway completion. Talk to your school counselor about availability. | | <ul style="list-style-type: none"> Dual enrollment course offerings vary by school and district. Many Montana post-secondary programs accept high school courses toward a two- and four-year degree through dual enrollment. Check with post-secondary campuses for details. | | | <p>For more information on salary projections, labor market demand, and training options, visit lmi.mt.gov.</p> | | |

www.mus.edu/mcp

Revised June 2020

Montana Career Pathways

Health Professions Career Pathway



Montana Career Pathways

Health Professions Career Pathway

Complete all High School Graduation Requirements — Click [Here](#) for a Fillable Course Planner

High School

Recommended High School Courses

Health Science Courses:

- Exploration of Health Careers
- Nursing Assistant
- Care of Athletes
- Health Care Occupations (also available on MT Digital Academy)
- EMT
- Healthcare Work Experience
- Project Lead the Way—Principles of Biomedical Science

Other Valuable Courses:

- Senior Year Math
- Psychology
- Chemistry
- Career Planning
- Biology
- Computer Tech Skills

Look for online high school courses here:
<http://montanadigitalacademy.org/>

Recommended Dual Enrollment

Health Science Courses:

- Medical Terminology (AHMS144)
- Health Professions (HTH101)
- EMT Training (ECP131)
- Emergency Medical Responder (ECP120)
- Electronic Health Records (varies)
- Basic Human Biology (BIOH104/105)
- Basic Anatomy (BIOH108)
- Human Form & Function (BIOH113)
- Medical Customer Care (varies)

Other Valuable Courses:

- Math: Math for Health Professions (M120), College Algebra (M121), Pre-Calculus (M151), Statistics (STAT 216)
- College Writing (WRIT101)
- Intro to Communication (COMX111 or COMX115)
- Introduction to Sociology (SOC101)

Look for online dual enrollment courses here:
<http://www.mus.edu/dualenroll/portal/index.html>

Postsecondary Programs in Montana

