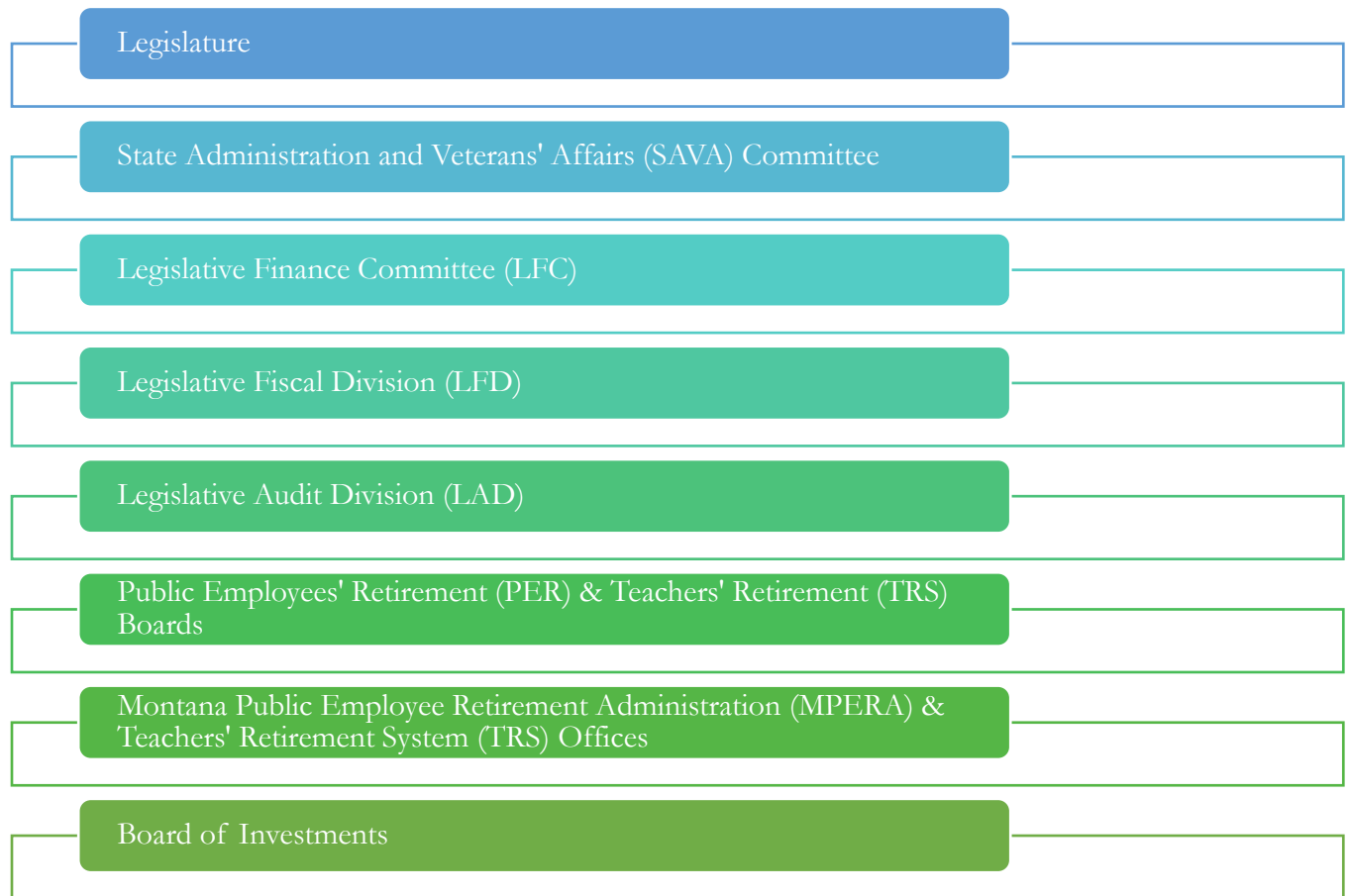


OVERSIGHT OF MONTANA'S PUBLIC EMPLOYEE PENSION SYSTEMS

OVERSIGHT & MANAGEMENT OF THE PENSION SYSTEMS



ROLE OF THE FULL LEGISLATURE

- Set benefit formulas, employer contribution rates, and employee contribution rates
- Conduct hearings, consider bills, and receive recommendations
- Set funding levels for the retirement systems

ROLE OF THE SAVA INTERIM COMMITTEE

- Consider the actuarial and fiscal soundness of the retirement systems
- Provide recommendations to the full Legislature and develop legislation
- Update and publish the Legislator's Guide to Montana's Public Employee Retirement Systems
- Receive reports and updates from the pension boards & offices, stakeholders, and the Board of Investments