

# Montana State Tribal Representatives

## *Indian Boarding School Sharing of Knowledge*

Whose History is it?



**Unlocking the  
Gates  
of  
historic Indian  
boarding  
schools and  
cemeteries  
(1880-1940)**

Otata'veenova'e  
(blue tipi woman)

Marsha F. Small  
Doctoral Student

Montana State University  
Buffalo Crossing Mountains





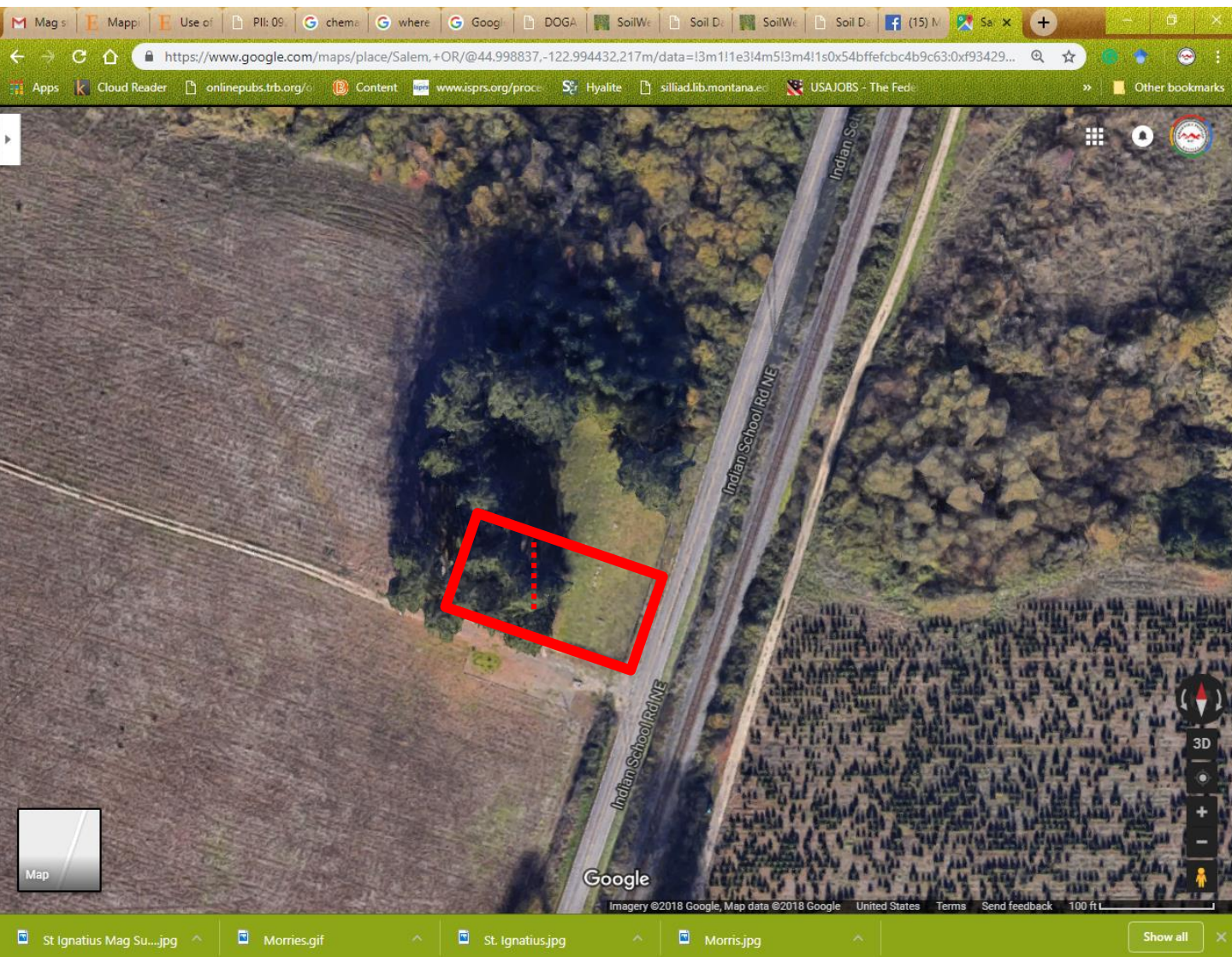
“He told me the handcuffs were used to take Indian kids to school and warned me never to play with them.” Shane Murray who donated the handcuffs to Haskell’s museum in 1989

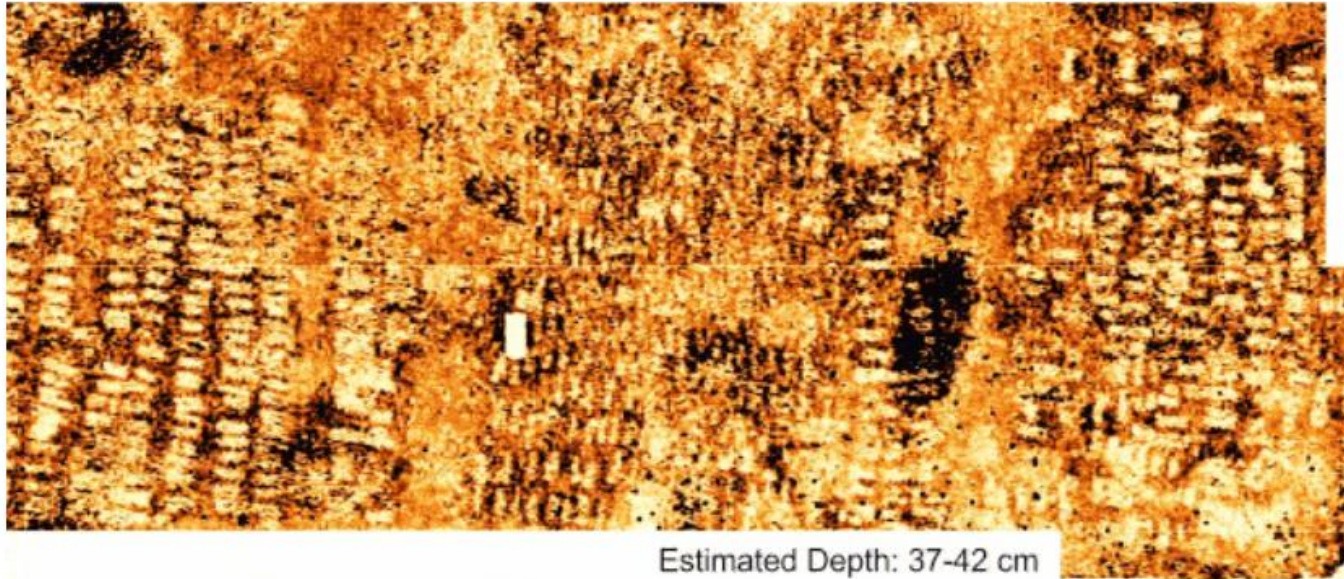


What are the solutions? What are the remedies? How do we move forward?



# Chemawa: Woodburn Soil Series





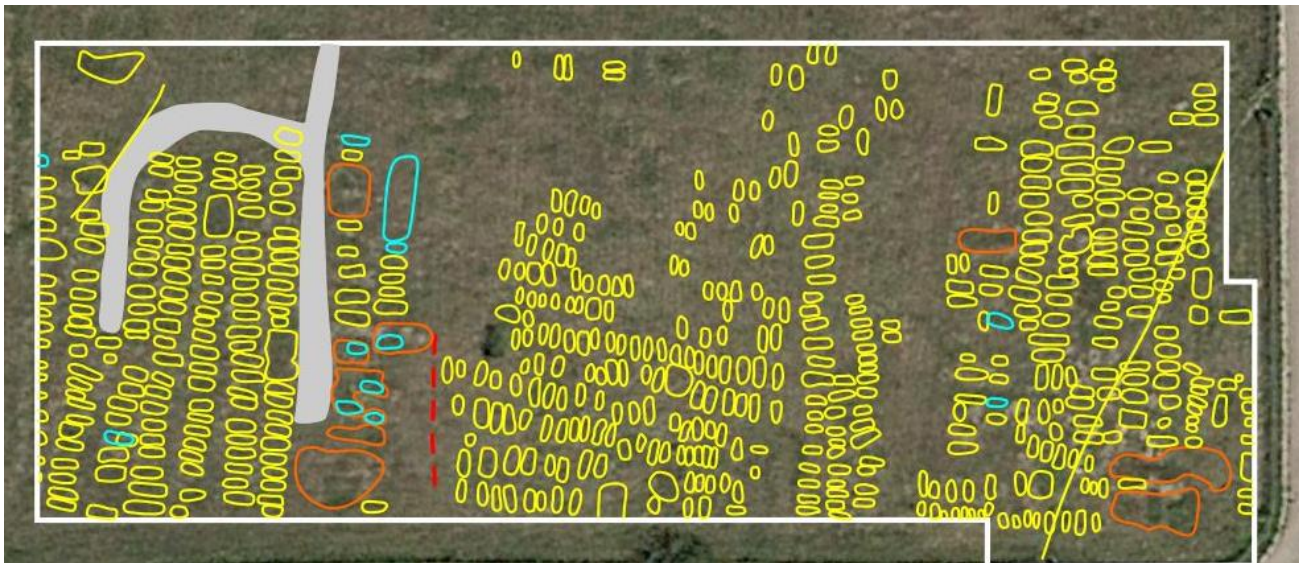
Estimated Depth: 37-42 cm

Marsha F. Small, M.A.  
Jarrod Burks, Ph.D.



# On-reservation GPR

What do you notice that is out of 'sort'?



Jarrold Burks, OVAI



ACKNOWLEDGEMENTS:

The Nations in Montana,  
The Ancestors,  
*And you for being here to  
listen and learn about the  
1000's of children that  
are still lost in Indian  
boarding school  
cemeteries and the  
atrocious policies that  
still permeate the well-  
being of all Native  
people.*

*Let's move toward a  
healing horizon, together.*

