

Erosion on the Flathead River

Kenneth Breidinger

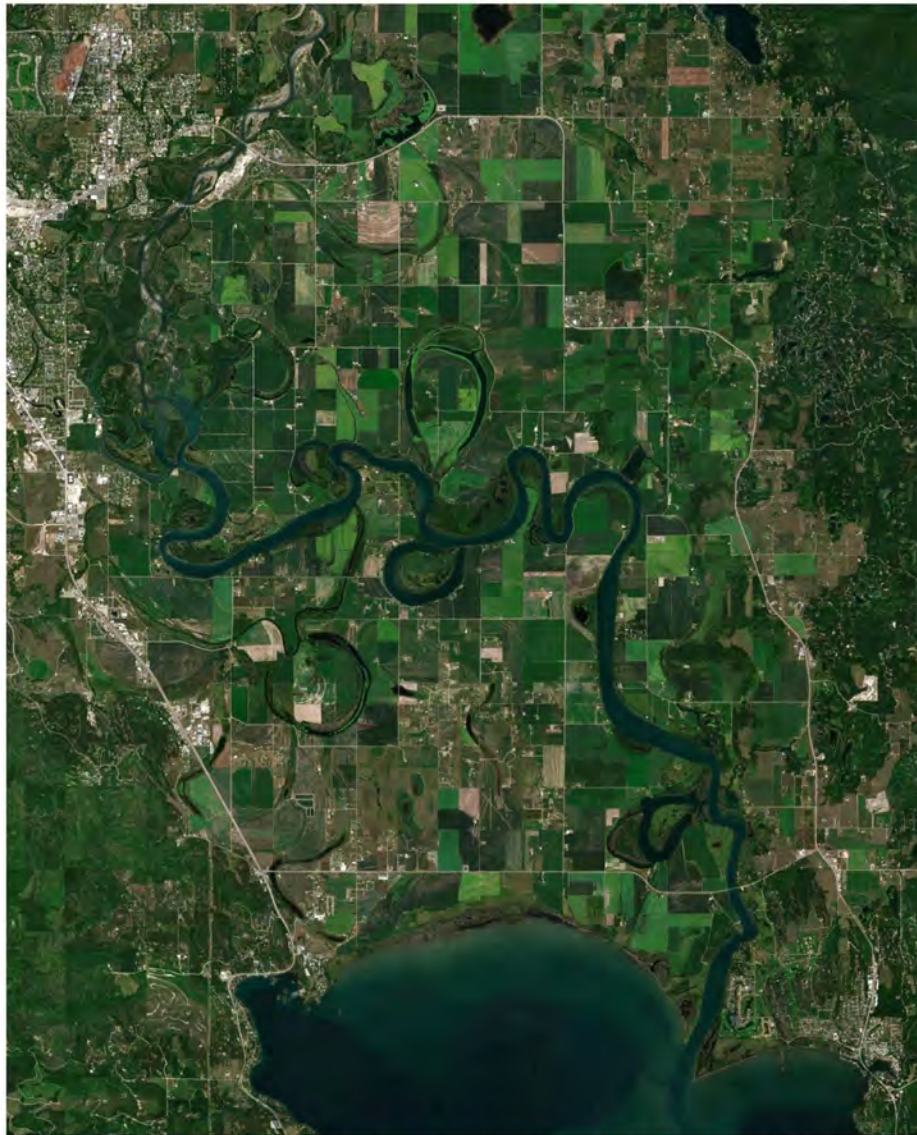
Flathead West Fisheries
Management Biologist




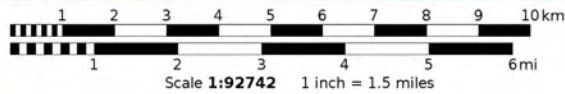
Description of the drainage

- The Flathead River drainage above Flathead Lake drains approximately 7,000 square miles.
- The Flathead River Valley between Old Steel Bridge and Flathead Lake is comprised of alluvial sediments.
- Twenty two river miles upstream of the lake are inundated by the Seli's Ksanka Qlispe' Dam at full pool.





Mercator Projection
WGS84
USNG Zone 11UQP
 CALTOPO

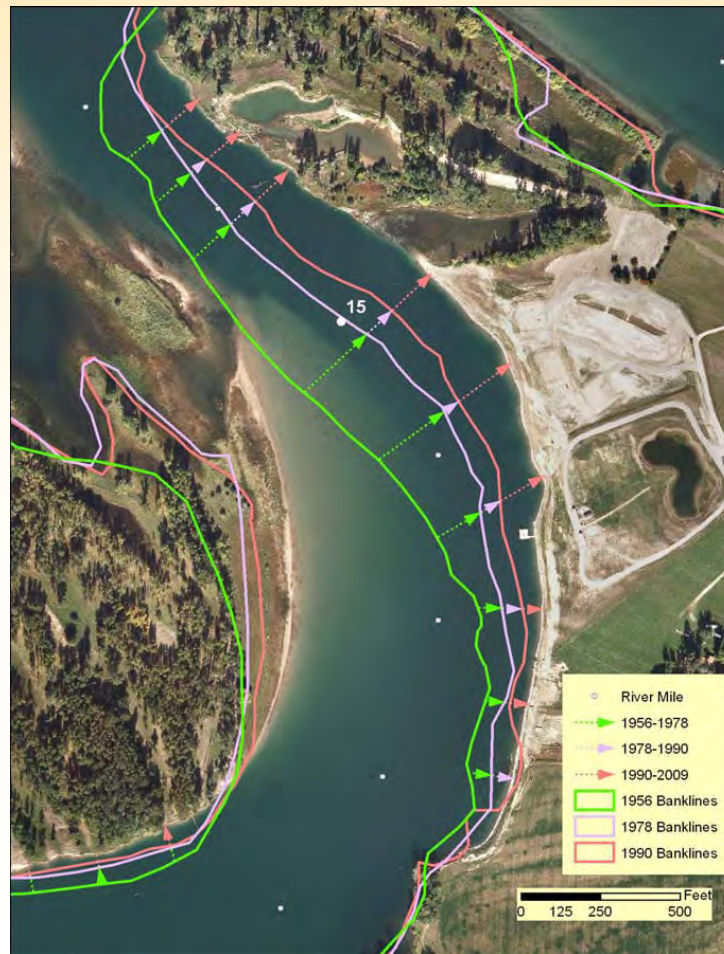


Causes of Erosion

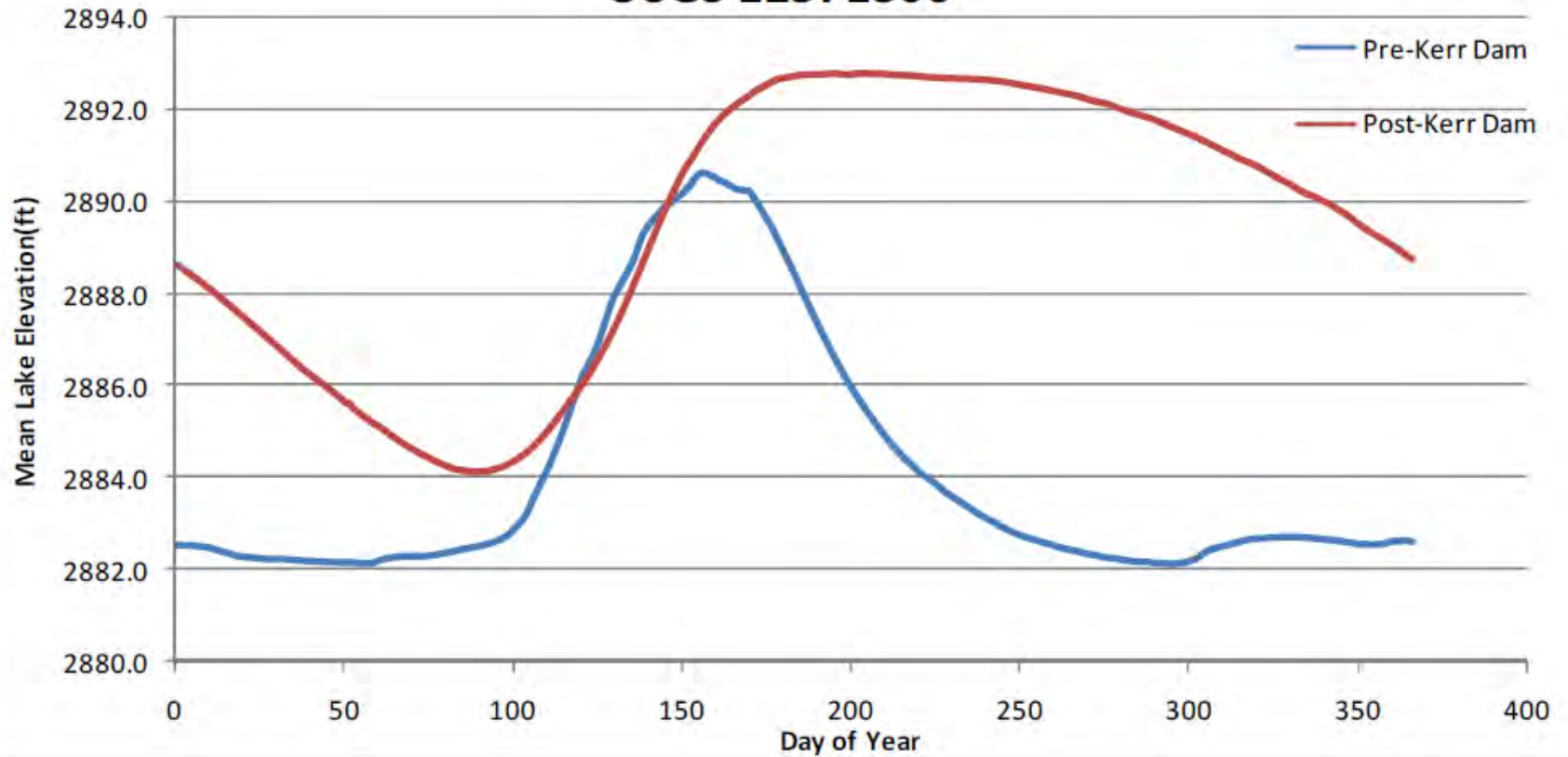
- Naturally occurring.
- Stream bank development and grazing.
- Streambank saturation.
- Erosion control structures.
- Wakes from boat traffic and naturally occurring waves.
- Inundation from the Salish, Kootenai, Pend d'Oreille Dam.



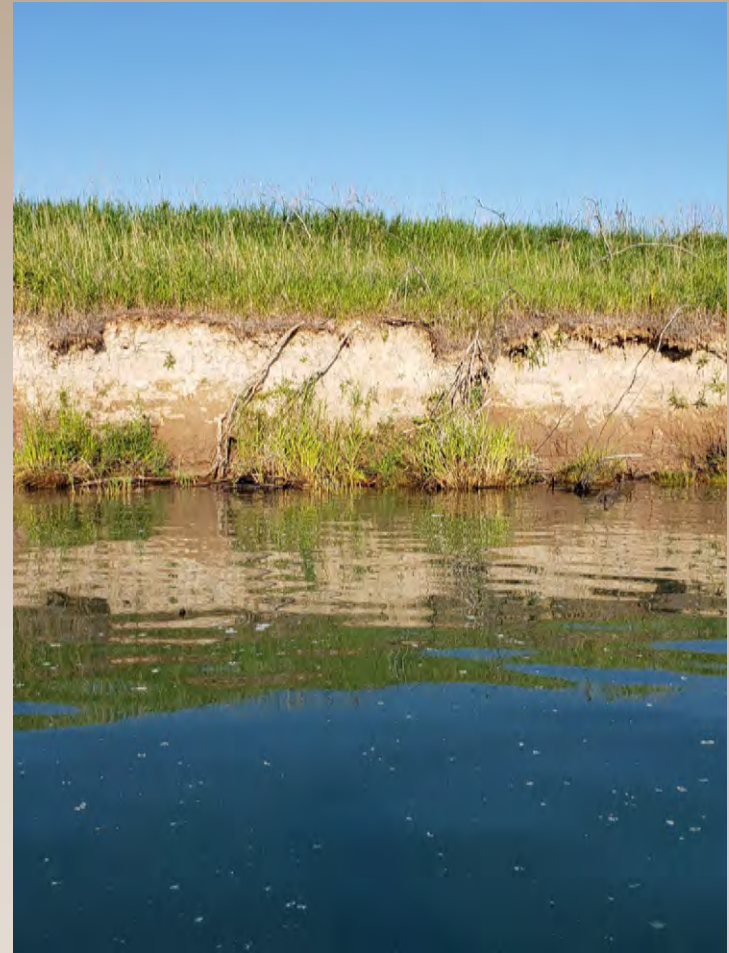
Erosion Rates on the Flathead River



Flathead Lake at Somers USGS 12371500



Erosion on the Lower Flathead River













Boat wakes, turbidity and erosion

