

**DISCUSSION**

Define successful outcomes

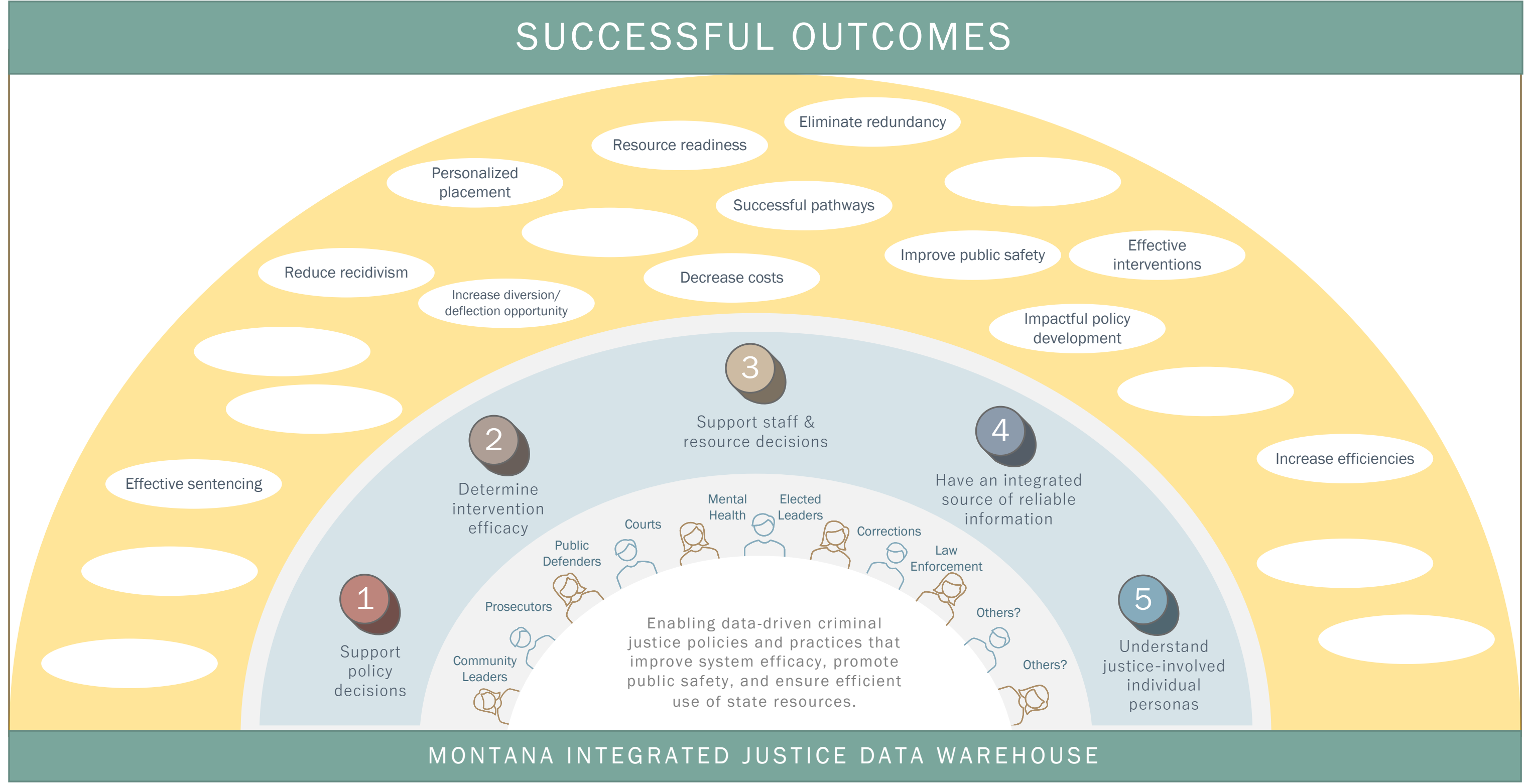
Direct/Indirect stakeholders (Public? Justice-involved individuals?)

Discuss what the justice data warehouse will not do (e.g., sharing of identifiable info)

---

**OUTCOME PROMPTS**

- Partner
- Improve
- Advance
- Grow
- Collaborate
- Share



**NEXT STEPS**

- Justice Lifecycle Decision Tree mapping process
- Communication Plan Status update info
- Current state data inventory
- Operations impacts

---

**OUT OF SCOPE**

- 
- 
-