

COMMUNITY SCHOOL PILLARS

INTEGRATED
STUDENT SUPPORTS

EXPANDED
AND ENRICHED
LEARNING TIME

ACTIVE FAMILY
AND COMMUNITY
ENGAGEMENT

COLLABORATIVE
LEADERSHIP AND
PRACTICES

STEPS to SUCCESS:

1

High Quality Early Childhood

2

High Quality School
Day Experiences

3

Whole Child Wellness

4

Family and Community
Empowerment

5

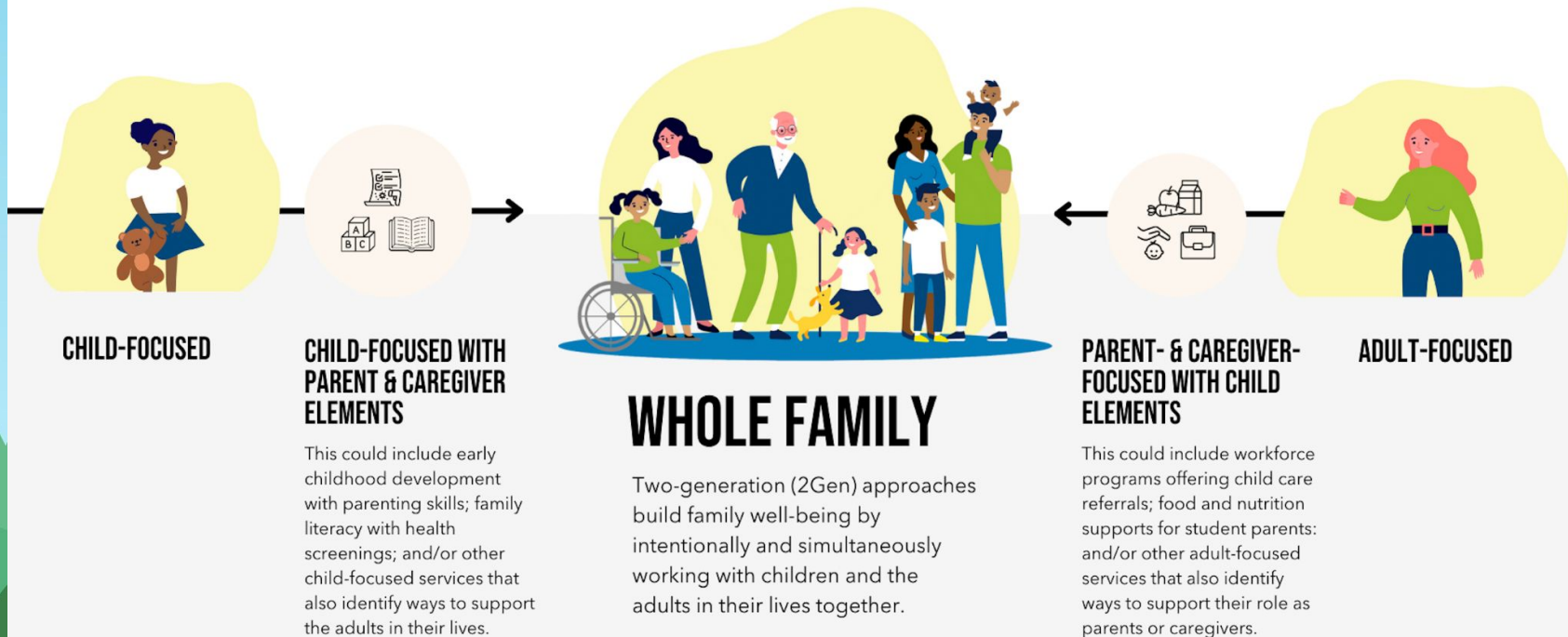
Supported Transitions

GOAL: Uniting families, educators, and community partners in providing high quality academic, enrichment, and health equity for students to succeed from cradle to career.

MISSOULA COMMUNITY SCHOOLS

Strong Schools. Strong Families. Strong Community.

TWO-GENERATION (#2GEN) APPROACHES CENTER WHOLE FAMILIES



MISSOULA COMMUNITY SCHOOLS

Strong Schools. Strong Families. Strong Community.

Goal: Uniting families, educators and community partners in providing high quality academic, enrichment and health equity for students to succeed from cradle to career.

Theory of Action: By uniting the Missoula Community to support Missoula Community Schools...

**Students will have access to high quality school and community experiences that will lead to college and/or career readiness and*

**Families, educators and community partners will have sustainable systems of support therefore improving the health and wellness of the Missoula Community.*

Steps to Success

**High Quality
Early Childhood**

**High Quality
School Day
Experiences**

**Whole Child
Wellness**

**Family and
Community
Empowerment**

**Supported Key
Transitions**

Actions

Increase access to 0-5 programming and **family engagement** in FSCS neighborhoods

Implement high quality **learning and enrichment** experiences throughout the school day

Provide **expanded and enriched learning** experiences, **integrated student supports**, and increased access to **health and wellness services** for students and families at all FSCS locations

Provide opportunities for **collaborative family and community leadership** at each site

Implement Bridges Transition program to **empower families** and **support students** during critical school transitions

Outputs

*Add Pre-K classrooms
*KITS Intervention

*Teacher Clarity and Visible Learning Implementation
*Add School Coordinators to all FSCS sites

*Extended Day Programs
*Increased Health and Wellness services
*Coordinated Wraparound supports

*Family and Community Advisory Boards at each site
*Family Learning Calendars

*Implement programming at critical grade transitions to promote school connections and support career and college readiness

Short Term Outcomes

Increased school readiness on KEA assessment

*Increased Proficiency in ELA and Math
*Improved graduation rates for FSCS alumni

*Improved School Attendance
*Increased access to wraparound services

*Increased family involvement
*Increased number of community partnerships

*Families empowered to support transitions
*Increased opportunities for career and college exploration

Long Term Outcome

**MCPS
students are well
prepared for
college,
careers, and
citizenship**



Forward Thinking, High Achieving.