

# 2023 – 2024 MUS 2-Year Education Key Initiatives

**2** Industry supported and aligned training

**MUS  
SPRINT DEGREES**



**ACCELERATE MT**



**3** Infrastructure for high-quality & flexible pathways

**1** The high school to college to career pipeline

**ONE  
TWO  
FREE.**



## 2023 – 2024 MUS 2-Year Education Key Initiatives

**2** Industry supported and aligned training

**MUS**  
**SPRINT DEGREES**



**ONE**  
**TWO**  
**FREE.**

**1** The high school to college to career pipeline



**ACCELERATE** 



**3** Infrastructure for high-quality & flexible pathways

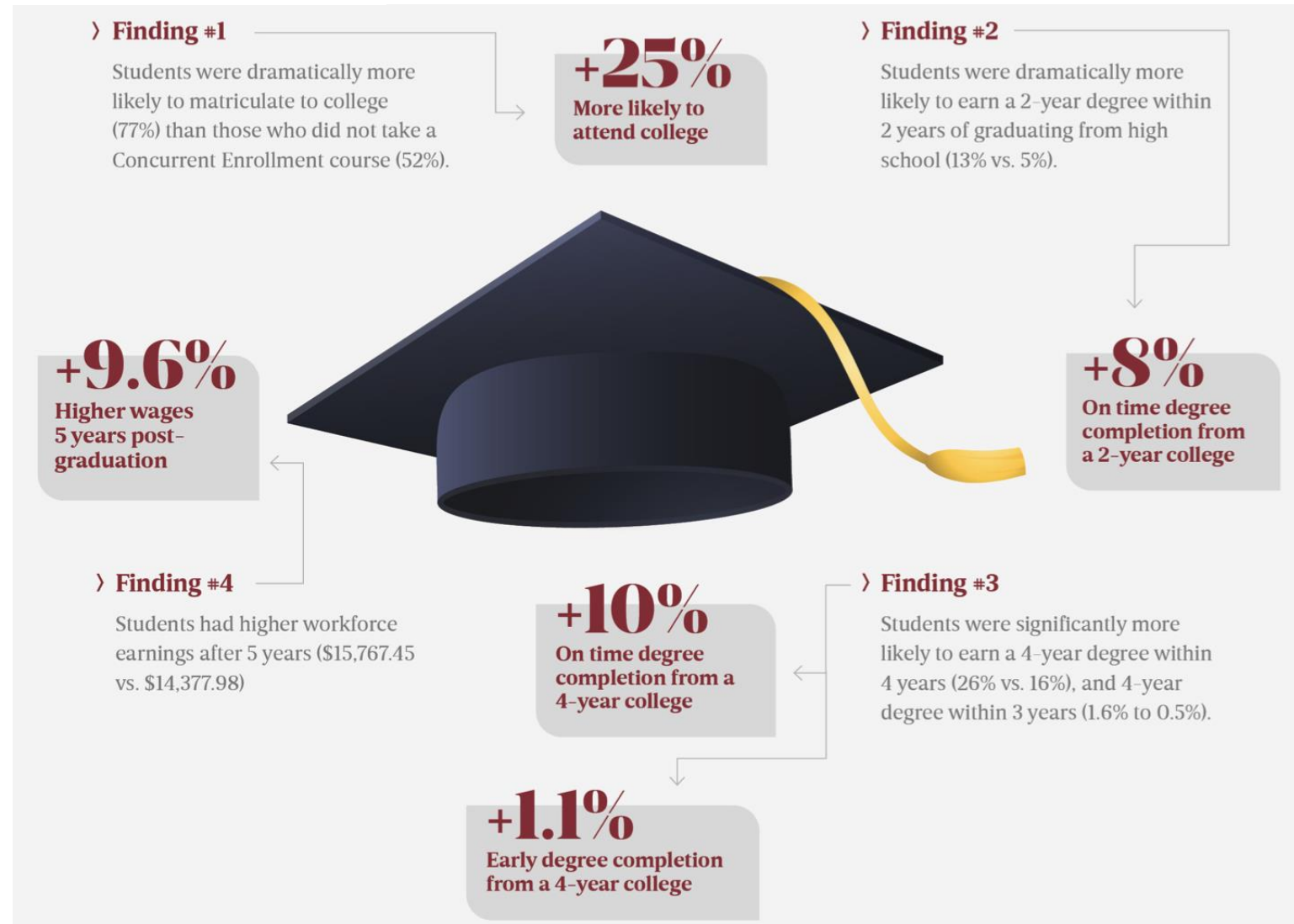


# Does Concurrent Enrollment Improve College Access, Success, Time-To-Degree and Earnings?

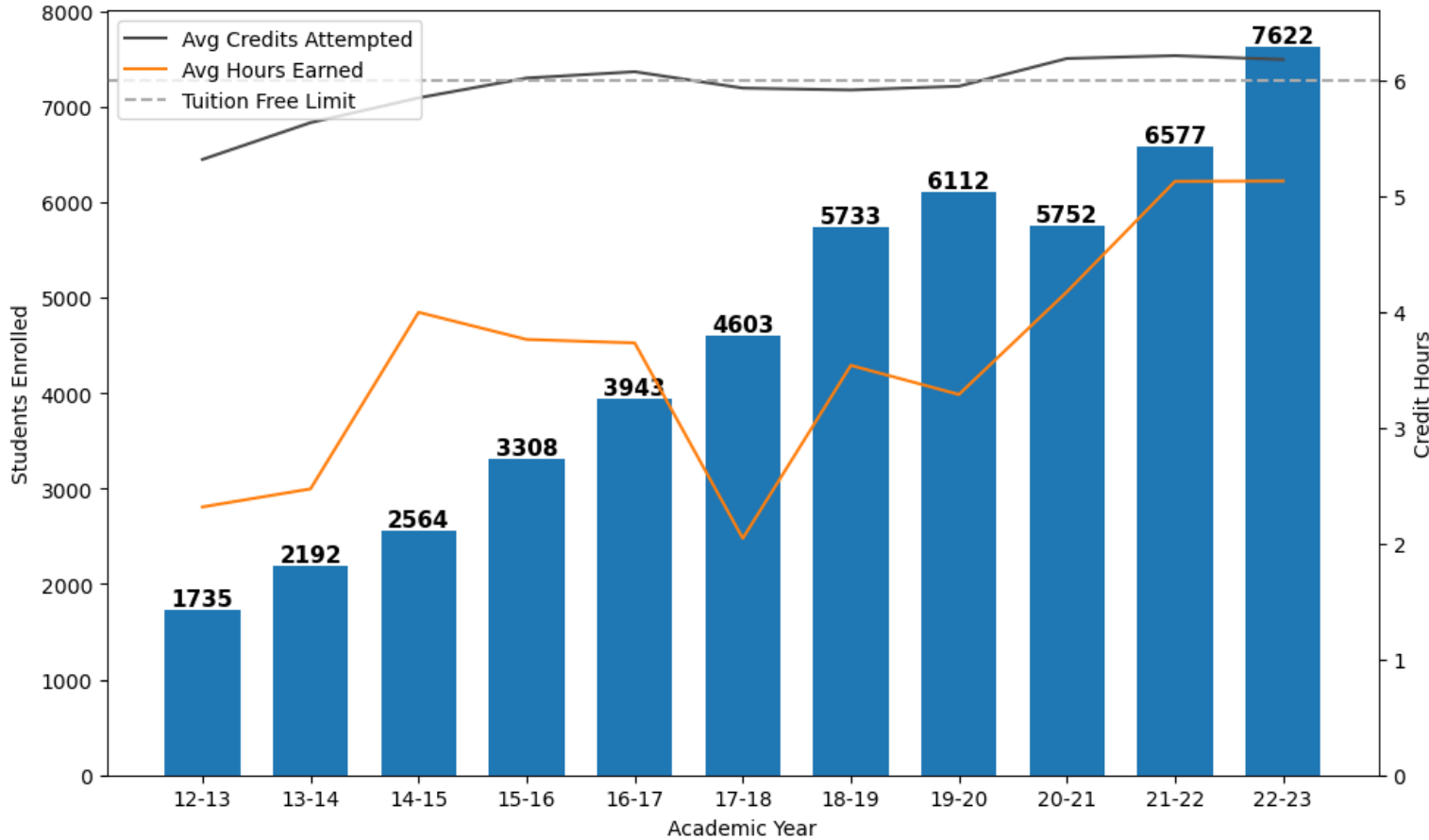


Evaluation of five statistically-matched cohorts of CO 11<sup>th</sup> grade students found dual enrollment was associated with:

- College matriculation
- On-time college graduation
- Higher earnings



# Historic Dual Enrollment Growth in Montana



**16.4% enrollment growth per year**  
**15.9% increase from 2021-22**

## 2014

- ~ **1 in 10** MT high school students participate in dual enrollment.
- DE makes up **14%** of 2-year Spring headcount enrollment.

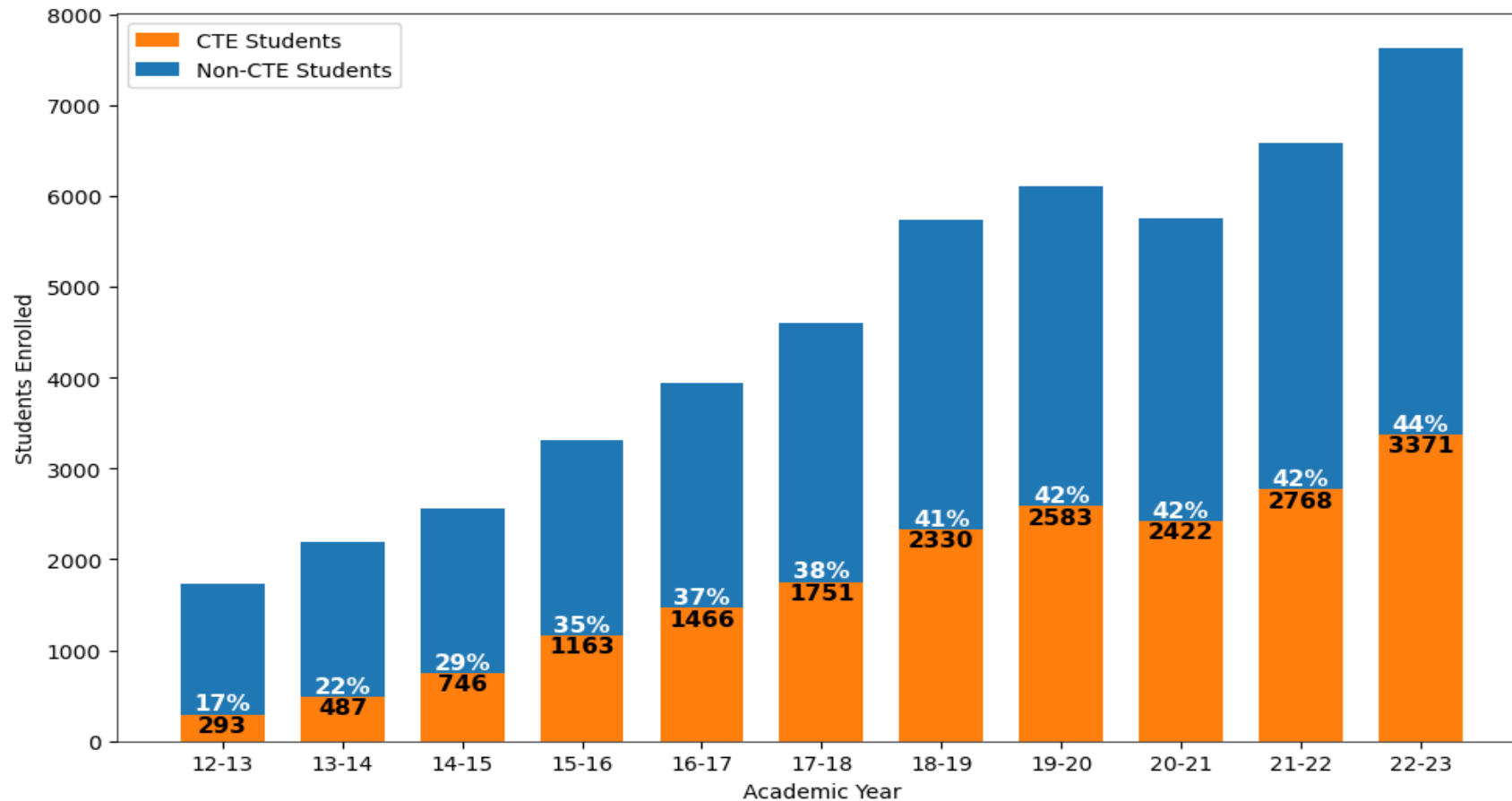
## 2018

**ONE  
TWO  
FREE.**  
ONE SYSTEM.  
TWO COURSES.  
FREE ACCESS TO  
HIGHER EDUCATION.

## 2023

- ~ **1 in 3** MT high school students participate in dual enrollment.
- DE makes up **46%** of 2-year Spring headcount enrollment.

# CTE makes up an increasing share of Montana's Dual Enrollment



**+21.8% (603 students) in CTE enrollment from 2021-22**

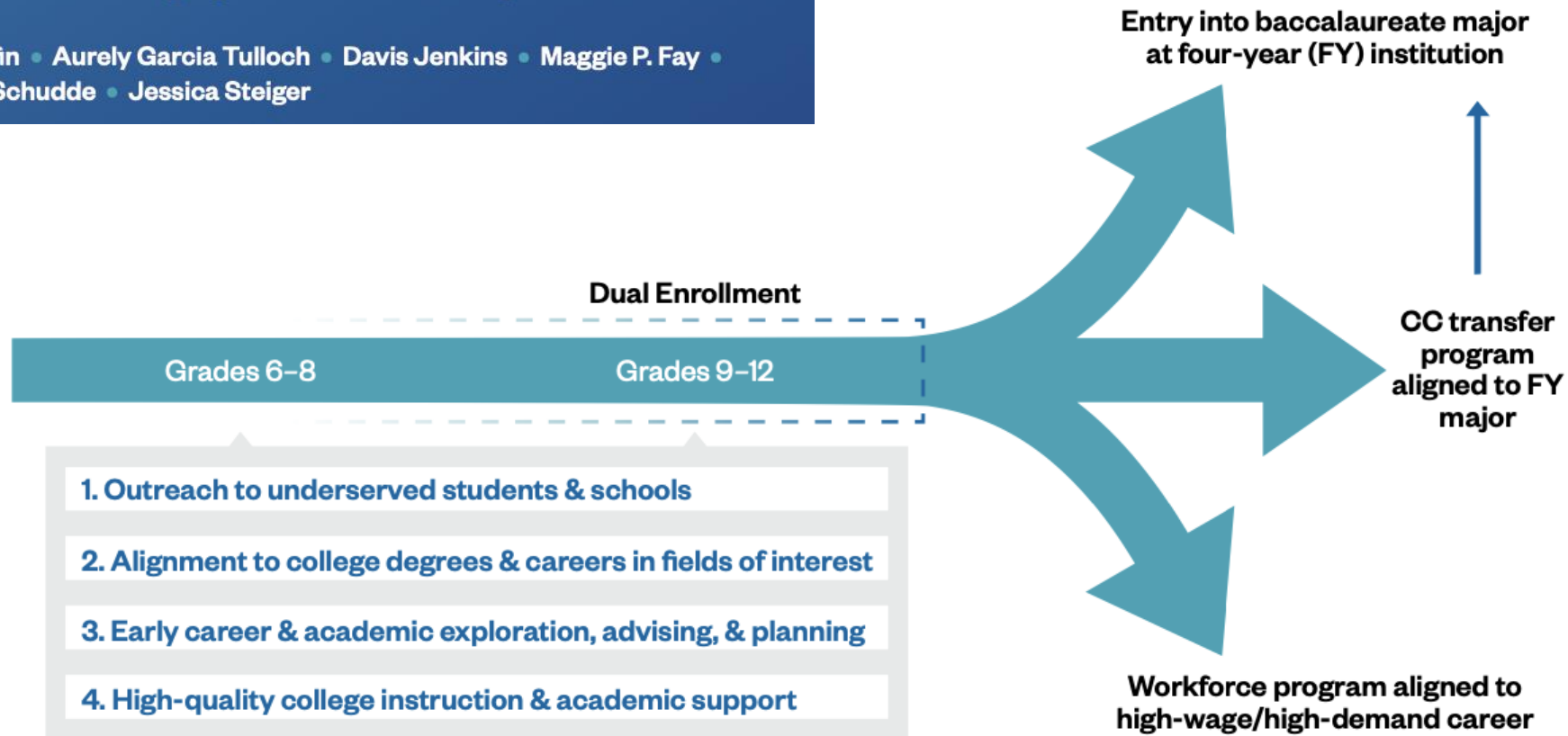


# Redesigning Dual Enrollment as a Purposeful Pathway to College and Career Opportunity

John Fink • Sarah Griffin • Aurely Garcia Tulloch • Davis Jenkins • Maggie P. Fay • Cat Ramirez • Lauren Schudde • Jessica Steiger

**CCRC** COMMUNITY COLLEGE  
RESEARCH CENTER

TEACHERS COLLEGE, COLUMBIA UNIVERSITY



## Montana's Future at Work



Statewide grant program to create responsive CTE credentials, completed during high school in high need, competitive wage, areas.

CMA | Cybersecurity | Construction | CDL | EMT | CNA | HVAC

Embedded map for Frenchtown HS students to complete 30-37 hours of dual credit prior to graduation.

Includes completing a general education certificate, which is transferrable across the MUS.

## The Bronc Fast Track



## Opportunity Realized

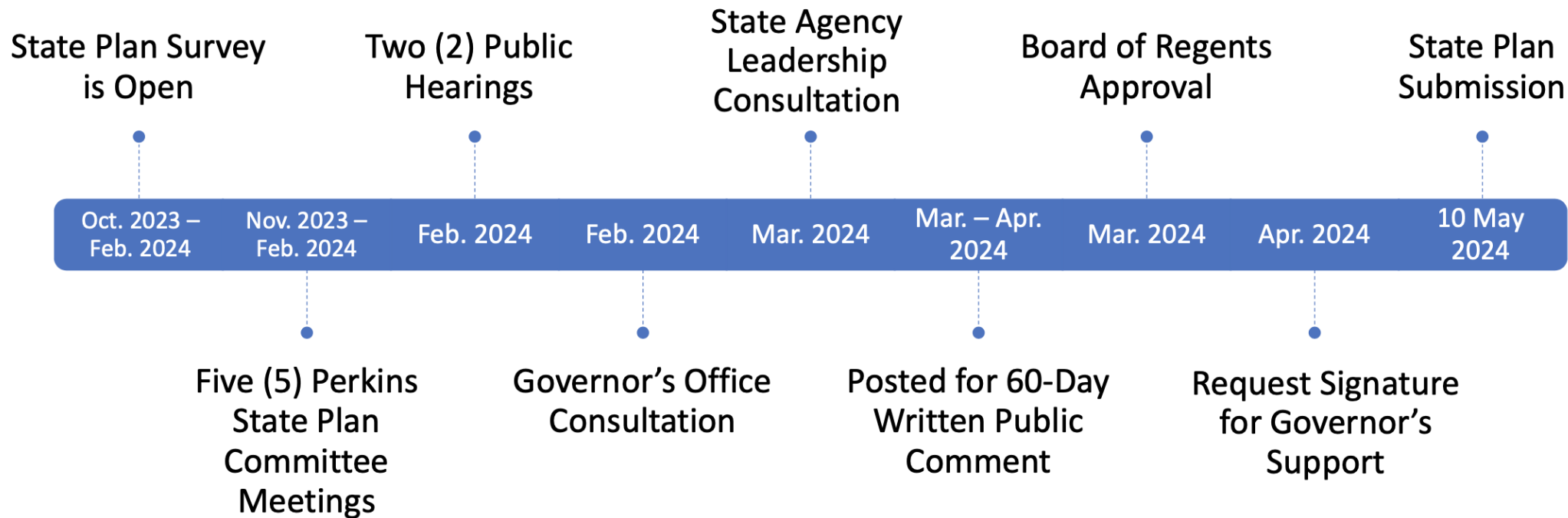


1-credit, online course to assist high school juniors with career and college exploration. Carries college credit.

Now offered at 31 partner school districts across eastern Montana.

# Montana's Perkins State Plan Revision

- Perkins provides \$6.7m annually to support secondary and post-secondary institution's CTE programs
- The State Plan describes how OCHE and OPI collaborate on CTE program development and establishes how we measure our success





## State Plan Committee

### Membership

- **Paddy Fleming**, Director Montana Manufacturing Extension Center
- **Lily Apedaile**, Director, Office of Health Research and Partnership, University of Montana
- **Dan Durglo**, Director of Operations, S&K Technologies and Chair, School District #30 Title VI Indian Education Committee
- **James Easton**, Montana Chamber Foundation Workforce Specialist
- **Bill Ryan**, Education Coordinator, Dick Anderson Construction
- **Mary Heller**, Montana Ready Coordinator, Office of Public Instruction

# Public Comment Now Open!

<https://mus.edu/Perkins/public-comment.html>



Carl D. Perkins

General Information

Current Awards

Applications, Templates & Forms

Civil Rights & Compliance

Nontraditional Careers

Special Populations

Resources & State Reports

College Access Programs

Dual Enrollment

Educational Talent Search

Gear Up

Montana Career Pathways

Perkins

Prior Learning Assessment

Two-Year Education Home

Montana University System / Perkins / Perkins Public Comment

## Montana Perkins State Plan

### Public Comment

The Perkins State Plan is undergoing its four-year revision for grant years 2024 through 2027.

- [2024-2027 Montana Perkins V State Plan \(DRAFT\)](#)
- [2024 Montana Perkins V State Plan Executive Summary](#)

**The 60-day written public comment period for the the 2024 Montana Perkins State Plan is currently open. The public comment period opened March 1, 2024 and will close April 30th, 2024. Please use the form below to submit your comments, or send your comments via email to Jacque Treaster, Director of Dual Enrollment and Career & Technical Education, [jtreaster@montana.edu](mailto:jtreaster@montana.edu).**

★ denotes required fields.

#### Comment

Name ★

Email Address ★

Comment ★