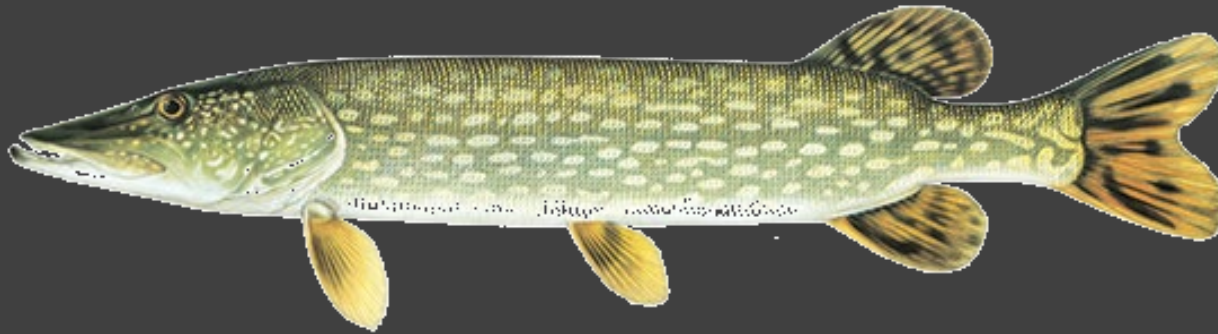


# Clark Fork River Fish Consumption Advisories



Trevor Selch  
Fisheries Pollution Control Biologist



# Fish Consumption Guidance

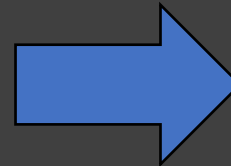
United States  
Environmental Protection  
Agency

Office of Water  
(4305)

EPA 823-B-00-008  
November 2000

## **Guidance for Assessing Chemical Contaminant Data for Use in Fish Advisories**

**Volume 2  
Risk Assessment and Fish  
Consumption Limits  
Third Edition**



## **Montana Sport Fish Consumption Guidelines**



**What you need to  
know about Mercury,  
PCBs, and other  
contaminants when  
fishing in Montana.**

This guide provides information about how to enjoy healthy meals from wild fish caught in Montana. It provides specific scientific data about the water bodies which have been tested, plus more general information for areas that have not yet been tested.

**DEQ**  
Montana Department  
of Environmental Quality

**MONTANA  
DPHHS**  
Healthy People. Healthy Communities.  
Montana @ 100



- For information on collection and laboratory testing of fish from Montana waters, call MT Fish, Wildlife and Parks at 406-444-2449.
- For information on the health risks of eating fish, call MT Health & Human Services 406-444-2837 or email: HHSFCS@mt.gov.
- This on-line version of the brochure will be updated as new data is gathered: [fwp.mt.gov/fishing](http://fwp.mt.gov/fishing)

# Fish TEQ fillet sampling

- EPA 2018 and 2019
- BERA and HHRA



## Toxicity Equivalence Factors

Dioxins	NATO, 1989	WHO, 2005
2,3,7,8-TCDD	1	1
1,2,3,7,8-PeCDD	0.5	1
1,2,3,4,7,8-HxCDD	0.1	0.1
1,2,3,6,7,8-HxCDD	0.1	0.1
1,2,3,7,8,9-HxCDD	0.1	0.1
1,2,3,4,6,7,8-HpCDD	0.01	0.01
OCDD	0.001	0.0003
<b>Furans</b>		
2,3,7,8-TCDF	0.1	0.1
1,2,3,7,8-PeCDF	0.05	0.03
2,3,4,7,8-PeCDF	0.5	0.3
1,2,3,4,7,8-HxCDF	0.1	0.1
1,2,3,6,7,8-HxCDF	0.1	0.1
2,3,4,6,7,8-HxCDF	0.1	0.1
1,2,3,7,8,9-HxCDF	0.1	0.1
1,2,3,4,6,7,8-HpCDF	0.01	0.01
1,2,3,4,7,8,9-HpCDF	0.01	0.01
OCDF	0.001	0.0003
<b>Co-Planar PCBs</b>		
3,3',4,4'-TCB (77)		0.0001
3,4,4',5-TCB (81)		0.0003
3,3',4,4',5-PeCB (126)		0.1
2,3,3',4,4'-PeCB (105)		0.00003
2,3,4,4',5-PeCB (114)		0.00003
2,3',4,4',5-PeCB (118)		0.00003
2',3,4,4',5-PeCB (123)		0.00003
2,3,3',4,4',5-HxCB (156)		0.00003
2,3,3',4,4',5'-HxCB (157)		0.00003
2,3',4,4',5,5'-HxCB (167)		0.00003
3,3',4,4',5,5'-HxCB (169)		0.03
2,3,3',4,4',5,5'-HpCB (189)		0.00003

MEN	80 kg; 8 oz	
D-F (ng/kg ww)		Advisory
	<0.052	U
0.052	0.057	12
0.057	0.062	11
0.062	0.068	10
0.068	0.076	9
0.076	0.085	8
0.085	0.098	7
0.098	0.114	6
0.114	0.137	5
0.137	0.171	4
0.171	0.229	3
0.229	0.343	2
0.343	0.687	1
	>0.687	AVOID
Children	14.5 kg; 3oz	
D-F (ng/kg ww)		Advisory
	<0.025	U
0.025	0.027	12
0.027	0.030	11
0.030	0.033	10
0.033	0.036	9
0.036	0.041	8
0.041	0.047	7
0.047	0.055	6
0.055	0.066	5
0.066	0.083	4
0.083	0.110	3
0.110	0.166	2
0.166	0.332	1
	>0.332	AVOID



RB	Adults	W&C
10-14	<b>Avoid</b>	<b>Avoid</b>
14-18	<b>Avoid</b>	<b>Avoid</b>

RB	Adults	W&C
10-14	<b>Avoid</b>	<b>Avoid</b>
14-18	1	<b>Avoid</b>

RB	Adults	W&C
10-14	<b>Avoid</b>	<b>Avoid</b>
14-18	<b>Avoid</b>	<b>Avoid</b>

---

RB	Adults	W&C
10-14	U	10

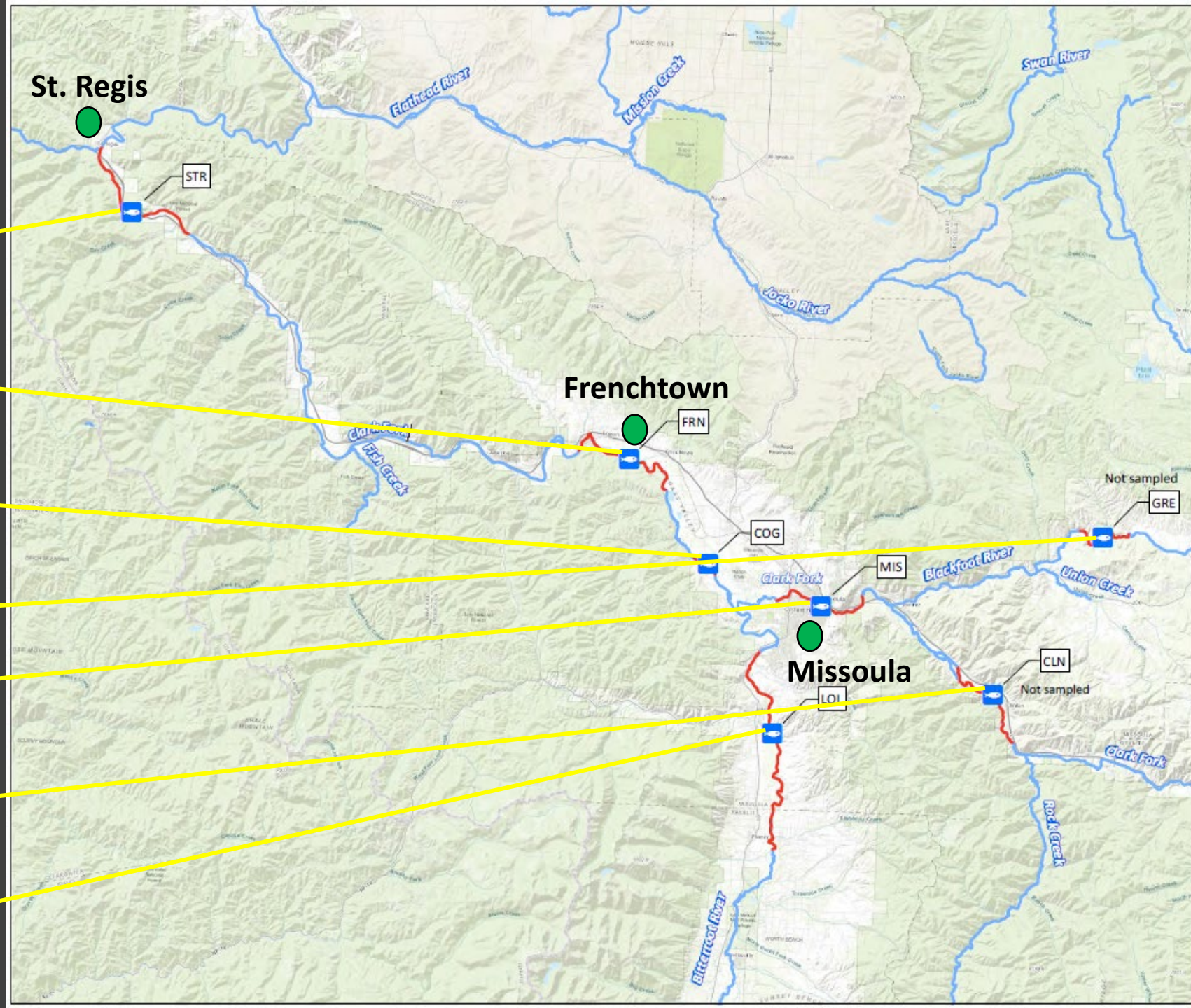
RB	Adults	W&C
10-14	1	<b>Avoid</b>
14-18	2	1

RB	Adults	W&C
10-14	5	2
14-18	12	6

RB	Adults	W&C
10-14	7	3
14-18	2	1



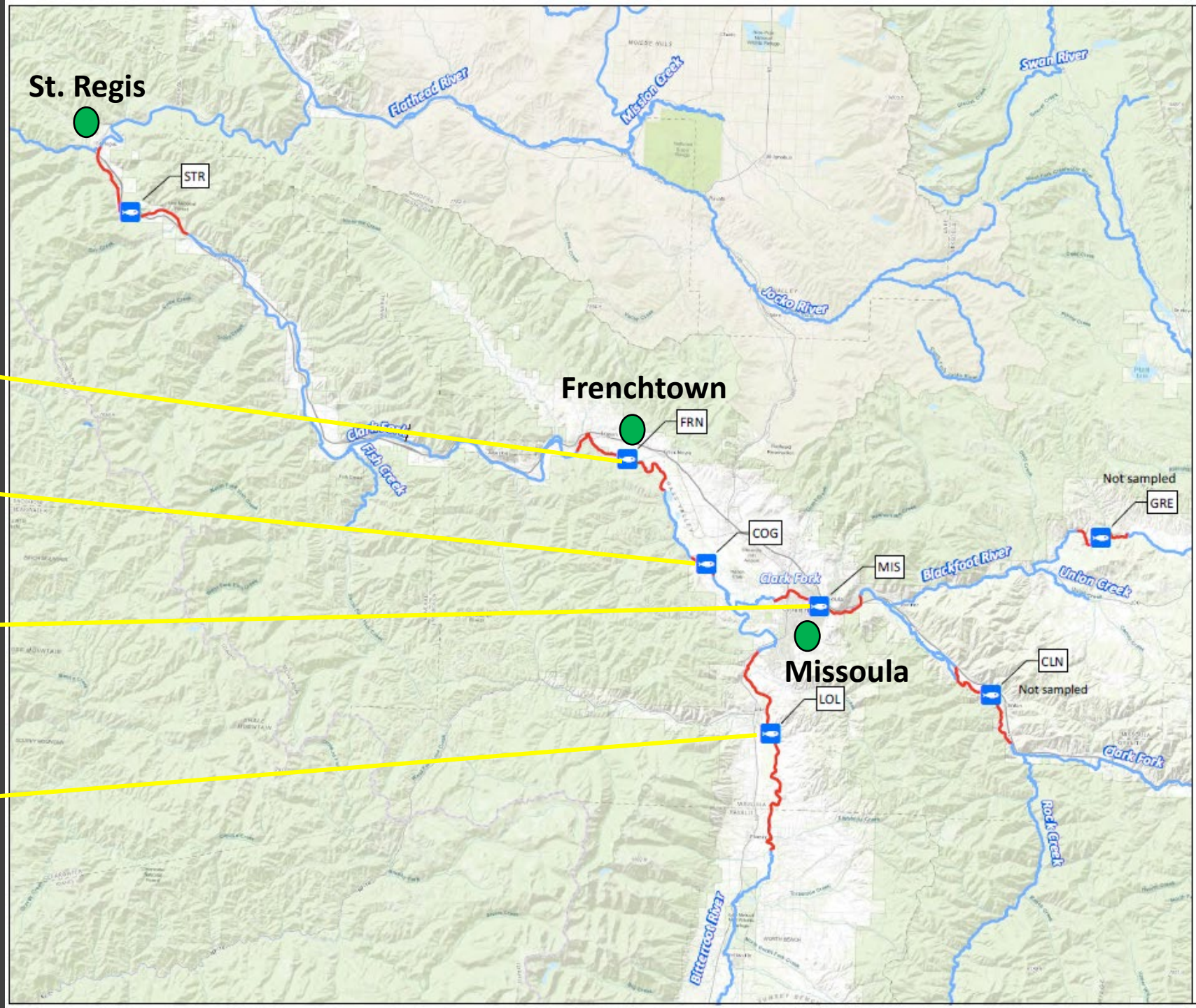


NP	Adults	W&C
14-18	2	1
22-26	<b>Avoid</b>	<b>Avoid</b>
26-30	<b>Avoid</b>	<b>Avoid</b>
30+	<b>Avoid</b>	<b>Avoid</b>

NP	Adults	W&C
26-30	10	5

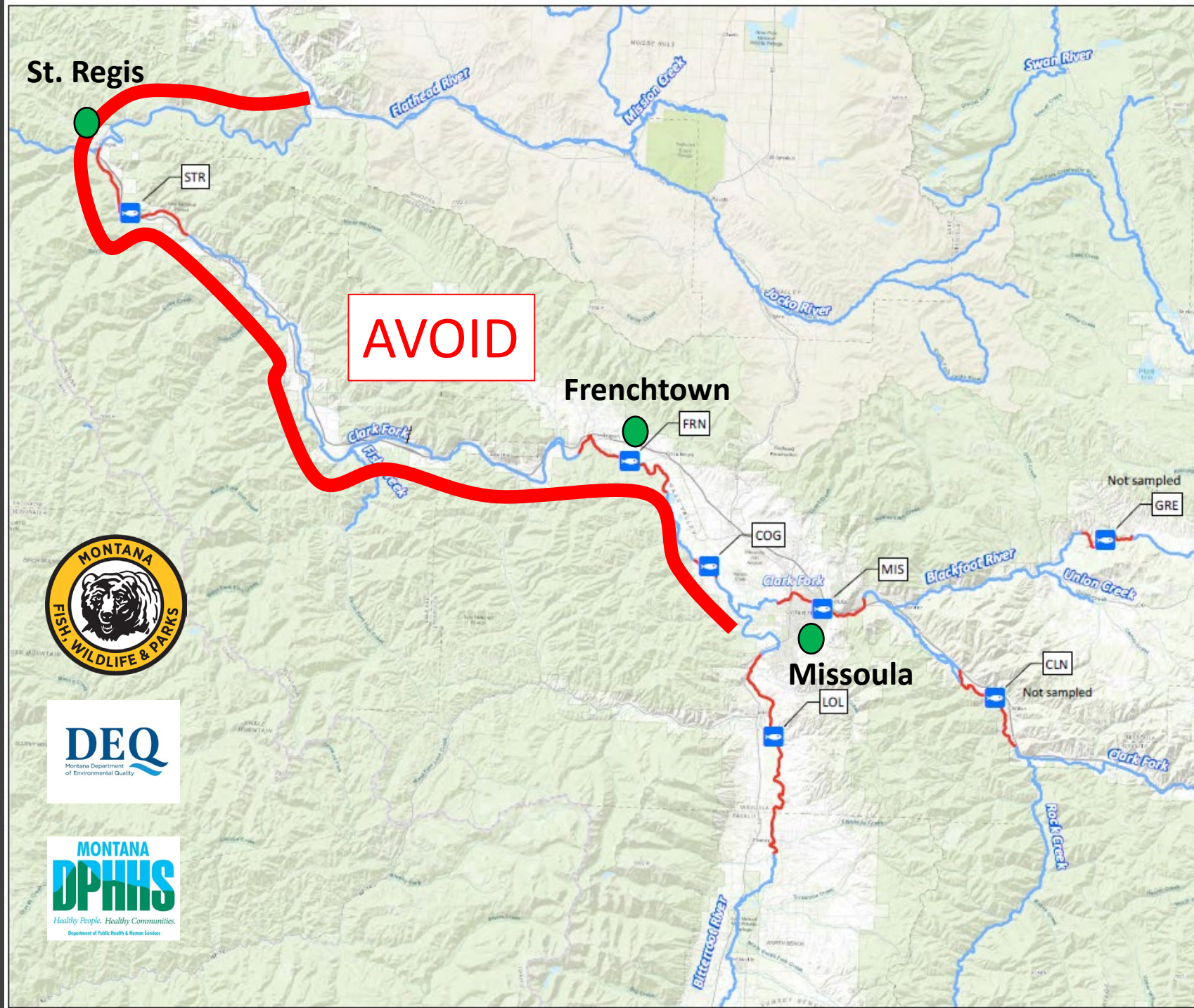
  

NP	Adults	W&C
14-18	8	3
18-22	3	1
22-26	4	2
26-30	<b>Avoid</b>	<b>Avoid</b>
30+	<b>Avoid</b>	<b>Avoid</b>



# Fish Consumption Advisory

Clark Fork River at Bitterroot River to Clark Fork River at Flathead River (148 miles)



# Quantifying Toxins to Inform Fish Consumption and Identify Sources of Pollutants



Search EPA.gov



Environmental Topics ▾

Laws & Regulations ▾

Report a Violation ▾

About EPA ▾

## Columbia River

[CONTACT US](#)

[Columbia River Home](#)

[Chemicals of Emerging Concern](#)

[Cold Water Refuges](#)

[Toxics Reduction Action Plan](#)

[About EPA's Work in the Basin](#)

## Columbia River Basin Restoration Funding Assistance Program

The Columbia River Basin Restoration Funding Assistance Program is a competitive grant program for environmental protection and restoration programs throughout the Columbia River Basin. The grant program offers funding assistance to eligible entities on a competitive basis. See below to learn more [about the program](#) and how it was established.

### New Funding Opportunities

- [Tribal Government Request for Applications](#) due January 31, 2023.
- [Toxic Reduction Lead Request for Applications](#) due March 13, 2023.

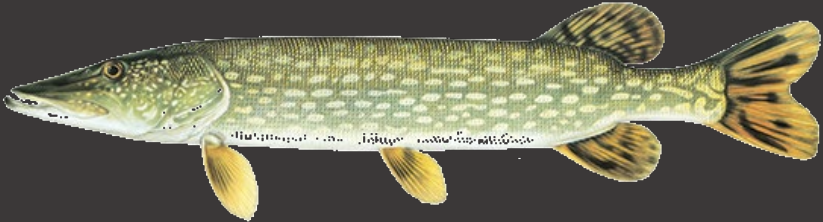
- Columbia River Basin Restoration Funding Assistance Program (EPA)
- Project Partners: Montana Trout Unlimited, Trustees, Clark Fork Coalition, FWP, DEQ, NRDP, CAG, Missoula County Water Quality and the Confederated Salish & Kootenai Tribes
- Approximate amount \$300,000 (\$220,000 grant, \$80,000 cost share)

# Quantifying Toxins to inform fish consumption and identifying sources of pollutants in the Upper Columbia River Basin

## Columbia River Toxins Grant (EPA)

Trevor Selch  
Fisheries Pollution Control Biologist

David Schmetterling  
Fisheries Research Coordinator



David Brooks



Brian Bartkowiak



Andrew Gorder



John Harrison



Elena Evans



Darrin Kron

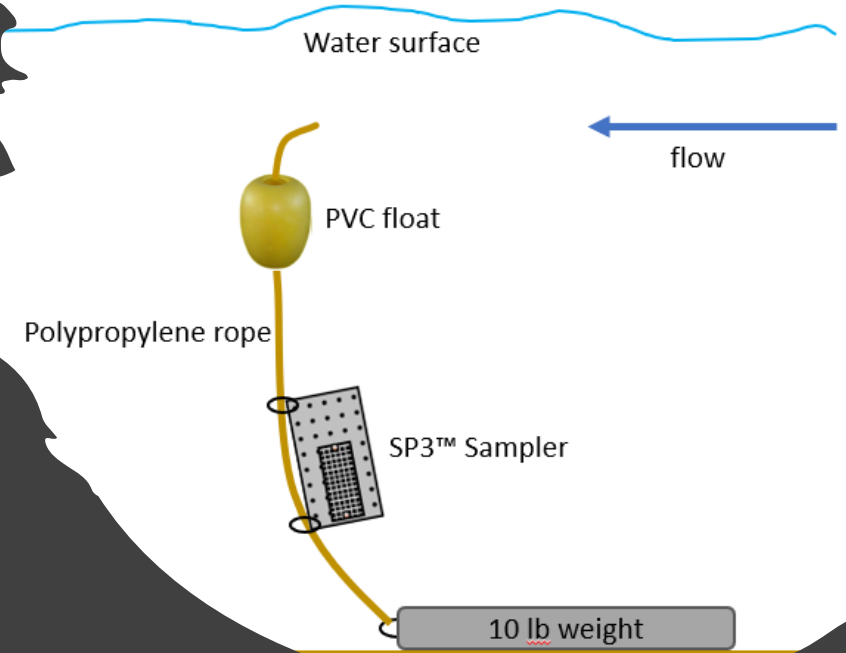
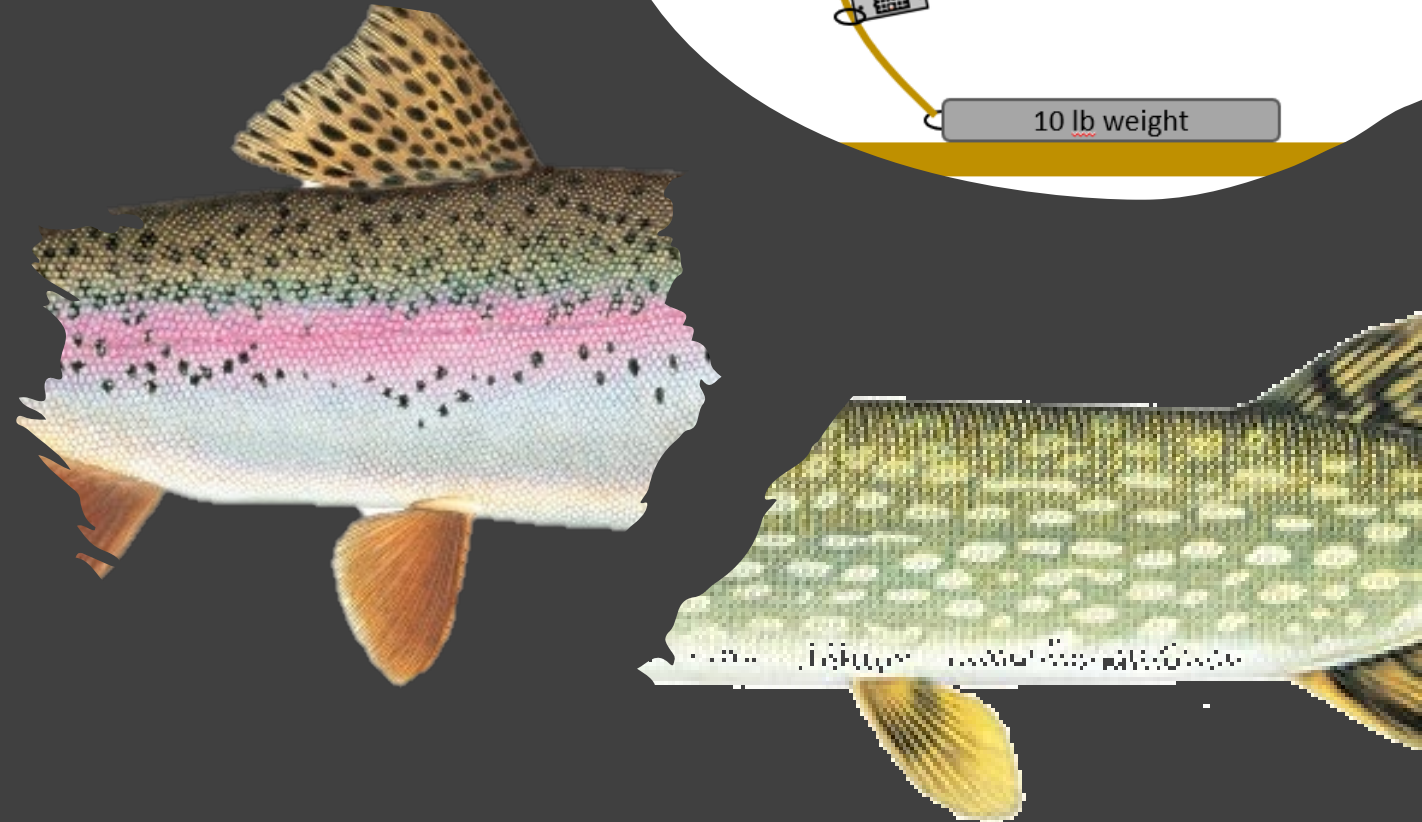




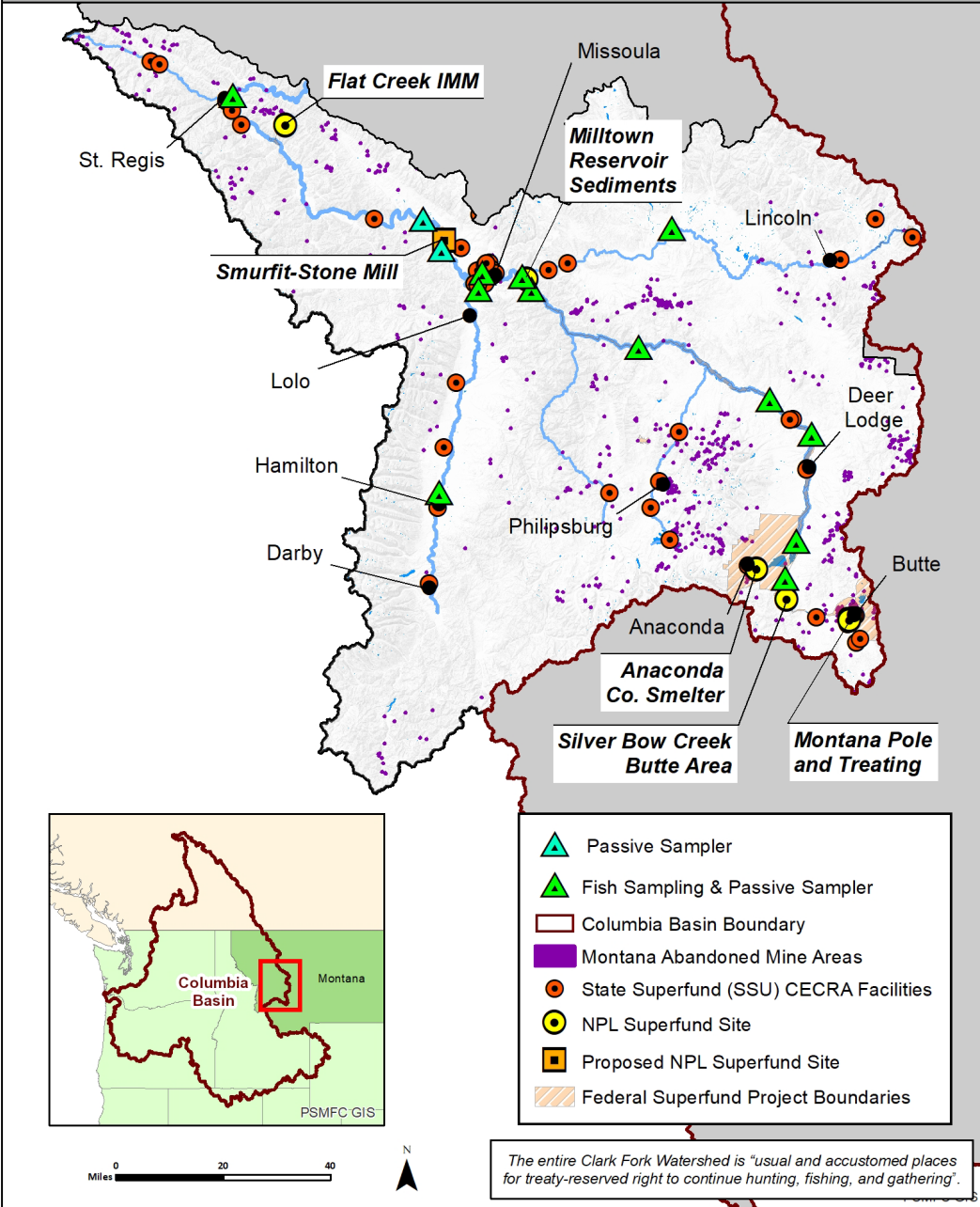
# Quantifying Toxins to Inform Fish Consumption and Identify Sources of Pollutants

## Goal:

- Expand Fish Consumption Advisory
- Identify other sources of contamination
- Education



Proposed Sites



Proposed Sites

