



PIVOT
POINT

Your Path to Behavioral Health

The West River Behavioral Health Alliance was formed in 2017 to help address behavioral health needs in Western South Dakota. Of primary concern were the high number of individuals being involuntarily committed to inpatient psychiatric care, the revolving door of those in care, and the fact the only state inpatient hospital is in Yankton, SD some 360 miles away from Rapid City.

The Crisis Stabilization Unit is located at the Care Campus
 321 Kansas City St, Rapid City, SD
 605-394-6128

Project Details

- Operated by Behavior Management Systems
- 14,000 square feet
- 16 beds in the Crisis Stabilization Unit where individuals can stay up to 5 days
- \$6.2 million public/private project
- Crisis Care Center will relocate to the Crisis Stabilization Unit
- 8 recliners in the Crisis Care Center where individuals can stay up to 24 hours
- Model program for the delivery of behavioral health services

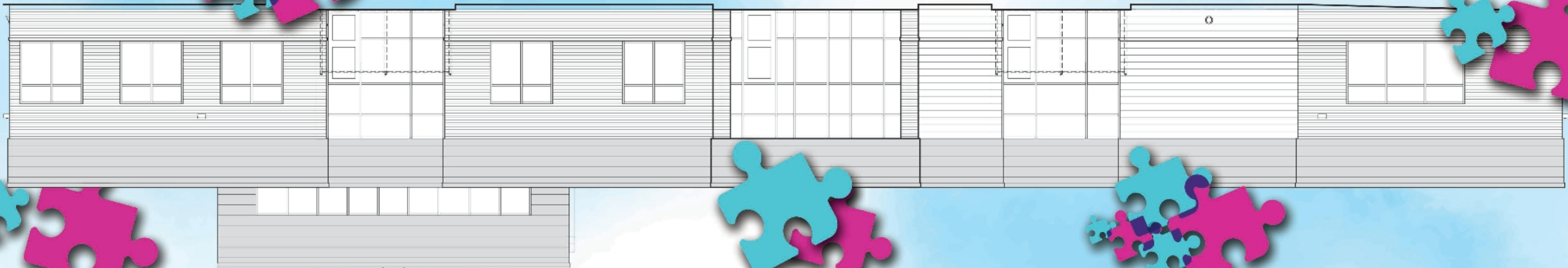
Crisis Stabilization Unit Services

- Outpatient Crisis Intervention
- Case Management
- Medication Stabilization/Psychiatric Coverage
- Involuntary Commitment Processing
- Qualified Mental Health Professional onsite 24 hours a day
- Petition Assessment
- Initiate Therapeutic Interventions
- Mental Health and Substance Use Therapies
- Treatment Groups
- Develop Safety Plan and Comprehensive Discharge Plan for continued community based care

Crisis Stabilization Unit Partners

- Behavior Management Systems
- Monument Health
- John T. Vucurevich Foundation
- Great Plains Tribal Leaders Health Board
- Pennington County
- Pennington County Sheriff's Office
- Pennington County Health & Human Services
- City of Rapid City
- Rapid City Police Department
- State of South Dakota
- South Dakota State Legislature
- South Dakota Department of Social Services
- Partnership agreements to be formed with other Western South Dakota counties
- Other community partners and philanthropic organizations





Crisis Stabilization Unit At The Care Campus

