



THE CITY-COUNTY OF Butte-Silver Bow

Community and Economic Development
Kristen Rosa, Economic Development Coordinator
Ph: 406-497-6470 E-Mail: krosa@bsb.mt.gov

August 17, 2023

Mrs. Judy Jonart and Mr. Kevin Patrick
Butte School District No. 1
111 N Montana St
Butte, MT 59701

RE: Butte-Silver Bow's proposed plans for the expansion of the South Butte Targeted Economic Development District, Uptown Butte Urban Renewal District and the creation of a new Montana Connections Targeted Economic Development District.

The Community and Economic Development Department of Butte-Silver Bow is proposing the following changes to two existing districts with tax increment provisions and the creation of a new one.

1. Expand the South Butte TEDD by adding additional properties south of the existing district into the boundaries and adopting a tax increment provision for those properties. The purpose for adding the properties would be to assist with the development of industrial infrastructure on property that is zoned M1. There is a lack of developable M1 sites within Butte-Silver Bow. We are also proposing to amend the plan to include projects identified in an infrastructure analysis completed for the area. On the included map the properties we are proposing to add are highlighted in purple.
2. Expand the Uptown Butte URD to include property north of the existing boundaries and adopt a tax increment provision for those properties. The purpose for adding the properties would be to assist with the surveying of a large Butte-Silver Bow property that could be used for future housing and/or commercial development and the Kelly Warehouse property that could support future commercial development. We are also proposing to amend the plan to add projects such as the Motherlode Theater and projects outlined in the Uptown Master Plan. On the included map the properties we are proposing to add are highlighted in purple.
3. Create a new district around the Montana Connections Business Development Park. The tax increment provision for Tax Increment Financing Industrial District #2, now known as a Targeted Economic Development District, expired on June 30, 2022. The area has attracted quite a bit of industrial development and is becoming known as a great place to

[Type here]

develop. The purpose of creating this new district would be to expand the industrial infrastructure to property currently without infrastructure or underserved. These properties include State Trust land that is managed for schools. On the included map the new boundaries are shown in black and purple. The previous boundaries include the area in red.

Our current schedule includes a Public Hearing for each of these proposals at the Council of Commissioners meeting on October 18th at 7:30.

If you have any questions, please let us know.

Sincerely,

Karen Byrnes
Community Development Director
kbyrnes@bsb.mt.gov
406-497-6467

Kristen Rosa
Economic Development Coordinator
krosa@bsb.mt.gov
406-497-6470

Pauline Giacomino
URA Financial & Project Manager
pgiacomino@bsb.mt.gov
406-497-6267



THE CITY-COUNTY OF Butte-Silver Bow

Community and Economic Development
Kristen Rosa, Economic Development Coordinator
Ph: 406-497-6470 E-Mail: krosa@bsb.mt.gov

October 24, 2023

Mr. Kellogg
Ramsay School District
3 Russell St.
Ramsay, MT 59748

RE: Butte-Silver Bow's proposed plans for the creation of a new Montana Connections Targeted Economic Development District.

The Community and Economic Development Department of Butte-Silver Bow is proposing the following:

1. Create a new district around the Montana Connections Business Development Park. The tax increment provision for Tax Increment Financing Industrial District #2, now known as a Targeted Economic Development District, expired on June 30, 2022. The area has attracted quite a bit of industrial development and is becoming known as a great place to develop. The purpose of creating this new district would be to expand the industrial infrastructure to property currently without infrastructure or underserved. These properties include State Trust land that is managed for schools. On the included map the new boundaries are shown in black.

If you have any questions regarding the creation of the district please let me know. I am happy to come to the school and discuss the proposal with you.

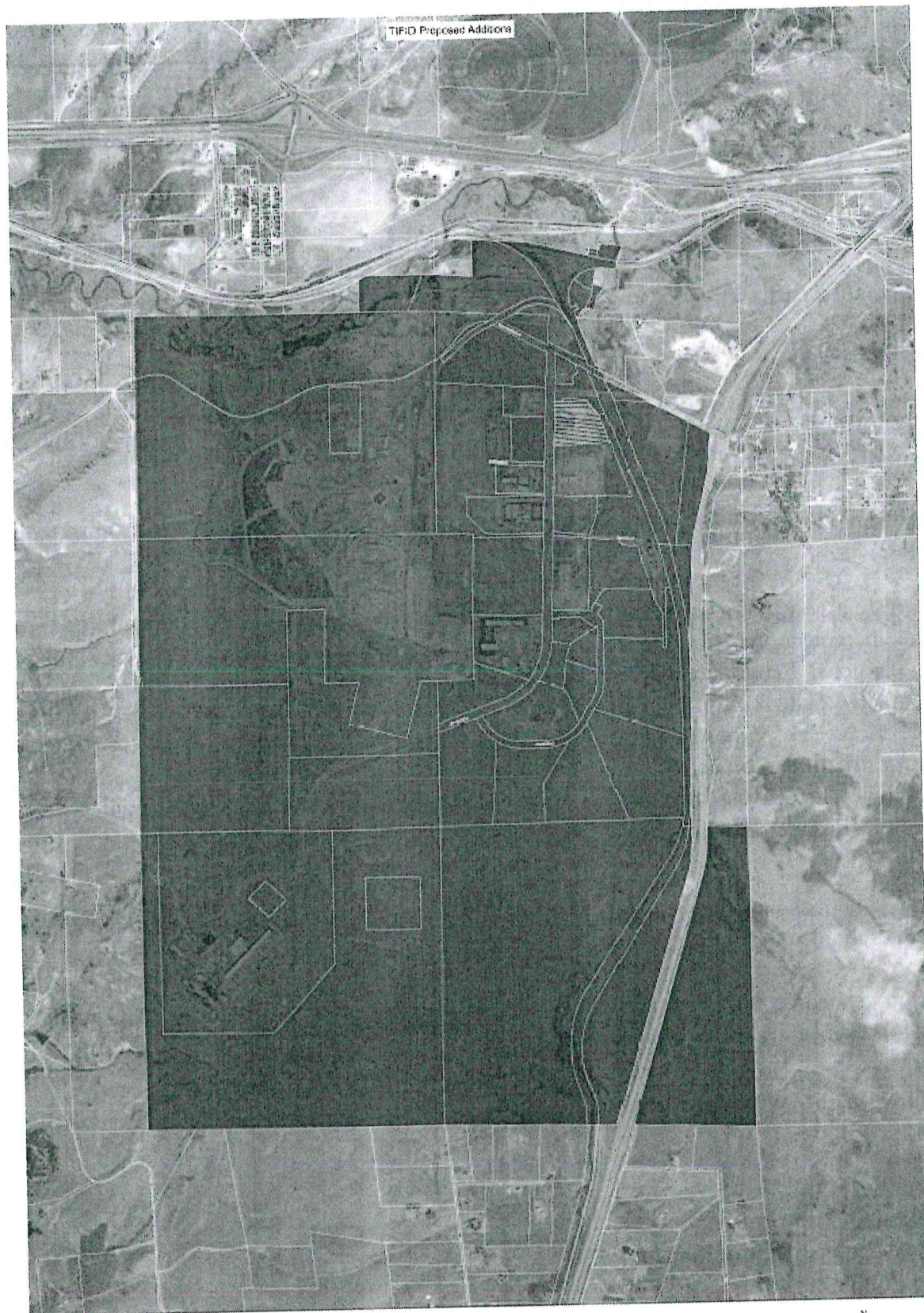
Our current schedule also includes a Public Hearing for the proposal at the Council of Commissioners meeting on November 1st at 7:30.

If you have any questions, please let us know.

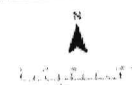
Sincerely,

Kristen Rosa
Economic Development Coordinator
krosa@bsb.mt.gov
406-497-6470

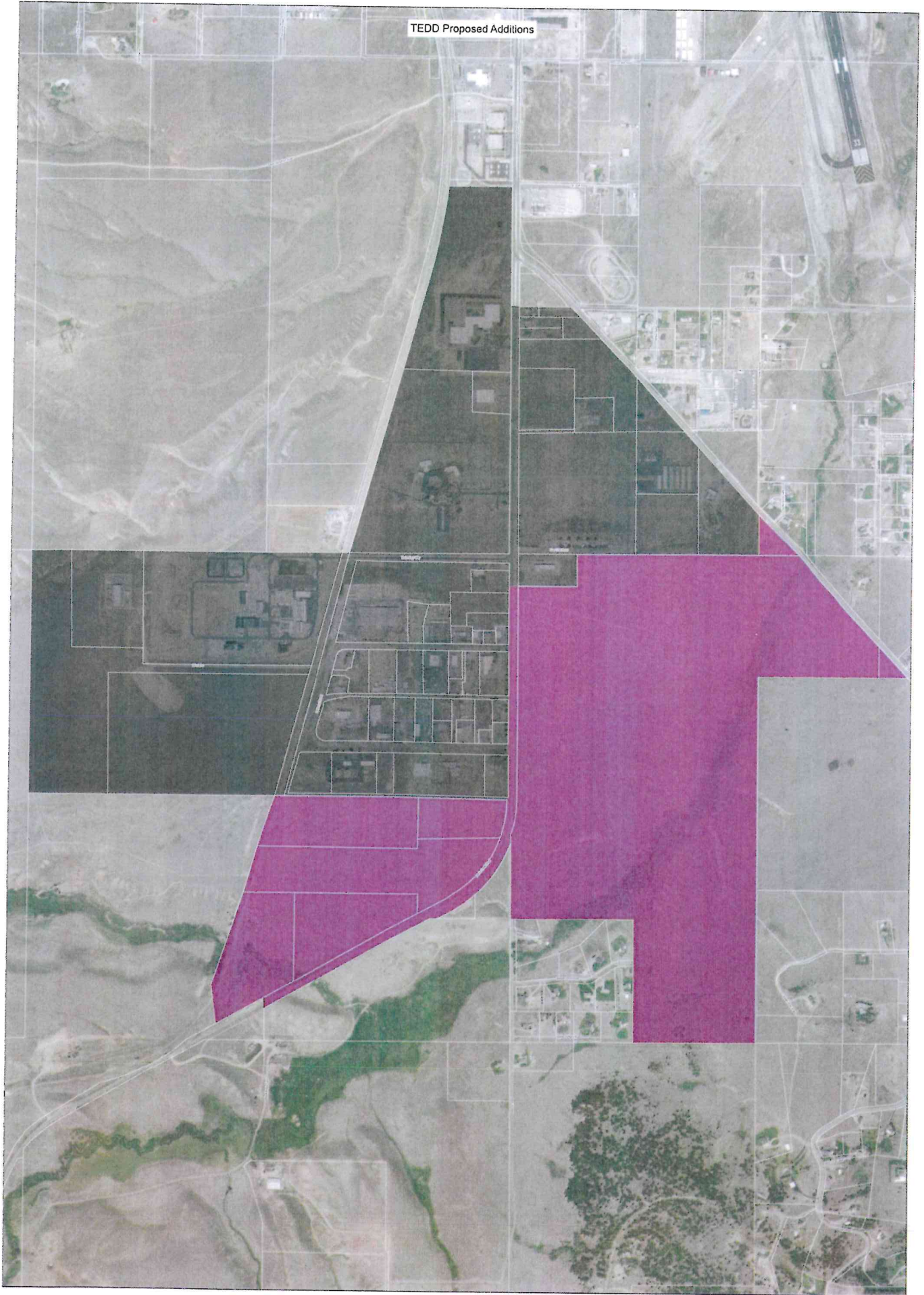
[Type here]



CRMP



TEDD Proposed Additions



DRAFT



EXHIBIT "A"

Amended Butte Uptown Urban Renewal District Legal Description and Map

