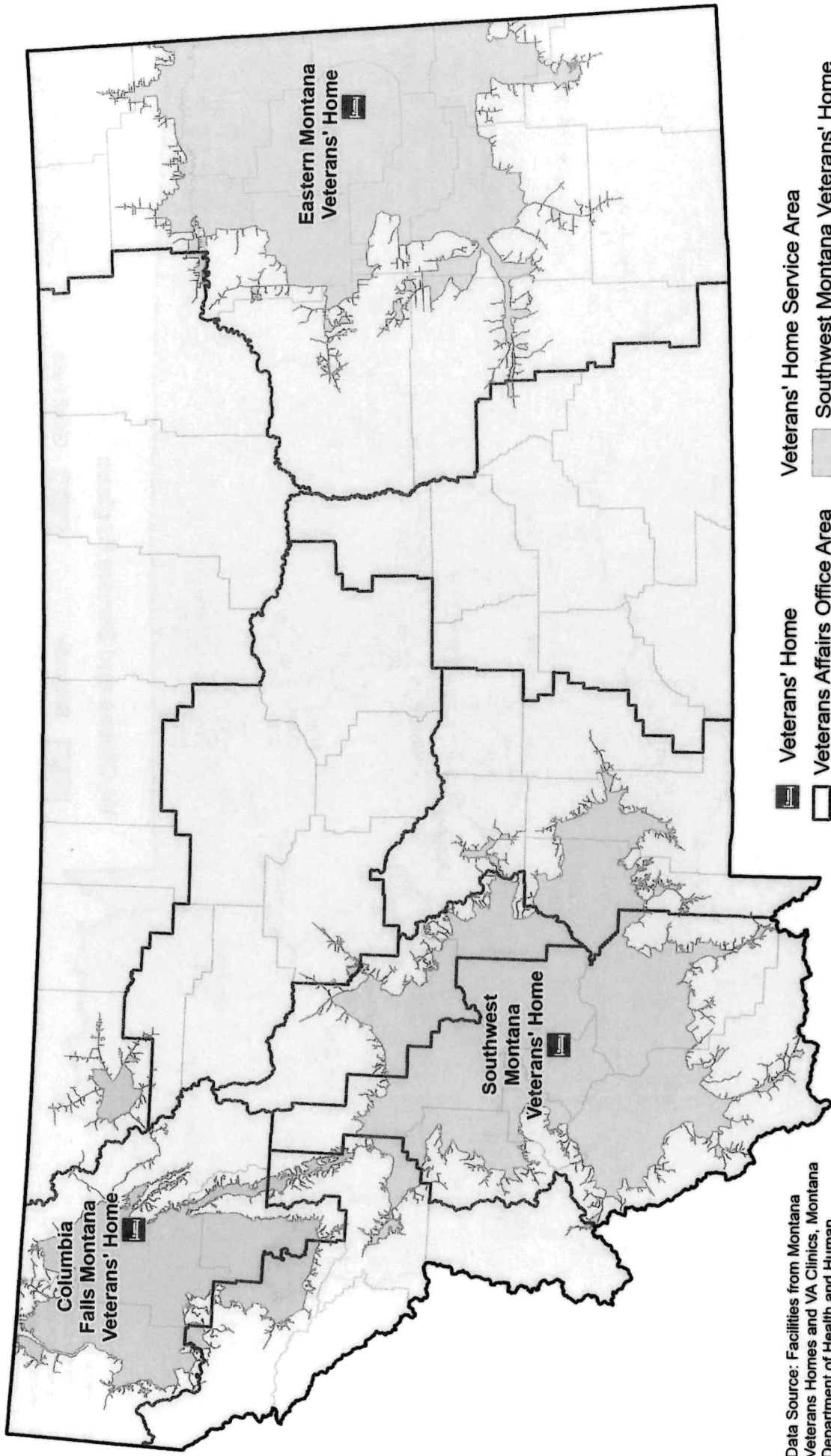


# Montana Veterans Served by Long-Term Care Facilities

Within Two Hours of Service



Data Source: Facilities from Montana Veterans Homes and VA Clinics, Montana Department of Health and Human Services, Regions from MVAD Benefits Statistics Report FY2022, Montana Veteran Affairs Division. Two-hour drive time areas calculated using ArcGIS Pro Network Analyst, ESRI.

- Veterans' Home Service Area
- Veterans' Home
- Veterans Affairs Office Area
- Southwest Montana Veterans' Home
- Eastern Montana Veterans' Home
- Columbia Falls Montana Veterans' Home

