



WHO WE ARE

- Regional rail authority and subdivision of state government
- Established per MCA 7-14-16
- Largest transportation district in Montana, focused on supporting existing freight and passenger operations and expanding passenger rail



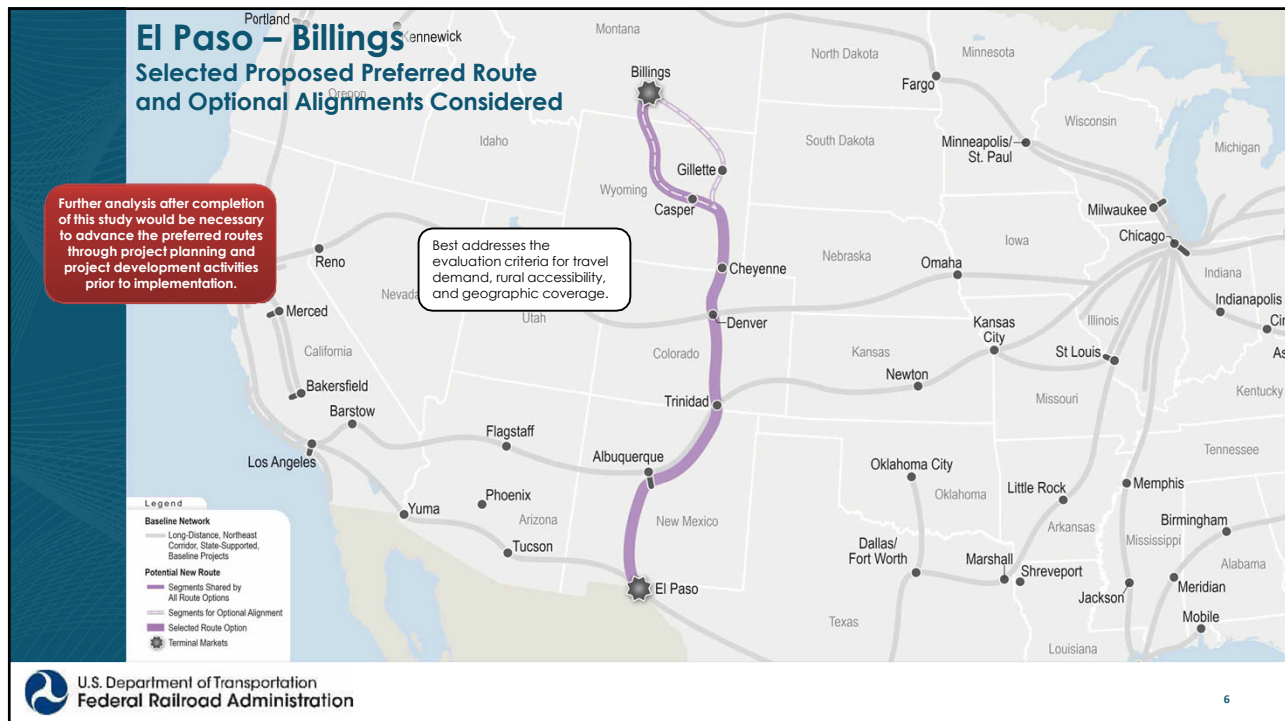
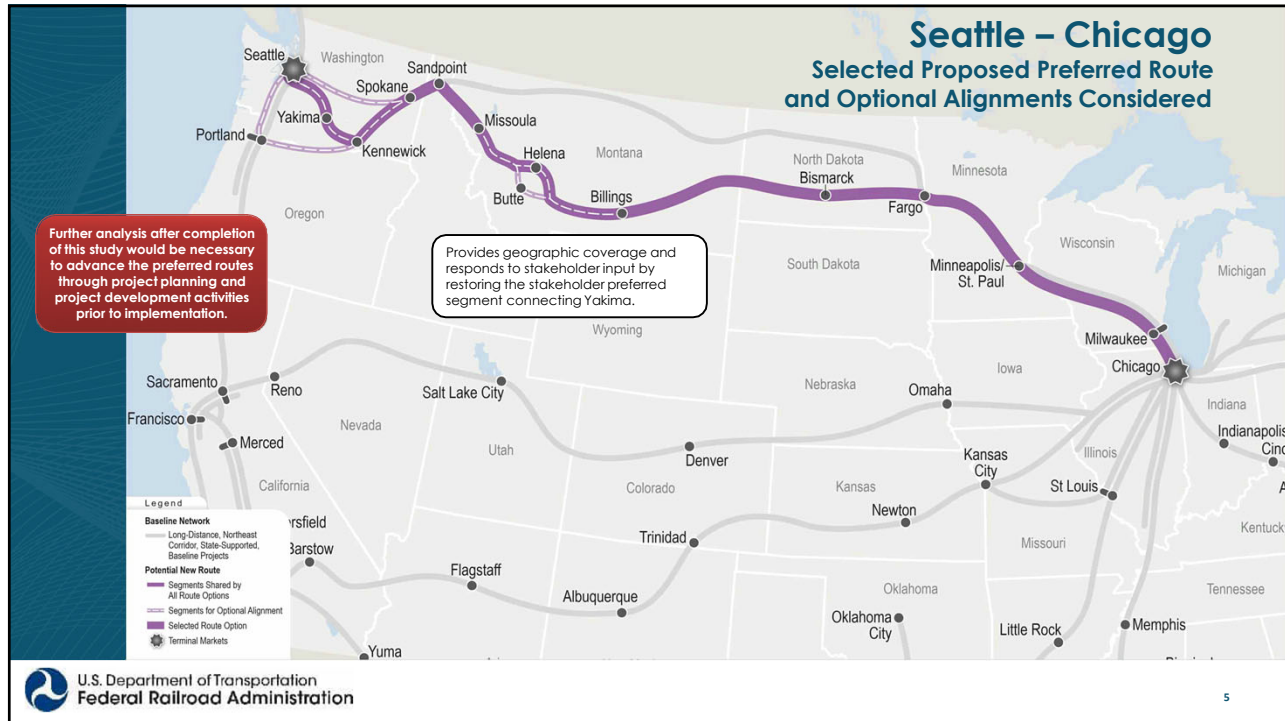
WHO WE ARE

- Governed by a board comprising
 - Member counties
 - BNSF
 - Amtrak
 - MDT
 - CSKT, Crow, and Northern Cheyenne Tribes



Amtrak Daily Long-Distance Study

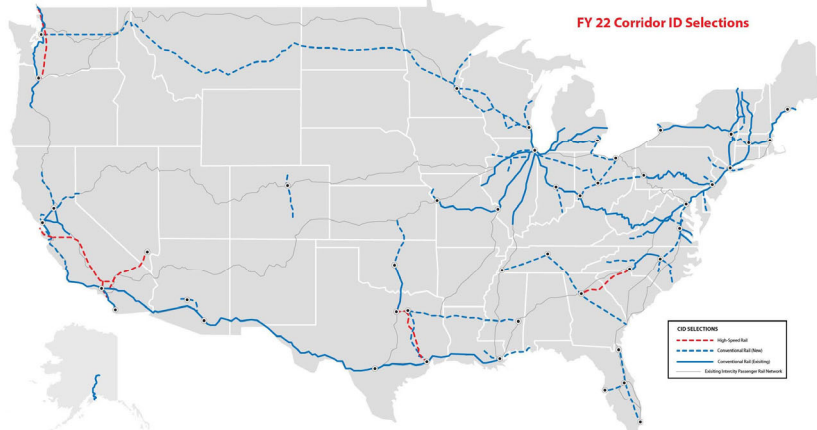




CORRIDOR ID AND DEVELOPMENT PROGRAM



Investments to Enhance Intercity Passenger Rail Laying the foundation for world-class rail in America



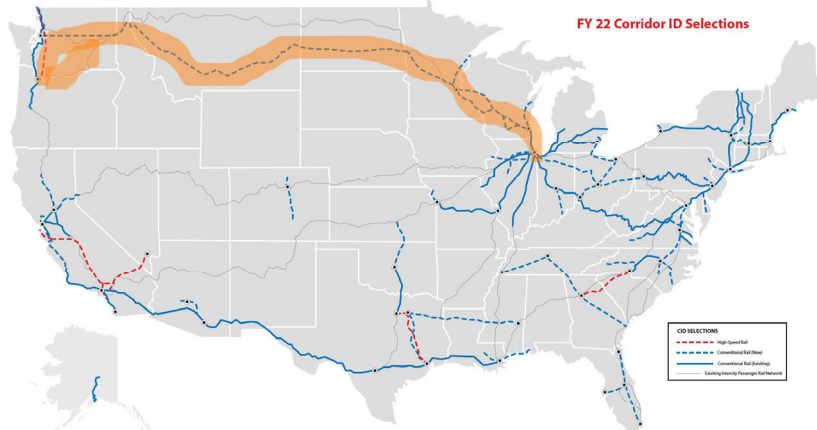
DISCLAIMER: This product is for informational purposes and may not have been prepared for or be suitable for legal, engineering, or surveying purposes. It does not represent an on-the-ground survey and represents only the approximate relative location of cities, project locations, and routes. Cities shown on the map are added to provide geographic reference and are not intended for any other purpose. Every effort has been made to ensure the highest accuracy of all data on this map, but some errors can occur.



CORRIDOR ID AND DEVELOPMENT PROGRAM



Investments to Enhance Intercity Passenger Rail Laying the foundation for world-class rail in America



DISCLAIMER: This product is for informational purposes and may not have been prepared for or be suitable for legal, engineering, or surveying purposes. It does not represent an on-the-ground survey and represents only the approximate relative location of cities, project locations, and routes. Cities shown on the map are added to provide geographic reference and are not intended for any other purpose. Every effort has been made to ensure the highest accuracy of all data on this map, but some errors can occur.





FRA CORRIDOR IDENTIFICATION AND DEVELOPMENT PROGRAM

PROJECT: NORTH COAST HIAWATHA

Step 1: Scoping - \$500,000

Step 2: Service Development Plan

Step 3: Final Design



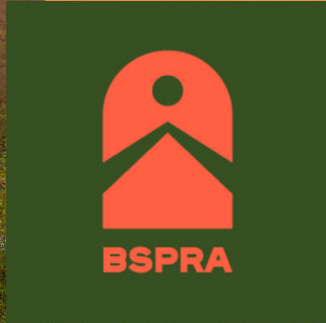
**BIG SKY
PASSENGER
RAIL AUTHORITY**

OTHER BSPRA INITIATIVES IN 2024

- Fed-State Partnership - Malta Project
- Workforce development
- PNWER high performance rail and hydrogen development
- Small parcel delivery
- Canadian collaboration



For more information:



www.bigskyrail.org

