

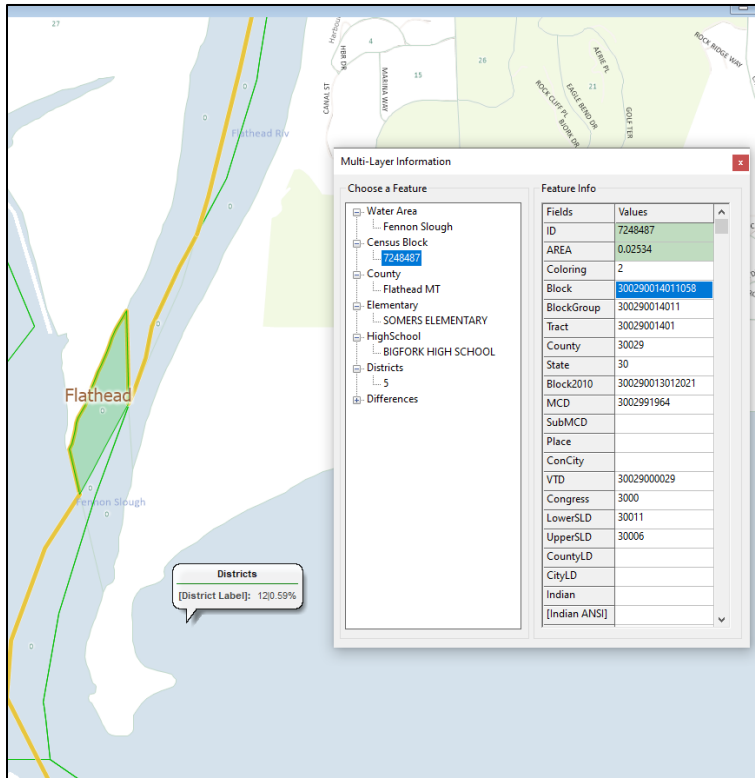
Technical Amendments

Final House Districts Plan

Summary of Technical Modifications

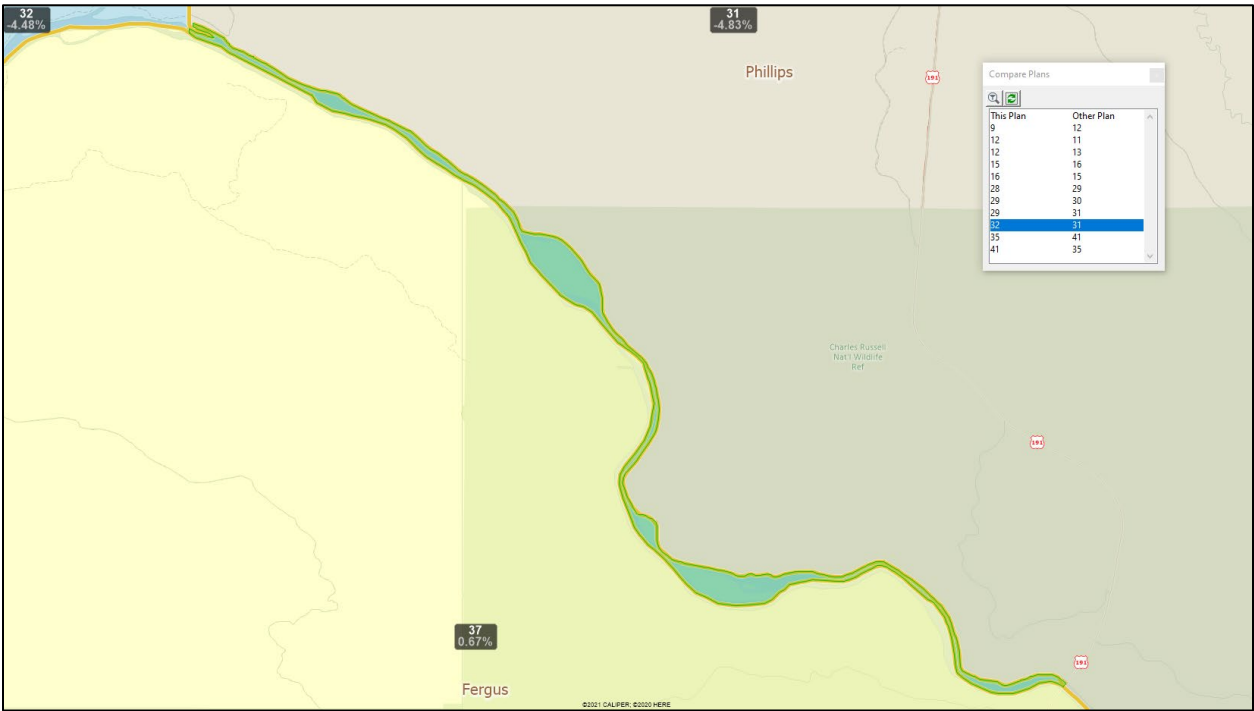
1. HD009-HD012 boundary alignment to school district boundary
2. Eliminate HD032 Tail along Missouri River into HD031
3. Bighorn County Modification No. 1 (SJ8 Recommendation)
4. Bighorn County Modification No. 2 (Population Rebalance)
5. Boundary Modification in North Laurel
6. Boundary Modification in Sweet Grass County near Hwy 191
7. Boundary Modification in Fergus County south of Lewistown (Population Rebalance)

1. Move Census Block #300290014011058 from HD012 to HD009



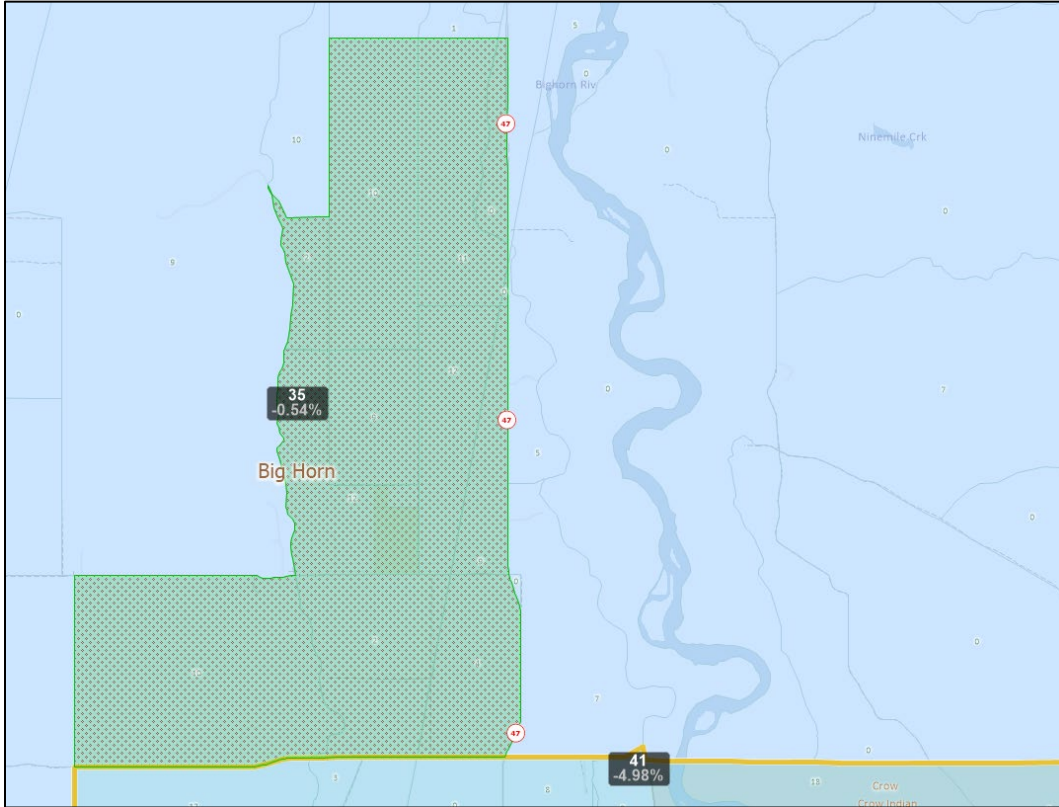
Moving Census Block #300290014011058 from HD012 to HD009 aligns the legislative districts to the school district boundary line for Somers Elementary and Bigfork High School. The census block does not contain any resident population.

2. Move Census Block # 300710602003529 from HD032 to HD032



Reassigning Census Block # 300710602003529 from HD032 to HD031 eliminates the boundary tail of HD032. The census block does not contain any population.

3. Move 12 Census Blocks (81 People) from HD035 to HD041

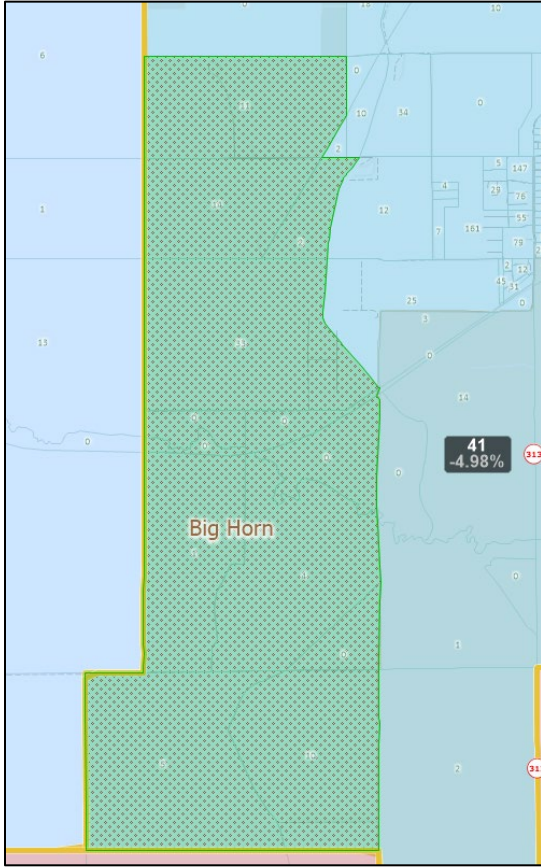


Resassignment of the below Census Blocks from HD035 to HD041 was part of the SJ8 Bipartisan Recommendations Amendment.

Census Blocks and Population Summary

#	CensusBlock ID	Adj_Pop
1	300030001004189	10
2	300030001004182	11
3	300030001004183	0
4	300030001004181	0
5	300030001004200	2
6	300030001004201	12
7	300030001004202	9
8	300030001004188	12
9	300030001004190	9
10	300030001004194	4
11	300030001004187	2
12	300030001004186	10
Total Population		81

4. Move 13 Census Blocks (80 People) from HD041 to HD035

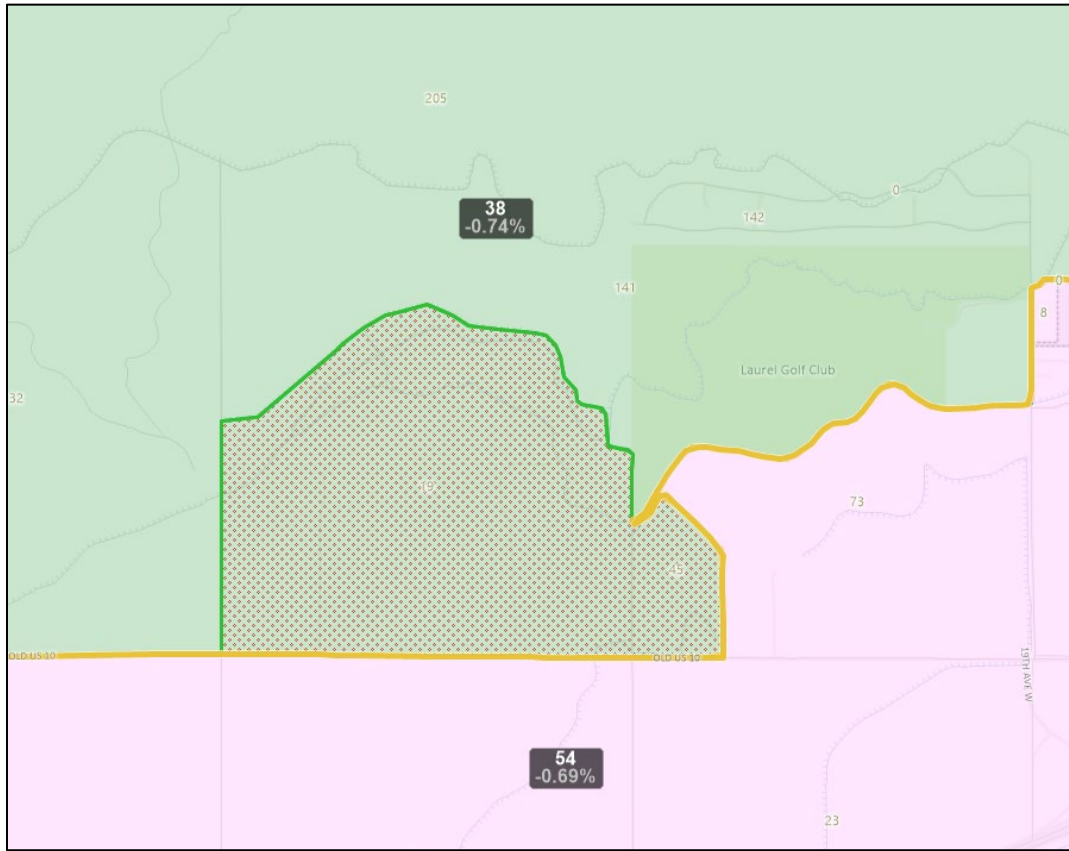


Reassignment of the below Census Blocks from HD035 to HD041 was part of the SJ8 Bipartisan Recommendations Amendment. Moving these blocks replaces the population moved in item No. 2.

Census Blocks and Population Summary

#	CensusBlock ID	Adj_Pop
1	300030001004259	11
2	300030001002014	14
3	300030001002013	2
4	300030001004274	0
5	300030001002015	33
6	300030001004273	0
7	300030001004268	0
8	300030001004267	0
9	300030001004266	1
10	300030001004271	4
11	300030001004272	0
12	300030001004279	10
13	300030001004278	5
Total Population		80

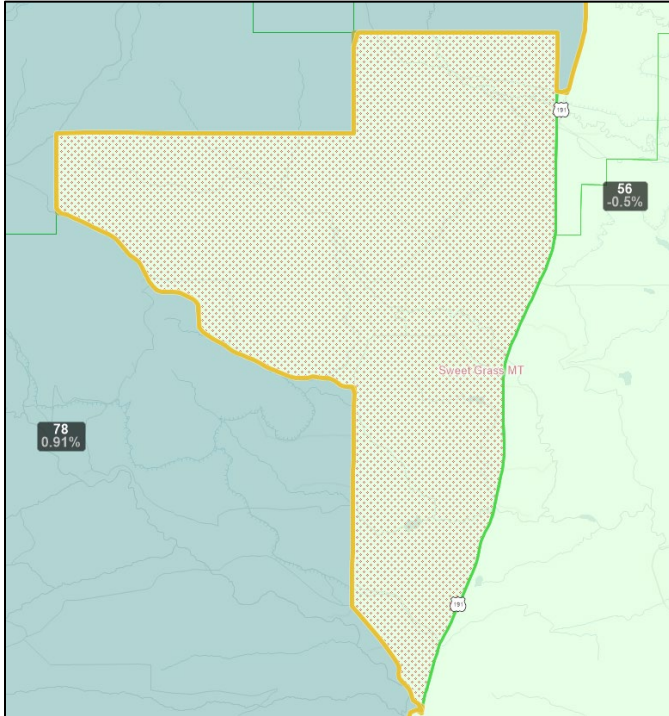
5. Move 2 Census Blocks (64 People) from HD038 to HD054



Reassignment of the below Census Blocks from HD038 to HD041. These blocks were moved as part of the SJ8 Bipartisan Recommendations Amendment, in part to balance population to keep Musselshell County whole. Moving these census blocks returns to boundary to the TCP3 iteration of the map.

#	CensusBlock ID	Adj_Pop
1	301110014031012	45
2	301110014031008	19
Total Population		64

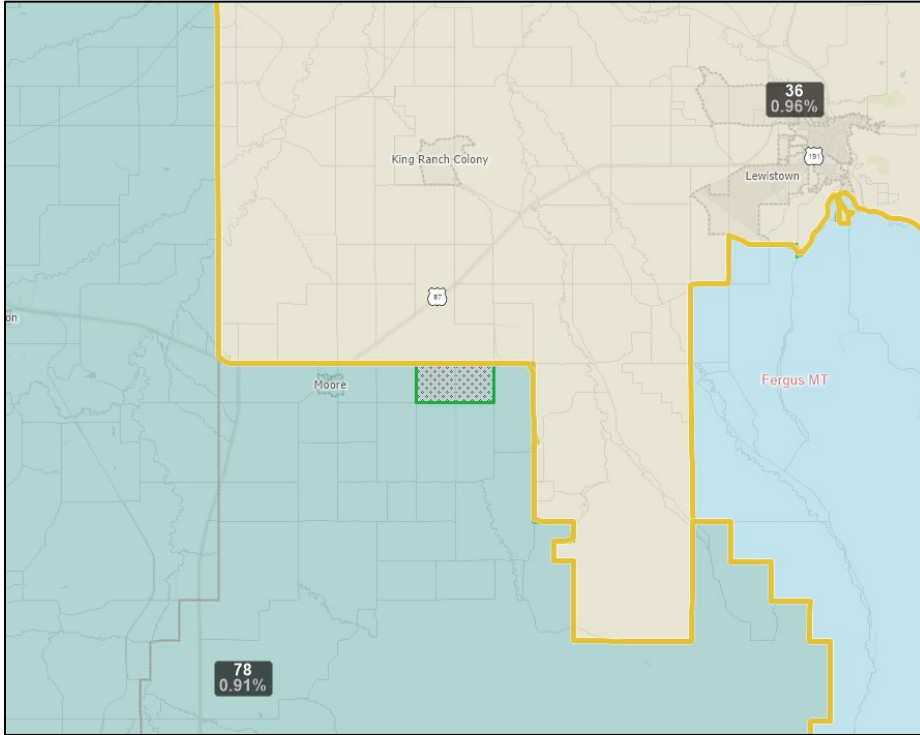
6. Move 9 Census Blocks (40 People) from HD056 to HD078



The below Census Blocks were moved from HD056 to HD078 as part of the SJ8 Bipartisan Recommendations Amendment. Moving these blocks back to HD078 will align the boundary to Hwy 191 which may be helpful to the election administrator of Sweet Grass County. Moving these census blocks returns to boundary to the TCP3 iteration of the map.

Sweet Grass Mod No. 1		
#	CensusBlock ID	Adj_Pop
1	300979670001105	3
2	300979670001090	1
3	300979670001104	12
4	300979670001103	0
5	300979670001520	11
6	300979670001523	4
7	300979670001106	2
8	300979670001522	7
9	300979670001538	0
Total Population		40

7. Move 2 Census Blocks (31 People) from HD078 to HD036



Reassigned the below Census blocks from HD078 to HD036 rebalances the population added to HD078 by item No 6. Moving these census blocks returns to boundary to the TCP3 iteration of the map.

South of Lewistown Mod No. 1		
#	CensusBlock ID	Adj_Pop
1	300270301004117	10
2	300270301004118	21
Total Population		31