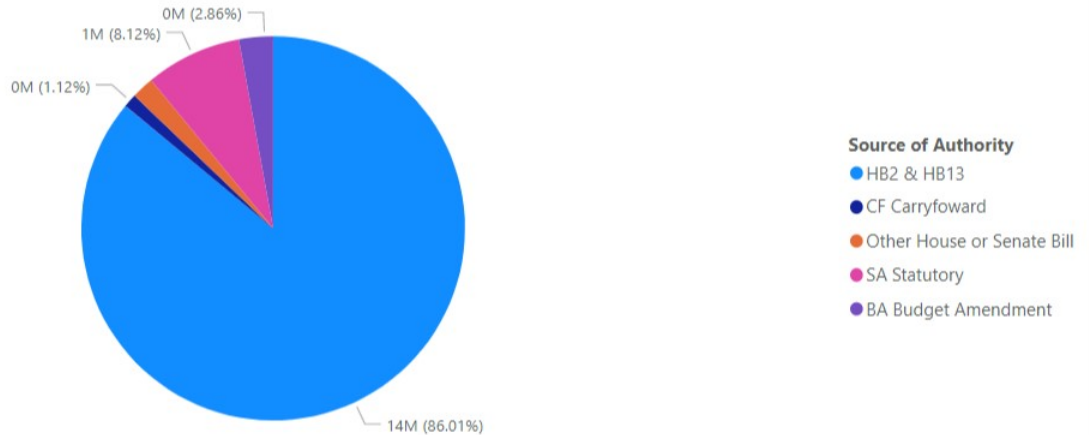


DEPARTMENT OF LIVESTOCK

TOTAL APPROPRIATION AUTHORITY

The total appropriation authority for the agency is shown in the pie chart below. HB 2 and HB 13 provide 86.0% of the total authority for this agency. All types of appropriation authority for this agency are described below, including total budget and the percent expended by source of authority.

Total Modified Budget by Source of Authority



Source of Authority	Modified Budget	Expended Budget	Percent Expended
HB2 & HB13	14,058,937	4,776,771	34.0%
CF Carryforward	183,117	48,107	26.3%
Other House or Senate Bill	308,659	10,500	3.4%
SA Statutory	1,326,680	716,649	54.0%
BA Budget Amendment	468,035	79,009	16.9%
Total	16,345,428	5,631,036	34.5%

- FiscalMonth
- Select all
 - Jul
 - Aug
 - Sep
 - Oct
 - Nov
 - Dec

Other House or Senate Bills

Authority originally budgeted in the Department of Administration totaling \$308,659 was transferred to the Department of Livestock, increasing the budget by 3.4%. This is the unexpended authority from the previous biennium to fund the development of an IT interface system (HB 10, 2019 session). Of the original \$500,000 authorized for the project, \$191,341 was expended in FY 2021. The agency anticipates completing the project in the current biennium.

Budget Amendments

Federal budget authority was increased by \$468,035 in FY 2022. Federal authority for tracking and responding to animal disease accounts for \$139,214 and was 24.8% expended. Funds for animal health totaling \$24,221 have been 79.9% expended. The agency also received \$156,178 in federal funding for new equipment and

training at the Montana Veterinary Diagnostic Laboratory, of which 16.1% or \$25,098 has been expended on equipment. Funding for livestock loss and elk collaring totaling \$148,422 has not yet been expended.

Carryforward

The agency had \$183,117 in appropriation authority that was continued or carried forward from FY 2021. Most of this funding was state special revenue authority totaling \$169,454, which was derived from livestock per capita tax, livestock inspection fees, and taxes on milk distributors. Other authority includes \$9,053 in federal revenue for supporting meat and poultry inspection and \$4,610 in general fund. The agency has expended 26.3% of carryforward funding.

Statutory Appropriations

Statutory appropriations for the agency are used to compensate for the loss of livestock to predators. Revenue is statutorily appropriated from the general fund and livestock per capita fees. The agency has expended \$716,649 year-to-date in FY 2022.

HB 2 BUDGET MODIFICATIONS

The following chart shows the HB 2 budget as passed by the legislature, including the pay plan, and the HB 2 modified budget through November 30, 2021. Net modifications to the budget include operating plan changes from one expenditure account to another, program transfers, reorganizations, and agency transfers of authority. The **positive modifications** and **negative modifications** are shown by program, expenditure account, and fund type.

Legislative Budget Compared to Modified Budget - HB 2 Only

Agency Name	Legislative Budget	Modified Budget	Net Modifications
Department of Livestock	14,058,937	14,058,937	0
ANIMAL HEALTH DIVISION	7,357,634	7,409,071	51,437
BRANDS ENFORCEMENT DIVISION	4,239,232	4,201,002	-38,230
CENTRALIZED SERVICES DIVISION	2,462,071	2,448,864	-13,207
Total	14,058,937	14,058,937	0

Expenditure	Legislative Budget	Modified Budget	Net Modifications
61000 Personal Services	9,501,657	9,501,657	0
62000 Operating Expenses	3,912,799	3,912,799	
63000 Equipment & Intangible Assets	245,000	245,000	
68000 Transfers-out	399,481	399,481	

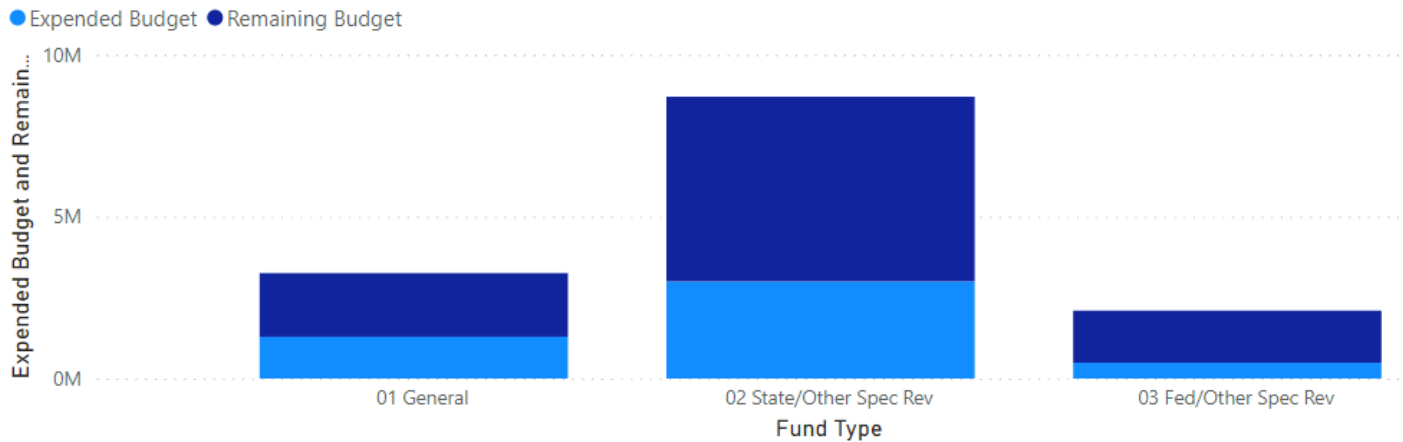
Fund Type	Legislative Budget	Modified Budget	Net Modifications
01 General	3,257,365	3,257,365	
02 State/Other Spec Rev	8,703,859	8,703,859	0
03 Fed/Other Spec Rev	2,097,713	2,097,713	0

The legislature gave the agency the authority to reallocate personal services to manage an additional 1.0% vacancy savings imposed in the 2021 legislative session. To manage the additional vacancy savings, the agency moved \$51,437 in authority for personal services from the Brands Enforcement, Centralized Services Divisions to the Animal Health Division.

HB 2 APPROPRIATION AUTHORITY

The following chart shows the appropriated budget for the agency compared to expenditures through November 30, 2021.

Expended Budget and Remaining Budget by Fund Type - HB 2 Only



Expenditure	Modified Budget	Expended Budget	Percent Expended
Personal Services	9,501,657	3,497,606	36.8%
Operating Expenses	3,912,799	1,129,166	28.9%
Equipment & Intangible Assets	245,000	150,000	61.2%
Transfers-out	399,481		

Program Name	Modified Budget	Expended Budget	Percent Expended
ANIMAL HEALTH DIVISION	7,409,071	2,300,944	31.1%
BRANDS ENFORCEMENT DIVISION	4,201,002	1,690,088	40.2%
CENTRALIZED SERVICES DIVISION	2,448,864	785,740	32.1%
Total	14,058,937	4,776,771	34.0%

State special revenue supports 61.9% of the agency’s HB 2 budget, general fund 23.2%, and the remaining 14.9% is from federal revenue. As of the end of November the agency expended 34.0% of the HB 2 budget, slightly higher than the average expenditure rate over the previous three biennia of 32.1%.

Personal Services

The budget for personal services of \$9.5 million is 36.8% expended, which is 2.9% lower than the average for the three previous biennia.

Operating Expenses

The budget for operating expenses of \$3.9 million was 28.9% expended, which compares to an average expenditure rate of 30.8% over the three previous biennia. The legislature approved \$200,000 in operations authority funded with general fund and matching federal special revenue to support the United States Department of Agriculture Cooperative Interstate Shipping (CIS) Program. The CIS project is currently in the application phase; the budget has not yet been expended. Budget authority for the information technology services totals \$303,900 and is 40.2% or \$122,212 expended.

Equipment

The budget for equipment of \$245,000 was 61.2% expended. Expenditures rates for equipment over the previous biennium are volatile.

The agency expended \$150,000 of state special revenue for the purchase of a \$180,000 helicopter for predator control, the \$30,000 balance and associated GSA fees of \$16,660 was paid for with non-HB 2 state special revenue authority. The legislature appropriated \$300,000 of state special revenue per capita fees over the biennium for the purchase and re-configuration of the aircraft. The agency anticipates expending the balance in the current biennium.

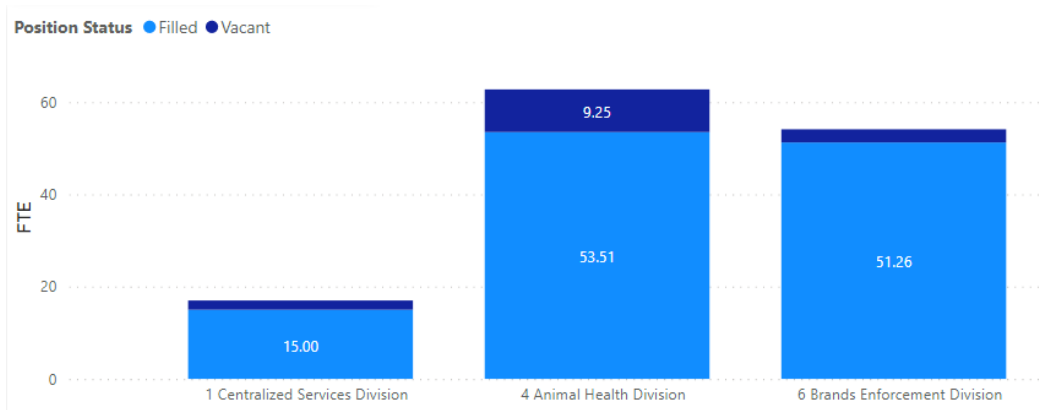
Appropriations of \$70,000 in general fund and \$25,000 in state special revenue for laboratory equipment in the Animal Health Division have not yet been expended.

Transfers

Federal and state special revenue of \$399,481 budgeted for animal health and central services has not yet been expended. Historically the agency expends 8.0% of the funds budgeted for transfers in the first quarter of the year.

Personal Services

The following chart shows the filled and vacant FTE within the agency as of November 1, 2021.



The Department of Livestock has 133.87 FTE funded in HB 2:

- Centralized Services Division – 17.00 FTE
- Animal Health Division – 62.76 FTE
- Brands Enforcement Division – 53.11 FTE

Of the total personal hours available, the agency has utilized 94.5%. As of the end of November, the agency has 14.1 FTE vacant summarized in the following table.

Department of Livestock
Vacancies November 2021

Animal Health Division	FTE	Months Vacant	Years Vacant	Centralized Services Division	FTE	Months Vacant	Years Vacant
Meat Poultry Inspector 1	1.00	3.2	0.3	Purchasing Technician	1.00	5.0	0.4
Agricultural Inspector 2 Egg	1.00	5.0	0.4	Auditing Technician	1.00	22.7	1.9
Microbiologist 1	0.50	5.0	0.4	Division Total ¹	2.00	13.9	1.2
Sanitarian 1	0.50	5.0	0.4				
Meat Poultry Inspector 1	1.00	6.0	0.5	Brands Enforcement Division	FTE	Months Vacant	Years Vacant
Meat Poultry Inspector 1	1.00	9.1	0.8	Livestock Inspector 1	0.50	3.0	0.3
Animal Health Permit Tech	1.00	15.8	1.3	Livestock Investigator 1	1.00	4.5	0.4
Regulatory Program Manager	1.00	23.0	1.9	Livestock Inspector 2	1.00	13.7	1.1
Sanitarian 1	0.50	23.0	1.9	Livestock Inspector 1	0.20	19.5	1.6
Program Manager	1.00	44.9	3.8	STW Brand Insp LEWISTOWN	0.20	21.8	1.8
Veterinarian	0.30	67.9	5.7	Division Total ¹	2.90	9.7	0.8
Program Mgr/Brands Asst Admin	0.50	70.6	5.9				
Division Total ¹	9.30	19.3	1.6				

¹ Division Totals for months and days vacant are weighted averages

Turnover

Since July 1, the department had four retirements, and two persons left state employment. Twenty-five positions received increases in pay for longevity, increasing the expenditures by \$14,500 for the year.

OTHER ISSUES

Update on Decision Packages Approved by the 2021 Legislature

DP 101 - Computer Funding Augment (RST/BIEN/OTO)

FY 2022 10,000, General Fund

FY 2023 10,000, General Fund

The legislature approved a one-time-only appropriation of state special revenue to replace staff computers. The appropriation is funded from livestock per-capita fees. As of November, the agency has not expended against this authority.

DP 103 - Helicopter for Predator Control (OTO)

FY 2022 150,000, State Special Revenue

FY 2023 150,000, State Special Revenue

The legislature approved a one-time-only appropriation of state special revenue to purchase a helicopter for predator control. The purchase will be funded from livestock per capita fees. The agency has purchased a military surplus Bell Helicopter. The agency has expended the \$150,000 appropriation from FY 2023 and has requested that the FY 2023 authority be transferred to FY 2022 so that it can be expended in FY 2022.

DP 405 - Lab Equipment (OTO)

FY 2022 70,000, General Fund

The legislature approved a one-time-only appropriation of general fund to purchase lab equipment dedicated to chronic wasting disease (CWD) sample preparation and testing. Equipment dedicated to (CWD) will help prevent cross contamination in the lab. As of November, the agency has not expended against this authority.

DP 406 - Lab Equipment (OTO)

FY 2022 25,000, State Special Revenue

FY 2023 32,000, State Special Revenue

The legislature approved one-time-only state special revenue for new lab equipment in the histology lab. This will be funded from livestock per capita fees. As of November, the agency has not expended against this authority.

DP 411 - Cooperative Interstate Shipping Program (RST/OTO)

FY 2022 80,000, State Special Revenue and 120,000 Federal Special Revenue

FY 2023 80,000, State Special Revenue and 120,000 Federal Special Revenue

The legislature approved an increase in general fund and matching federal special revenue to support the United States Department of Agriculture Cooperative Interstate Shipping Program. The funding will support expanded levels of inspection and training in the meat and poultry program. As of November, the agency has not expended against this authority.

DP 601 - Additional Brands Rerecord Staff (OTO)

FY 2022 48,612, State Special Revenue

The legislature approved a one-time-only increase of 1.00 FTE and state special revenue for temporary employees required for the decennial brands re-record. This will be funded with livestock per capita fees. As of November, the agency has expended 38.8% of this appropriation.