

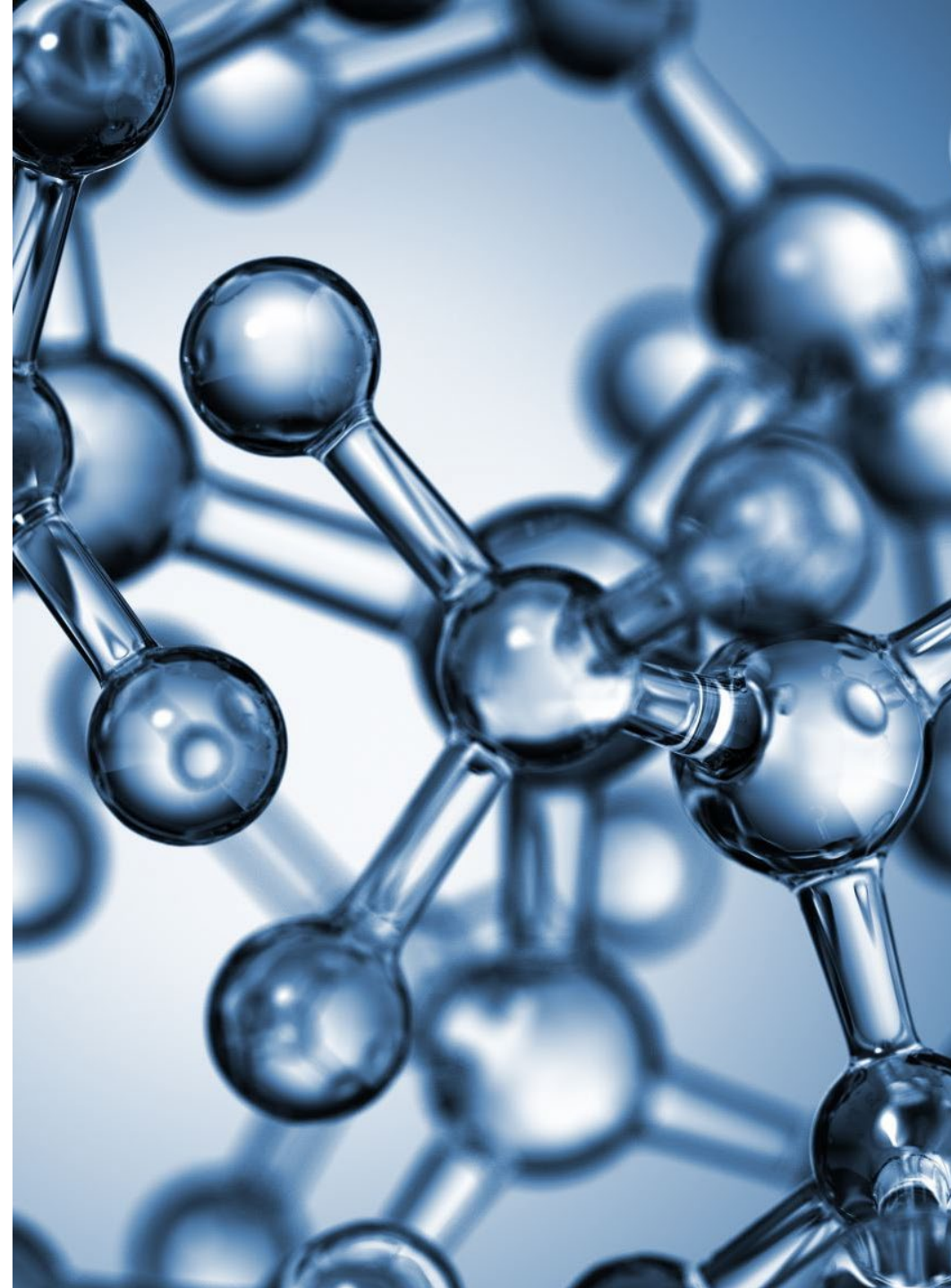
Data Themes & Process

Three Prongs of Legislative Interest

Overall financial
analysis and
session support

Interim Budget
Committees and
tools to support
budget monitoring

Tools and data
analysis for Interim
Committees,
including MARA



Goals



ROBUST TOOLS AND AUTOMATION



GREATER DEPTH OF
UNDERSTANDING



EXPANSION INTO DIGITAL TOOLS
ABILITY TO GET NEW ANALYSTS
EFFECTIVE MORE QUICKLY

Wall Street
Journal Series on
Financial
Efficiencies from
Industry Leaders

- Automate the financial process to boost efficiency and free up employees for analytical tasks
- Get to “why” things happen
- Allows ability to broaden usefulness of the data for operations divisions
- Requires “upskilling” analysts

Link to WSJ [series](#)

Process

Questions from the legislature

Data gathering – Executive's efforts helps here

Understanding data

Model – connections between data

Analysis

Communication and new questions

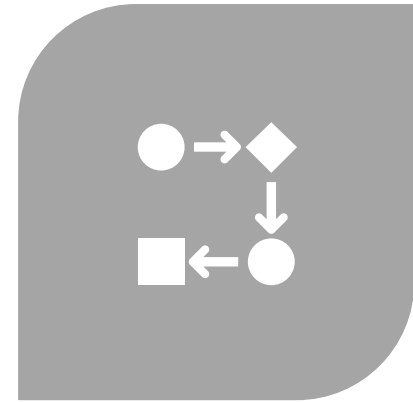
After data sets are modeled - Analysis



LIVING (CAN JUST HIT
REFRESH)



ADDITIONAL PROGRAMMING
CAN BE ADDED



COMBINATION OF THESE
STEPS ALLOWS US TO DIG
DEEPER INTO ISSUES AND DO
IT MORE QUICKLY THAN
BEFORE.

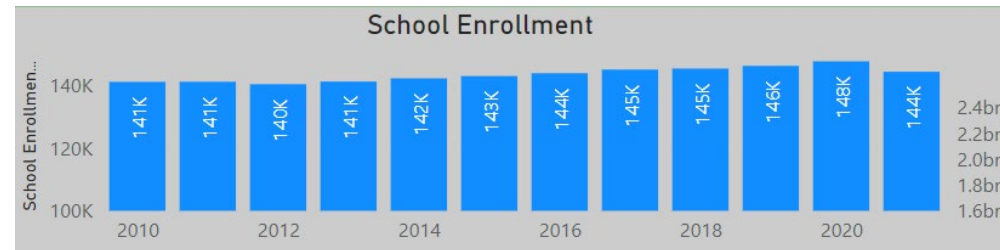
Communication

- BI tools are a digital first product and they do not supplant printed materials, but the transition is occurring and there are advantages in digital products such as:
 - can sometimes better explain complex ideas
 - the ability of a user to focus on an area (like a county) they're interested in
 - greater access to this information by legislators and the public

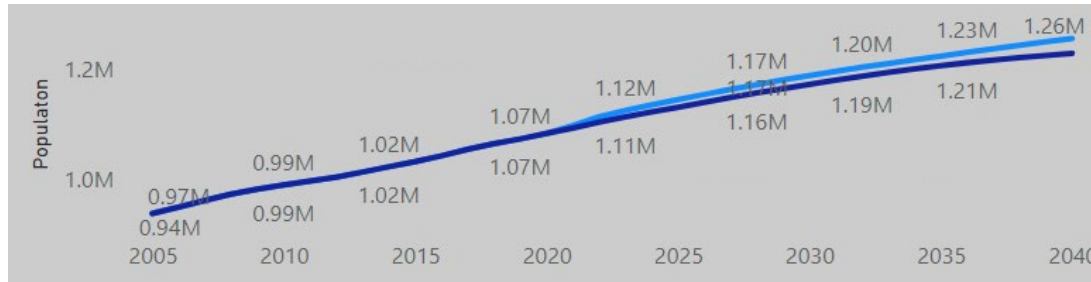
Future Opportunities for Analysis

- The data and modeling structure initiated with MARA can support legislative analysis outside of the MARA context

- Data can be analyzed...
 - Over time



- Across geographic regions, including municipalities and school districts
- With the ability to control for population change



Slicer Options

County

- Beaverhead
- Big Horn
- Blaine
- Broadwater
- Carbon
- Carter
- Cascade

District Name

- Absarokee Elem
- Absarokee H S
- Alberton K-12 Schools
- Albion Elem
- Alder Elem
- Alzada Elem
- Amsterdam Elem
- Anaconda Elem
- Anaconda H S
- Anaconda Elem

Future Opportunities for Analysis

- Assuming that relevant data is available, this structure can be used to create tools for legislative analysis – to support study bills, interim committee research, and other analysis performed by legislative staff
- Example - The relationship between public safety expenditures and population change
- Example - The relationship between population age structure and demand for services