

Missoula Correctional Services

Restitution Paid Q2 FY2024

Residents Released Who Owed
Restitution at the time of Intake

25

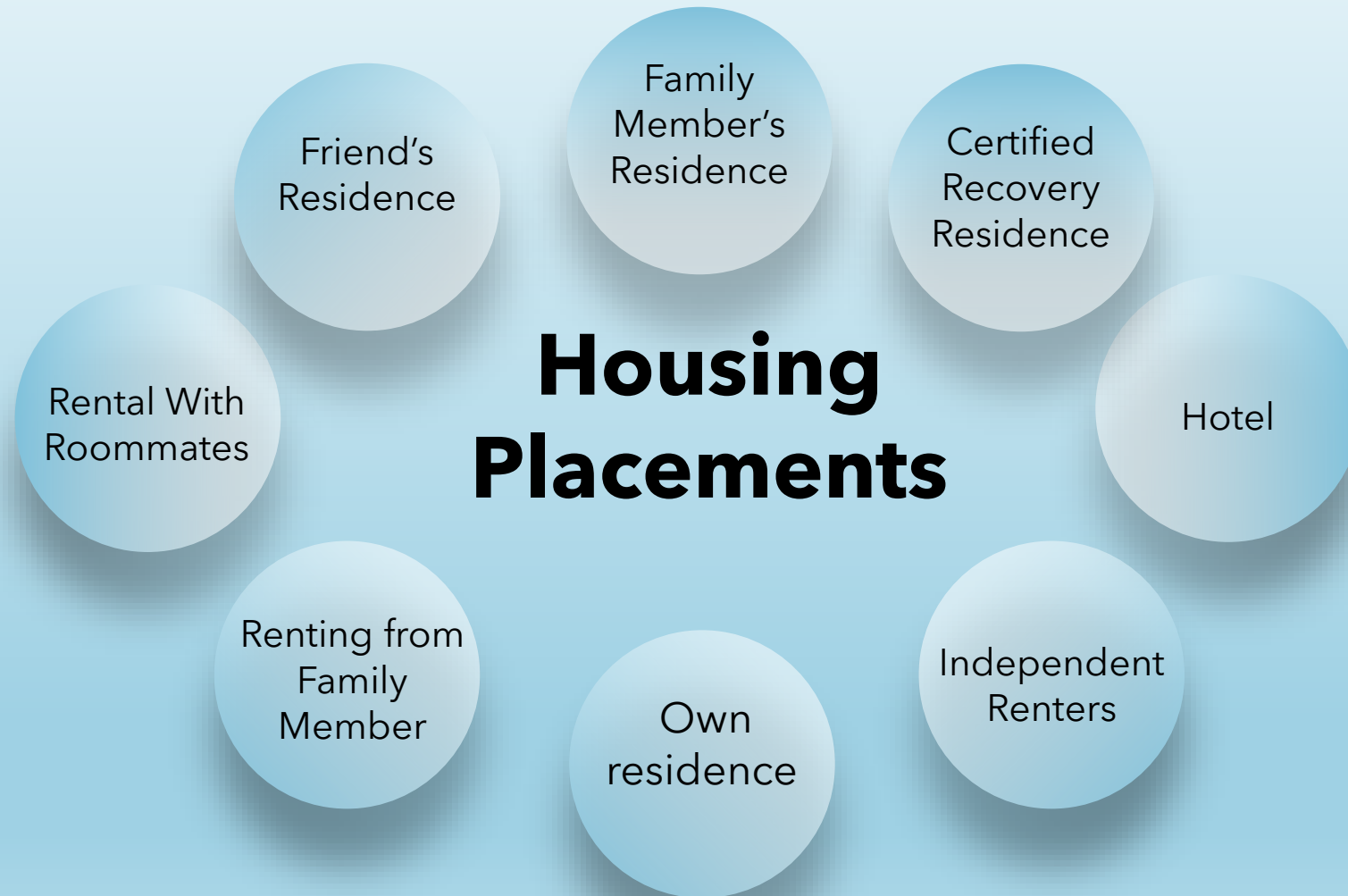
Average Wage

\$15.09

Total Restitution Paid

\$10,613.18

PRC Housing Placements Post Release





195 Days

Average
Length of Stay

Stays in excess of 200 days require the DOC's written
authorization

Program Length of Stay

Great Falls Transitional Center 2023

MCCA

Types of Employment

| | | | | | |
|----------------------|--------------|-------------------|--------------------|----------------------|---------------|
| Assistant Manager | Cashier | Customer Service | Hotel | Supervisor | Sales |
| Attendant | Clerical | Night Auditor | Housekeeping | Maintenance | Laborer |
| Automotive | CNA | Assistant Manager | Clerk | Mechanic's Assistant | Tire Mechanic |
| Disaster Restoration | Construction | Fence Laborer | Installation | Night Auditor | Tire Tech |
| Mechanic | Cook | Food Services | Janitorial | Painter | Wait Staff |
| Caretaker | Crew Leader | General Laborer | Landscape/Lawncare | Roofer | Welder |

Filled Capacity of Treatment Centers

Snapshot as of 3/3/2024

| Facility Type | Sex | Facility Name | Inmate Workers | Residents | Total Population | Operational Capacity |
|------------------|--------------|--|----------------|------------|------------------|----------------------|
| Treatment Center | Male | Connections Corrections Program (Butte) | 0 | 61 | 61 | 62 |
| | | Connections Corrections Program (Warm Springs) | 0 | 87 | 87 | 86 |
| | | Nexus | 1 | 81 | 82 | 82 |
| | | Watch - West | 1 | 86 | 87 | 81 |
| | | Total | 2 | 315 | 317 | 311 |
| | Female | Elkhorn Treatment Center | 0 | 52 | 52 | 51 |
| | | Passages Alcohol And Drug Treatment | 0 | 68 | 68 | 55 |
| | | Total | 0 | 120 | 120 | 106 |
| | Total | | 2 | 435 | 437 | 417 |

Female: 113%
Male: 102%

https://dataportal.mt.gov/t/COR/views/POPReportPublic_15931787918580/SecurePopulation?%3Aiid=2&%3AisGuestRedirectFromVizportal=y&%3Aembed=y

Filled Capacity Pre-release

Snapshot as of 3/3/2024

| Facility Type | Sex | Facility Name | Inmate Workers | Residents | Total Population | Operational Capacity |
|-------------------|--------------|---|----------------|------------|------------------|----------------------|
| Prerelease Center | Male | Billings Pre Release Center | 16 | 165 | 181 | 173 |
| | | Butte Prerelease Center - Male | 14 | 114 | 128 | 120 |
| | | Gallatin County Re-Entry Program | 2 | 43 | 45 | 34 |
| | | Great Falls Transition Center | 8 | 154 | 162 | 171 |
| | | Helena Prerelease Center | 6 | 91 | 97 | 109 |
| | | Missoula Correctional Services (Prerelease) | 4 | 54 | 58 | 94 |
| | | Total | 50 | 621 | 671 | 701 |
| | Female | Butte Prerelease Center - Female | 0 | 59 | 59 | 60 |
| | | Great Falls Transition Center | 2 | 36 | 38 | 34 |
| | | Missoula Correctional Services (Prerelease) | 0 | 22 | 22 | 23 |
| | | Passages Prerelease Center | 13 | 74 | 87 | 76 |
| | | Total | 15 | 191 | 206 | 193 |
| | Total | | 65 | 812 | 877 | 894 |

Female: 107%

Male: 98%

https://dataportal.mt.gov/t/COR/views/POPReportPublic_15931787918580/SecurePopulation?%3Aiid=2&%3AisGuestRedirectFromVizportal=y&%3Aembed=y

Contracted vs Capacity Assessment/Sanction

Snapshot as of 3/3/2024

| Facility Type | Sex | Facility Name | Inmate Workers | Residents | Total Population | Operational Capacity |
|--------------------------------|--------|---|----------------|-----------|------------------|----------------------|
| Assessment and Sanction Center | Male | Missoula Assessment And Sanction Center | 0 | 136 | 136 | 144 |
| | | Pine Hills Correctional Facility | 0 | 81 | 81 | 88 |
| | | Start | 2 | 151 | 153 | 152 |
| | | Total | 2 | 368 | 370 | 384 |
| | Female | Passages Assessment and Sanction Center | 0 | 65 | 65 | 72 |
| | | Total | 0 | 65 | 65 | 72 |
| Total | | | 2 | 433 | 435 | 456 |

Female: 90%
Male: 96%

https://dataportal.mt.gov/t/COR/views/POPReportPublic_15931787918580/SecurePopulation?%3Aiid=2&%3AisGuestRedirectFromVizportal=y&%3Aembed=y

Transitional Living (TL)

At full capacity, the TL program will increase PRC bedspace by 70 beds.



RESUMED FEBRUARY
2023



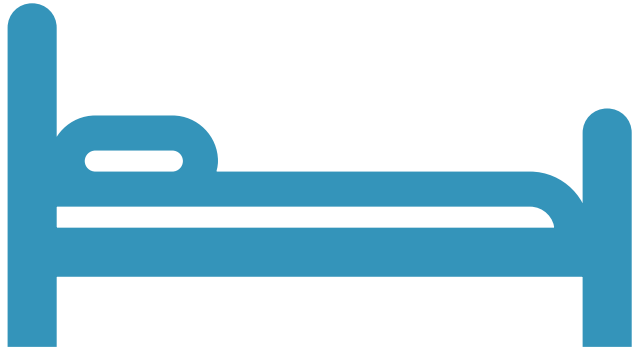
CAPACITY STATEWIDE:
70

TL was funded by the last legislature and placements were authorized by the DOC in Feb 2024.

TL creates additional bed space in PRCs by allowing select offenders to complete the last two months of placement while living in the community.

HB 426

- Authorizes transfer of inmates from secure facilities to pre-release centers up to 14 months prior to their parole board appearances.
- When Administrative Rules are finalized and placements authorized by the DOC, PRCs will increase the number of institutional transfers accepted, creating bed space in prisons.
- Currently institutional transfers comprise only 23% of PRC placements where once this averaged closer to 50%



Immediate Expansion Opportunities

Great Falls 20 PRC Bedspaces



Expansion Opportunity

Billings, Bozeman, Butte, Great Falls, Helena,
Missoula:

Purchase Community Housing for probationers and
parolees



Expansion Opportunity

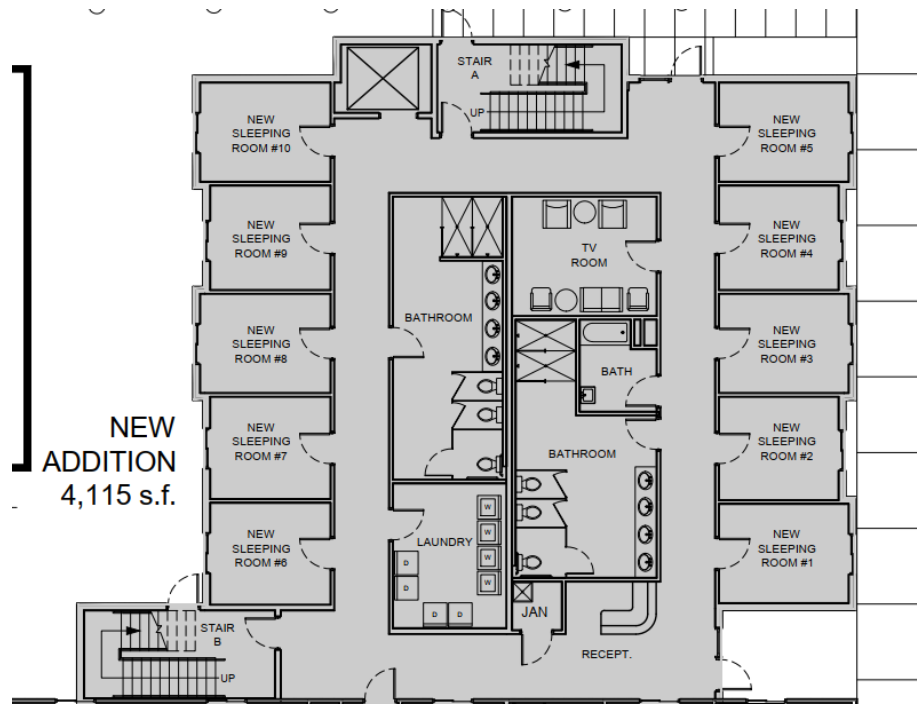
CCCS Secure Sex Offender Program: 68

Passages Women's PRC: build to suit (land owned)

Great Falls PRC: build to suit (land owned)

CCCS: build to suit (land owned)

Elkhorn Treatment Center: 20 Female Beds (with construction)



Expansion Opportunity

Alternatives, Inc.

Alpha House: 60 Bed Addition



Expansion Opportunity

Men's Culinary Arts Program (CAP)
Expand Women's CAP

QUESTIONS

???