

**Rocky Mountain Detention Center  
Hardin, Montana**

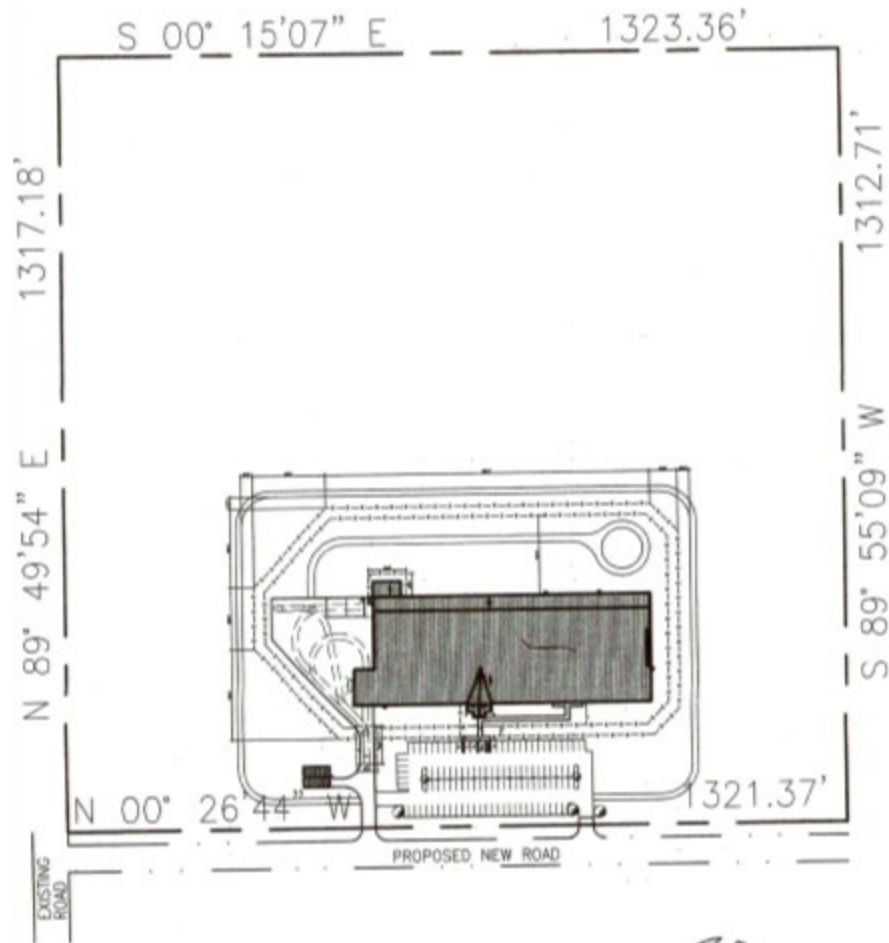


**PRESENTATION to  
HB 5 Select Committee on Corrections Facility  
Capacity & System Development  
12 December 2023**

## Brief History/Timeline

- **2005 Governor Judy Martz Supports Hardin Project Development, Jobs, Economic Development & MDOC Bed Shortage.**
- **April 24, 2006 - Two Rivers Authority, Inc., Issues \$27,015,000 of Project Revenue Bonds.**
- **Spring 2006 - Construction Begins.**
- **August 2007 – Project Completed.**
- **December 2007 - Attorney General Mike McGrath in December states that state law prohibits jails like the one in Hardin from contracting for out-of-state prisoners.**
- **December 2007 – Holland & Hat Engaged to File Declaratory Judgment Action against the State of Montana, etc. seeking judicial interpretation of Montana law respecting the multijurisdictional detention center constructed within the City of Hardin by Two Rivers Authority.**
- **June 2008 – Court Rules in Favor of TRA/Hardin re: Out-Of-State Prisoners.**
- **June 2008 - State Will Not Appeal District Court Ruling.**
- **Next Challenge is American Correctional Association – Daylight Compliant - Windows vs. Skylights.**
- **December 2013 – Patrick Keohane Inspection – Facility Can be Accredited.**
- **February 2019 – Department of Interior/Bureau of Indian Affairs, Lease the Detention Center.**

# Site Plan – 40-Acres, 20+ Acres Available for Development



OVERALL SITE PLAN

SCALE: 1" = 300'-0"

HMAP901



## **Existing Secure, Adult Detention Facility**

**464-bed secure, adult detention facility that is designed to be expandable.**

**Approximately 92,273 square feet.**

**Primary Administrative Area, 5,568 square feet and contains: waiting area, public restrooms, Warden's office, 5 additional offices, evidence room, staff toilets, records, staff lounge, conference room, training room, staff locker rooms, and supply rooms.**

**Secondary Administrative Area, 1,742 square feet and contains lobby, reception area, men and women toilets, supply room and 6 offices.**

**Secure Area , 83,463 square feet and contains: (36) separation cells, (12) single cells, (24) 2-person cells, (10) 8-person multi-occupancy cells and (12) 24-person dormitories. 4 offices are located in the Secure Area. There are (2) multi-purpose rooms, (3) classrooms, (1) library, (2) counseling rooms, (1) special purpose room for video conferencing, (1) commissary and (2) vocational rooms. Both contact and non-contact visitation area provided for detainees and their visitors.**

## Existing Secure, Adult Detention Facility

The central control room is located in the secure area, along with a medical area, dental office, barber, commissary, and indoor recreational areas.

The kitchen is fully equipped with the appropriate kitchen equipment and food storage areas and is designed to accommodate food preparation for up to 500 detainees/staff and is expandable to approximately 1000 – 1,500 detainees/staff.

The intake area has ample detainee intake seating, intake counter, records, male and female holding cells, detainee clothing issue, detainee property storage, and release/transfer area. The ceilings in the intake area are detention grade concrete ceilings or high-impact security board. The floors are sealed concrete and the walls are grouted, reinforced concrete masonry units and concrete panels.

The vehicular sallyport is fully secured and accommodates a full-size inter-city bus.

## Purpose of Presentation

- **Explore Opportunities Under HB0005 for the State to:**
  - **\*Acquire the Project and Build a Facility on Extra 20-Acres.**
  - **\* Acquire for Future Needs.**
  - **Lease With Option to Purchase and Build a Facility on Extra 20-Acres.**
  - **Lease with Option to Purchase and Lessor Will Build to Suit on Extra 20-Acres.**
- **Bondholders Are Flexible and Open to Discussions/Ideas.**
  - \* Subject to Existing BIA Lease.**