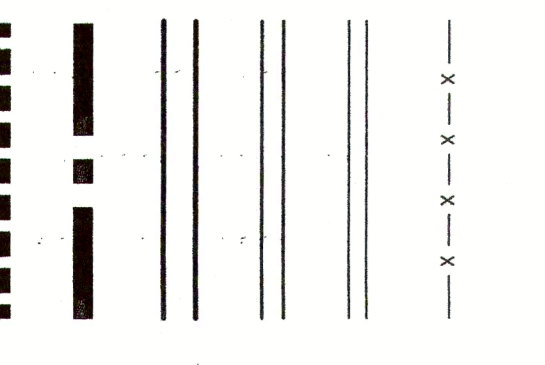
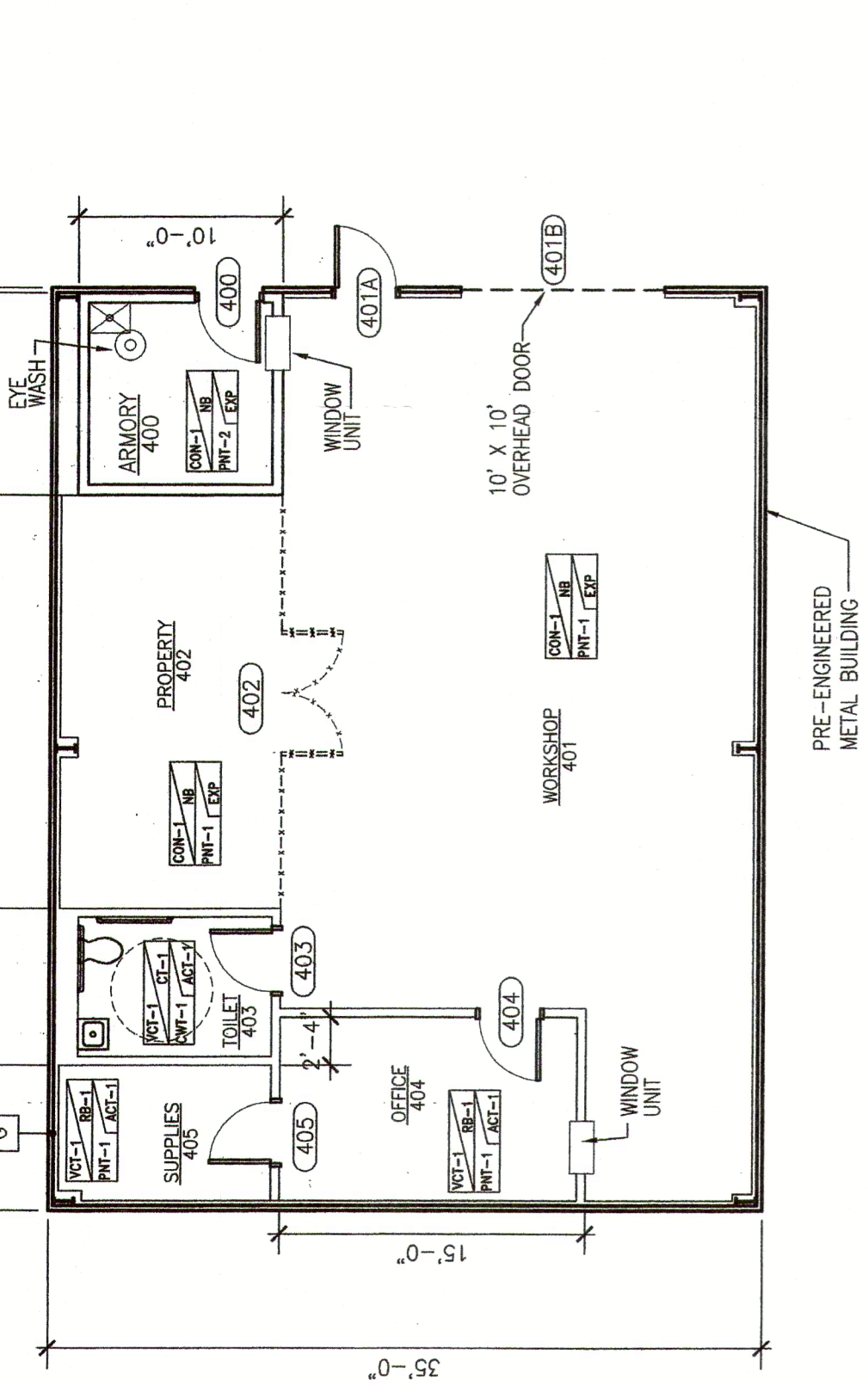


CELL TYPE	NO.	TOTAL BEDS
SEPARATION CELLS	36	36
SINGLE CELLS	12	12
DOUBLE CELLS	24	48
8 BED MULTI-OCCUPANCY	10	80
24 BED MULTI-OCCUPANCY	12	288
<b>TOTAL # BEDS</b>		<b>464 BEDS</b>
<b>TOTAL S.F.</b>		<b>92,273 S.F.</b>

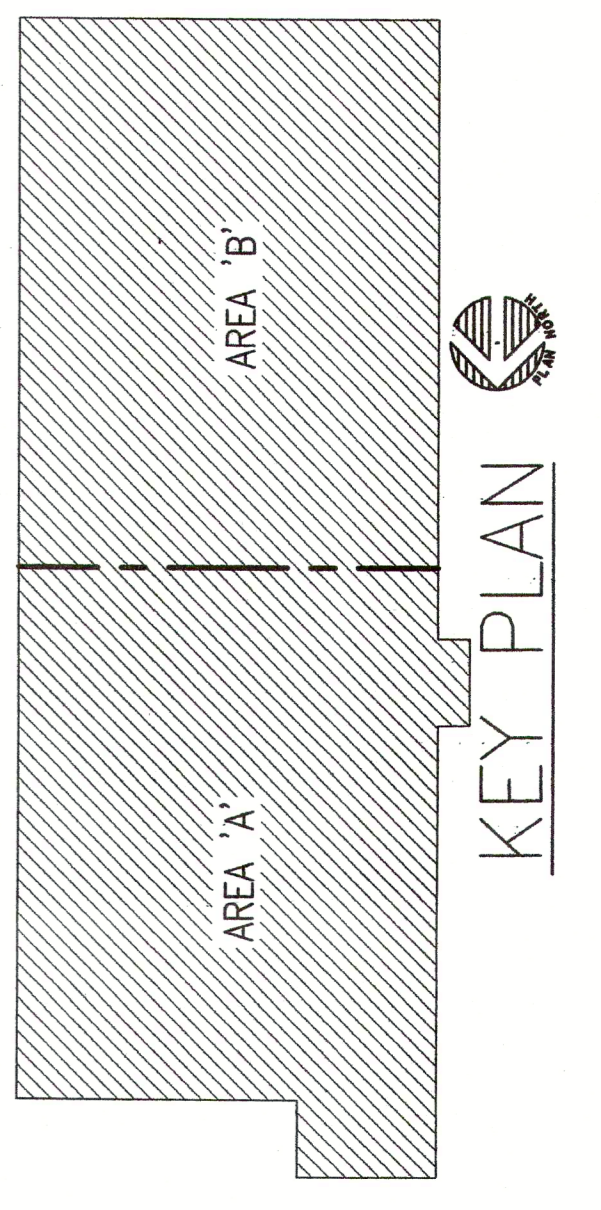
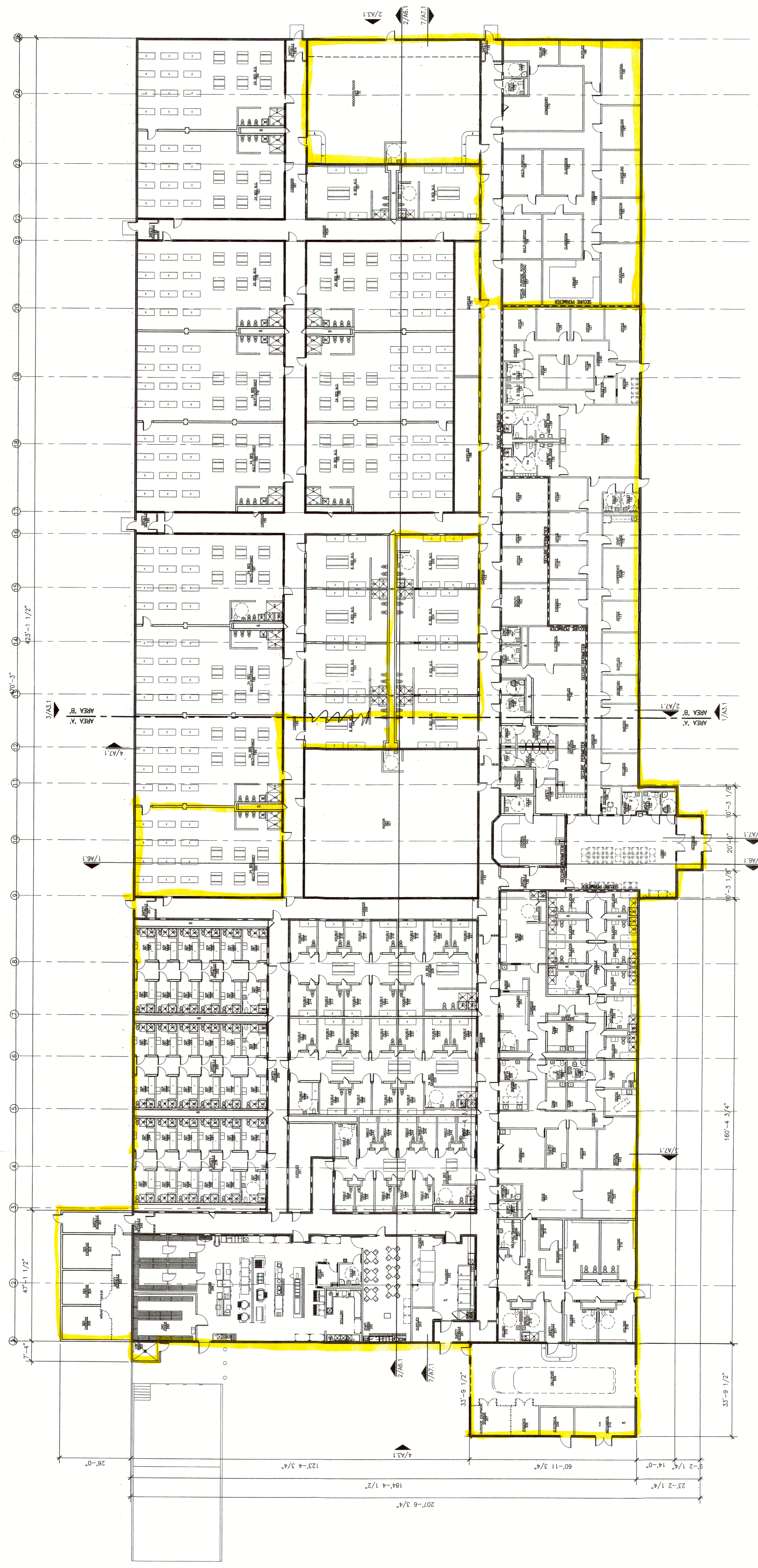
SECURITY PERIMETER WALL CONSTRUCTION



- SEE 1/A8.1 FOR PARTITION TYPES.
- SEE KITCHEN DIMS FOR EQUIPMENT & EQUIPMENT LOCATIONS. FLOOR FINISH TO FLOOR DRAINS TO ALLOW FOR PROPER CLEANING. NON-SLIP SURFACE ON KITCHEN FLOOR.
- FLOOR FINISH TO ALL DRAINS. DRAINS NOTED FOR REFERENCE ONLY. SEE PLUMBING DRAWINGS FOR DRAIN INFO. SLOPE TO DRAINS NOT TO EXCEED 1:12 IN ACCESSIBLE REC YARDS.
- NON-SLIP TILE ON ALL DETENTION SHOWER AND DRY OFF AREA FLOORS. FRP ON ALL DETENTION SHOWER WALLS. TILE ON ALL ADMINISTRATIVE SHOWER WALLS.
- SEE 1/A0.1 FOR OVERALL BUILDING DIMENSIONS, BUILDING/WALL SECTION NOTATIONS, & RATED WALL/SECURE PERIMETER LOCATIONS.
- ALL OUTSIDE CMU WALL CORNERS TO BE BULLMOUSED CMU BLOCK.
- MASONRY CONTRACTOR TO GROUT AND POINT UP THE GAP BETWEEN THE TOP OF THE CMU WALL AND THE HOLLOW CORE PLANKS.
- SEE A0.1 FOR TYPICAL ACCESSORIES REQUIREMENTS AND REQUIRED CLEARANCES.
- AT EXERCISE AREAS AND SALTYPORT DENOTES ACCESSIBLE RAMP - SLOPE NOT TO EXCEED 1:12
- FIRE SPRINKLER PLAN/CALCULATIONS AND METAL BUILDING DRAWINGS ARE DEFERRED. SUBMITTALS AND ARE NOT INCLUDED IN THIS SET OF DOCUMENTS.
- DASHED FURNITURE AND EQUIPMENT BY OTHERS.
- FIRE EXTINGUISHERS ARE TO BE SPACED EVERY 75'-0", BUT ARE PROVIDED BY OWNER THROUGH FF&E.
- SECURE CHAIN LINK AT ROOF TO METAL BUILDING STRUCTURE.



**2 MAINTENANCE BUILDING FLOOR PLAN**  
SCALE: 1/8" = 1'-0"



**1 OVERALL FLOOR PLAN**  
SCALE: 1/16" = 1'-0"

TWO RIVERS FEDERAL SUPPORT AND DETENTION FACILITY  
HARDIN, MONTANA

**CORTLAND MORGAN ARCHITECTS**  
5800 Woodland Dr.  
Dallas, Texas 75226  
(214) 368-3887

LEICED ARCHITECT  
MONTANA  
1987

Date: 05/31/08  
Project No.:  
Drawn By:  
Checked By:  
Sheet Title:  
Drawing No.:  
FLOOR PLAN  
A2.1

FOR CONSTRUCTION