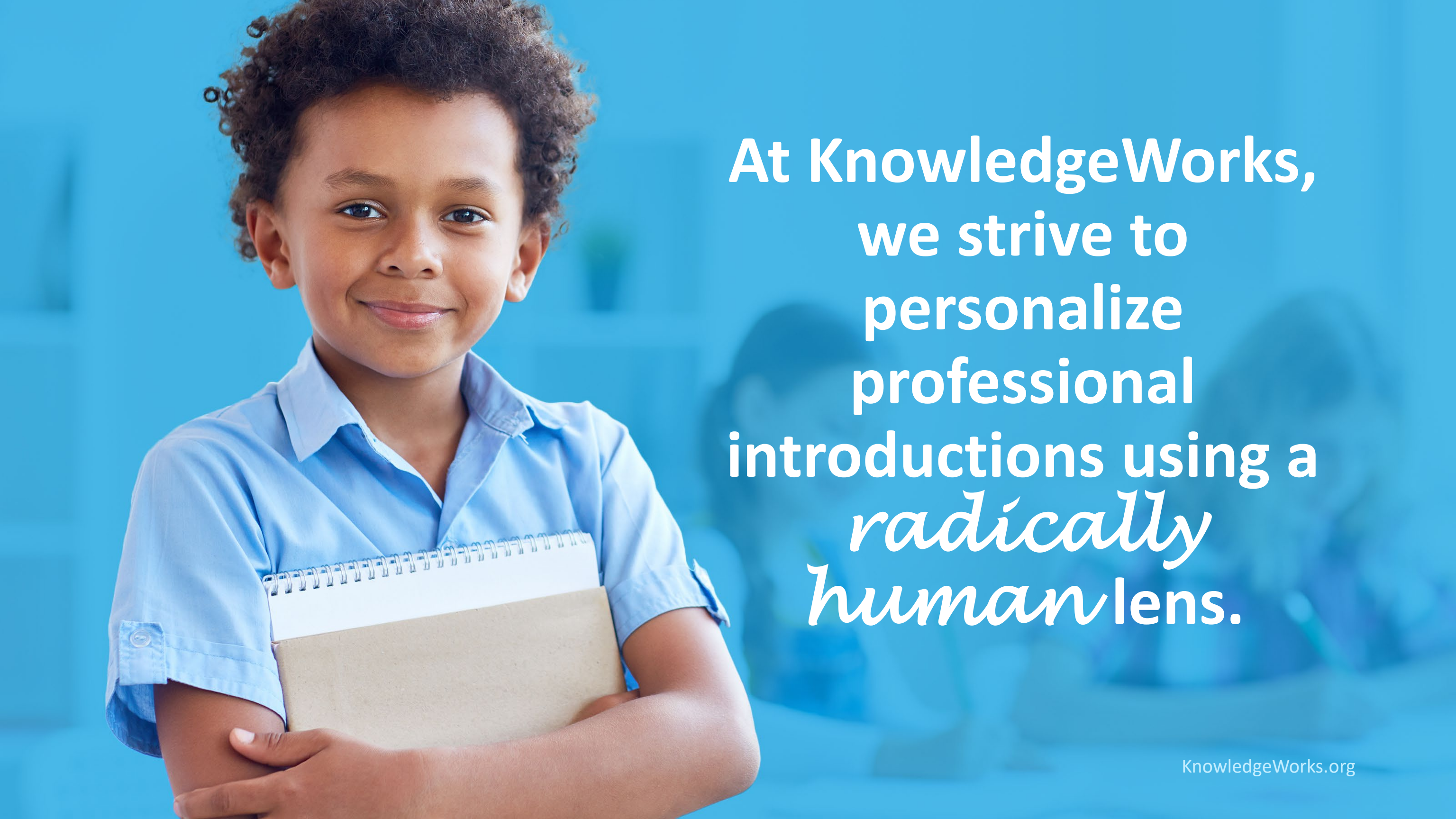




Welcome

KnowledgeWorks

Virgel Hammonds
Chief Learning Officer
[@virgelHammonds](#)

A young child with curly hair, wearing a light blue button-down shirt, is smiling and holding a spiral-bound notebook with a brown cover. The background is a blurred classroom setting with other students and a blue wall. The text is overlaid on the right side of the image.

At KnowledgeWorks,
we strive to
personalize
professional
introductions using a
radically
human lens.



Changing
the culture of
education
through
**personalized,
competency-
based learning.**

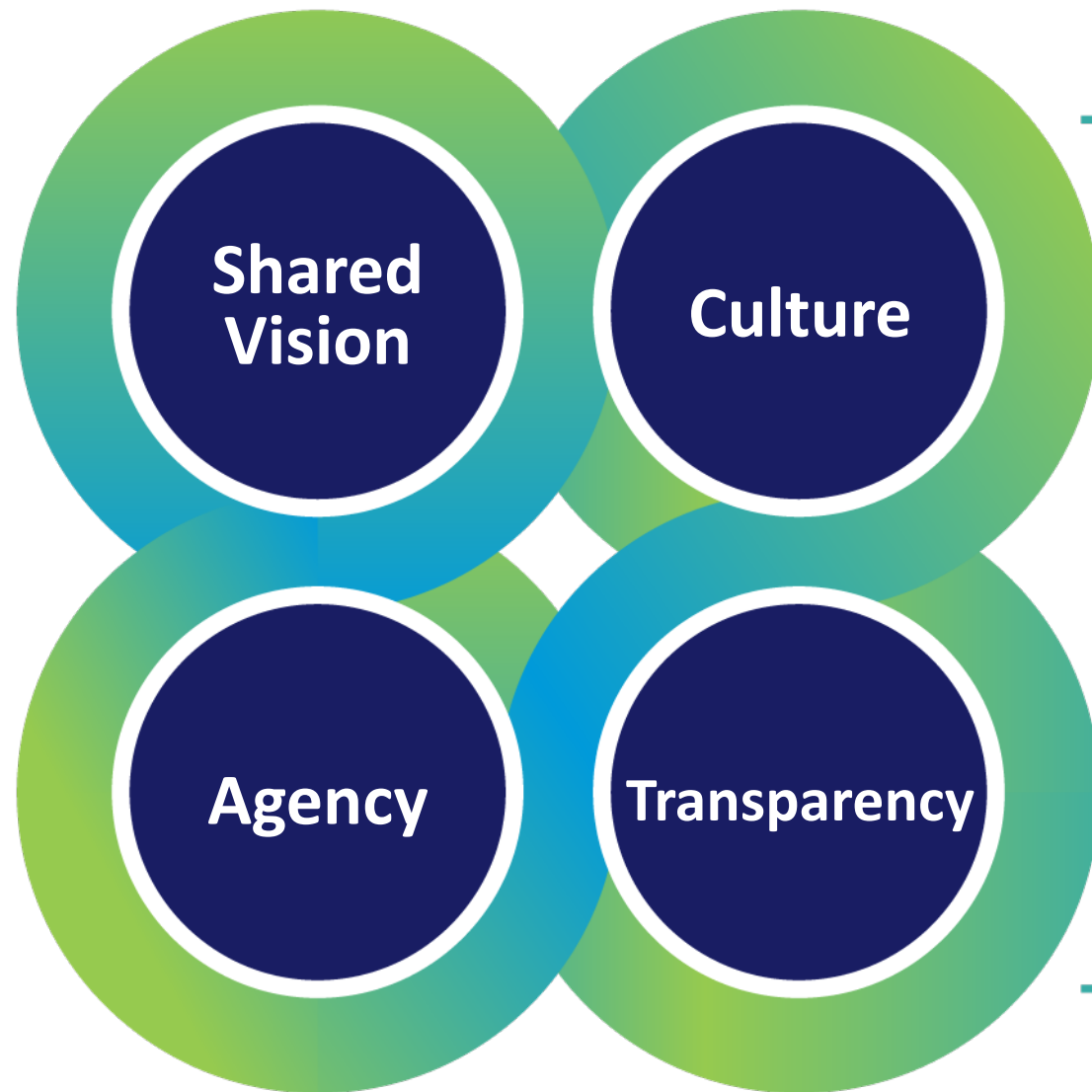
What is Personalized, Competency-Based Learning?

- Learner agency
- Timely, actionable assessments
- Customized learner supports
- Progression upon mastery
- Flexible learning paths
- Strategies and systems to ensure equity
- Rigorous academic and social-emotional learning targets

Adapted from the Aurora Institute



12 Conditions for Scaling Personalized, Competency-Based Learning



Partnerships

Instruction

**Comprehensive
Assessment Systems**

**Professional Development
and Learning**

Curriculum

Learner Supports

**Flexible Learning
Environments**

**Leadership
Development**

State of CBE State Policies

Data from a recent ECS 50 state survey suggest that, at minimum, the state of play is as follows:

- 15 states have developed **graduate profiles**
- 12 states have established **state-level competencies**
- 25 states permit **graduation requirements** to be satisfied through student-centered assessment options
- 39 states allow students to **receive course credit** based on these types of assessments

State of CBE State Policies *Continued*

- 18 states allow districts to have flexibility to make **competency determinations for graduation requirements**
- 31 states have established **innovation schools or zones**, which allow K12 schools or districts to adopt CBE practices; 18 states have pilot programs
- 17 states provide **grant funding** to build capacity for student-centered instruction
- 13 states have policies allowing for **alternative instructional time** models

Legislative Action on CBE

2022 Legislative Session

- 225 bills introduced in 40 states
- 44 bills related to creating a culture of innovation
- 38 bills related to balanced assessments
- 76 bills related to equitable conditions for learning

2023 Legislative Session

- 125 bills introduced in 36 states (*as of April 3*)
- 17 bills related to creating a culture of innovation
- 6 resolutions signaling interest in expanding CBE
- 16 bills related to balanced assessments
- 52 bills supporting student learning pathways

ELOs



Extended Learning Opportunities

→ Outside the Classroom

→ Credit-Bearing

→ Community-Based

elo@jmg.org

WHAT ARE ELOs?



Extended Learning Opportunities (ELOs) are hands-on, credit and/or credential bearing courses outside of the traditional classroom with an emphasis on community-based career exploration.

ELOs are highly personalized opportunities for students to engage in learning in ways that make sense for them and connect their learning to everyday life in relevant and meaningful ways.

That means ELOs are a unique mix of academic instruction and assignments (ex. papers and presentations) alongside experiential learning components (ex. project-based learning options, internships, and job shadows).

OUTSIDE THE CLASSROOM

The basis of an ELO is that it is a personalized experience that is done in a non-traditional way. Any experience that happens exclusively in a classroom context—while valuable—is not a true ELO.

CREDIT/CREDENTIAL-BEARING

What sets ELOs apart from traditional enrichment options (clubs, sports, etc.) is that they are designed as credit or credential bearing options. This requirement is important to increasing equity in our schools.

COMMUNITY-BASED

ELOs require the support of local communities and are designed to highlight local expertise, expose students to career options in their communities, and offer real-life application of student learning.

THE VALUE

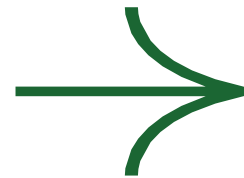


Students envision their future selves, recognize the value of their skills, and take charge of their future.



Flexible

ELO experiences are designed to be incredibly flexible, meaning they can function in-person, remotely, or in a hybrid setting. They can be designed to make best use of your specific resources.



Personalized

ELOs provide an opportunity to customize courses for those students who need more support, specific motivation, or excel in a certain area. They provide the chance to meet every student where they are.



Relevant

Every ELO is designed to connect real-life experiences with learning standards. This format means the content is highly relevant and engaging, often including valuable career exploration.

JMG'S SUPPORT STRUCTURE



1 Coaching Model

Ensuring school districts have access to the necessary human capital support for ELO program development.

4 Student Credit Support

Engaging with policy, practices, and opportunities that impact ELOs and credit and providing a structure and learning management system to support students in core and elective credit attainment for ELO opportunities.

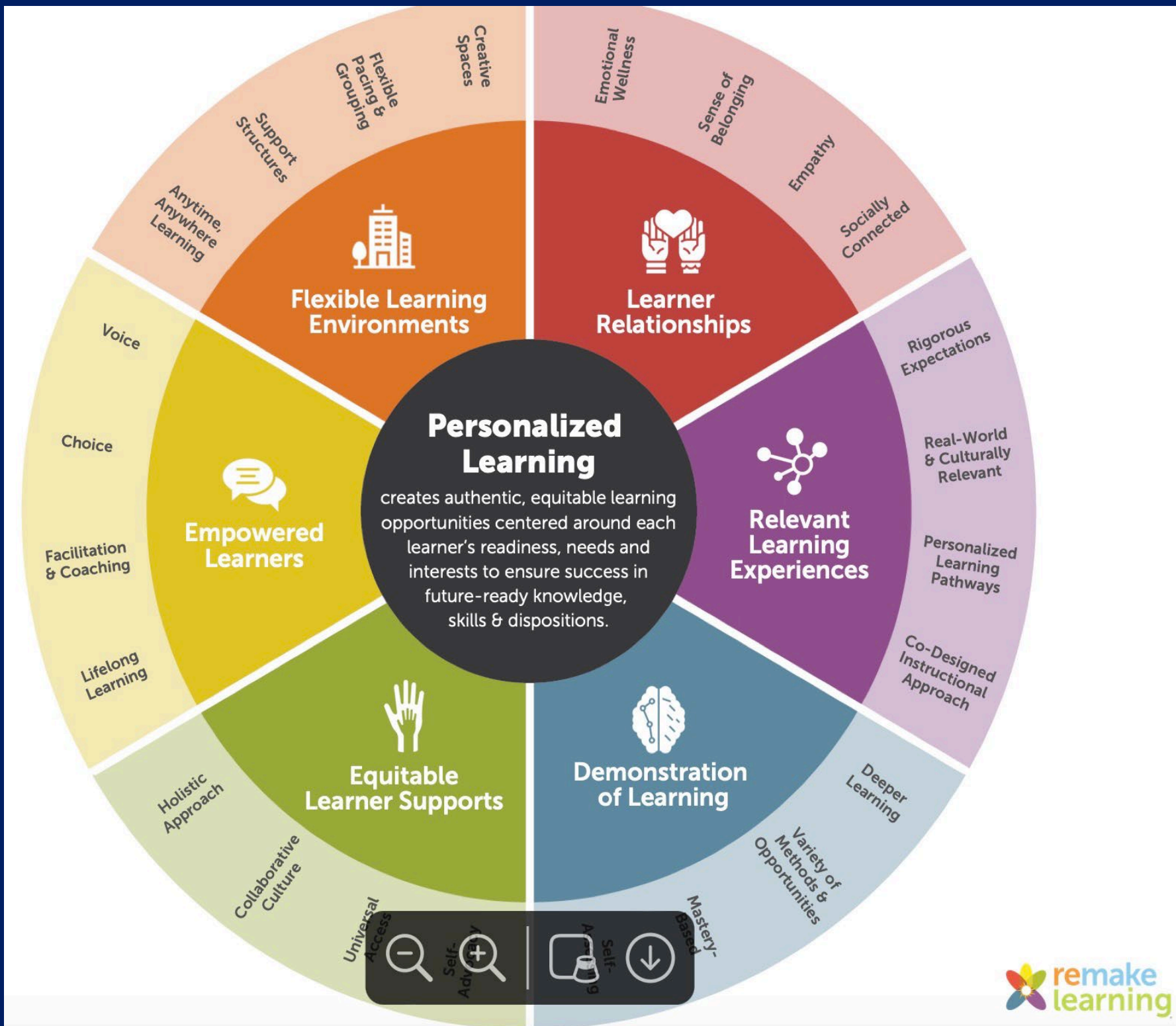


2 Personnel Training

Building a PD training continuum and PD badging system through accredited partners to support school personnel at all ELO experience levels and a variety of ELO program formats.

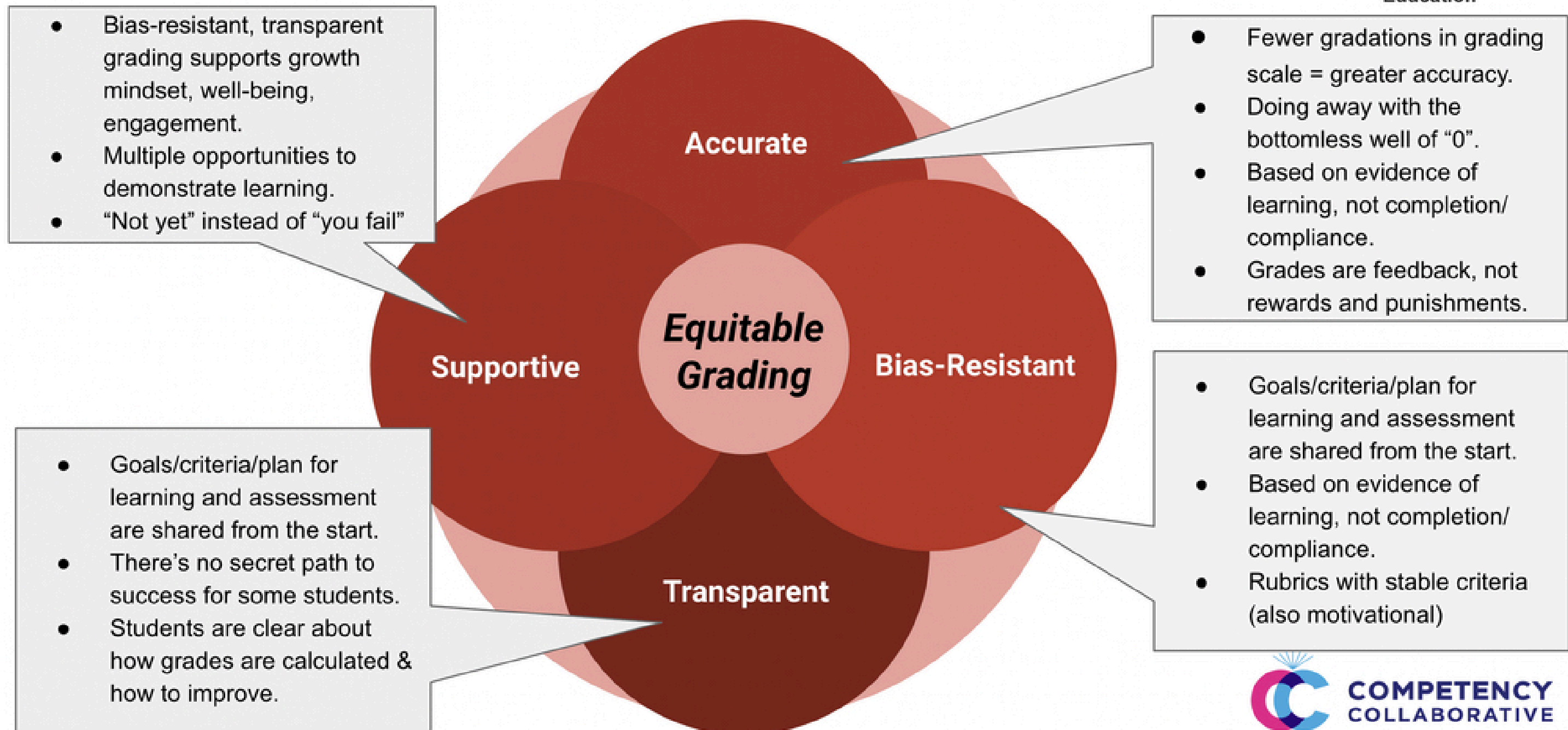
3 Business Partner Prep

Preparing businesses to engage with ELO programs, and students, safely and effectively.



Pennsylvania's Personalized Learning Working Group Framework

Competency-based Grading for Accuracy, Equity, and Social-Emotional Wellbeing





 Explore

 Launch

 Transform



Explore

*Designed to
provide foundation
for personalized,
competency-based
learning*

Educators at all levels and roles can learn foundational components and begin to develop an understanding of how personalized, competency-based learning can transform teaching and learning in their school/district.

Launch

*Designed for school
and district teams
ready to shift
traditional teaching
and learning practices*

Teams are introduced to immediately applicable personalized, competency-based learning strategies while also focusing on how these strategies fit together to transform the larger education system.

Transform

*Designed for district
teams ready to
transform to a more
equitable system of
teaching and learning*

Teams implement a district-wide system of personalized, competency-based learning.

