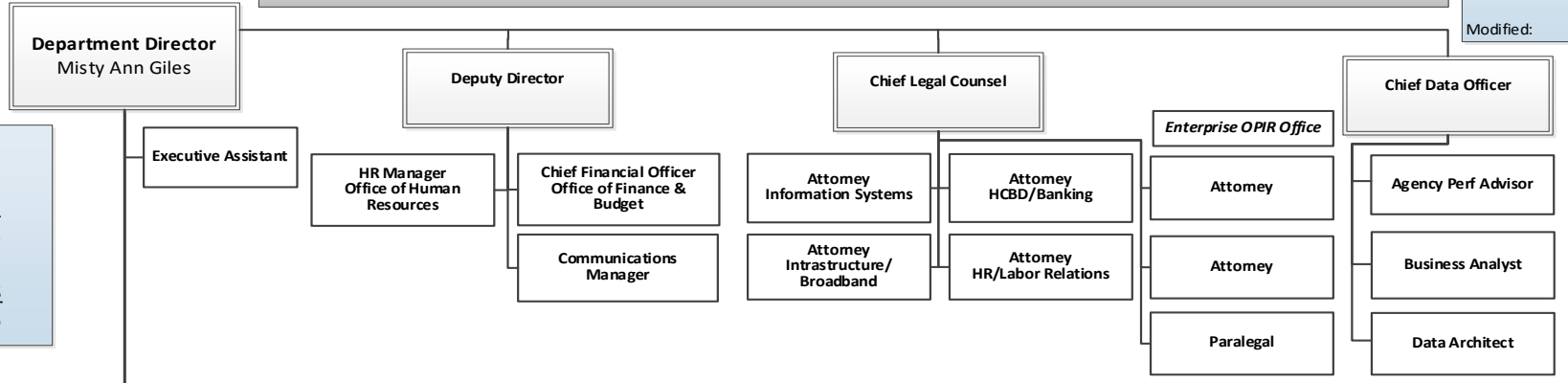


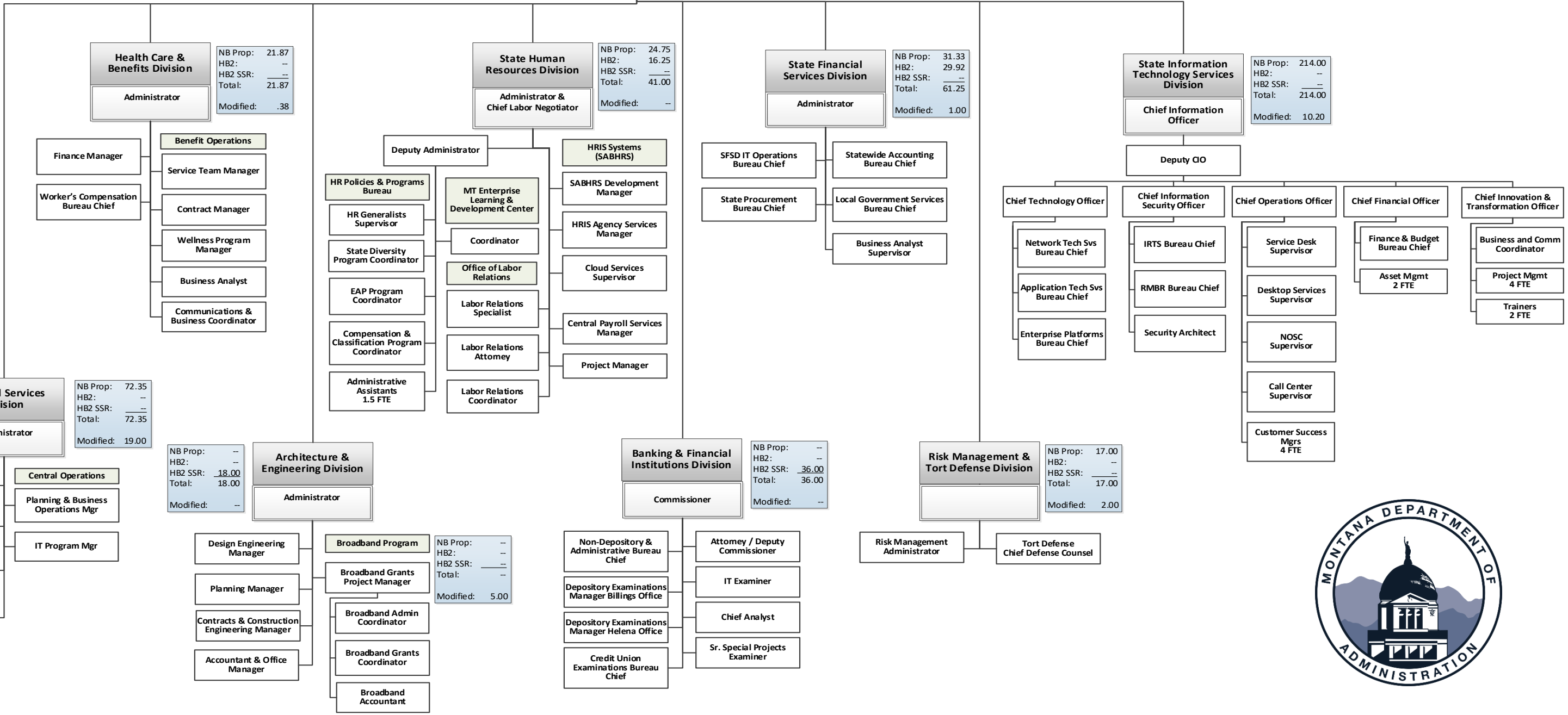
Department of Administration

Last Updated:
12/11/2023

NB Prop: 27.51
HB2: 2.50
HB2 SSR: --
Total: 30.01
Modified: --



NB Prop: 408.81
HB2: 48.67
HB2 SSR: 54.00
Total FTE: 511.48
Modified FTE: 37.58
Grand Total: 549.06



Health Care & Benefits Division
Administrator
NB Prop: 21.87
HB2: --
HB2 SSR: --
Total: 21.87
Modified: .38

State Human Resources Division
Administrator & Chief Labor Negotiator
NB Prop: 24.75
HB2: 16.25
HB2 SSR: --
Total: 41.00
Modified: --

State Financial Services Division
Administrator
NB Prop: 31.33
HB2: 29.92
HB2 SSR: --
Total: 61.25
Modified: 1.00

State Information Technology Services Division
Chief Information Officer
NB Prop: 214.00
HB2: --
HB2 SSR: --
Total: 214.00
Modified: 10.20

General Services Division
Administrator
NB Prop: 72.35
HB2: --
HB2 SSR: --
Total: 72.35
Modified: 19.00

Architecture & Engineering Division
Administrator
NB Prop: --
HB2: --
HB2 SSR: 18.00
Total: 18.00
Modified: --

Banking & Financial Institutions Division
Commissioner
NB Prop: --
HB2: --
HB2 SSR: 36.00
Total: 36.00
Modified: --

Risk Management & Tort Defense Division
NB Prop: 17.00
HB2: --
HB2 SSR: --
Total: 17.00
Modified: 2.00

Broadband Program
NB Prop: --
HB2: --
HB2 SSR: --
Total: --
Modified: 5.00

