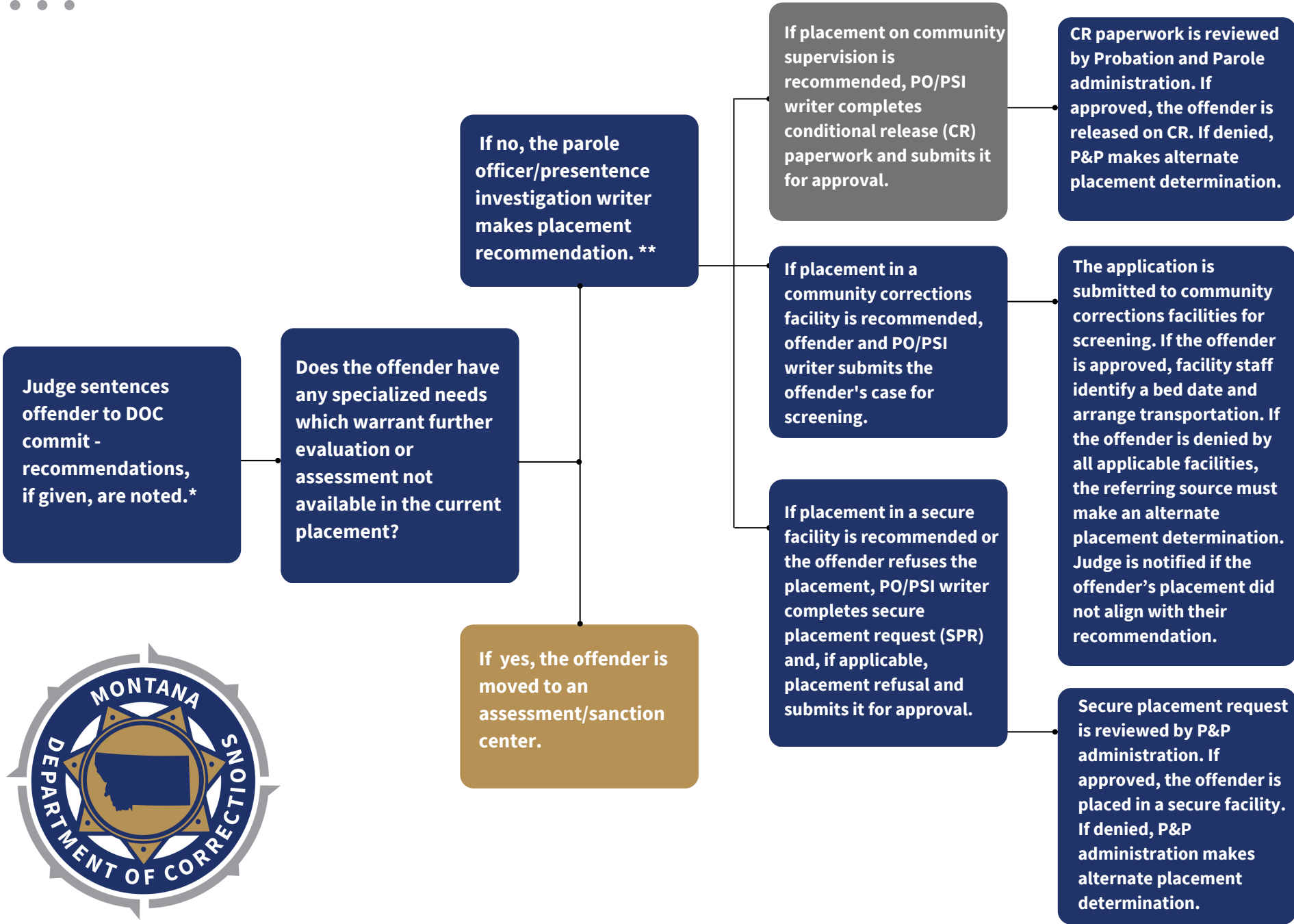
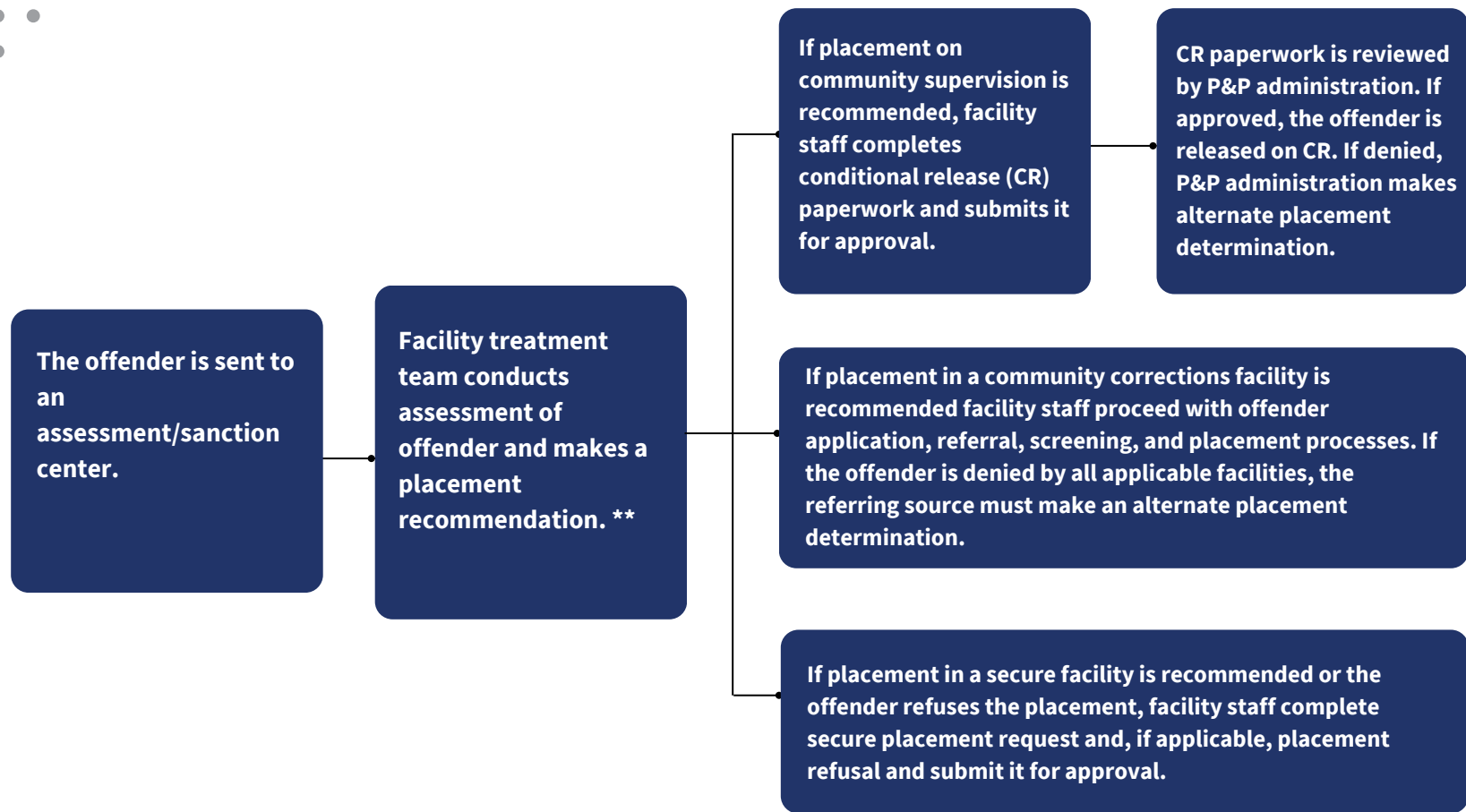
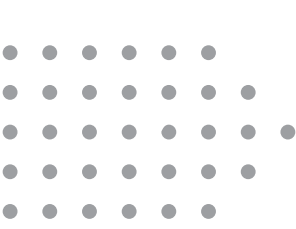


NEW DOC COMMITMENT PLACEMENT FLOW CHART





*This process is applicable to new DOC commitments resulting from new offenses or revoked suspended/deferred sentences. It does not apply to offenders already on parole or conditional release who receive a new DOC commitment.

**Placement determinations are made using information regarding an offender's criminogenic risks/needs; court orders and judge's placement recommendations; circumstances of the offense; criminal history; placement history; results of secondary/specialized assessments/evaluations; victim input and related information; offender-identified requests, goals, and release plans; facility conduct; and support structure.