



# **Montana Community Corrections Association (MCCA)**

Section D 1/26/2023

# Montana Community Corrections Association

## Erin McGowan – Executive Director

erin@smithandmcgowan.com

Amy Tenney

Boyd Andrew

CEO

atenney@boydandrew.com

Mike Thatcher

CCCS

CEO

mthatcher@cccscorp.com

David Armstrong

Alternatives

CEO

darmstrong@altinc.net

Alan Scanlon

Great Falls Transition Center

Executive Director

alan@gfprc.org

Sue Wilkins

Missoula Correctional Services

Executive Director

swilkins@m-c-s-inc.org

**MCC**

- + Employs more than 800 staff in administration, security, treatment, medical and case management services

Almost 2,000 individuals served each day

- + Eight Pre-Release Centers.
- + Six Inpatient Treatment Programs.
- + Two Assessment and Sanction Centers

Focus is re-entry, treatment, and jail diversion

Public Safety is priority

Substance Use, Mental Health, and Criminogenic Based treatment is provided

Success rates are higher than traditional incarceration

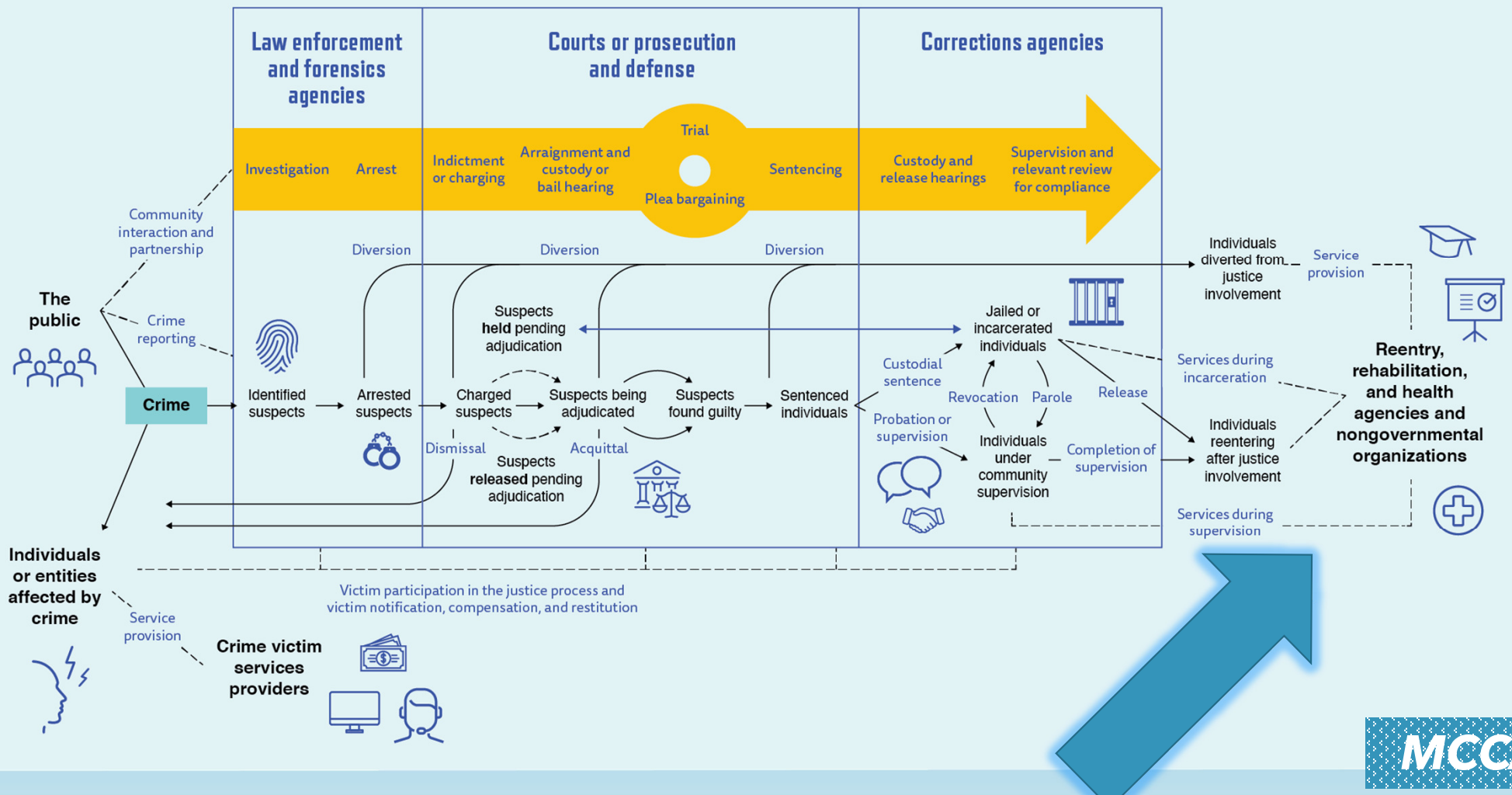


# MCCA

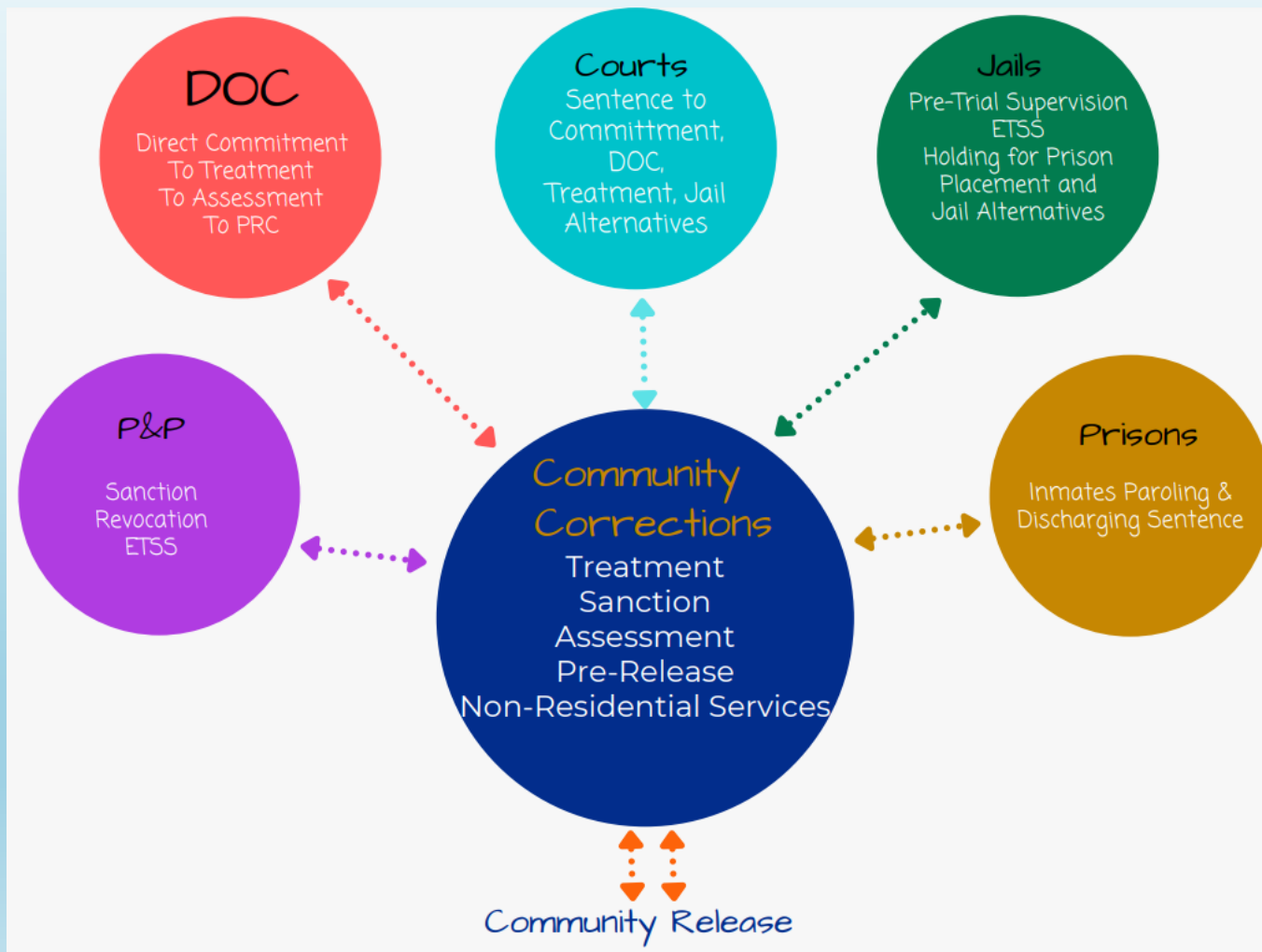
A group of 5 NON-PROFIT organizations that operates 16 treatment, assessment, sanction, and pre-release centers founded in 2015

# MCCA

# Corrections Industry: Confused yet?



# Community Corrections in Montana



# Pre-Release Facilities



Helena Pre-Release  
Center

105 beds



Alpha House

173 Beds



Passages Pre-Release  
Center

76 Beds



Butte Pre-Release

120 beds



Women's Transition  
Center

60 Beds

**MCCA**



# Pre-Release Facilities/Assessment & Sanction Centers



Missoula Pre-Release

117 Beds



Great Falls Transition  
Center

205 Beds



Gallatin County Re-entry  
Center

40 Beds



START

152 Beds



ASRC

60 Beds

# Treatment Facilities



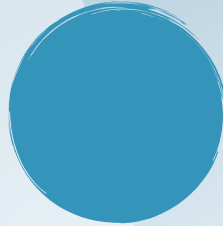
Elkhorn Treatment  
Center

46 Beds



Passages Alcohol and  
Drug Treatment

55 Beds



Watch- West

81 Bed

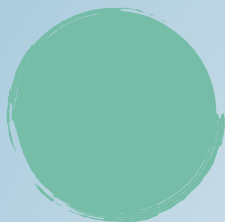


Nexus

84 Beds

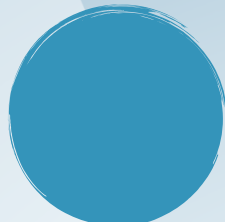


# Treatment Facilities cont.



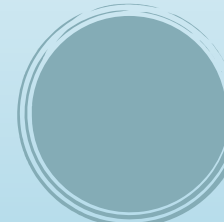
Connections Corrections  
Program-West

86 Beds



Connections Corrections  
Program -East

62 Beds



# History of Community Corrections in Montana

A Formula That Works!

## Part of the Community

- Understands community needs—listens and responds
- Not viewed as part of the bureaucracy
- Public safety is prioritized

## Flexibility & Adaptability

- Less red tape
- Can more easily respond to changing needs
- Innovative and Efficient

## Proven Stability

- 40+ years of effective services
- Expansion capability
- Less expensive to tax payer

**MCCA**

*Prerelease Center staff assist residents with the following areas to prepare them to re-enter the community:*

- + Secure suitable, stable housing
- + Secure and maintain gainful employment
- + Appropriate referrals to community-based programs for Substance Use Disorder and/or Mental Health Treatment and Aftercare
- + Enroll in Medicaid if appropriate
- + Enroll in SSI/SSDI if appropriate
- + Tax Assistance
- + Secure Proper Identification - Driver's License, State ID, Birth Certificate, Social Security Card

# Prerelease Centers ARE Re-Entry



## Recidivism Statistics- Pre-Release Centers

2016-2019 Persons from Prison who return to prison within 3 years

**Federal**

**Overall:  
~44%**

**State**

(FY19)

**Overall: 36.8%**

**Men: 37.6%**

**Women: 31.6%**

**Pre-Release**

**Overall: 24.5%**

**Men: 26.5%**

**Women: 14.6%**

**MCCA**

## Recidivism Statistics- Pre-Release Centers

2016-2019 Pre-Release Residents from All Referral Sources (Including DOC Commits) whom enter prison within 3 years

**Overall**

**21.1%**

**Women**

**15.6%**

**Men**

**23.3%**

**MCCA**

# Income Sources

**Missoula Correctional Services PRC**

**MCCA relies on DOC Per Diem to pay expenses.**



**94%**

**Per Diem &  
daily rates**

**MCCA**





Daily Cost to house in Prison: Approximately \$115.35/day

Daily Cost to house in Pre-Release: \$54.43-\$86.33/day

Length of Stay must be taken into consideration – average length of stay in prison is far more than the average 6 month's length of stay in a prerelease center

# Cost Savings

**MCCA**

# Financial Impact FY 2022

## Pre-Release Centers

\$632,785  
Restitution  
paid

\$1,812,676  
Spending



Employers

Nearly **1,000**  
businesses



Earned Income

**\$14,664,330**



Income Taxes Paid

**\$3,874,502**

\$6,293,972  
Savings

\$258,478  
Family  
Support Paid

**MCC**

ASAM 3.5 Residential Treatment Program

Daily Montana Medicaid Rate: \$256.95

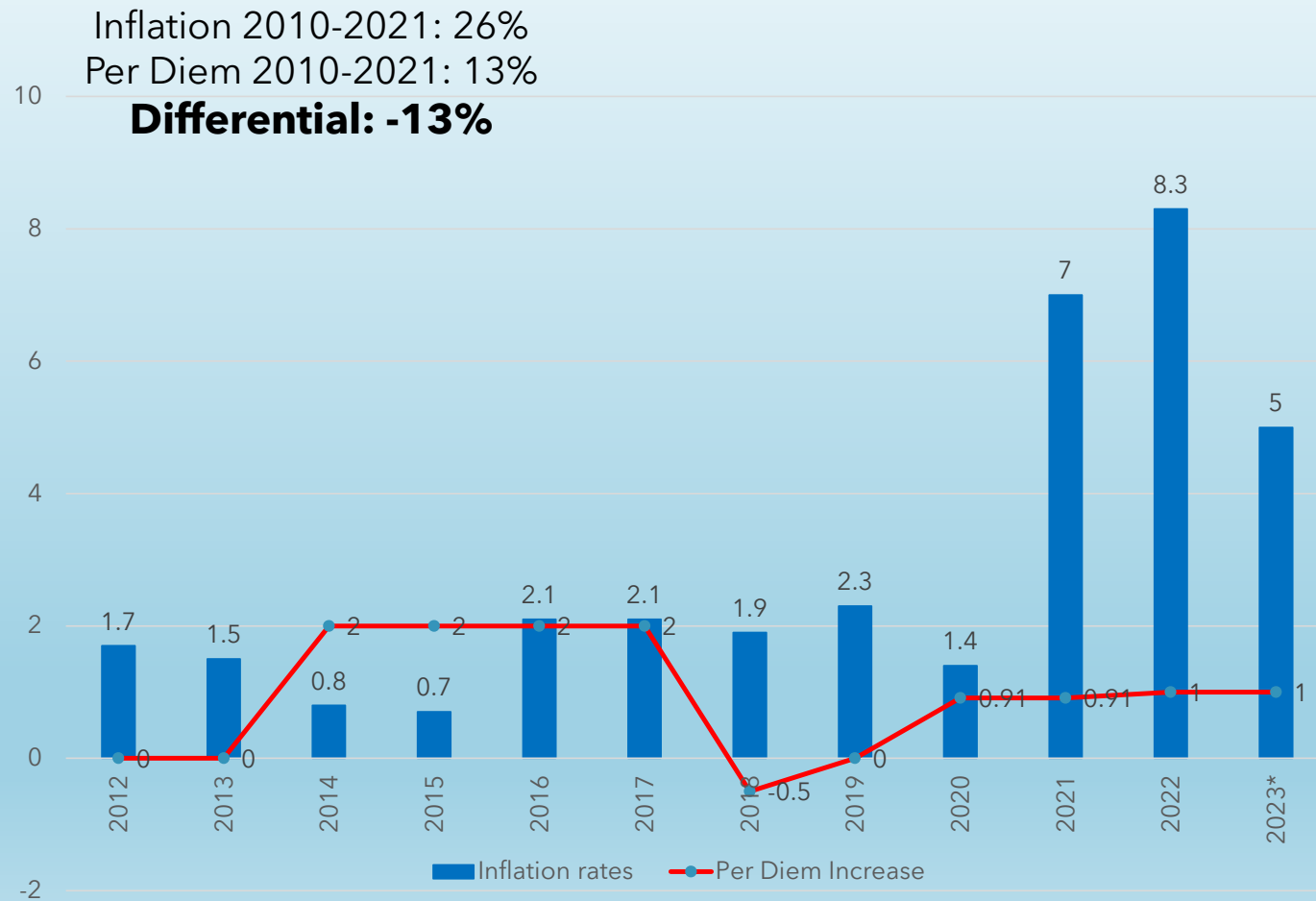
Daily Cost Range for  
MCCA Treatment Facilities: \$76.80-\$142.55

In-house dental and medical care are included  
in the per diem cost above.

**Community  
Corrections  
Treatment =  
\$\$\$ Savings**

**MCCA**

# Inflation Rates vs Per Diem Increases



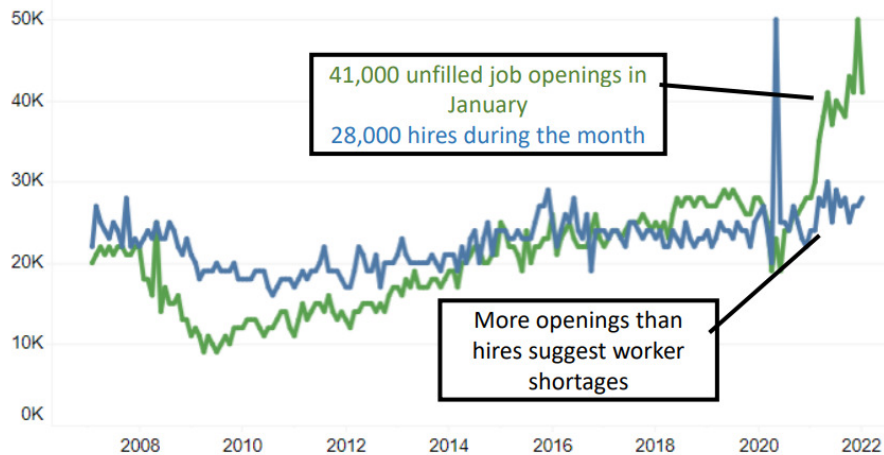
Labor Department's Bureau of Labor Statistics

**MCCA**

# Workforce Shortage in Montana

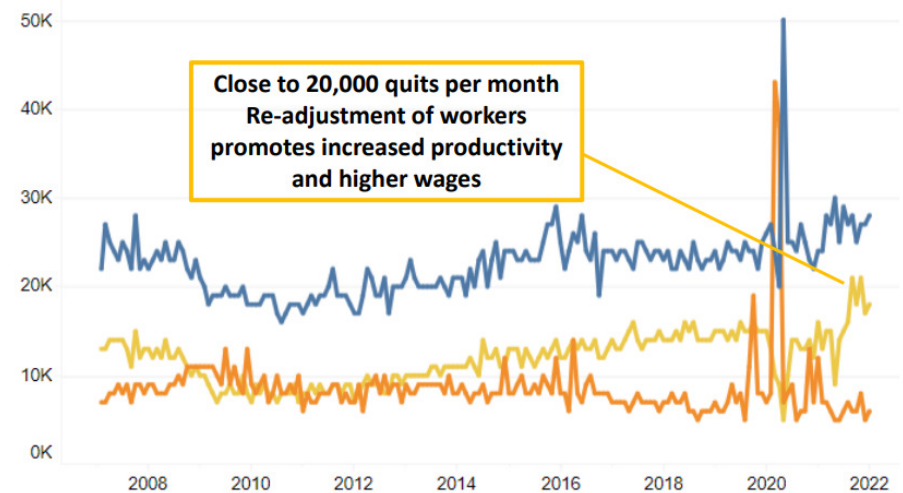
## Historically High Number of Job Openings

Job Openings and Hires



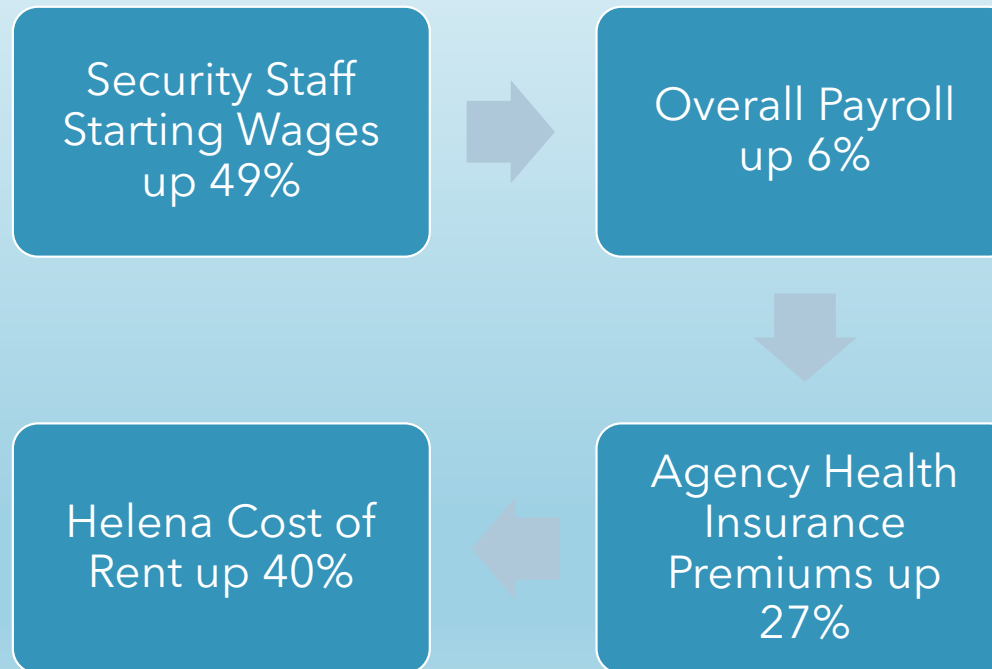
## Openings Partially Due to Worker Churn

Hires, Layoffs & Discharges, and Quits



# PERSONNEL COST INCREASES

Boyd Andrew Community Services (Helena) Changes 2019 to 2022





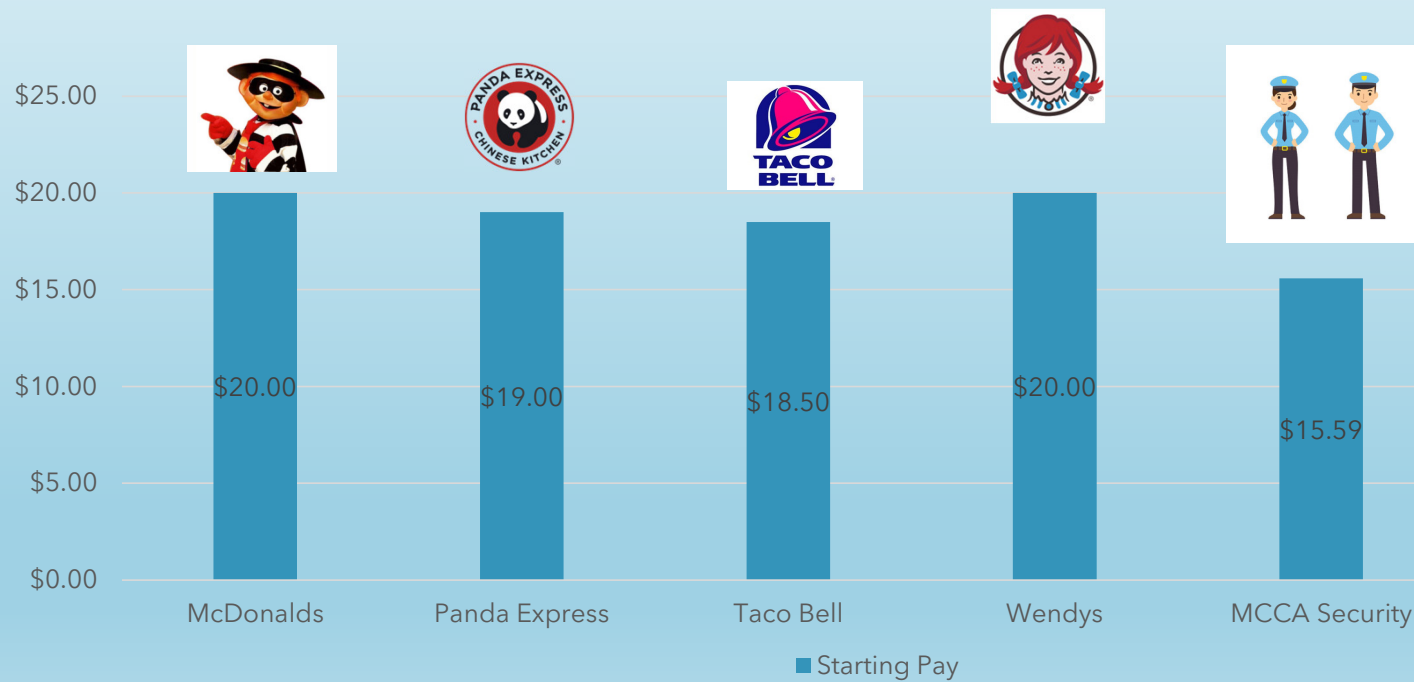
# Wage Growth

MCCA Employs more than 800 staff in administration, security, treatment, medical and case management services



**MCCA**

# Job Market Competition



**MCCA**

# What Makes Community Corrections Unique?

Why does this arrangement  
work so well?

## Employer Relationships

- Mutually beneficial
- Resident wages often higher than facility staff wages
- Short waiting period for jobs once released

## Lower Recidivism

- Benefit to the entire system
- Cost efficient
- Offender-specific programming

## Treatment Component

- Need for additional treatment in MT
- We can be part of the solution
- Includes criminogenic thinking

**MCCA**

# What Makes Community Corrections Unique?

Why does this  
arrangement work so  
well?

## Front lines

- Work from home not an option

## 24/7 Shift Coverage

- Security wages especially challenging
- Must be staffed around the clock

## Public Safety Prioritized

- Adequate staffing not optional

**MCCA**