

MONTANA UNIVERSITY SYSTEM

Board of Regents

Commissioner of Higher Education

Montana State University

Bozeman Northern Billings Great Falls

The University of Montana

Missoula MT Tech Western Helena

Community Colleges

Dawson Flathead Miles

Office of the Commissioner of Higher Education

Legal Affairs & Human Resources

System-wide Legal Services

Employment & Compensation

Labor Relations

Employee Benefits

Workers Compensation

Budget, Administration, & Planning

Accounting & Budget

Information Technology

Enterprise Risk/Audit

Student Assistance

Procurement

Academic, Research, & Student Affairs

College Access/K12 Partners

Am. Indian/Minority Success

Student Affairs/Success

Academic Initiatives

Workforce Development

Research & Innovation

Government Relations & Communications

Gov't Relations

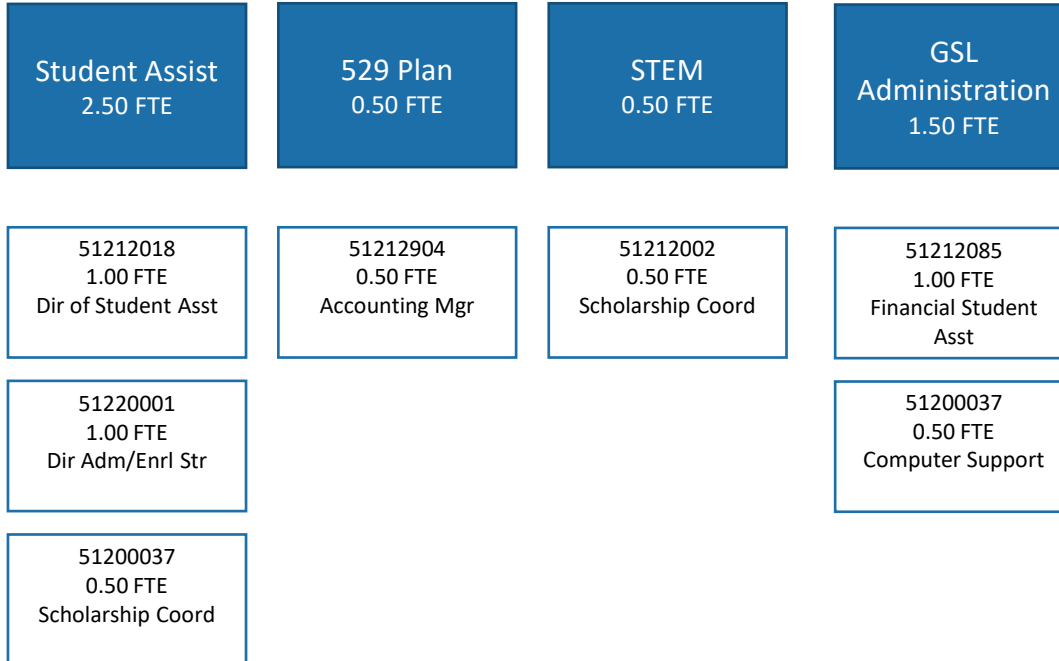
Communications

Public Affairs

Administration
23.28 FTE

Commissioner 3.00 FTE	Govt Affairs 2.50 FTE	Academic Affairs 3.00 FTE	Legal & Labor 4.00 FTE	Budget, Admin & Planning 10.75 FTE		
51200050 1.00 FTE Commissioner	51212062 1.00 FTE Exec Dir Govt Affairs	51200021 1.00 FTE DC Acad Affairs	51200004 1.00 FTE DC Chief Legal Coun			51200054 1.00 FTE DC BAP
51200008 1.00 FTE Executive Asst	51200080 0.50 FTE Exec Support Asst	51200016 1.00 FTE Dir of Transfer & Special Projects	51200014 1.00 FTE Assc Legal Counsel	51200018 1.00 FTE Dir Budget & Plan	51200070 1.00 FTE MUS IT Director	51200002 1.00 FTE Assurance/RM
51200017 1.00 FTE Admin Asst	51200011 1.00 FTE Communications Officer	51200010 1.00 FTE Dir Student Affairs	51200029 1.00 FTE Exec Dir Human Res	51212016 0.50 FTE Accounting Mgr	51270503 1.00 FTE Business Intel Manager	51200065 1.00 FTE SA Support Mgr
			51212149 1.00 FTE Dir HR & Labor Rel	51200056 1.00 FTE Accountant Lee	51200015 1.00 FTE OCHE IT Manager	
				51200012 1.00 FTE Accounting Spec.	51200055 0.50 FTE Computer Support Specialist	
				51200005 0.68 FTE Accounting Tech	51200081 Accounting 0.10 FTE	

Student Assistance & Guaranteed Student Loan
4.00 FTE HB2 – 1.00 FTE Statutory



MUS Group Insurance & MUS Workers' Compensation
11.00 FTE

500
Group Insurance
10.00 FTE

51266002
1.00 FTE
Benefits Specialist

51266006
1.00 FTE
Exec Director

51266004
1.00 FTE
Benefits Specialist

51266005
1.00 FTE
Benefits Specialist

51266007
1.00 FTE
Assc. Director

51266008
1.00 FTE
Communications

51266009
1.00 FTE
RN Case Manager

51266010
1.00 FTE
Wellness Pgm Mgr

51266012
1.00 FTE
Wellness Specialist

51266013
1.00 FTE
Wellness Specialist

5102WC
Group Insurance
1.00 FTE

51270001
1.00 FTE
Director
Tietz

College Access/K12 Partners & American Indian Minority Success
18.24 FTE – 3.33 Modified FTE

Gear Up
7.25 FTE

51216001 1.00 FTE Director	51212044 0.80 FTE Compliance Officer
----------------------------------	--

51216002 1.00 FTE Comm-Ops Mgr	51216004 1.00 FTE College Access Mgr
--------------------------------------	--

51216003 1.00 FTE CA Program Mgr	51216008 1.00 FTE Data Analysis Mgr
--	---

51216006 1.00 FTE Grant Manager

51216009 0.45 FTE Federal Accountant
--

AIMA
1.00 FTE

51270501 1.00 FTE Director

EOC
3.33 Modified FTE

51230015 0.33 FTE EOC – Proj Dir
--

51230016 1.00 FTE EOC – Prog Spec

51230017 1.00 FTE EOC – Outreach Adv
--

51230018 1.00 FTE EOC – Outreach Adv
--

ETS
9.99 FTE

51200040 1.00 FTE Director

51200045 1.00 FTE College Access Mgr
--

51200042 1.00 FTE Program Mgr/Int Dir

51200610 1.00 FTE PCA Flathead Area

51200043 1.00 FTE PCA Flathead Area

51200611 1.00 FTE PCA Blackfeet Area
--

51200044 0.99 FTE PCA Great Falls Area
--

51200612 1.00 FTE PCA Crow Area

51200052 1.00 FTE PCA Blackfeet Area
--

51200613 1.00 FTE PCA Great Falls Area
--

Workforce Development
4.20 FTE

Perkins
4.20 FTE

51280002 0.45 FTE Federal Accountant
--

51280005 0.50 FTE Compliance Mgr
--

51280003 0.25 FTE Program Asst

51280006 1.00 FTE CTE Data Spec

51280004 1.00 FTE Perkins Pgm Mgr

51280009 1.00 FTE Director
