

Friends of Historic Hotel Libby-NRHP 2012
Lincoln County, Libby, MT
Building began 1898-Completed 1910



HHL 1930 and our Restoration point



HHL currently



Chimney built 1909



West facing roof with large hole



A hole appeared in the West facing roof in the summer of 2020 and we were able to temporarily fix it with large crack sealing foam while not ideal it does keep the birds out.



North facing roof on West end of building

Friends of Historic Hotel Libby-NRHP 2012
Lincoln County, Libby, MT
Building began 1898-Completed 1910



South facing roof, inside courtyard, West end of building.



Various spots inside the roof.

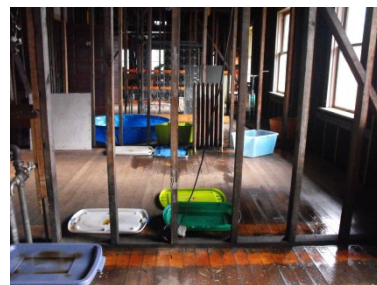
Friends of Historic Hotel Libby-NRHP 2012

Lincoln County, Libby, MT

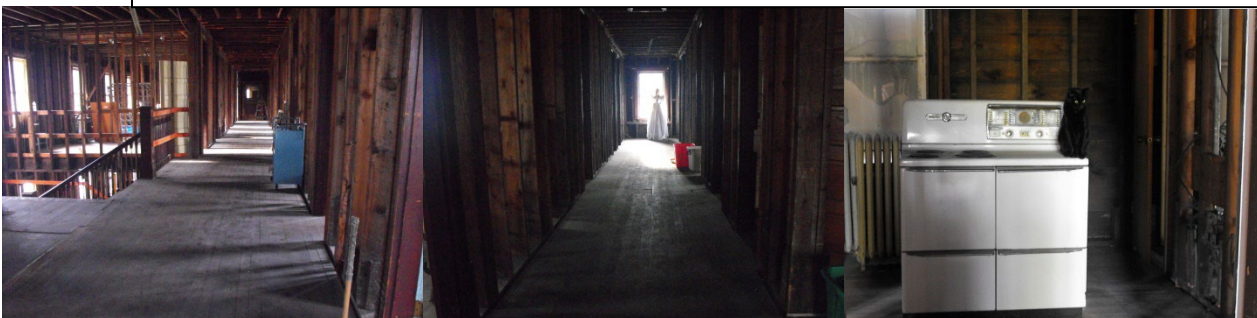
Building began 1898-Completed 1910



Current colorful water containment system. Spring and fall require almost daily emptying. While this system is not perfect it does keep (most) of the water from ruining the original hardwood floors that are awaiting rehabilitation. All the pictures are different areas all on the third floor.



With all that being said, HHL is truly a beautiful building full of history. We host many events in our lobby, have had a movie filmed here, weddings and fundraisers. We live at the hotel with our cat Ed.



Friends of Historic Hotel Libby-NRHP 2012

Lincoln County, Libby, MT

Building began 1898-Completed 1910



Annual Fundraising Tea Party. Always a sold out affair. This theme was Alice in Wonderland and raised \$4250.52 for Restoration.

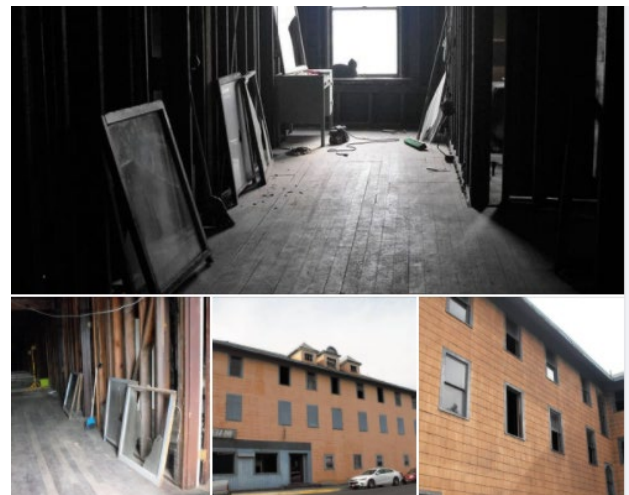
Restored Grand Staircase



HHL continues to partner with LVFD for Department Training every year. 1911 and 2019



Beautiful wood work throughout the hotel.



There are many more completed projects and projects being worked on, this is just a glimpse. Thank you for your time.

We replaced 52 windows that had been broken and boarded over for 30 years. We have completed many rehabilitation projects, including and original bathroom on the main floor.