

Montana Community Corrections Association (MCCA)

Select Committee on Corrections
Facility Capacity and System
Development (HB5)

3/12/24

Montana Community Corrections Association

Erin McGowan – Executive Director

erin@smithandmcgowan.com

Amy Tenney

Boyd Andrew

CEO

atenney@boydandrew.com

Mike Thatcher

CCCS

CEO

mthatcher@cccscorp.com

David Armstrong

Alternatives

CEO

darmstrong@altinc.net

Alan Scanlon

Great Falls Transition Center

Executive Director

alan@gfprc.org

Sue Wilkins

Missoula Correctional Services

Executive Director

swilkins@m-c-s-inc.org

MCCA

+ Employs more than 800 staff in administration, security, treatment, medical and case management services

Almost 2,000 individuals served each day

- + Eight Pre-Release Centers
- + Seven Inpatient Treatment Programs
- + Two Assessment and Sanction Centers

Focus is re-entry, treatment, and jail diversion.

Public Safety is priority.

Substance Use, Mental Health, and Criminogenic Based treatment is provided.

Success rates are higher than traditional incarceration.

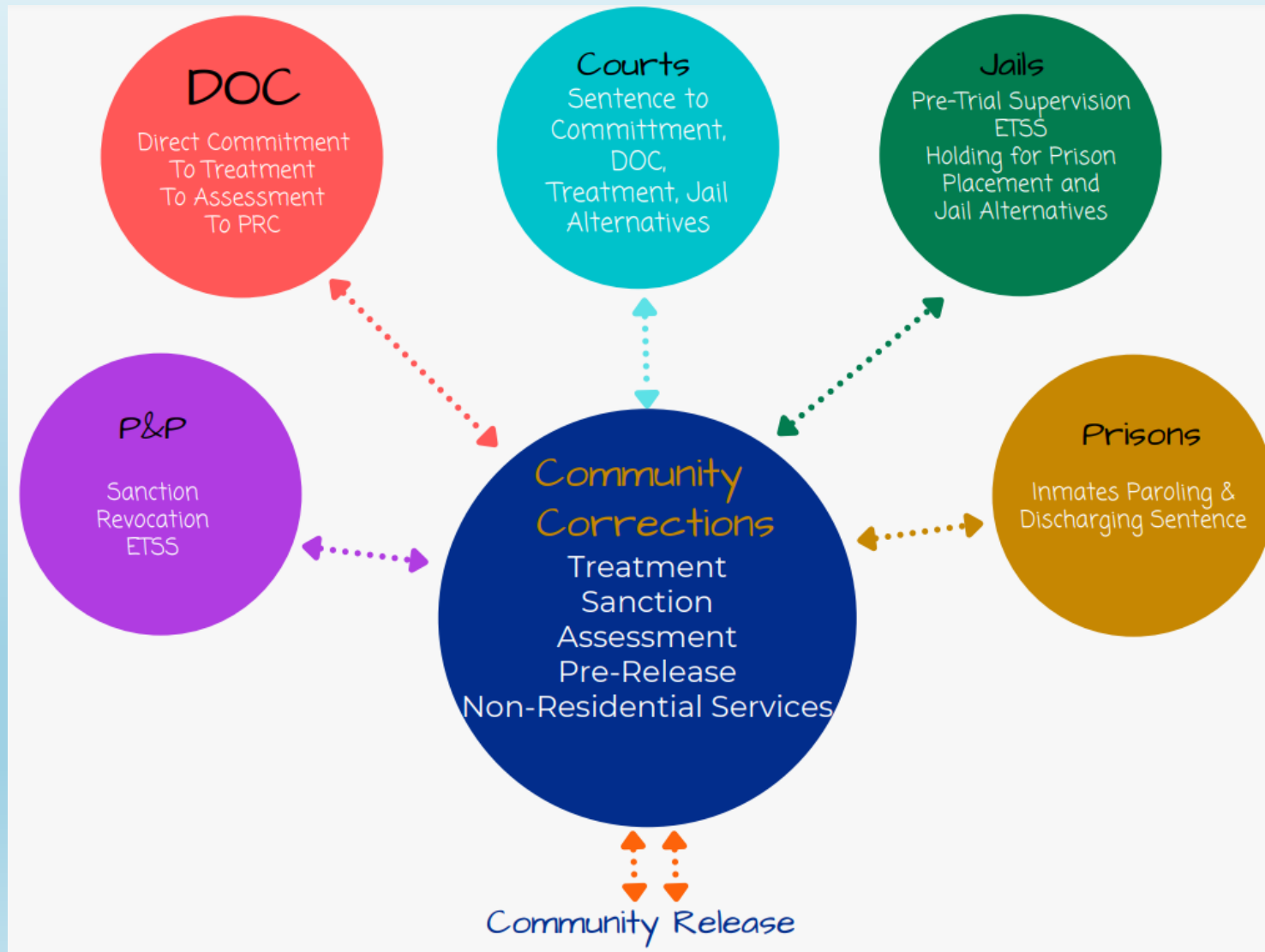


MCCA

A group of 5 NON-PROFIT organizations that operates 17 treatment, assessment, sanction, and pre-release centers founded in 2015

MCCA

Referral Sources for Community Corrections in Montana



Pre-Release Facilities



Helena Pre-Release Center

Original Capacity: 40
(1999)

Current Capacity: 108



Alpha House Pre-Release Center

Original Capacity: 20
(1980)

Current Capacity: 175



Passages Pre-Release Center

Original Capacity: 70
(2007)

Current Capacity: 80



Butte Pre-Release Center

Original Capacity: 30
(1983)

Current Capacity: 150



Women's Transition Pre-Release Center

Original Capacity: 24
(1992)

Current Capacity: 60

Pre-Release Facilities/Assessment & Sanction Centers



Missoula Pre-Release Center

Original Capacity: 30
(1994)

Current Capacity: 117



Great Falls Transition Pre-Release Center

Original Capacity: 40
(1984)

Current Capacity: 212



Gallatin County Re-entry Pre-Release Center

Original Capacity: 48
(205)

Current Capacity: 48



START Assessment and Sanction Center- Male

Original Capacity:
(2005)

Current Capacity: 152



ASRC Assessment and Sanction Center- Female

Original Capacity:50
(2007)

Current Capacity: 60

Treatment Facilities



Elkhorn- Women's
Methamphetamine and
Dual Diagnosis
Treatment Center

Original Capacity: 40
(2007)

Current Capacity: 53



Passages Alcohol
and Drug Treatment
Women

Original Capacity: 50
(2007)

Current Capacity: 55



PARC- Female DUI
Program

Original Capacity: 15
(2023)

Current Capacity: 20



Connections Corrections
Program-West Alcohol and
Drug Treatment Center-
Men

Original Capacity: 40
(2005)

Current Capacity: 52



Watch- West Men's
DUI Program

Original Capacity:
(1999)

Current Capacity: 140



Nexus -Men's
Methamphetamine and
Dual Diagnosis
Treatment Center

Original Capacity: 80
(2007)

Current Capacity: 80

Prerelease Center staff assist residents with the following areas to prepare them to re-enter the community:

- + Secure suitable, stable housing
- + Secure and maintain gainful employment
- + Appropriate referrals to community-based programs for Substance Use Disorder and/or Mental Health Treatment and Aftercare
- + Enroll in Medicaid if appropriate
- + Enroll in SSI/SSDI if appropriate
- + Tax Assistance
- + Secure Proper Identification - Driver's License, State ID, Birth Certificate, Social Security Card

Prerelease Centers ARE Re-Entry



History of Community Corrections in Montana

Part of the Community

- Understands community needs—listens and responds
- Not viewed as part of the bureaucracy
- Public safety is prioritized

Flexibility & Adaptability

- Less red tape
- Can more easily respond to changing needs
- Innovative and Efficient

Proven Stability

- 40+ years of effective services
- Expansion capability
- Less expensive to taxpayer

A Formula That Works!

What Makes Community Corrections Unique?

Employer Relationships

- Mutually beneficial
- Resident wages often higher than facility staff wages
- Short waiting period for jobs once released

Lower Recidivism

- Benefit to the entire system
- Cost efficient
- Offender-specific programming

Treatment Component

- Need for additional treatment in MT
- We can be part of the solution
- Includes criminogenic thinking

Why does this arrangement work so well?

Evidence-
Based

24/7 Shift
Coverage

Public Safety
Prioritized

What Makes Community Corrections Unique?

Financial Impact

Pre-Release Centers 2021

\$336,816
Restitution
paid

\$3,778,380
Spending



Employers

~1,000
businesses



Earned Income

\$11,464,255



Income Taxes Paid

\$2,092,027

\$5,064,438
Savings

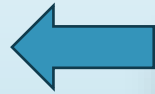
\$552,985
Family
Support Paid

GFPRC Outcome Measures

October 1 - December 31, 2023

January 1 - September 31, 2023

45



Total Releases



107

188



AVG LOS



197

\$14.36



AVG Hourly Wage



\$13.64

\$13,473.76



Total Restitution Paid



\$64,688.97

\$3,502.10



AVG Act. Balance



\$3,876.09

\$25.00

Highest
Hourly Wage

\$16.40

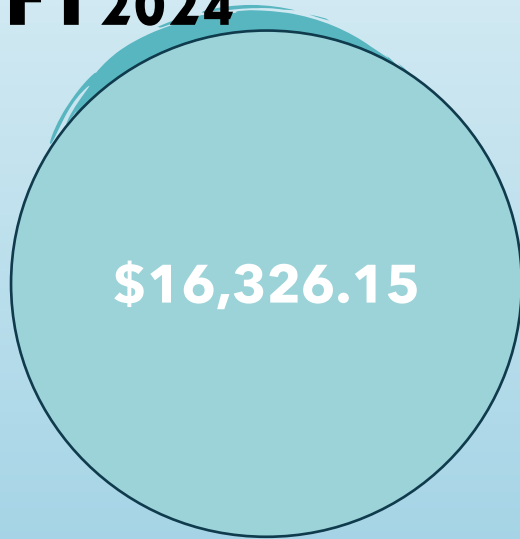
Average
Hourly Wage

\$ 3,782.59

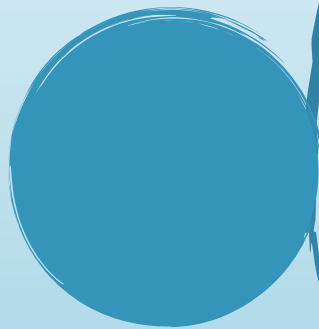
Average
Savings

Helena Men's PRC Resident Wage Rate

Alpha House Men's PRC Resident Savings Upon Departure Q2 FY2024



**Highest
Account
Balance**



**Average
Account
Balance**

Missoula Correctional Services

Restitution Paid Q2 FY2024

Residents Released Who Owed
Restitution at the time of Intake

25

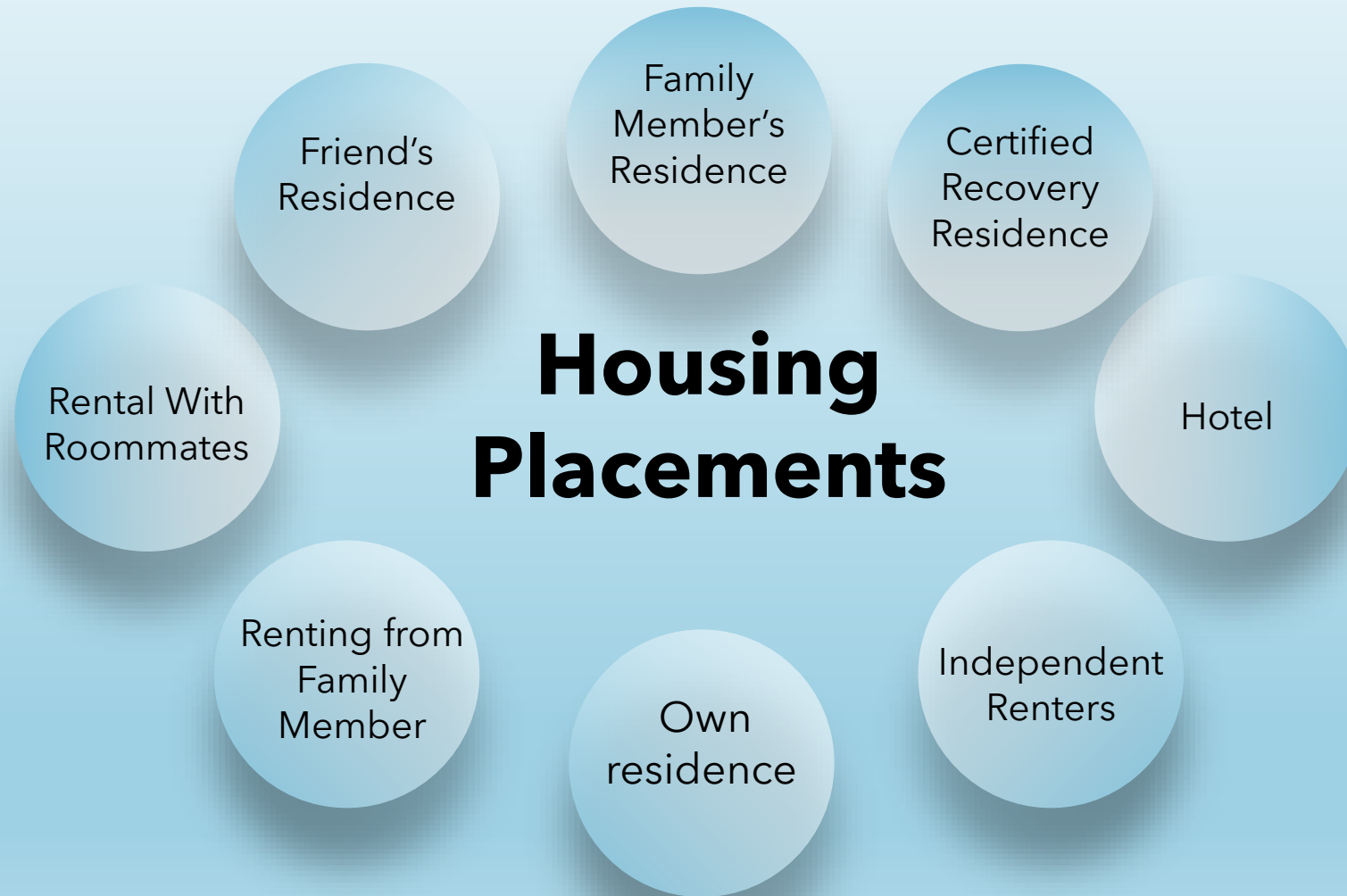
Average Wage

\$15.09

Total Restitution Paid

\$10,613.18

PRC Housing Placements Post Release





195 Days

Average
Length of Stay

Stays in excess of 200 days require the DOC's written
authorization

Program Length of Stay

Great Falls Transitional Center 2023

MCCA

Types of Employment

Assistant Manager	Cashier	Customer Service	Hotel	Supervisor	Sales
Attendant	Clerical	Night Auditor	Housekeeping	Maintenance	Laborer
Automotive	CNA	Assistant Manager	Clerk	Mechanic's Assistant	Tire Mechanic
Disaster Restoration	Construction	Fence Laborer	Installation	Night Auditor	Tire Tech
Mechanic	Cook	Food Services	Janitorial	Painter	Wait Staff
Caretaker	Crew Leader	General Laborer	Landscape/Lawncare	Roofer	Welder

Filled Capacity of Treatment Centers

Snapshot as of 3/3/2024

Facility Type	Sex	Facility Name	Inmate Workers	Residents	Total Population	Operational Capacity
Treatment Center	Male	Connections Corrections Program (Butte)	0	61	61	62
		Connections Corrections Program (Warm Springs)	0	87	87	86
		Nexus	1	81	82	82
		Watch - West	1	86	87	81
		Total	2	315	317	311
	Female	Elkhorn Treatment Center	0	52	52	51
		Passages Alcohol And Drug Treatment	0	68	68	55
		Total	0	120	120	106
	Total		2	435	437	417

Female: 113%
Male: 102%

https://dataportal.mt.gov/t/COR/views/POPReportPublic_15931787918580/SecurePopulation?%3Aiid=2&%3AisGuestRedirectFromVizportal=y&%3Aembed=y

Filled Capacity Pre-release

Snapshot as of 3/3/2024

Facility Type	Sex	Facility Name	Inmate Workers	Residents	Total Population	Operational Capacity
Prerelease Center	Male	Billings Pre Release Center	16	165	181	173
		Butte Prerelease Center - Male	14	114	128	120
		Gallatin County Re-Entry Program	2	43	45	34
		Great Falls Transition Center	8	154	162	171
		Helena Prerelease Center	6	91	97	109
		Missoula Correctional Services (Prerelease)	4	54	58	94
		Total	50	621	671	701
	Female	Butte Prerelease Center - Female	0	59	59	60
		Great Falls Transition Center	2	36	38	34
		Missoula Correctional Services (Prerelease)	0	22	22	23
		Passages Prerelease Center	13	74	87	76
		Total	15	191	206	193
	Total		65	812	877	894

Female: 107%

Male: 98%

https://dataportal.mt.gov/t/COR/views/POPReportPublic_15931787918580/SecurePopulation?%3Aiid=2&%3AisGuestRedirectFromVizportal=y&%3Aembed=y

Contracted vs Capacity Assessment/Sanction

Snapshot as of 3/3/2024

Facility Type	Sex	Facility Name	Inmate Workers	Residents	Total Population	Operational Capacity
Assessment and Sanction Center	Male	Missoula Assessment And Sanction Center	0	136	136	144
		Pine Hills Correctional Facility	0	81	81	88
		Start	2	151	153	152
		Total	2	368	370	384
	Female	Passages Assessment and Sanction Center	0	65	65	72
		Total	0	65	65	72
Total			2	433	435	456

Female: 90%
Male: 96%

https://dataportal.mt.gov/t/COR/views/POPReportPublic_15931787918580/SecurePopulation?%3Aiid=2&%3AisGuestRedirectFromVizportal=y&%3Aembed=y

Transitional Living (TL)

At full capacity, the TL program will increase PRC bedspace by 70 beds.



RESUMED FEBRUARY
2023



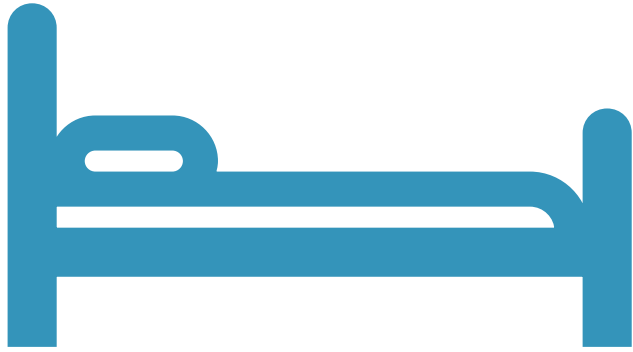
CAPACITY STATEWIDE:
70

TL was funded by the last legislature and placements were authorized by the DOC in Feb 2024.

TL creates additional bed space in PRCs by allowing select offenders to complete the last two months of placement while living in the community.

HB 426

- Authorizes transfer of inmates from secure facilities to pre-release centers up to 14 months prior to their parole board appearances.
- When Administrative Rules are finalized and placements authorized by the DOC, PRCs will increase the number of institutional transfers accepted, creating bed space in prisons.
- Currently institutional transfers comprise only 23% of PRC placements where once this averaged closer to 50%



Immediate Expansion Opportunities

Great Falls 20 PRC Bedspaces



Expansion Opportunity

Billings, Bozeman, Butte, Great Falls, Helena,
Missoula:

Purchase Community Housing for probationers and
parolees



Expansion Opportunity

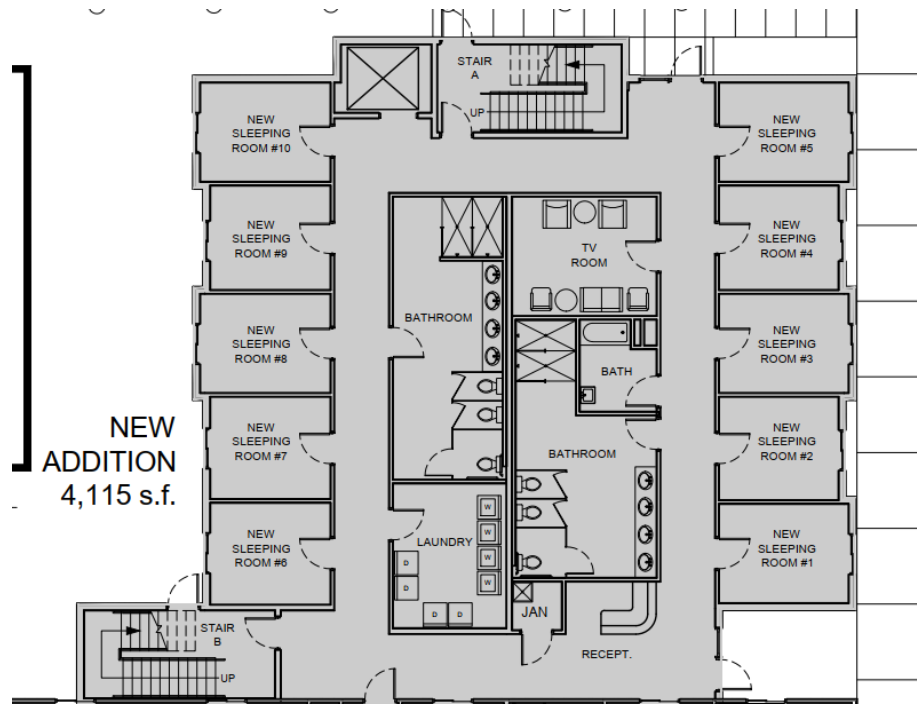
CCCS Secure Sex Offender Program: 68

Passages Women's PRC: build to suit (land owned)

Great Falls PRC: build to suit (land owned)

CCCS: build to suit (land owned)

Elkhorn Treatment Center: 20 Female Beds (with construction)



Expansion Opportunity

Alternatives, Inc.

Alpha House: 60 Bed Addition



Expansion Opportunity

Men's Culinary Arts Program (CAP)
Expand Women's CAP

QUESTIONS

???